

## Excellent Integrated System Limited

Stocking Distributor

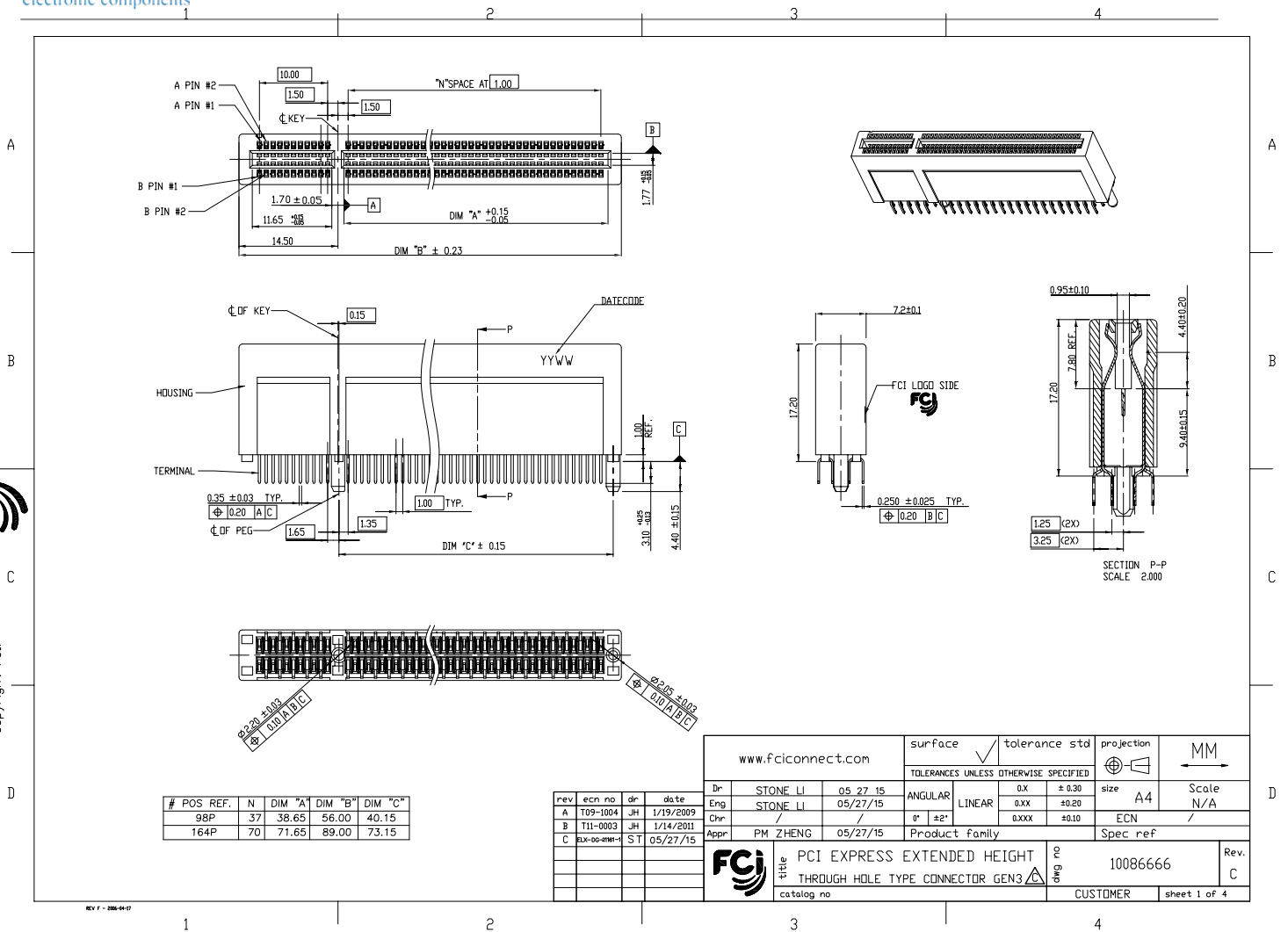
Click to view price, real time Inventory, Delivery & Lifecycle Information:

[FCI](#)

[10086666-10012TLF](#)

For any questions, you can email us directly:

[sales@integrated-circuit.com](mailto:sales@integrated-circuit.com)



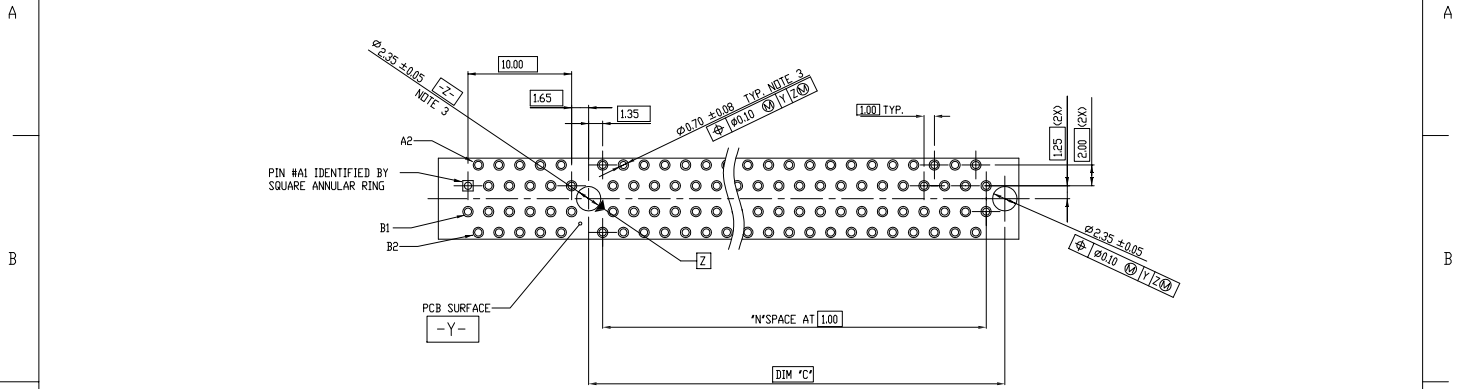
Copyright FCI.

#	POS REF.	N	DIM "A"	DIM "B"	DIM "C"
98P	37	38.65	56.00	40.15	
164P	70	71.65	89.00	73.15	

rev	ecn no	dr	date
A	T09-1004	JH	1/19/2009
B	T11-0003	JH	1/14/2011
C	EX-06-2111	ST	05/27/15

www.fciconnect.com		surface	tolerance std	projection	MM
Dr	STONE LI	05/27/15	ANGULAR	0.X	± 0.30
Eng	STONE LI	05/27/15	LINEAR	0.XX	± 0.20
Chr	/	/	0" ± 2"	0.XXX	± 0.10
Appr	PM ZHENG	05/27/15	Product family	ECN /	
				Spec ref	
FCI title			PCI EXPRESS EXTENDED HEIGHT THROUGH HOLE TYPE CONNECTOR GEN3		Rev. C
catalog no			1008666		CUSTOMER
					sheet 1 of 4

REV F - 2004-04-07



← 98P I/O PANEL DIRECTION  
 RECOMMENDED FOOTPRINT(NOTE 6)

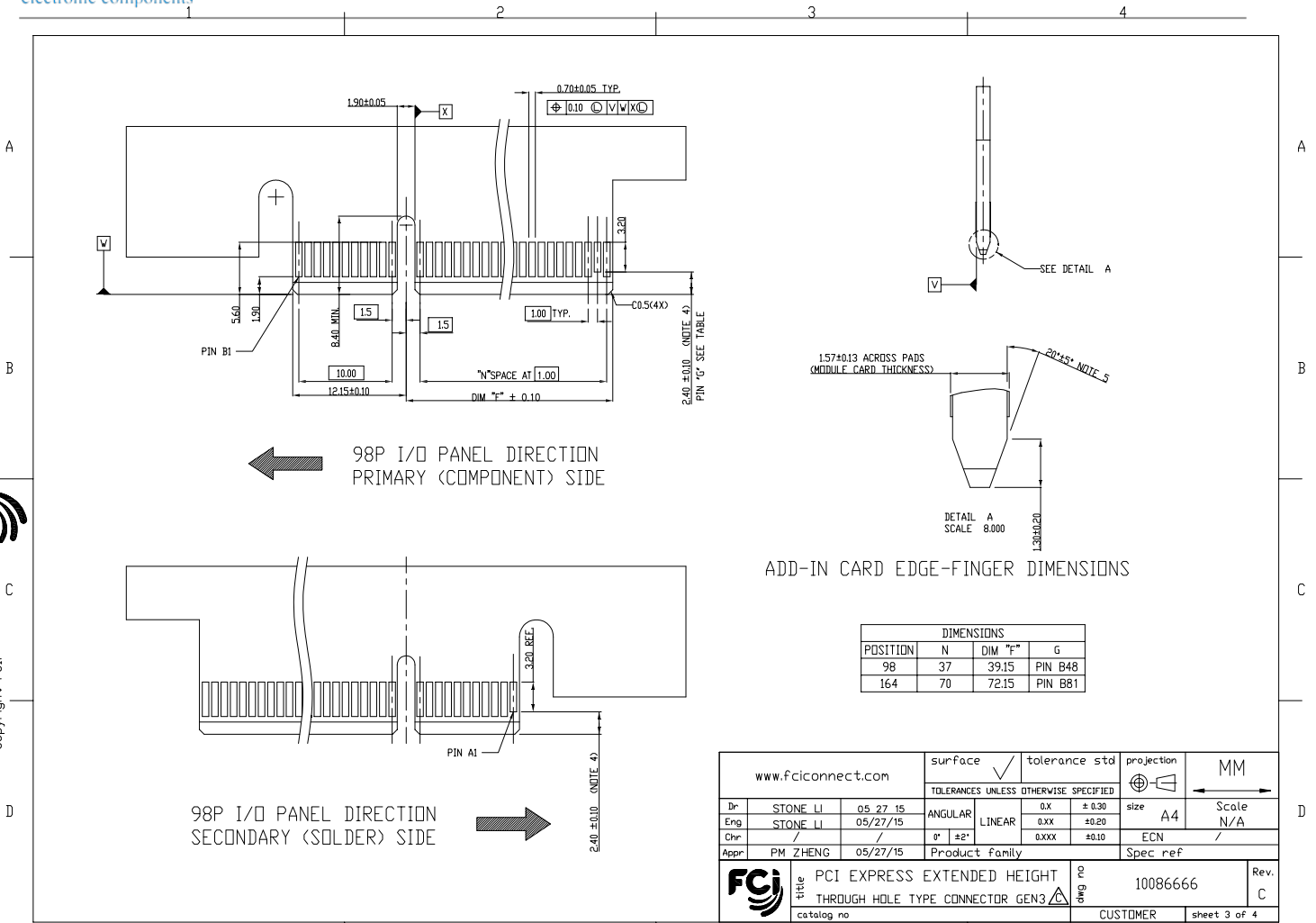
#	POS REF.	N	DIM "C"
	98P	37	40.15
	164P	70	73.15

www.fciconnect.com				surface <input checked="" type="checkbox"/>	tolerance std	projection	MM
				TOLERANCES UNLESS OTHERWISE SPECIFIED			
Dr	STONE LI	05/27/15	ANGULAR	0.X	± 0.30	size	A4
Eng	STONE LI	05/27/15	LINEAR	0.XX	± 0.20	ECN	N/A
Chr	/	/	0"	± 2"	± 0.10	Spec ref	/
Appr	PM ZHENG	05/27/15	Product family				
				title PCI EXPRESS EXTENDED HEIGHT THROUGH HOLE TYPE CONNECTOR GEN3		drawing 1008666	
catalog no				CUSTOMER		sheet 2 of 4	

REV F - 2014-04-07



Copyright FCI.



Copyright FCI.

www.fciconnect.com			surface <input checked="" type="checkbox"/>	tolerance std	projection	MM
			TOLERANCES UNLESS OTHERWISE SPECIFIED			
Dr	STONE LI	05/27/15	ANGULAR	0.X	± 0.30	size A4
Eng	STONE LI	05/27/15	LINEAR	0.XX	± 0.20	Scale N/A
Chr	/	/	0"	± 2"	0.XXX	± 0.10
Appr	PM ZHENG	05/27/15	Product family		ECN /	
					Spec ref	
			title PCI EXPRESS EXTENDED HEIGHT THROUGH HOLE TYPE CONNECTOR GEN3		drawing 1008666	Rev. C
catalog no			CUSTOMER		sheet 3 of 4	

REV F - 2004-09-07

**NOTES:**

1. MATERIAL:
  - HOUSING: HIGH PERFORMANCE RESIN, GLASS FILLED UL94V-0 RATED.
  - TERMINAL: COPPER ALLOY
  - PLATING: 100u" MIN. TIN, ALL OVER 80u" NICKEL UNDERPLATE
  - CONTACT AREA PLATING - SEE PRODUCT NUMBER CODE
  - SOLDER TAIL: TIN, SEE PRODUCT NUMBER CODE
2. PRODUCT SPECIFICATION: GS-12-233
- ③ THE HORIZONTAL AXIS FOR THE HOLE PATTERN IS ESTABLISHED BY A LINE THROUGH THE CENTER OF THE TWO Ø2.35 HOLES. THE VERTICAL AXIS IS 90° TO THE HORIZONTAL AXIS, THROUGH THE CENTER OF DATUM Z.
- ④ NO TIE BAR PERMITTED FROM CARD EDGE TO LEADING EDGE OF PAD FOR PINS A1 AND PIN NUMBERS "F".
- ⑤ CHAMFER EDGES MUST BE FREE OF CUTTING BURRS.
- ⑥ PLEASE REFER TO PCI EXPRESS ASSOCIATION SPECIFICATION FOR MODULE CARD AND PCB LAYOUT TOLERANCE INFORMATION
7. RoHS COMPATIBLE PRODUCT SPECIFICATIONS
  - a-PLATING:
    - "LF" MEANS THE PRODUCT IS LEAD-FREE, 2um MINIMUM MATTE TIN OVER 1.27um MINIMUM NICKEL UNDERPLATE.
  - b-MANUFACTURING PROCESS COMPATIBILITY
    - THE HOUSING WILL WITHSTAND EXPOSURE TO 260°C±5°C SOLDER BATH TEMPERATURE FOR 5 SECONDS IN A REFLOW SOLDER APPLICATION WITH A 1.6mm MIN THICK CIRCUIT BOARD.

1008666 - X X X X X L F

HOUSING COLOR OPTIONS  
1-BLACK

RESERVED  
0

**TERMINAL PLATING OPTIONS**

0-80u" Ni UNDERPLATE  
30u" Au CONTACT AREA W/O LUBRICANT  
100u" TIN TAIL AREA -----COMPATIBLE RoHS

1-80u" Ni UNDERPLATE  
30u" Au CONTACT AREA WITH FOMBLIN 5% LUBRICANT  
100u" TIN TAIL AREA -----COMPATIBLE RoHS

LEAD FREE OPTION

PACKAGING OPTIONS  
T-TRAY PACKAGING

PDS. OPTIONS  
2-98  
3-164

**TAIL LENGTH OPTIONS**

	DIM "D"	PCB THICKNESS
1	3.10 +0.25 -0.13	2.36 ± 0.10

www.fciconnect.com			surface <input checked="" type="checkbox"/>	tolerance std	projection	MM
			TOLERANCES UNLESS OTHERWISE SPECIFIED			Scale
Dr	STONE LI	05/27/15	ANGULAR	0.X ± 0.30	size A4	N/A
Eng	STONE LI	05/27/15	LINEAR	0.XX ± 0.20	ECN	/
Chr	/	/	0" ± 2"	0.XXX ± 0.10	3GID	Spec ref
Appr	PM ZHENG	05/27/15	Product family			
	PCI EXPRESS EXTENDED HEIGHT THROUGH HOLE TYPE CONNECTOR GEN3		Part no	1008666		Rev. C
catalog no	CUSTOMER		sheet 4 of 4			

REV F - 2004-09-07



Copyright FCI.