

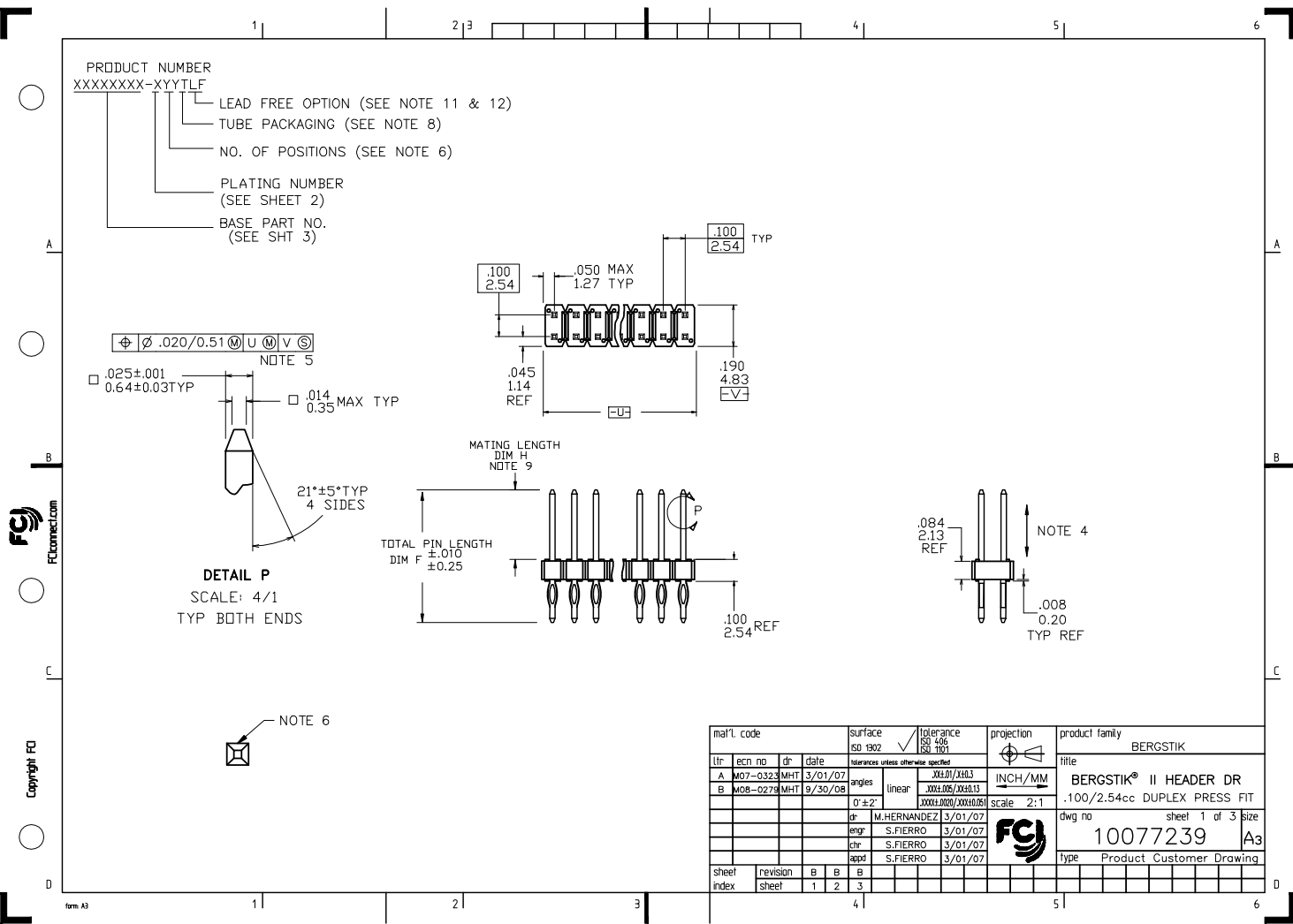
Excellent Integrated System Limited

Stocking Distributor

Click to view price, real time Inventory, Delivery & Lifecycle Information:

[FCI](#)
[10077239-112LF](#)

For any questions, you can email us directly:
sales@integrated-circuit.com

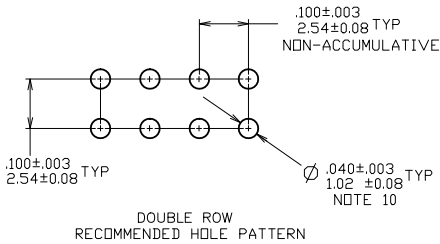
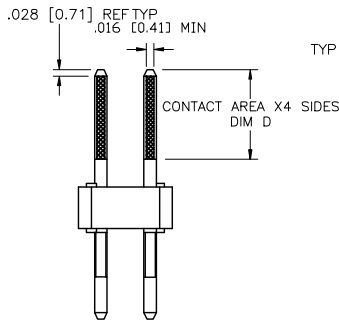


PLATING NUMBER	CONTACT AREA "DIM D" PLATING	PRESS FIT TAIL PLATING
XXXXXXXX-1YYLF	30u"/0.76u Au OVER 50u"/1.27u Ni	40u"/1.02u TIN OVER 50u"/1.27u Ni
XXXXXXXX-2YYLF	15u"/0.38u Au OVER 50u"/1.27u Ni	40u"/1.02u TIN OVER 50u"/1.27u Ni
XXXXXXXX-4YYLF	120u"/3.05u TIN OVER 50u"/1.27u Ni	120u"/3.05u TIN OVER 50u"/1.27u Ni
XXXXXXXX-5YYLF	30u"/0.76u GXT OVER 50u"/1.27u Ni	40u"/1.02u TIN OVER 50u"/1.27u Ni

NOTE 13

NOTES

- ① BODY MATERIAL: GLASS FIBER REINFORCED PCT FLAME RETARDENT PER UL-94V-0. COLOR: BLACK.
OR
MINERAL FILLED LCP FLAME RETARDENT PER UL-94V-0. COLOR: BLACK.
- ② PIN MATERIAL: PHOS-BRONZE.
3. FINISH: SEE TABLE
- ④ 2 Lbs / 0.9 Kg MIN RETENTION IN EITHER DIRECTION.
- ⑤ MEASURED WITH PART IN RESTRAINED CONDITION.
- ⑥ ANY NUMBER OF POSITIONS FROM 2 (2X1) THROUGH 72 (2X36).
7. PACKAGED IN POLY BAGS.
- ⑧ EIGHT DIGIT PART NUMBERS FOLLOWED BY A "T" ARE PACKAGED IN TUBES. SEE SPECIFIC PART NUMBERS FOR AVAILABILITY.
- ⑨ TO ASSURE PROPER INSTALLATION: BERG TOOLING, AS SPECIFIED IN INSTRUCTION MANUAL 166577 MUST BE USED. PIN MATING LENGTH WILL BE ±.005/0.13 AFTER INSTALLATION.
- ⑩ $\phi .0453/1.151$ DRILLED HOLE PLATED WITH $.0003/.007$ MIN. Sn OVER $.001/.03$ TO $.003/.08$ Cu. PLATING TO ACHIEVE A $\phi .040 \pm .003/1.02 \pm .08$ HOLE.
- ⑪ PART NUMBERS WITH "LF" SUFFIX ARE LEAD FREE.
- ⑫ THIS PRODUCT MEETS EUROPEAN UNION DIRECTIVES AND OTHER COUNTRY REGULATION AS DESCRIBED IN GS-22-008.
- ⑬ "THIS PRODUCT HAS 100% PURE TIN PLATING IN THE INTERFACE AND HAS NOT BEEN TESTED FOR WHISKER GROWTH IN ALL INTERCONNECT ENVIRONMENTS."



mat'l. code		surface	tolerance	projection	product family
ISO 1902		ISO 1902	ISO 1902	ISO 1902	BERGSTIK
tr	ecm no	dr	date	tolerances unless otherwise specified	title
B				linear	BERGSTIK® II HEADER DR
				angles	.100/2.54cc DUPLEX PRESS FIT
				0°±2'	dwg no
				dr	sheet 2 of 3 size
				engr	10077239
				chr	A3
				appd	Type Product Customer Drawing
sheet	revision				
index	sheet				

PRODUCT NO.	TOTAL PIN LGTH		MATING LENGTH		CONTACT AREA		PACKAGING
	DIM F	DIM F	DIM H	DIM H	DIM D	DIM D	
	ENGLISH	METRIC	ENGLISH	METRIC	ENGLISH	METRIC	
10077239-XY	0.608	15.44	0.318	8.08	0.200	5.08	POLY BAGS/TUBE

mat'l. code		surface	tolerance	projection	product family
		ISO 1902	ISO 406 ISO 1101		BERGSTIK
ltr	ecm no	dr	date	title	
B				BERGSTIK® II HEADER DR	
tolerances unless otherwise specified				INCH/MM	.100/2.54cc DUPLEX PRESS FIT
angles				linear	scale 2:1
0 ± 2°				XXX.XXX/XXX.XXX	dwg no 10077239
dr M.HERNANDEZ				3/01/07	sheet 3 of 3 size A3
enrg S.FIERRO				3/01/07	Type Product Customer Drawing
chr S.FIERRO				3/01/07	
appd S.FIERRO				3/01/07	
sheet index	revision sheet				