

## Excellent Integrated System Limited

Stocking Distributor

Click to view price, real time Inventory, Delivery & Lifecycle Information:

[FCI](#)  
[10088322-101LF](#)

For any questions, you can email us directly:  
[sales@integrated-circuit.com](mailto:sales@integrated-circuit.com)

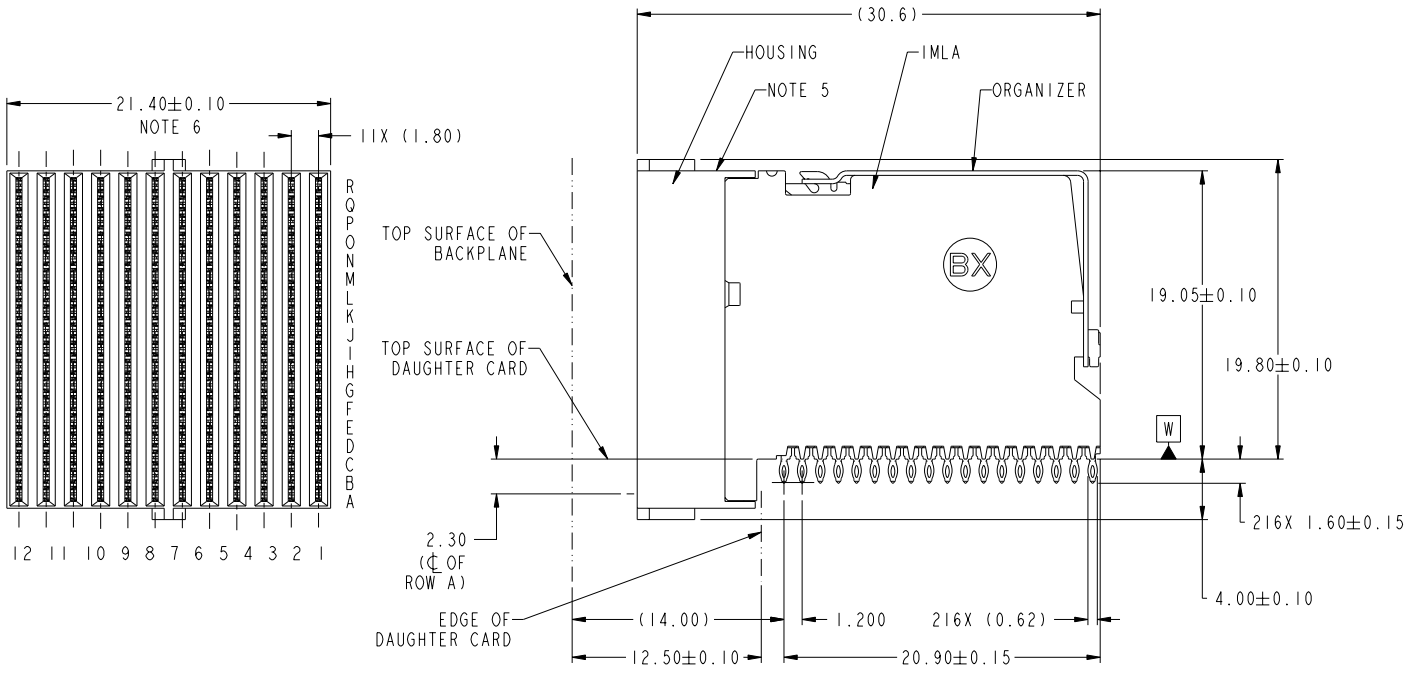
PRODUCT NUMBER  
SEE SHEET 3

A

B

C

D



rev	ecn no	dr	date
A	V08-0449	MRG	2008-10-15
-	-	-	-
-	-	-	-
-	-	-	-
-	-	-	-
-	-	-	-
-	-	-	-
-	-	-	-

www.fciconnect.com		surface - ✓	tolerance std	projection	MM
Dr M. GRAY 2008-10-15		TOLERANCES UNLESS OTHERWISE SPECIFIED		size A3	Scale 4:1
Eng M. GRAY 2008-10-15		ANGULAR	0.xx ±		
Chr R. JOHNSON 2008-10-15		LINEAR	0.xx ±	ECN	---
Appr M. GRAY 2008-10-15		Product family ZipLine		Spec ref	---
FCI		Title ZipLine R/A REC ASSY		dwg no 10088322	Rev. A
6 PR, 12 IMLA, 1.8MM PITCH, 21.6MM, HP SPECIAL		catalog no		CUSTOMER	sheet 1 of 3

REV. F - 2008-10-15

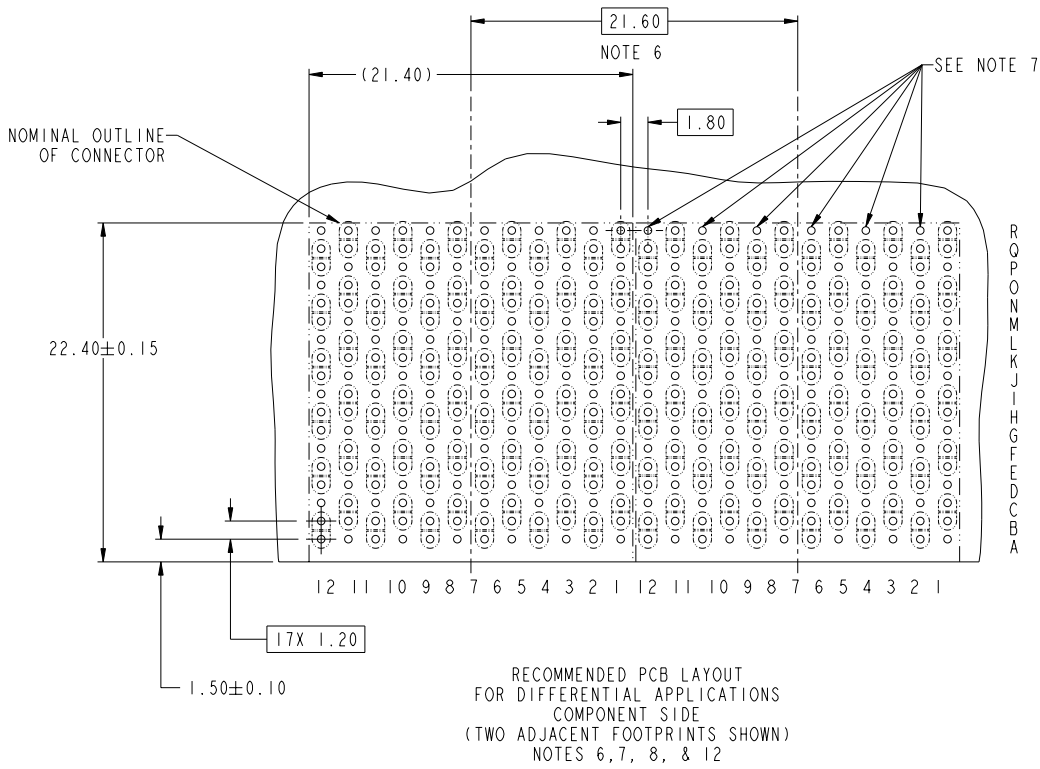
1

2

3



Copyright FCI.



Copyright FCI.

	Title	ZipLine R/A REC ASSY	dwg. no.	10088322	Rev.	A
		6 PR.12 IMLA, 1.8MM PITCH, 21.6MM, HP SPECIAL				
	catalog no.			CUSTOMER	sheet 2 of 3	

REV 7 - 2006-08-17

1

2

3

PDM: Rev:A STATUS: Released Printed: Dec 01, 2010

PRODUCT NUMBER	PRESS-FIT TAIL PLATING TYPE
10088322-101	TIN/LEAD ALLOY OVER NICKEL
10088322-101LF	TIN OVER NICKEL (LEAD FREE)

A

B

C

D

A

B


C

D

- ① - CONNECTOR MATERIALS:  
HOUSING: HIGH TEMP THERMOPLASTIC, BLACK, UL94-V0  
IMLA PLASTIC: HIGH TEMP THERMOPLASTIC, BLACK, UL94-V0  
CONTACT: COPPER ALLOY  
ORGANIZER: STAINLESS STEEL
- 2 - CONTACT PLATING:  
SEPARABLE INTERFACE:  
PERFORMANCE-BASED PLATING, QUALIFIED TO MEET THE REQUIREMENTS OF FCI PRODUCT SPECIFICATION GS-12-452 INCLUDING TELCORDIA GR-1217-CORE (NOVEMBER 1995) CENTRAL OFFICE TEST SEQUENCE  
  
PRESS-FIT TAILS: SEE TABLE
- 3 - PRODUCT SPECIFICATION: GS-12-452
- 4 - APPLICATION SPECIFICATION: GS-20-094
- ⑤ - PRODUCT MARKING, (PART NUMBER & LOT CODE), ON THIS SURFACE.
- ⑥ - THE MINIMUM CENTERLINE SPACING BETWEEN ADJACENT MODULES IS 21.6MM.
- ⑦ - THERE IS NO GROUND BUSSING WITHIN THE CONNECTOR EXCEPT FOR POSITIONS R2,R4,R6,R8,R10,& R12. THESE MUST BE ASSIGNED AS GROUNDS.
- ⑧ - REFER TO CUSTOMER DRAWING 10045979 FOR INFORMATION ON PCB HOLE DIAMETERS AND PLATING OPTIONS
- 9 - LEAD FREE PRODUCT MEETS THE EUROPEAN UNION DIRECTIVES & OTHER COUNTRY REGULATIONS AS DESCRIBED IN GS-22-008
- 10 - THE HOUSING WILL WITHSTAND EXPOSURE TO 260°C PEAK TEMPERATURE FOR 40 SECONDS IN A CONVECTION, INFRA-RED, OR VAPOR PHASE REFLOW OVEN.
- 11 - PACKAGING MEETS GS-14-920 LEAD FREE LABELING SPECIFICATION.
- ⑫ - THIS PRODUCT CONTAINS A CUSTOM LOAD PATTERN. THE DIFFERENTIAL PAIRS WITHIN COLUMNS HAS BEEN REVESED FROM STANDARD PRODUCT.



Copyright FCI.

	Title ZipLine R/A REC ASSY 6 PR.12 IMLA,1.8MM PITCH,21.6MM, HP SPECIAL	Dwg. no. 10088322	Rev. A
	catalog no.	CUSTOMER	sheet 3 of 3

REV. 1 - 2004-08-17

1

2

3

PDM: Rev:A

STATUS: Released

Printed: Dec 01, 2010