

## Excellent Integrated System Limited

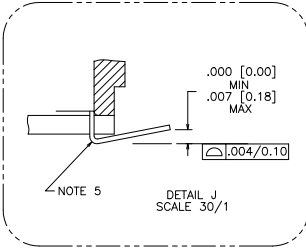
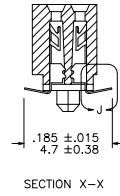
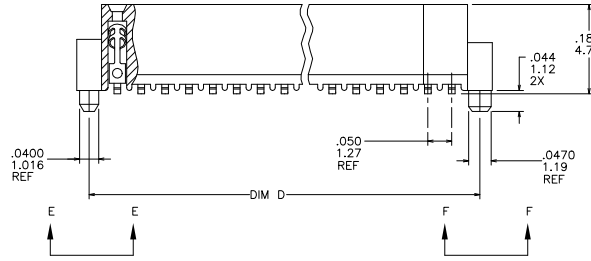
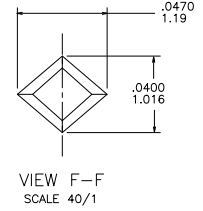
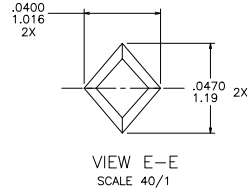
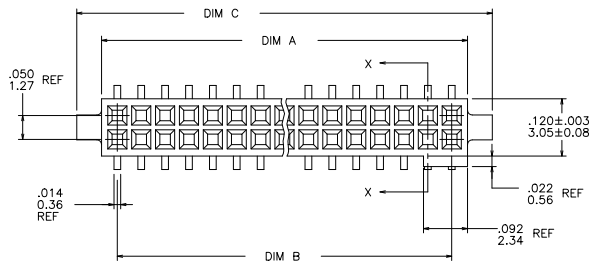
Stocking Distributor

Click to view price, real time Inventory, Delivery & Lifecycle Information:

[FCI](#)  
[91872-620TRLF](#)

For any questions, you can email us directly:  
[sales@integrated-circuit.com](mailto:sales@integrated-circuit.com)

PRODUCT NUMBER  
SEE TABLE



|            |             |                     |            |                            |
|------------|-------------|---------------------|------------|----------------------------|
| matl. code | surface     | tolerance           | projection | product family             |
| -          | ISO 1302 ✓  | ISO 406<br>ISO 1101 | ISO 10     | RIB CAGE                   |
| tr         | ecn no      | dr                  | date       | title                      |
| K          | V11674      | CRG                 | 7/12/01    | .050/1.27cc V.C.C. SMT     |
| L          | M05-0123    | ERE                 | 6/10/06    | w/POL. .044/1.12 SHORT PEG |
| M          | M06-0225    | ERE                 | 6/12/06    | dwg no                     |
| N          | M06-0370    | MHT                 | 9/26/06    | sheet 1 of 3 size          |
| P          | M09-0058    | MHT                 | 4/06/09    | 91872                      |
| R          | N11-0168    | YO                  | 5/20/11    | A3                         |
| S          | BX-N-010204 | YO                  | 2/8/12     | type                       |
| sheet      | revision    | S                   | S          | Product                    |
| index      | sheet       | 1                   | 2          | Customer                   |
|            |             |                     | 3          | Drawing                    |

PDS: Rev :S

STATUS: Released

Printed: Sep 11, 2013

| PRODUCT NO.<br>NOTE 7 | SIZE   | DIM A       | DIM B       | DIM C       | DIM D         | SPECIAL<br>PACKAGING | TAPE WIDTH<br>PITCH | PIECES<br>PER REEL |
|-----------------------|--------|-------------|-------------|-------------|---------------|----------------------|---------------------|--------------------|
| 91872-605             | 2 X 5  | .266/6.76   | .200/5.08   | .370/9.40   | .3200/8.128   | NONE                 | -                   | -                  |
| -610                  | 2 X 10 | .516/13.11  | .450/11.43  | .620/15.75  | .5700/14.478  | NONE                 | -                   | -                  |
| -615                  | 2 X 15 | .766/19.46  | .700/17.78  | .870/22.10  | .8200/20.828  | NONE                 | -                   | -                  |
| -620                  | 2 X 20 | 1.016/25.81 | .950/24.13  | 1.120/28.45 | 1.0700/27.178 | NOTE 10              | 44 mm<br>12 mm      | 500                |
| -625                  | 2 X 25 | 1.266/32.16 | 1.200/30.48 | 1.370/34.80 | 1.3200/33.528 | NONE                 | -                   | -                  |
| -630                  | 2 X 30 | 1.516/38.51 | 1.450/36.83 | 1.620/41.15 | 1.5700/39.878 | NONE                 | -                   | -                  |
| -635                  | 2 X 35 | 1.766/44.86 | 1.700/43.18 | 1.870/47.50 | 1.8200/46.228 | NONE                 | -                   | -                  |
| -640                  | 2 X 40 | 2.016/51.21 | 1.950/49.53 | 2.120/53.85 | 2.0700/52.578 | NONE                 | -                   | -                  |
| -645                  | 2 X 45 | 2.266/57.56 | 2.200/55.88 | 2.370/60.20 | 2.3200/58.928 | NONE                 | -                   | -                  |
| 91872-650             | 2 X 50 | 2.516/63.91 | 2.450/62.23 | 2.620/66.55 | 2.5700/65.278 | NONE                 | -                   | -                  |

NOTES :

- ① HOUSING MATERIAL :  
GLASS FILLED THERMOPLASTIC FLAME RETARDANT PER UL 94V-0  
COLOR: NATURAL
- ② TERMINAL MATERIAL : BeCu
- ③ TERMINAL PLATING :  
30u"/.76u MIN HARD GOLD OR GXT OVER Ni ON CONTACT ZONES.  
100u"/2.54u MIN Sn OVER Ni IN SOLDERING ZONES.  
OTHERWISE GOLD FLASH OR UNPLATED.
4. APPLICATION INFORMATION :
  - A. RECOMMENDED MOUNTING PAD PATTERN IS SHOWN IN FIGURE "A".
  - B. MATING PINS TO BE .0176/0.447 TO .0181/0.459 THICK.
  - C. MATING PIN TIPS TO BE IN TRUE POSITION TO MATING GRID WITHIN .008/0.20 DIA.
  - D. SUGGESTED MATING PIN LENGTH .130/3.30 ±.010/0.25.
- ⑤ LEAD TIPS TO BE ABOVE HEEL UP TO .007/0.18 MAX.  
COPLANARITY TO BE MEASURED AT LOWEST POINT (HEEL).
6. ADD "CT" TO END DASH NUMBER FOR CONNECTOR WITH VACUUM CAP IN TUBE.
- ⑦ ADD "LF" SUFFIX AT THE END OF PART NUMBER FOR LEAD FREE OPTION.
- ⑧ THIS PRODUCT MEETS EUROPEAN UNION DIRECTIVES AND OTHER COUNTRY REGULATION AS DESCRIBED IN GS-22-008.
9. THE HOUSING WILL WITHSTAND EXPOSURE TO 260°C PEAK TEMPERATURE FOR 20 SECONDS IN A CONVECTION INFRA-RED OR VAPOR PHASE REFLOW OVEN. SEE APPLICATION NOTES/PROCEDURES IF THEY ARE AVAILABLE.
- ⑩ ADD "TR" TO END OF DASH NUMBER FOR TAPE AND REEL PACKAGING WITH CAP. TOOLED ONLY FOR NOTED CONNECTORS.

11 PRODUCT SPECIFICATION PER BUS-12-087.

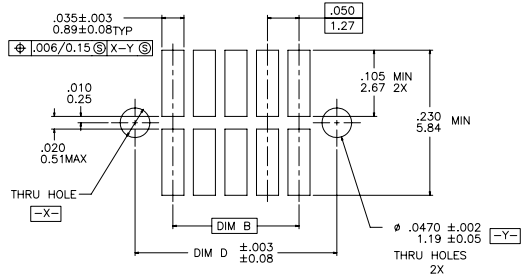


FIGURE A  
RECOMMENDED  
P.C.B. LAYOUT

|            |          |         |                     |                                       |  |            |                               |
|------------|----------|---------|---------------------|---------------------------------------|--|------------|-------------------------------|
| matl. code | -        | surface | ISO 1302 ✓          | tolerance                             | ISO 406<br>ISO 1101                            | projection | product family                |
| ltr        | ecn no   | dr      | date                | tolerances unless otherwise specified |  |            | RIB CAGE                      |
| S          |          |         |                     | angles                                | linear   | INCH/MM    | title                         |
|            |          |         |                     | α±                                    | xx ±.01/3<br>xxx ±.005/13<br>xxxx ±.0020/0.050 | scale 4:1  | .050/1.27cc V.C.C. SMT        |
|            |          | dr      | M. CRONMAN 12/10/91 |                                       |  |            | w/POL. .044/1.12 SHORT PEG    |
|            |          | enrg    | J. SHUEY 8/11/92    |                                       |  |            | dwg no                        |
|            |          | chr     | G. GINGRICH 8/11/92 |                                       |  |            | 91872                         |
|            |          | appd    | J. SHUEY 8/11/92    |                                       |  |            | sheet 2 of 3 size             |
| sheet      | revision |         |                     |                                       |  |            | A3                            |
| index      | sheet    |         |                     |                                       |  |            | type Product Customer Drawing |

4 PDS: Rev :S

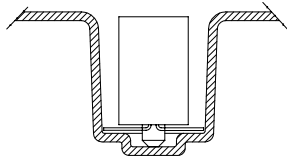
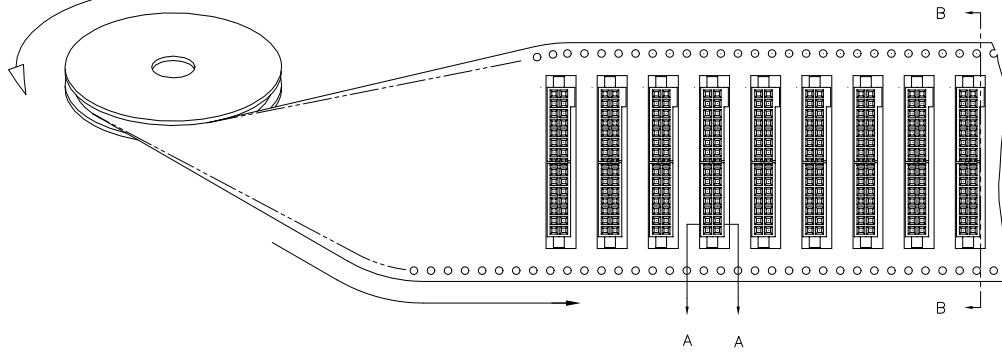
STATUS: released

Printed: Sep 11, 2013

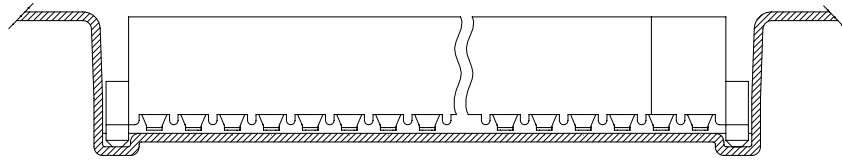
REFERENCE ONLY

UNREELING  
DIRECTION

TAPE WIDTH'S 32mm AND ABOVE HAS BOTH FEED TRACKS,  
BELOW 32mm HAS TOP FEED TRACK ONLY.



SECTION A-A



SECTION B-B

|            |             |               |            |                               |
|------------|-------------|---------------|------------|-------------------------------|
| matl. code | surface     | tolerance     | projection | product family                |
| -          | ISO 1302    | ISO 406       | ISO 1101   | RIB CAGE                      |
| tr         | ecn         | no            | dr         | date                          |
| S          |             |               |            |                               |
| angles     | linear      | xx ±.01/3     | INCH/MM    | title                         |
| °±"        |             | xxx ±.005/.13 | scale 4:1  | .050/1.27cc V.C.C. SMT        |
| dr         | M. CRONMAN  | 12/10/91      |            | w/POL. .044/1.12 SHORT PEG    |
| enrg       | J. SHUEY    | 8/11/92       |            | dwg no                        |
| chr        | G. GINGRICH | 8/11/92       |            | 91872                         |
| appd       | J. SHUEY    | 8/11/92       |            | sheet 3 of 3 size             |
| sheet      | revision    |               |            | A3                            |
| index      | sheet       |               |            | type Product Customer Drawing |

4 PDS: Rev :S STATUS: released Printed: Sep 11, 2013

FCI  
FCIconnect.com  
Copyright FCI