

Excellent Integrated System Limited

Stocking Distributor

Click to view price, real time Inventory, Delivery & Lifecycle Information:

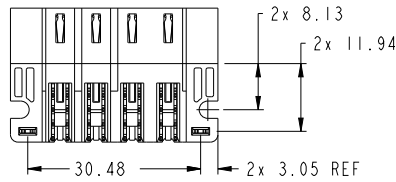
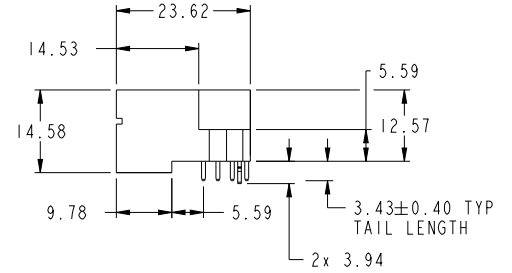
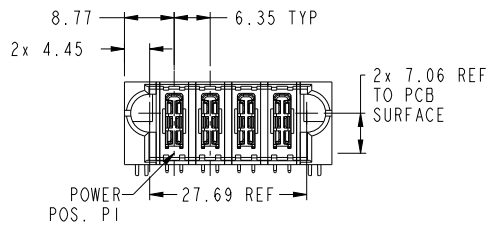
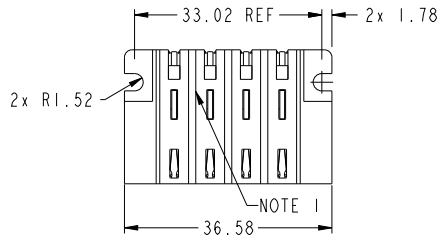
[FCI](#)

[10106124-4000001LF](#)

For any questions, you can email us directly:

sales@integrated-circuit.com

PRODUCT NUMBER SEE SHEET 2



spec ref	*	dr	Rainbow Zhan	201409014	projection	MM	size	A3	scale	3:2
tolerance std	ASME Y14.5	TOLERANCES UNLESS OTHERWISE SPECIFIED	eng	Rainbow Zhan	201410051		ecn no	-	rel level	Released
surface	linear	0.X ±0.5 0.XX ±0.25 0.XXX ±0.10	chr	Li-Hu	201410036		product family	PwrBlade+	rev	A
	angular	0° ±2°	appr	Pai-Ming Zhang	201410031	cat. no.	10106124-4000001	Product - Customer Drw	sheet 1 of 3	

Print Date - REV C - 2010-04-09

1

2

3

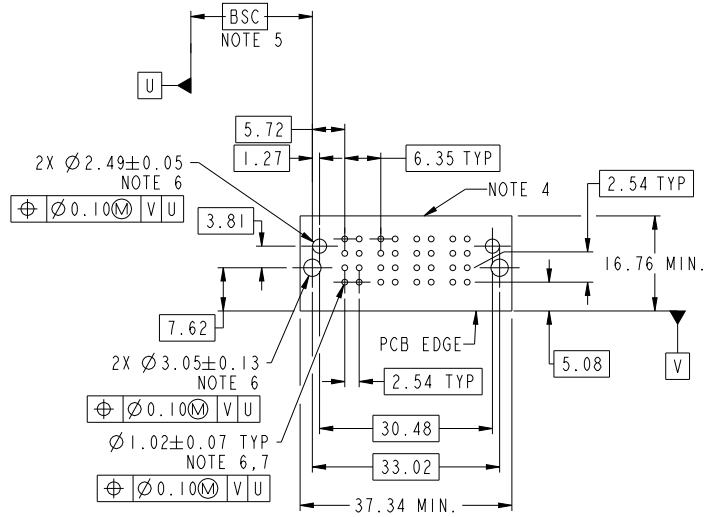
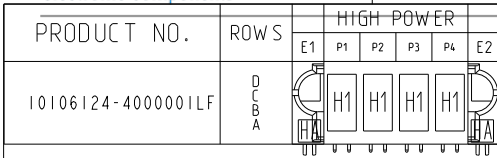
PDS: Rev :A

STATUS:Released

Printed: Oct 31, 2014



Copyright FCI.



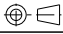


CODE	DESCRIPTION
HI	STD HIGH POWER CONTACT (3.43)
HA	METAL HOLD DOWN

dr	Rainbow Zhan	2014/08/14	projection	MM	size	A3	scale	3:2
eng	Rainbow Zhan	2014/10/31			ecn no.	-	rel level	Released
chr	Li-Hu	2014/10/30			product family	PwrBlade+	rel level	Released
appr	Pai-Ming Zhang	2014/10/31			cat. no.	10106124-4000001	rev	A
www.fci.com			title 4HP RA STB HEADER		Product - Customer Drw		sheet 2 of 3	

Copyright FCI.

NOTES:

- 1) "FCI", PART NUMBER AND DATE CODE TO BE MARKED ON THIS SURFACE.
THE MARK CAN BE OMITTED IF THERE IS NOT ENOUGH SPACE ON THIS SURFACE.
- 2) MATERIALS:
-HOUSING - GLASS FILLED WITH HIGH TEMP THERMOPLASTIC, UL94V-0.
-SIGNAL CONTACT - COPPER ALLOY.
-POWER CONTACT - HIGH CONDUCTIVITY COPPER ALLOY.
- 3) PLATING SPECIFICATION REFER TO FCI 10116351
- 4) DENOTES CONNECTOR KEEP OUT ZONE.
- 5) DATUM AND BASIC DIMENIONS WERE ESTABLISHED BY CUSTOMER.
- 6) ALL HOLE DIAMETERS ARE FINISHED HOLE SIZES.
- 7) 1.15 ± 0.025 MM DRILLED HOLE PLATED WITH 0.00762MM MIN Sn
OVER 0.0254-0.0762MM Cu PLATING TO ACHIEVE A 1.02 ± 0.07 MM HOLE.
- 8) PRODUCT SPECIFICATION REFER TO FCI GS-12-658.
APPLICATION SPECIFICATION REFER TO FCI GS-20-141.
PRODUCT PACKAGED IN TRAYS, REFER TO FCI GS-14-1502.

dr	Rainbow Zhan	201409074	projection	MM	size	A3	scale	3:2
eng	Rainbow Zhan	201410051			ecn no	-	rel level	
chr	Li-Hu	201410036			product family	PwrBlade+	Released	
appr	Pai-Ming Zhang	201410031			eng no	10106124-4000001		rev
		title 4HP RA STB HEADER						A
www.fci.com		cat. no.	Product - Customer Drw		sheet 3 of 3			



Copyright FCI.