

## Excellent Integrated System Limited

Stocking Distributor

Click to view price, real time Inventory, Delivery & Lifecycle Information:

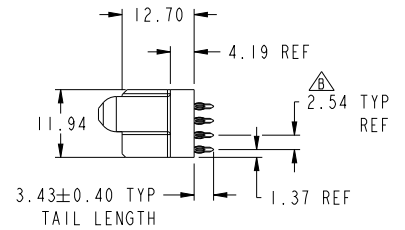
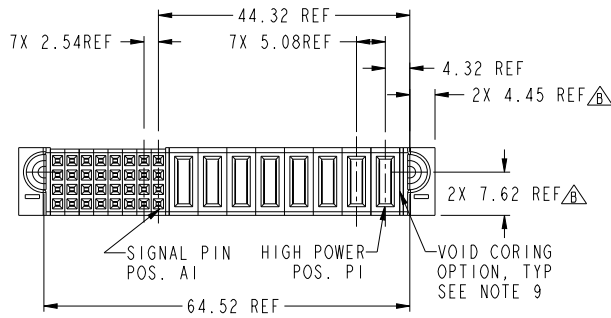
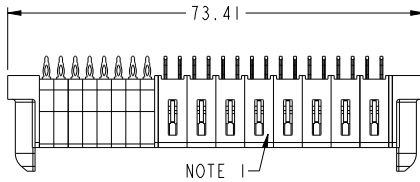
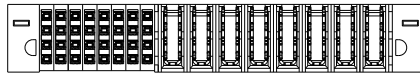
[FCI](#)

[10106139-8008001LF](#)

For any questions, you can email us directly:

[sales@integrated-circuit.com](mailto:sales@integrated-circuit.com)

PRODUCT NUMBER SEE SHEET 2



spec ref	dr	Peng-Bing Fu	20120720	projection	MM	size	A3	scale	3:2
tolerance std	eng	Peng-Bing Fu	20121115			ecn no	ELX-00-015146-1	rel level	Released
ASME Y14.5	chr	Tian-Xu Huang	20121115						
	appr	Pai-Ming Zhang	20121115						
TOLERANCES UNLESS OTHERWISE SPECIFIED		www.fci.com		product family	PowerBlade+	rel level	Released		
surface	linear	0.X	±0.50	title		eng no	10106139-8008001	rev	B
		0.XX	±0.25	8HDP + 32S		Product - Customer Drw			
		0.XXX	±0.10	VT PF RECEPTACLE		sheet 1 of 3			
ASME Y14.5	angular	0°	±2°	cat. no.		STATUS: Released			

Print Date - REV C - 2009-04-20

1

2

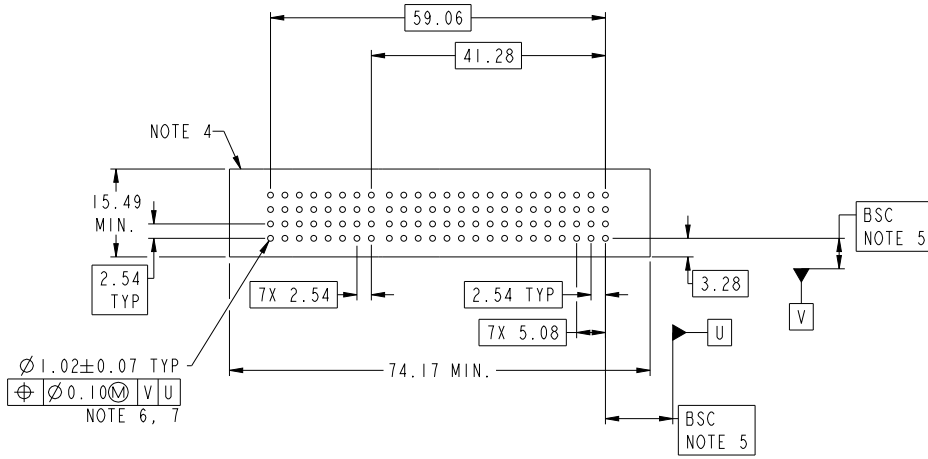
3

PDS: Rev B

STATUS: Released

Printed: Nov 14, 2012

PRODUCT NO.	ROWS	SIGNAL												HIGH POWER								CODE		DESCRIPTION			
		E1	8	7	6	5	4	3	2	1	P8	P7	P6	P5	P4	P3	P2	P1	E2	F	HD	HG					
10106139-8008001LF	D C B A																					F	HD	HG	STD SIGNAL CONTACT	MFBL HIGH POWER CONTACT (3.43)	STD HIGH POWER CONTACT (3.43)

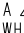




dr	Peng-Bing Fu	20120720	projection	MM	size	A3	scale	3:2	
eng	Peng-Bing Fu	20121015			ecn no	ELX-00-01546-1			
chr	Tian-Xu Huang	20121115			product family	PowerBlade+	rel level	Released	
appr	Pai-Ming Zhang	20121115			title	8HDP + 32S		rev	B
www.fci.com			cat. no.		Product - Customer Drw		sheet 2 of 3		



Copyright FCI.

NOTES:

- 1) "FCI", PART NUMBER AND DATE CODE TO BE MARKED ON THIS SURFACE.  
THE MARK CAN BE OMITTED IF THERE IS NOT ENOUGH SPACE ON THIS SURFACE.
- 2) MATERIALS:  
-HOUSING - GLASS FILLED WITH HIGH TEMP THERMOPLASTIC, UL94V-0.  
-SIGNAL CONTACT - COPPER ALLOY.  
-POWER CONTACT - HIGH CONDUCTIVITY COPPER ALLOY.
- 3) PLATING SPECIFICATION REFER TO FCI 10116351
- 4) DENOTES CONNECTOR KEEP OUT ZONE.
- 5) DATUM AND BASIC DIMENSIONS WERE ESTABLISHED BY CUSTOMER.
- 6) ALL HOLE DIAMETERS ARE FINISHED HOLE SIZES.
- 7)  $1.15 \pm 0.025$ MM DRILLED HOLE PLATED WITH 0.00762MM MIN Sn  
OVER 0.0254-0.0762MM Cu PLATING TO ACHIEVE A  $1.02 \pm 0.07$ MM HOLE.
- 8) PRODUCT SPECIFICATION REFER TO FCI GS-12-658.  
APPLICATION SPECIFICATION REFER TO FCI GS-20-141.  
PRODUCT PACKAGED IN TRAYS, REFER TO FCI GS-14-1502.
- 9) THE VOID CORING IN BETWEEN POWER MODULES, SIGNAL  
MODULES AND END MODULES ARE OPTIONAL AND THE SHAPE  
MAY BE DIFFERENT FOR OPTIMIZE THE MOLDING PROCESS. THE  
VOID CORING WILL NOT EFFECT TO PRODUCT FUNCTION.
- 10) A  SYMBOL WILL BE NEXT TO ANY DIMENSION, VIEW, OR NOTE  
WHICH HAS BEEN MODIFIED WITH THE CURRENT DRAWING REVISION.

dr	Peng-Bing Fu	20120720	projection	MM	size	A3	scale	1:1			
eng	Peng-Bing Fu	20121113		← →	ecn no	ELK-00-01846-1	rel level	Released			
chr	Tian-Xu Huang	20121113									
appr	Pai-Ming Zhang	20121113	product family	PowerBlade+							
			title		8HDP + 32S		eng no		10106139-8008001	rev	B
www.fci.com			cat. no.		Product - Customer Draw		sheet		3 of 3		



Copyright © FCI.