

## Excellent Integrated System Limited

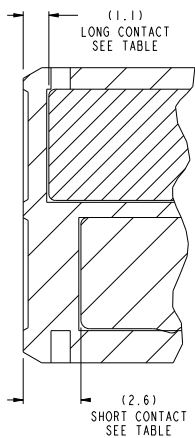
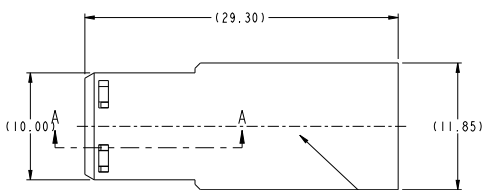
Stocking Distributor

Click to view price, real time Inventory, Delivery & Lifecycle Information:

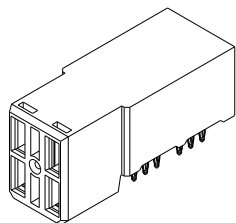
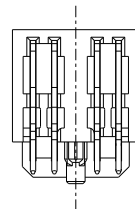
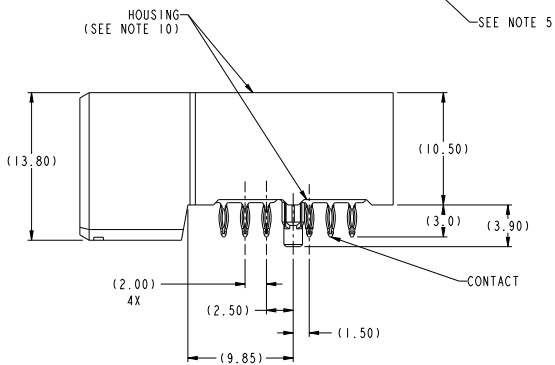
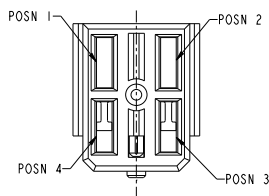
[FCI](#)  
[10098550-4444P00LF](#)

For any questions, you can email us directly:  
[sales@integrated-circuit.com](mailto:sales@integrated-circuit.com)

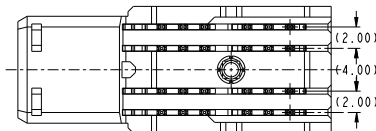
PRODUCT NUMBER ("LF" DENOTES LEAD-FREE)	CONTACT PLATING NOTE	CONTACT DEPTH (SEE SECTION A-A)				ROHS COMPATIBILITY
		POSN 1	POSN 2	POSN 3	POSN 4	
10098550-4444P00LF	2a	LONG	LONG	LONG	LONG	SEE NOTE 8
10098550-5555P00LF	2a	SHORT	SHORT	SHORT	SHORT	SEE NOTE 8
10098550-5545P00LF	2a	SHORT	SHORT	LONG	SHORT	SEE NOTE 8



SECTION A-A  
SCALE 8:1



SCALE 3:1



spec. ref.	GS-12-220	dr.	Chandrabhan	approved	projection	MM	size	A2	scale	4:1
tolerance std	ASME Y14.5	eng	Chandrabhan	checked	product family	2mm High Power	acc no		rel level	Released
surface	linear	0.1	±0.3	FCI	Co-planar R/A Receptacle Assy		10098550	rev	C	
		0.2X	±0.10	www.fci.com	Airmax Power 2x2 with Lubrication					
	angular	0.2X	±0.050		Product	Customer Draw	sheet 1 of 2			

PDS: Rev :C

STATUS: Released

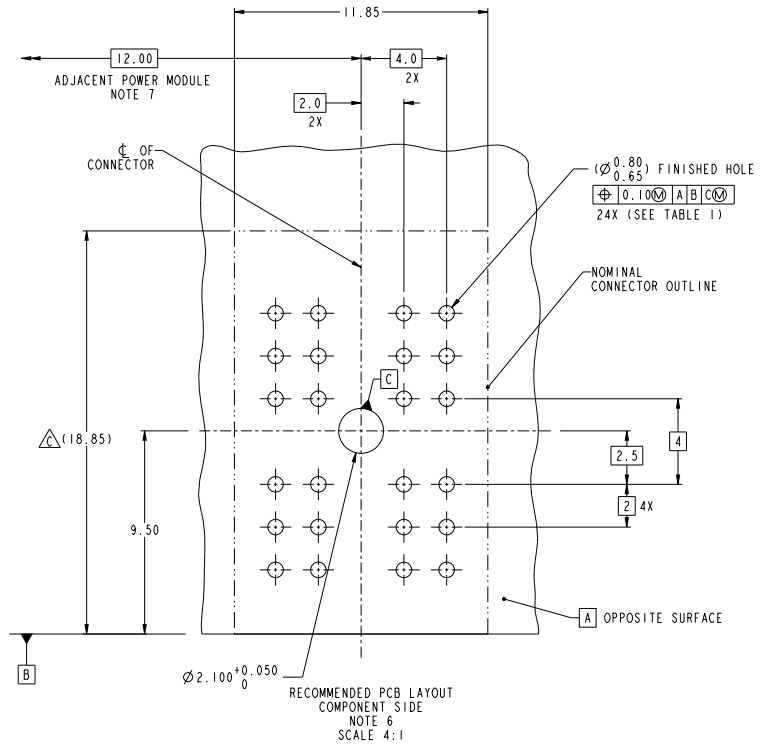
Printed: Aug 20, 2014

Copyright FCI.

TOP LAYER DESCRIPTION	TABLE I PLATED THROUGH-HOLE REQUIREMENTS							
	DRILLED HOLE DIAMETER	COPPER THICKNESS	TIN-LEAD THICKNESS	NICKEL THICKNESS	GOLD THICKNESS	TIN THICKNESS	SILVER THICKNESS	FINISHED HOLE DIAMETER
TIN-LEAD	0.81-0.86 (0.85 DRILL)	0.025 - 0.050	0.005 - 0.015	--	--	--	--	0.65 - 0.80
IMMERSION TIN	0.81-0.86 (0.85 DRILL)	0.025 - 0.050	--	--	--	0.9 - 1.5um	--	0.70 - 0.80
IMMERSION SILVER	0.81-0.86 (0.85 DRILL)	0.025 - 0.050	--	--	--	--	0.15 - 0.65um	0.70 - 0.80
COPPER (SEE NOTE 11)	0.81-0.86 (0.85 DRILL)	0.025 - 0.050	--	--	--	--	--	0.70 - 0.80
GOLD	0.81-0.86 (0.85 DRILL)	0.025 - 0.050	--	0.003 - 0.007	FLASH UP TO 0.0002	--	--	0.69 - 0.80

NOTES:

1. CONNECTOR MATERIALS:  
HOUSING: HIGH TEMPERATURE THERMOPLASTIC, BLACK  
UL 94V-0 COMPLIANT  
CONTACT: HIGH PERFORMANCE COPPER ALLOY
2. a) CONTACT PLATING (LEAD FREE):  
PRESS-FIT TAIL: 0.5um MIN MATTE TIN OVER 0.5um MIN NICKEL.  
SEPARABLE INTERFACE: 0.76um MIN GOLD OVER 2.54um MIN NICKEL.  
LUBRICATED WITH ZIPCHEM ZC026  
b) CONTACT PLATING (LEADED): NOT APPLICABLE  
PRESS-FIT TAIL: NOT APPLICABLE  
SEPARABLE INTERFACE: NOT APPLICABLE
3. PRODUCT SPECIFICATION: GS-12-220
4. APPLICATION SPECIFICATION: GS-20-023
5. PRODUCT MARKING (PRODUCT NUMBER & DATE CODE) ON HOUSING IN AREA SHOWN.
6. MINIMUM NOMINAL PCB THICKNESS: 1.6mm
7. REFER TO CUSTOMER DRAWING 10035911 FOR INFORMATION REGARDING PCB LAYOUT OF POWER AND GUIDE MODULES RELATIVE TO SIGNAL MODULES.
8. PRODUCT MEETS EUROPEAN UNION DIRECTIVES AND OTHER COUNTRY REGULATIONS AS DESCRIBED IN FCI SPECIFICATION GS-22-008.
9. PACKAGING MEETS FCI SPECIFICATION GS-14-920.
10. HOUSING COMPONENT WILL WITHSTAND EXPOSURE TO 260°C PEAK TEMPERATURE FOR 60 SECONDS IN A CONVECTION, INFRA-RED, OR VAPOR PHASE REFLOW OVEN.
11. COPPER PLATING THICKNESS IN CENTER OF VIA-HOLE CAN BE NO MORE THAN 0.003 LESS THAN OTHER AREAS.
12. A  $\Delta$  SYMBOL WILL BE NEXT TO ANY DIMENSIONS, VIEW OR NOTE WHICH HAS BEEN MODIFIED WITH THE CURRENT DRAWING REVISION



spec. ref.	GS-12-220	dr.	Chandrabhan	approved	projection	MM	size	A2	scale	8:1
tolerance std	ASME Y14.5	eng	Chandrabhan	checked	product family	Co-planar R/A Receptacle Assy	acc no	10098550	rel level	Released
surface	linear	0.1	±0.3	FCI	Product	Airmax Power 2x2 with Lubrication	rev	C	sheet	2 of 2
	angular	0.25	±0.10	www.fci.com	Product	Customer Draw	cat. no.			

PDS: Rev :C

STATUS: Released

Printed: Aug 20, 2014