

Excellent Integrated System Limited

Stocking Distributor

Click to view price, real time Inventory, Delivery & Lifecycle Information:

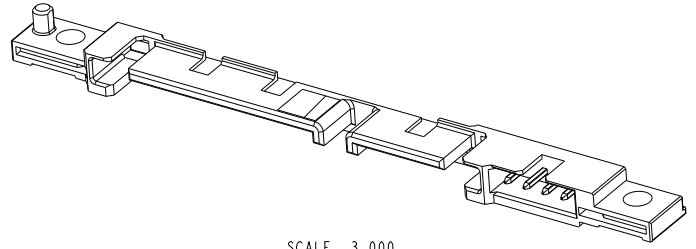
[FCI](#)

[10129130-002LF](#)

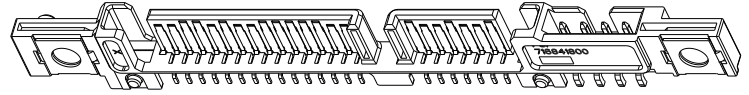
For any questions, you can email us directly:

sales@integrated-circuit.com

PRODUCT NO.	CUSTOMER P/N.	REMARK
10129130-001LF	NA	OBSOLETE
10129130-002LF	716841800	



SCALE 3.000



SCALE 3.000

NOTES:

- HOUSING: HIGH TEMPERATURE THERMOPLASTIC, BLACK, UL94V-0, REGRIND 20% MAX.
CONTACT, JUMPER & GROUND PLATE: COPPER ALLOY
- FINISH:
CONTACT: 1.27~2.54um Ni UNDERPLATE OVERALL, 0.38um MIN. Au ON CONTACT AREA, 1.91um MIN. 100% MATTE Sn(LEAD-FREE) ON SOLDERTAILS
JUMPER: 1.27~2.54um Ni UNDERPLATE OVERALL, 0.38um MIN. Au ON CONTACT AREA, 1.91um MIN. 100% MATTE Sn(LEAD-FREE) ON SOLDERTAILS
GROUND PLATE: 1.91um MIN. 100% MATTE Sn(LEAD-FREE) OVER 1.27~2.54um Ni UNDERPLATE OVERALL
- FLAT AREA FREE FROM BURR AND FLASHES FOR VACUUM PICK-UP
- PRODUCT SPECIFICATION: GS-12-194
- PACKAGING SPECIFICATION: GS-14-952
- THIS PRODUCT MEETS EUROPEAN UNION DIRECTIVES AND OTHER COUNTRY REGULATIONS AS DESCRIBED IN GS-47-0004
- THE HOUSING WILL WITHSTAND EXPOSURE TO 260°C PEAK TEMPERATURE FOR 10 SECONDS IN A CONVECTION, INFRA-RED OR VAPOR PHASE REFLOW OVEN
- A SYMBOL WILL BE NEXT TO ANY DIMENSION, VIEW OR NOTE WHICH HAS BEEN MODIFIED WITH THE CURRENT DRAWING REVISION



Copyright FCI.

spec ref	dr	Jeffrey Lim	20150202	projection	MM	size	A3	scale	1.000
tolerance std	eng	Jeffrey Lim	20150209			ecn no	-	rel level	Released
TOLERANCES UNLESS OTHERWISE SPECIFIED			chr			-	product family		-
surface	linear	0.X	±0.45		title 2.5" LOW PROFILE SATA PLUG Z-HT. 2.87	cat. no. -	Product - Customer Drw	sheet 1 of 4	rev A
		0.XX	±0.15						
		0.XXX	±0.050						
angular	0°	±3°	www.fci.com						

Prod File - REC C - 2009-04-09

1

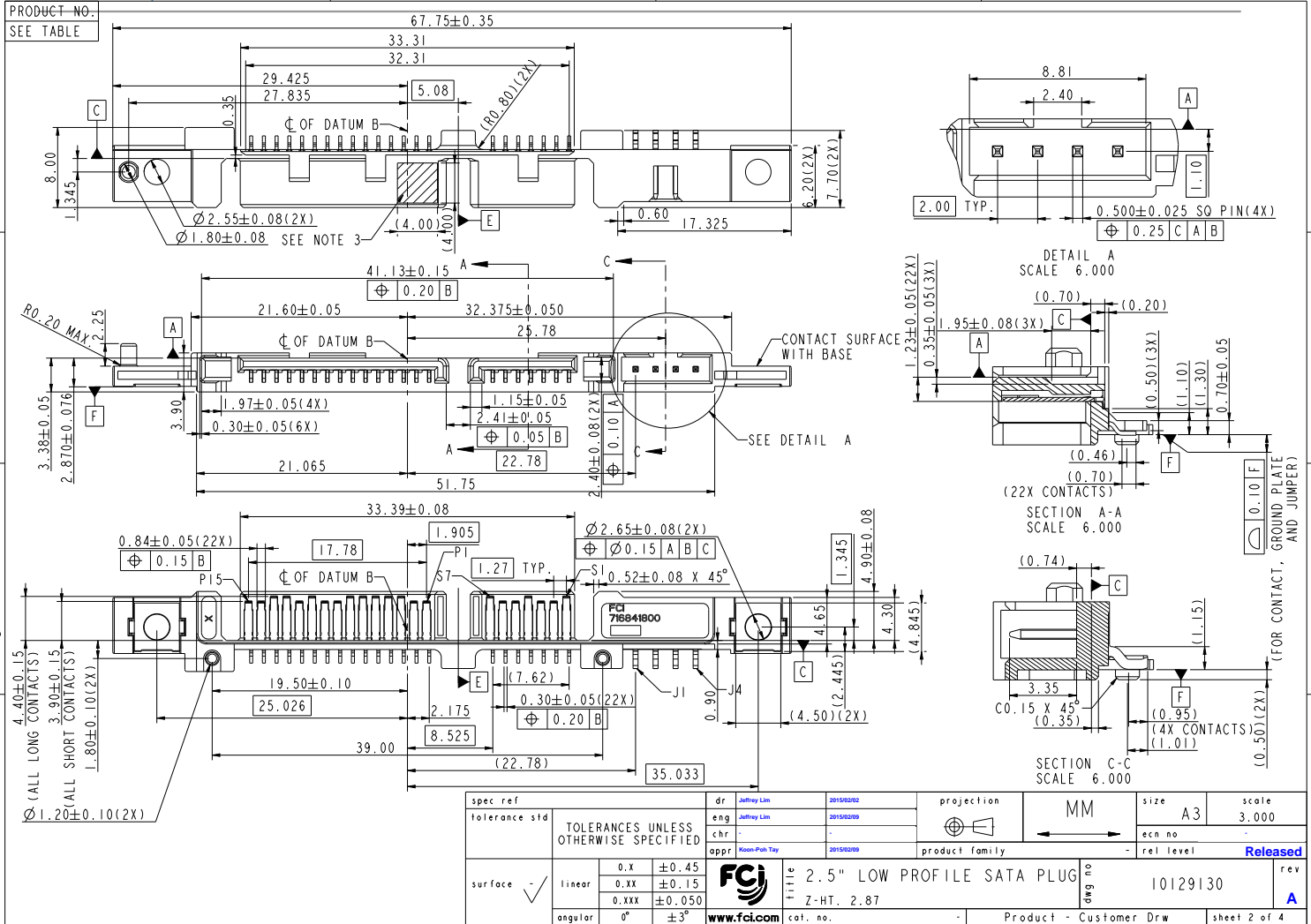
2

3

PDS: Rev :A

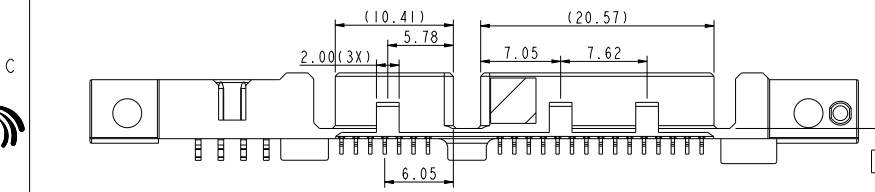
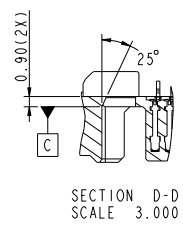
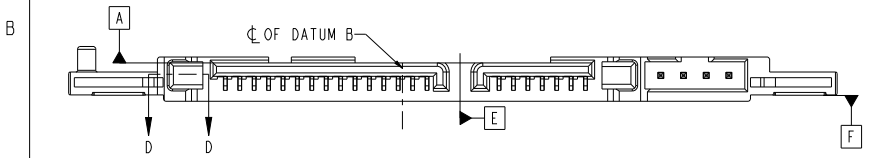
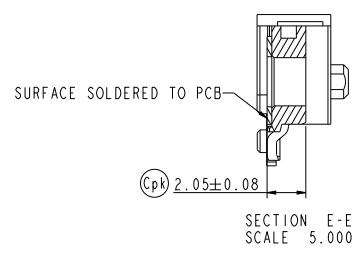
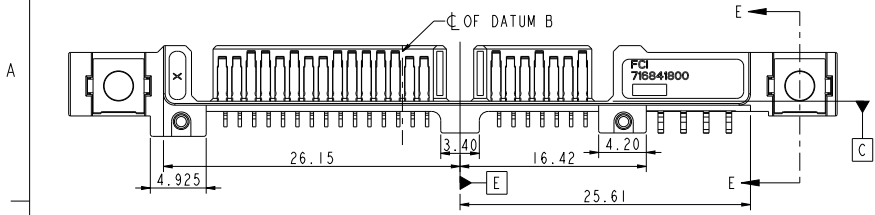
STATUS:Released

Printed: Feb 09, 2015



Copyright FCI.

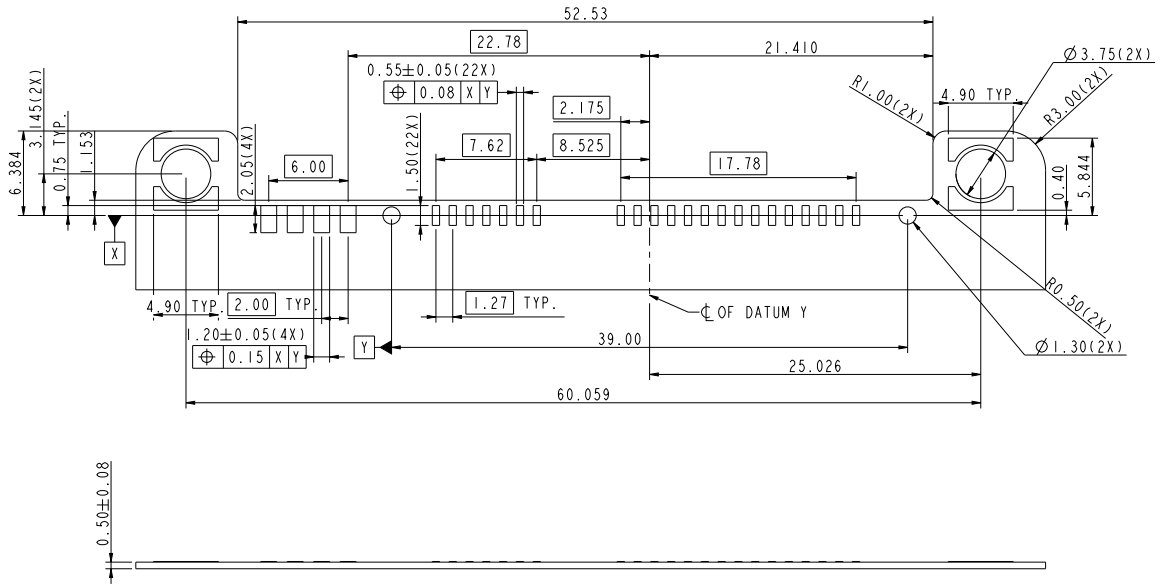
PRODUCT NO.
SEE TABLE



FCI
Copyright FCI.

spec ref	dr Jeffrey Lim	2015/02/02	projection	MM	size A3	scale 3.000
tolerance std	eng Jeffrey Lim	2015/02/09			ecn no	rel level
	chr					
	appr Moon-Pak Tay	2015/02/09			2.5" LOW PROFILE SATA PLUG Z-HT. 2.87	10129130 rev A
surface	linear	0.X ±0.45	www.fci.com		cat. no.	Product - Customer Drw sheet 3 of 4
		0.XX ±0.15				
		0.XXX ±0.050				
	angular	0° ±3°				

PRODUCT NO.
10129130-002LF



SCALE 3.500

RECOMMENDED PCB LAYOUT
(GENERAL TOLERANCE: ±0.05)

spec ref	dr Jeffrey Lim	2015/02/02	projection	MM	size A3	scale 3.500
tolerance std	eng Jeffrey Lim	2015/02/09			ecn no	
TOLERANCES UNLESS OTHERWISE SPECIFIED surface ✓	chr				rel level	Released
	appr Moon-Poh Tay	2015/02/09	product family		eng no	10129130
	linear	0.X ±0.45	0.XX ±0.15	0.XXX ±0.050	angular	0° ±3°
Product - Customer Drw			sheet 4 of 4			

