

Excellent Integrated System Limited

Stocking Distributor

Click to view price, real time Inventory, Delivery & Lifecycle Information:

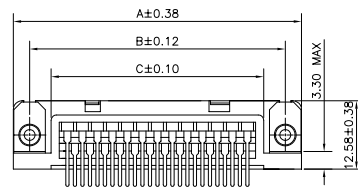
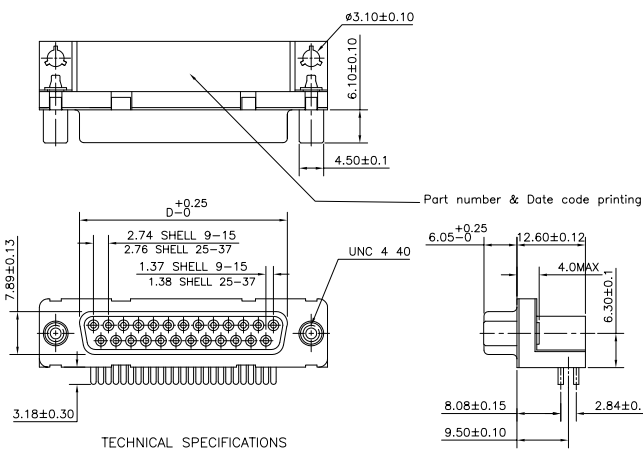
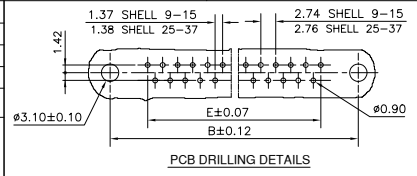
[FCI](#)

[ID25S33E4UV00LF](#)

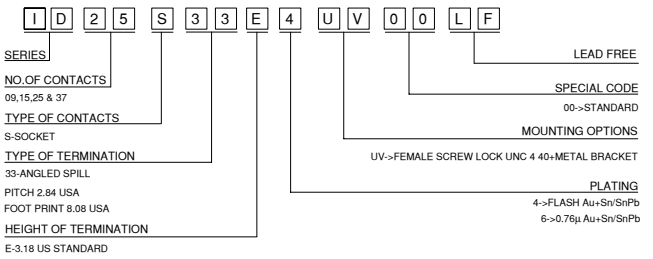
For any questions, you can email us directly:

sales@integrated-circuit.com

37	69.32	63.50	55.68	54.71	49.68
25	53.03	47.04	39.12	38.25	33.12
15	39.14	33.32	25.18	24.54	19.18
09	30.81	24.99	16.96	16.21	10.96
SHELL	A	B	C	D	E



ORDERING INFORMATION



- MATERIAL**
- SHELL : STEEL TIN/Zinc Cr 3 PLATED.
 - INSULATORS : SELF EXTINGUISHING BLACK POLYESTER UL CLASS 94V0
 - CONTACTS : COPPER ALLOY
 - PLATING : GOLD OVER NICKEL
 - ACTIVE ZONE : TIN LEAD OVER NICKEL
 - TERMINATION ZONE FOR LEAD FREE PLATING : 2µMIN.MATTE TIN TOP OVER
 - METAL BRACKET : BRASS, TIN/Zinc Cr 3 PLATED.
 - SCREW LOCK : BRASS, TIN/Zinc Cr 3 PLATED.
- ELECTRICAL DATA**
- MAX.CURRENT RATING : 5A
 - TEST VOLTAGE : 1000V
 - RATED VOLTAGE : 300V
 - CONTACT RESISTANCE : < 25mΩ
 - SHELL RESISTANCE : < 5mΩ
 - INSULATION RESISTANCE : > 5000MΩ
- ENVIRONMENTAL CHARACTERISTICS.**
- OPERATING TEMPERATURE RANGE : -55°C +125°C
- MECHANICAL CHARACTERISTICS**
- MATING/UNMATING CYCLES (MIN) : 200 (FLASH Au); 500 (0.76µ Au)
 - INSERTION/EXTRACTION FORCE PER CONTACT : 5 N Max / 0.3 N Min.
- Notes:**
- "This LF product meets European Union Directives and other country regulations as described in GS-22-008"
 - The housing will withstand exposure to 260°C peak temperature for 3.5 seconds in a wave solder application with a 1.6mm minimum thick circuit board.
 - Packaging as per GS-14-920

mat'l. code	SEE NOTE 4	surface	tolerance	projection	product family
ISO 1302	ISO 406 ISO 1101	tolerances unless otherwise specified	MM	DELTA-D	
tr	ecn no	dr	date	angles	linear
D	106-0074	GVI	2009/06/08	0°±1°	linear
dr		GEORGE V. JOSEPH	1998/12/16		
enr		GEORGE V. JOSEPH	1998/12/16		
chr		GEORGE V. JOSEPH	2006/06/08		
appd		K. V. SIVADAS	2006/06/08		
sheet index	revision sheet	D	1		