

Excellent Integrated System Limited

Stocking Distributor

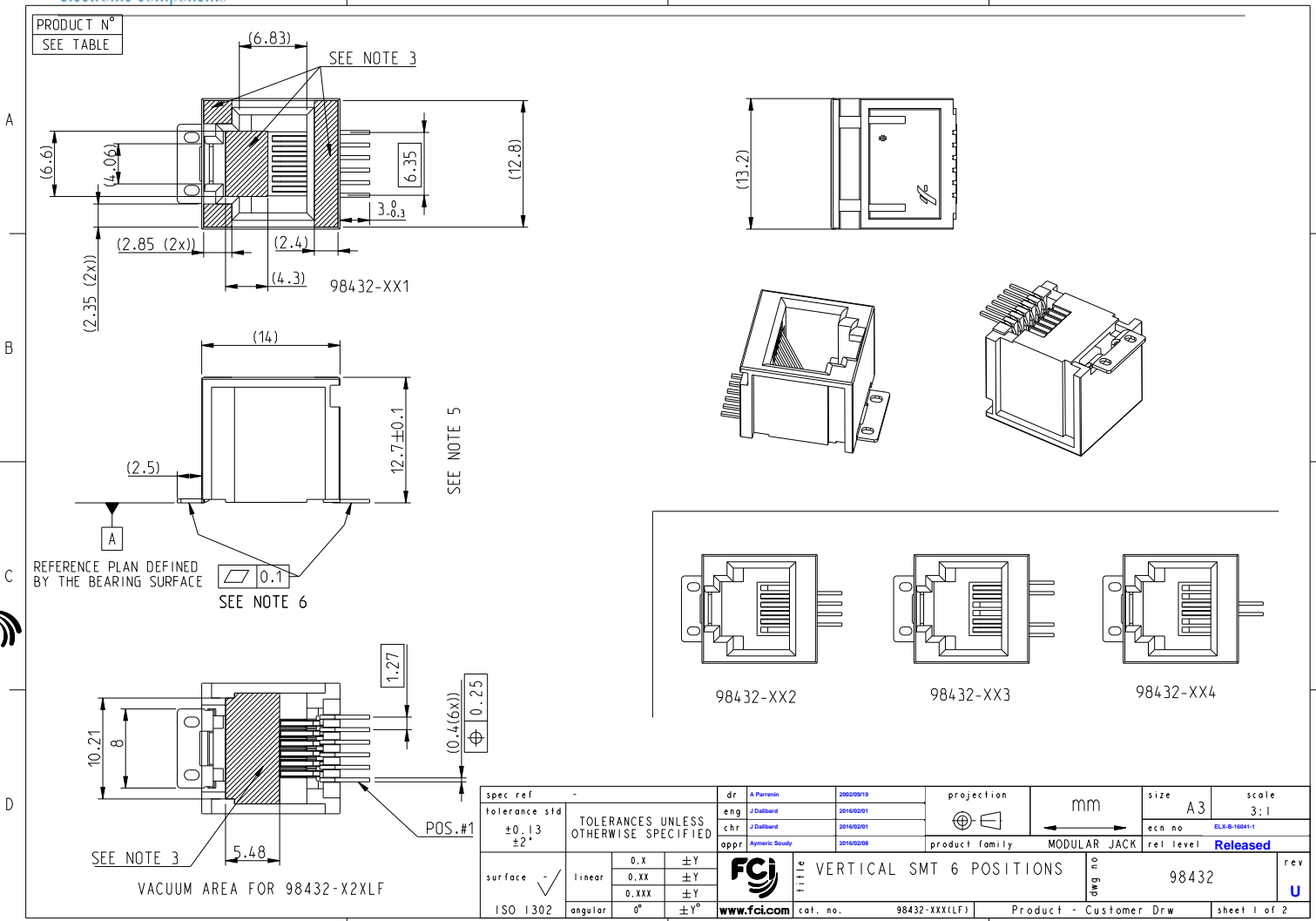
Click to view price, real time Inventory, Delivery & Lifecycle Information:

[FCI](#)

[98432-114LF](#)

For any questions, you can email us directly:

sales@integrated-circuit.com



Copyright FCI.

spec ref	-	dr	A Perron	20020919	projection	mm	size	A3	scale	3:1			
tolerance std	±0.13 ±2*	eng	J Dallard	20160209	chr	J Dallard	ecn no	ELX-10041-1	rel level	Released			
TOLERANCES UNLESS OTHERWISE SPECIFIED		appr	Americ Study	20160208	product family	MODULAR JACK	cat. no.	98432-XXX(LF)	Product - Customer Drw	sheet 1 of 2			
surface	ISO 1302	linear	0.X	±Y	0.XX	±Y	0.XXX	±Y	angular	0°	±Y°		
VACUUM AREA FOR 98432-X2XLF		FCI		title		VERTICAL SMT 6 POSITIONS		eng no	98432		rev	U	
www.fci.com		cat. no.		98432-XXX(LF)		Product - Customer Drw		sheet 1 of 2		PDS: Rev U		STATUS: Released	Printed: Feb 08, 2016

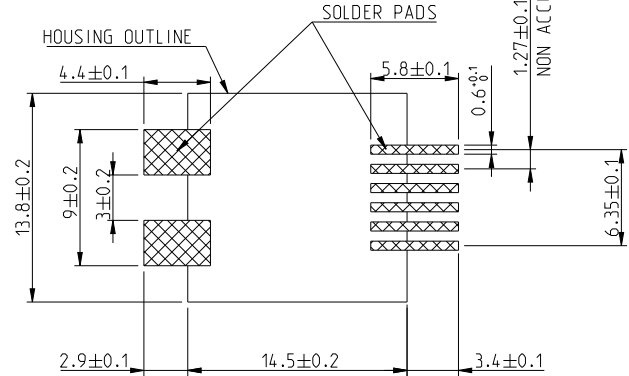
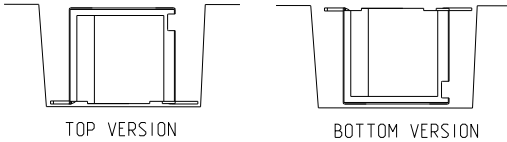
PRODUCT N°
98432-XXXLF

CONTACT PLATING OPTION
1= GXT 0.76 µm
3= 0.76 µm GOLD
5= 1.27 µm GOLD

PACKAGE OPTIONS	VERSION	PLASTIC COLOR
TAPE AND REEL PACKAGE 1= LOADED FACE UP	TOP	BLACK
TAPE AND REEL PACKAGE 2= LOADED FACE DOWN	BOTTOM	BLACK
TAPE AND REEL PACKAGE 3= LOADED FACE UP	TOP	GREY

TERMINAL LOADING OPTIONS
1 = FULLY LOADED 6 POSITIONS
2 = ONLY POS 2,3,4,5 LOADED
3 = ONLY POS 1,2,5,6 LOADED
4 = ONLY POS 3,4 LOADED

WHEN NEEDED, SUFFIX LETTER "LF" INDICATES THE PRODUCT IS ROHS COMPATIBLE SEE NOTE 7.



RECOMMENDED PCB FOOTPRINT

- NOTES:
- MATERIAL:
HOUSING: HIGH TEMP. PLASTIC. COLOR : SEE TABLE HERE ABOVE.
- GWFI IS 850°C AT 1mm AND 960°C AT 2mm THICKNESS OF THE PLATES.
- GWIT IS AT 725°C FOR 1 AND 2 mm THICKNESS OF THE PLATES.
TERMINAL PHOSPHOR BRONZE
 - PLATING
CONTACT AREA: OPTIONAL SEE TABLE
SOLDER TAIL: SnPb 90/10 2µm MIN
NO RAW EDGES EXCEPT SOLDER TAILS TIPS
 - AREA FOR VACUUM PICK AND PLACE VENTURY
 - PACKAGING SPECIFICATION SEE TA 858
 - DIMENSION MEASURED FROM "A" TO THE TOP OF PRODUCT
 - COPLANARITY SEE TA 861.
 - RoHS COMPATIBLE PRODUCT SPECIFICATIONS
 - PLATING:
- "LF" MEANS THE PRODUCT IS LEAD-FREE.
2µm MINIMUM MATTE TIN OVER 1.27µm MINIMUM NICKEL UNDERPLATE.
 - MANUFACTURING PROCESS COMPATIBILITY:
- THE HOUSING WILL WITHSTAND EXPOSURE TO 245°C PEAK TEMPERATURE FOR 30 SECONDS MAX IN A CONVECTION, INFRA-RED OR VAPOR PHASE OR REFLOW OVEN.
 - LABELLING:
- MEETS PACKAGING SPECS AS PER GS-14-920.
 - LEGAL STATEMENT: SEE GS-22-008

spec ref	-	dr	A Perrenin	20020073	projection	mm	size	A3	scale	5:1
tolerance std	±0.13 ±2*	eng	J Dallard	20160209		mm	ecn no	ELX-10041-1	rel level	Released
TOLERANCES UNLESS OTHERWISE SPECIFIED		chr	J Dallard	20160209						
		appr	Americ Study	20160208						
surface	linear	0.X	±Y		product family		MODULAR JACK		title VERTICAL SMT 6 POSITIONS eng no 98432 rev U	
	0.XX	±Y	cat. no.		98432-XXX(LF)		Product - Customer Drw			
	0.XXX	±Y	sheet 2 of 2							
ISO 1302	angular	0°	±Y°	www.fci.com	PDS: Rev U		STATUS: Released		Printed: Feb 08, 2016	

Copyright FCI.