

Excellent Integrated System Limited

Stocking Distributor

Click to view price, real time Inventory, Delivery & Lifecycle Information:

[CTS Electronic Components](#)

[CER0074B](#)

For any questions, you can email us directly:

sales@integrated-circuit.com



CER0074B

1472 MHz DAB BPF

Rev 0 – Origin Date: March 7, 2006 – Revision Date: March 7, 2006

Features

- Small Size
- Low Ripple
- Low Loss

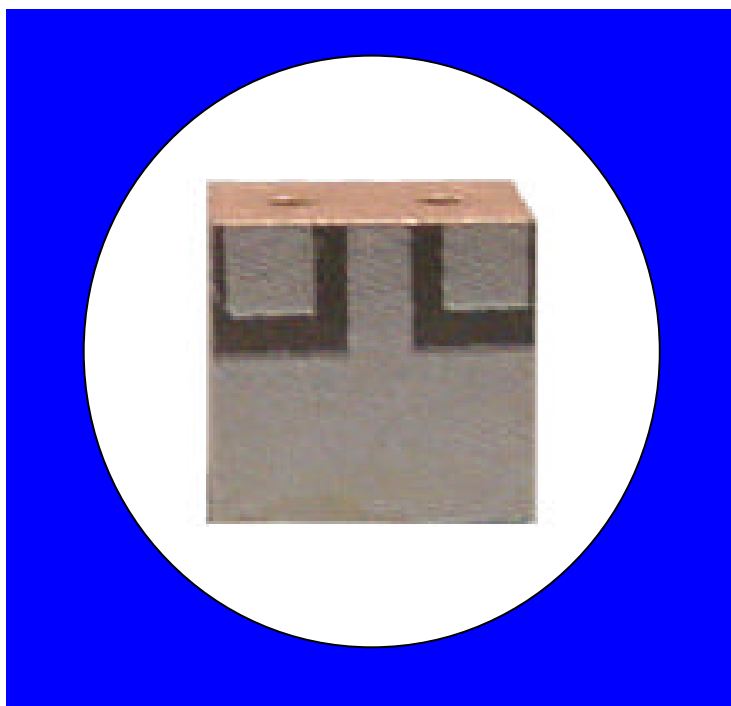
Description

Surface mount, silver (Ag) coated ceramic filter. Developed for use in Digital Audio Broadcast Applications.

Weight: 0.4 grams typical

Material: Filter is composed of a ceramic block plated with Ag.

Filter complies with RoHS standards.



Electrical Specifications

Parameter	Frequency MHz	Typical @ 25°C	Specification @ 25°C	Spec over -40°C to +85°C
TX to Antenna Response				
Passband Iloss	1452 - 1492	0.5	-0.8	-1.0
Passband Ripple	1452 - 1492	0.2	0.4	0.4
Passband Return Loss @ TX	1452 - 1492	-15.0	-10.0	-10.0
Passband Return Loss @ Ant	1452 - 1492	-15.0	-10.0	-10.0
Attenuation	880 - 960	-32.5	-30.0	-30.0
	1800 - 2180	-26.0	-22.0	-22.0
Power into any port		1 Watt max		

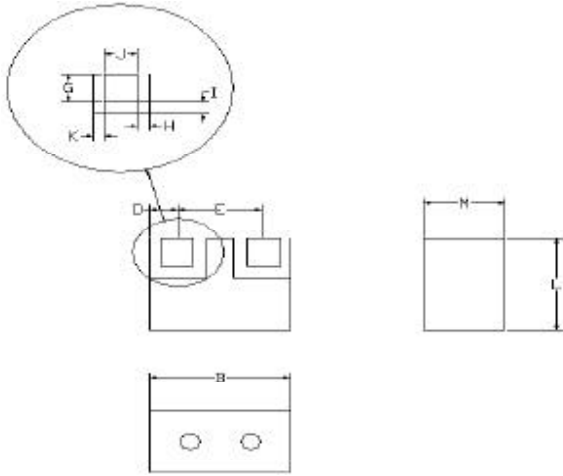
Note: Supplier shall test each filter to the critical electrical specifications of the above table. Any subsequent audits may deviate from in value due to measurement repeatability among different test systems. Such deviations shall not exceed the following limits:

Specification Allowance	
Insertion Loss	0.1 dB
Return Loss	1.0 dB
Stopbands	1.0 dB

*This product is covered by one or more of the following U.S. and foreign patents including: US 4,692,726;US 4,742,562; US 4,800,348;US 4,829,274;US 5,146,193;EP 0573597;DE 0573597;FR 0573597;P 508149/92;KR 142171;US 5,162,760;US 5,218,329;US 5,250,916;US 5,327,109;US 5,488,335;CA 2114029;FR 9306297;GB 2273393;JP 3205337;KR 115113;CN 93106228.4;US 5,512,866;EP 0706719;DE 0706719;FR 0706719;GB 0706719;CN 95190359.4;US 5,602,518;US 5,721,520;US 5,745,018;EP 0910875;DE 0910875;DK 0910875;FR 0910875;GB 0910875;IE 0910875;JP 505182/98;KR 10-323013;US 5,994,978;US 6,462,629;CN 00810420.4;US 6,559,735;US 6,650,202;US 6,834,429. Other US and foreign patents pending.

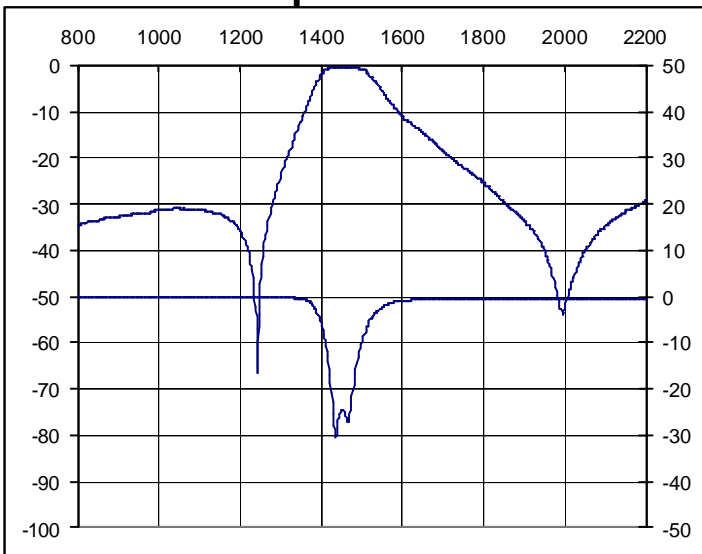
©CTS Corporation 2006 reserves all copyrights in the layout, design and configuration of the patterns on this product.*

Mechanical Drawing

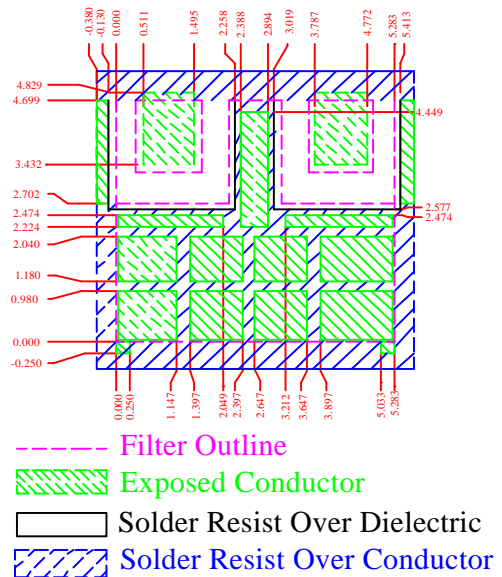


Dim	Nominal (mm)	Tolerance (mm) +/- or max/min
A		
B	5.58	Max
C		
D	1.03	0.25
E	3.28	0.25
F		
G	1.4	0.13
H	0.51	0.13
I	0.6	0.13
J	1.24	0.13
K	0.38	0.25
L	4.99	Max
M	3.2	Max

Electrical response

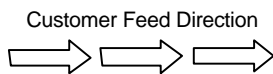
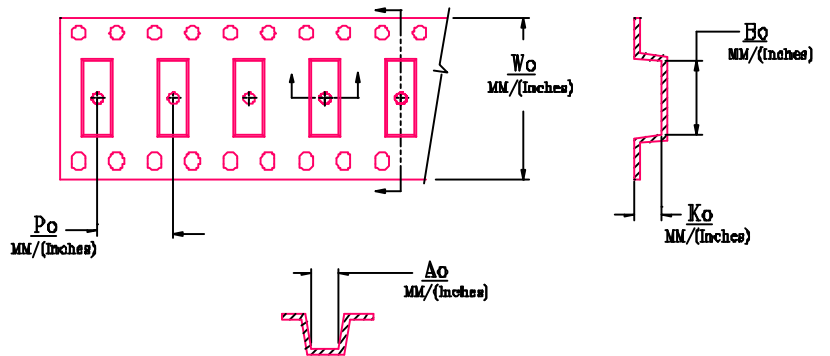


PCB Layout



Packaging and Marking

DIMENSION	UNITS	SPECIFICATION
REEL DIAMETER	mm	12
REEL WEIGHT	kg	1.2
REEL QUANTITY	ea.	1000



MODEL NO.	W_0	A_0	B_0	K_0	P_0
CER0074	12.0/(d.472)	5.36/(d.211)	5.77/(d.227)	3.73/(d.147)	8.0/(d.315)