

## Excellent Integrated System Limited

Stocking Distributor

Click to view price, real time Inventory, Delivery & Lifecycle Information:

[CTS Electronic Components](#)

[CER0803A](#)

For any questions, you can email us directly:

[sales@integrated-circuit.com](mailto:sales@integrated-circuit.com)

# CER0803A

2132.5 MHz Monoblock LR Series BPF

Revision B – Origin Date: June 6, 2010 – Revision Date: July 11, 2011

## Features

- Low Ripple
- High Rejection
- Low Loss

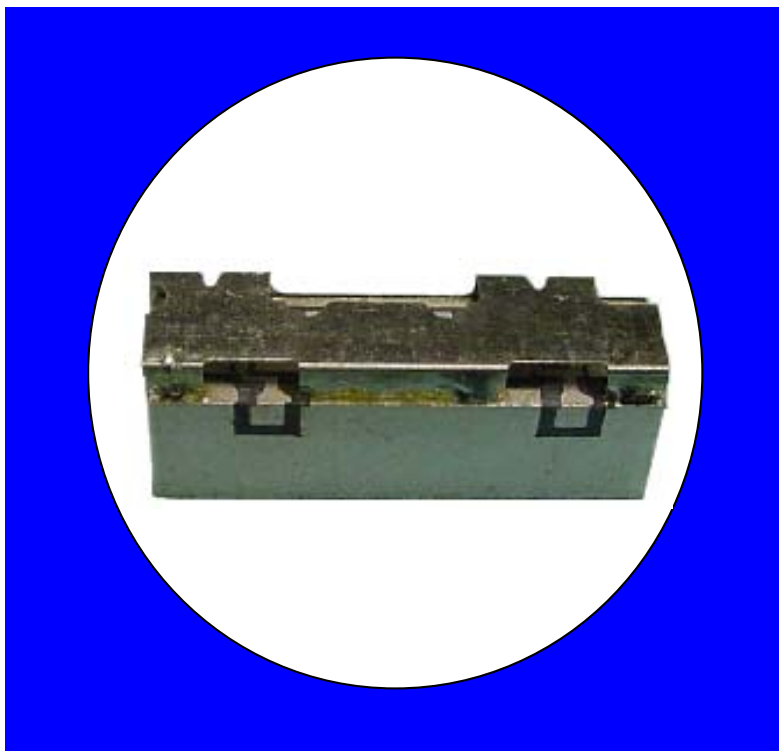
## Description

Surface mount, silver (Ag) coated ceramic filter. Developed for use in AWS infrastructure applications, CTS Monoblock LR Series Filters are designed to minimize ripple and maximize rejection.

Weight: 4.7 grams typical

Material: Filter is composed of a ceramic block coated with Ag and a shield made of nickel silver plated steel.

Filter complies with RoHS standards.



## Electrical Specifications

Parameter	Frequency (MHz)	Typical @ 25°C	Specification @ 25C	Spec. over -40°C to +85°C
Passband Insertion Loss	2110 – 2155	-1.20	-1.80	-2.00
Passband Ripple	2110 – 2155	0.40	0.60	0.80
Passband Return Loss @ Port 1	2110 – 2155	-16.00	-14.00	-14.00
Passband Return Loss @ Port 2	2110 – 2155	-16.00	-14.00	-14.00
Attenuation:	0.1 - 1000	-50.00	-40.00	-40.00
	1000 - 1710	-45.00	-40.00	-40.00
	1710 - 1755	-47.00	-45.00	-45.00
	1755 - 1910	-46.00	-40.00	-40.00
	1910 - 1995	-44.00	-40.00	-40.00
	2400 - 2500	-28.00	-25.00	-25.00
	2500 - 3000	-35.00	-30.00	-30.00
Power into any port		3 Watt max.		

Note: Supplier shall test each filter to the critical electrical specifications of the above table. Any subsequent audits may deviate from in value due to measurement repeatability among different test systems. Such deviations shall not exceed the following limits:

Specification Allowance

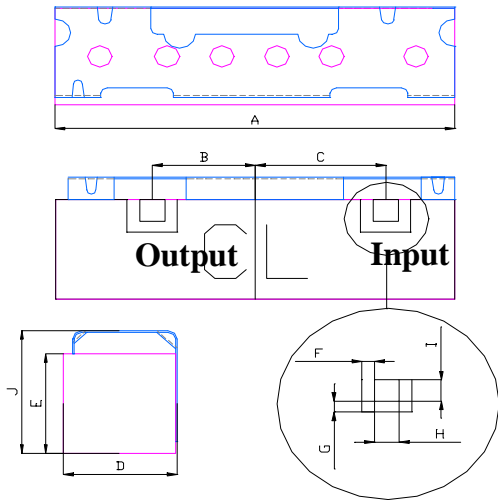
Insertion Loss	0.1 dB
Return Loss	1.0 dB
Stopbands	1.0 dB

\*This product is covered by one or more of the following U.S. and foreign patents including: US 4,692,726;US 4,742,562; US 4,800,348;US 4,829,274;US 5,146,193;EP 0573597;DE 0573597;FR 0573597;JP 508149/92;KR 142171;US 5,162,760;US 5,218,329;US 5,250,916;US 5,327,109;US 5,488,335;CA 2114029;FR 9306297;GB 2273393;JP 3205337;KR 115113;CN 93106228.4;US 5,512,866;EP 0706719;DE 0706719;FR 0706719;GB 0706719;CN 95190359.4;US 5,602,518;US 5,721,520;US 5,745,018;EP 0910875;DE 0910875;DK 0910875;FR 0910875;GB 0910875;IE 0910875;JP 505182/98;KR 10-323013;US 5,994,978;US 6,462,629;CN 00810420.4;US 6,559,735;US 6,650,202;US 6,834,429.Other US and foreign patents pending.

\*CTS Corporation 2006 reserves all copyrights in the layout, design and configuration of the patterns on this product.\*

## Mechanical Drawing

Revision B – Origin Date: June 6, 2010 – Revision Date: July 11, 2011

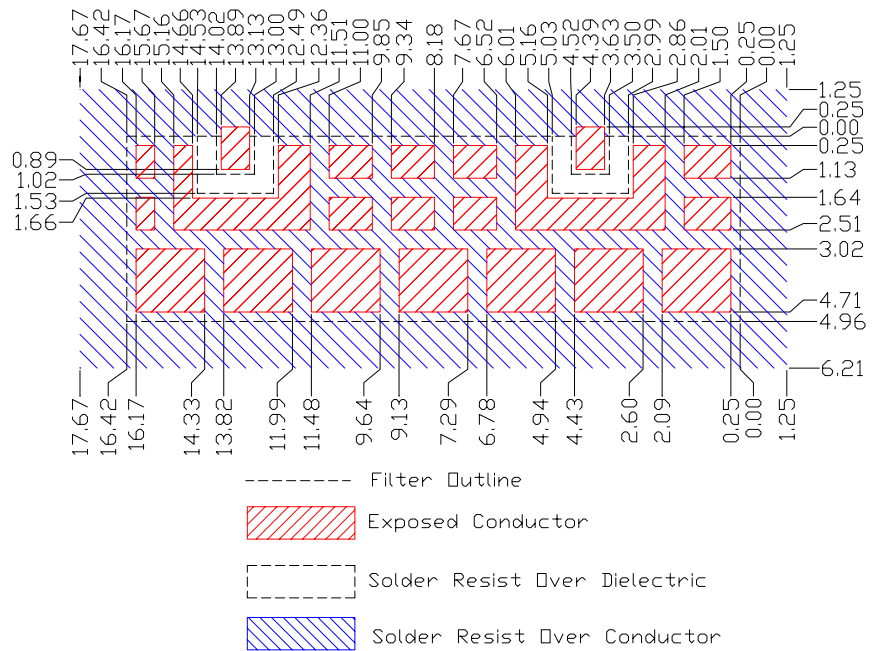


Dim	Nominal (mm)	Tolerance (mm) +/- or max
A	16.42	max
B	4.2	0.13
C	5.3	0.13
D	4.85	max
E	4.9	max
F	0.51	0.13
G	0.51	0.13
H	1.02	0.13
I	1.02	0.13
J	6.03	max

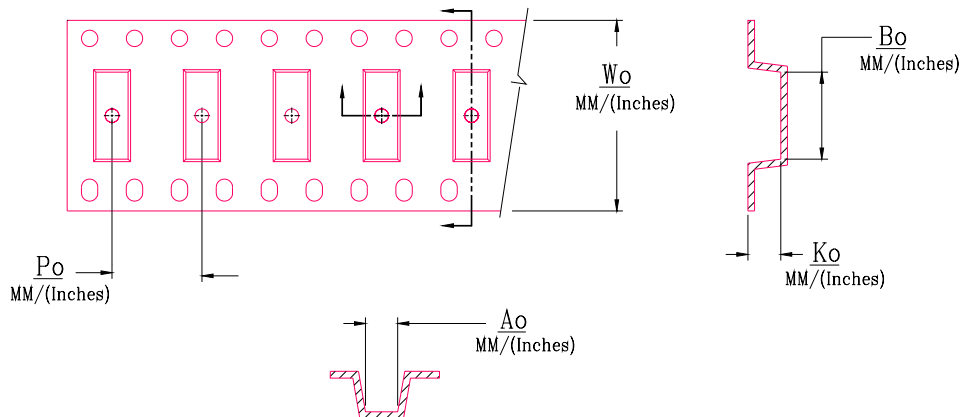
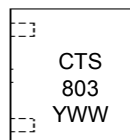
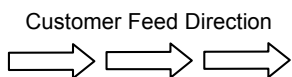
## Electrical response



## PCB Layout



## Packaging and Marking



DIMENSION	UNITS	SPECIFICATION
REEL DIAMETER	mm	330
REEL WEIGHT	kg	3.1
REEL QUANTITY	ea.	500

Wo	Ao	Bo	Ko	Po
Inches/mm	Inches/mm	Inches/mm	Inches/mm	Inches/mm
0.945" / 24.0	0.248" / 6.3	0.657" / 16.7	0.201" / 5.1	0.472" / 12.0