

Excellent Integrated System Limited

Stocking Distributor

Click to view price, real time Inventory, Delivery & Lifecycle Information:

[CTS Electronic Components](#)

[KFF6433A](#)

For any questions, you can email us directly:

sales@integrated-circuit.com



KFF6433A

1054 MHz CATV BPF

Rev 0 – Origin Date: July 11, 2005 – Revision Date: July 11, 2005

Features

- Narrow Bandwidth
- Excellent Rejection
- Excellent Return Loss

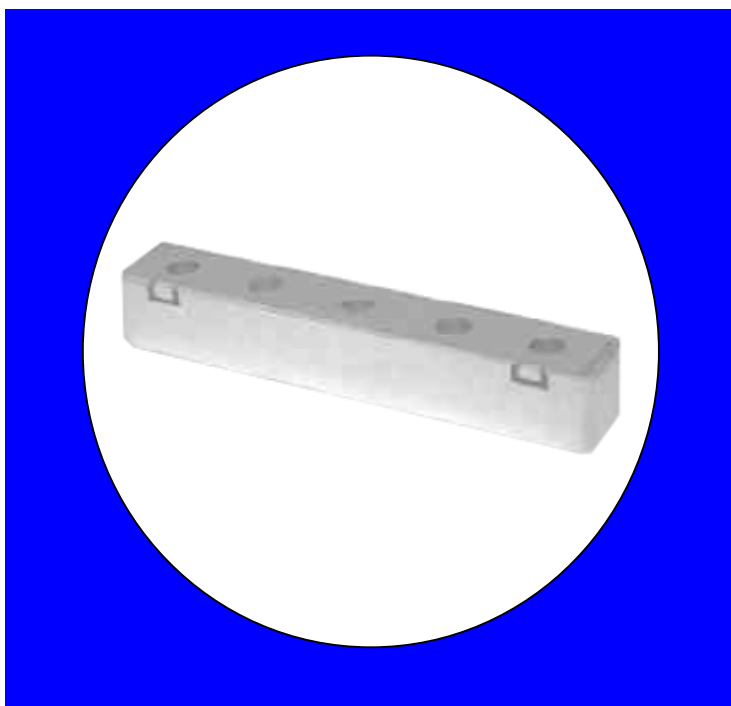
Description

Surface mount, silver (Ag) coated ceramic filter. Developed for use in CATV applications.

Weight: 16.0 grams typical

Material: Filter is composed of a ceramic block plated with Ag.

Filter complies with RoHS standards.



Electrical Specifications

Parameter	Frequency (MHz)	Typical @ 25°C	Spec. @ 25°C
Passband Insertion Loss	1052-1056	4.03 dB	4.03 dB max
Passband Return Loss	1052-1056	15.6 dB	15.6 dB min
Attenuation	1029	60.2 dB	60.2 dB min
Attenuation	1044	24.2 dB	24.2 dB min
Attenuation	1064	24.3	24.3 dB min
Attenuation	1079	70.2	70.2 dB min
Power into any port			1 Watt max

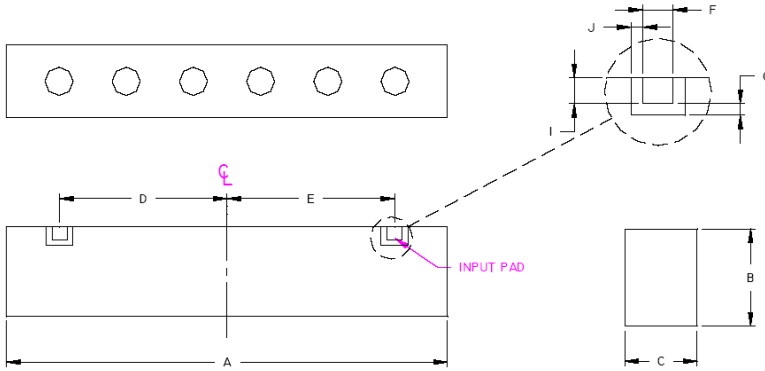
Note: Supplier shall test each filter to the critical electrical specifications of the above table. Any subsequent audits may deviate from in value due to measurement repeatability among different test systems. Such deviations shall not exceed the following limits:

Specification Allowance	
Insertion Loss	0.1 dB
Return Loss	1.0 dB
Stopbands	1.0 dB

*This product is covered by one or more of the following U.S. and foreign patents including: US 4,692,726;US 4,742,562; US 4,800,348;US 4,829,274;US 5,146,193;EP 0573597;DE 0573597;FR 0573597;JP 508149/92;KR 142171;US 5,162,760;US 5,218,329;US 5,250,916;US 5,327,109;US 5,488,335;CA 2114029;FR 9306297;GB 2273393;JP 3205337;KR 115113;CN 93106228.4;US 5,512,866;EP 0706719;DE 0706719;FR 0706719;GB 0706719;CN 95190359.4;US 5,602,518;US 5,721,520;US 5,745,018;EP 0910875;DE 0910875;DK 0910875;FR 0910875;GB 0910875;IE 0910875;JP 505182/98;KR 10-323013;US 5,994,978;US 6,462,629;CN 00810420.4;US 6,559,735;US 6,650,202;US 6,834,429.Other US and foreign patents pending.

CTS Corporation 2006 reserves all copyrights in the layout, design and configuration of the patterns on this product.

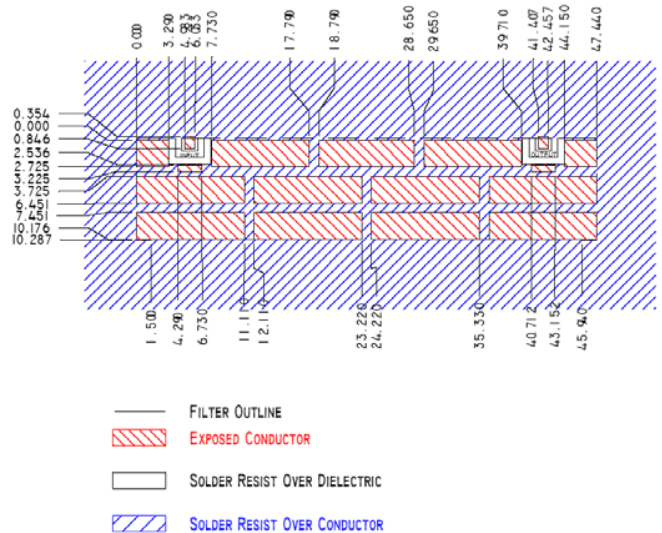
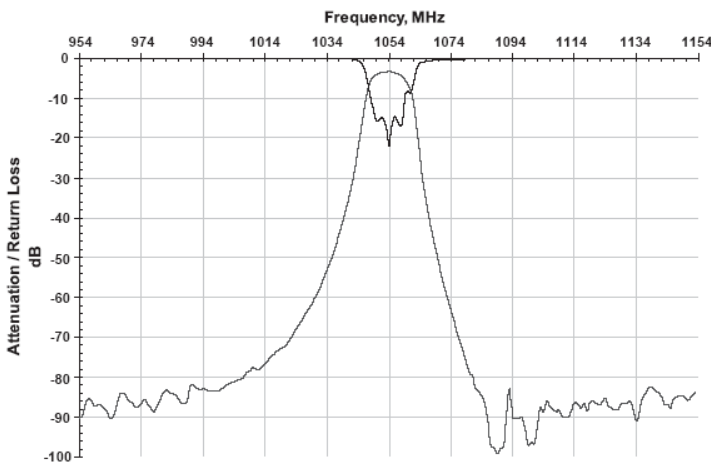
Mechanical Drawing



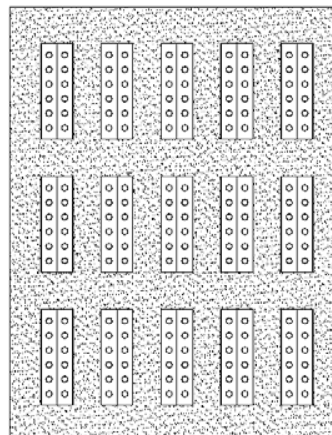
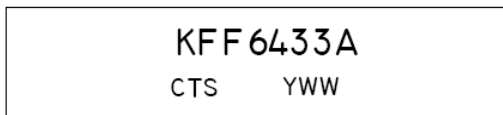
Dim	Nominal (mm)	Tolerance (mm) +/- or max
A	47.921	max
B	10.541	max
C	7.850	max
D	18.212	0.127
E	18.212	0.127
F	1.651	0.127
G	0.635	0.127
I	1.397	0.127
J	0.635	0.127

Electrical response

PCB Layout



Packaging and Marking



7 15 Slot Gray Foam Trays
(210 max per box)