

Excellent Integrated System Limited

Stocking Distributor

Click to view price, real time Inventory, Delivery & Lifecycle Information:

[CTS Electronic Components](#)

[KFF6444A](#)

For any questions, you can email us directly:

sales@integrated-circuit.com

Features

- Narrow Bandwidth
- Excellent Rejection
- Good Power Handling

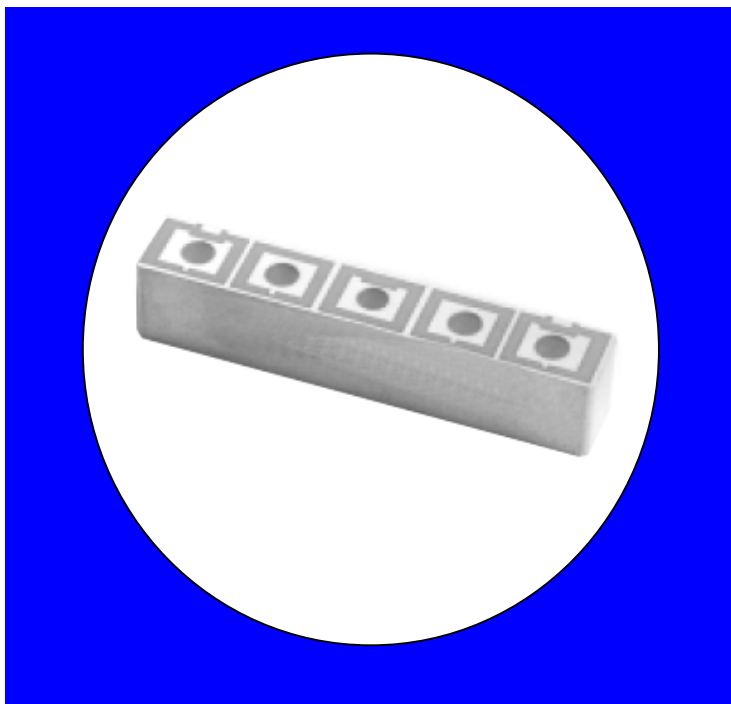
Description

Surface mount, silver (Ag) coated ceramic filter. Developed for use in TCAS applications

Weight: 15.1 grams typical

Material: Filter is composed of a ceramic block plated with Ag.

Filter complies with RoHS standards.



Electrical Specifications

Parameter	Frequency (MHz)	Typical @ 25°C	Spec. @ 25°C
Passband Insertion Loss	1085-1095	4.2 dB	4.5 dB max
Passband Return Loss	1085-1095	10.5 dB	10.0 dB min
Attenuation	1065	57.2 dB	55.0 dB min
Attenuation	1113	67.3 dB	55.0 dB min
Power Rating			5W
Impedance			50 Ω

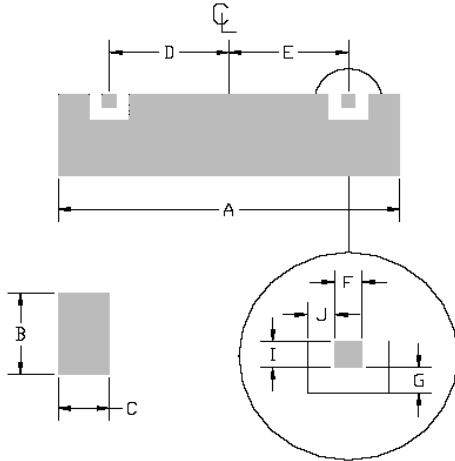
Note: Supplier shall test each filter to the critical electrical specifications of the above table. Any subsequent audits may deviate from in value due to measurement repeatability among different test systems. Such deviations shall not exceed the following limits:

Specification Allowance	
Insertion Loss	0.1 dB
Return Loss	1.0 dB
Stopbands	1.0 dB

*This product is covered by one or more of the following U.S. and foreign patents including: US 4,692,726;US 4,742,562; US 4,800,348;US 4,829,274;US 5,146,193;EP 0573597;DE 0573597;FR 0573597;JP 508149/92;KR 142171;US 5,162,760;US 5,218,329;US 5,250,916;US 5,327,109;US 5,488,335;CA 2114029;FR 9306297;GB 2273393;JP 3205337;KR 115113;CN 93106228.4;US 5,512,866;EP 0706719;DE 0706719;FR 0706719;GB 0706719;CN 95190359.4;US 5,602,518;US 5,721,520;US 5,745,018;EP 0910875;DE 0910875;DK 0910875;FR 0910875;GB 0910875;JE 0910875;JP 505182/98;KR 10-323013;US 5,994,978;US 6,462,629;CN 00810420.4;US 6,559,735;US 6,650,202;US 6,834,429. Other US and foreign patents pending.

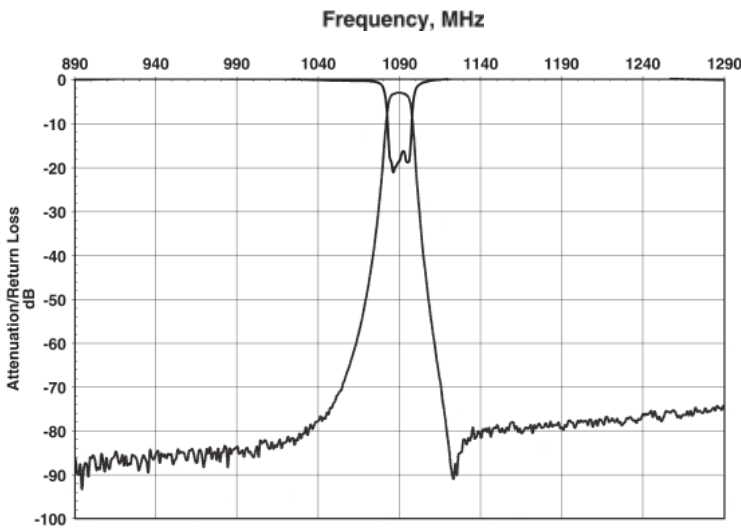
CTS Corporation 2006 reserves all copyrights in the layout, design and configuration of the patterns on this product.

Mechanical Drawing

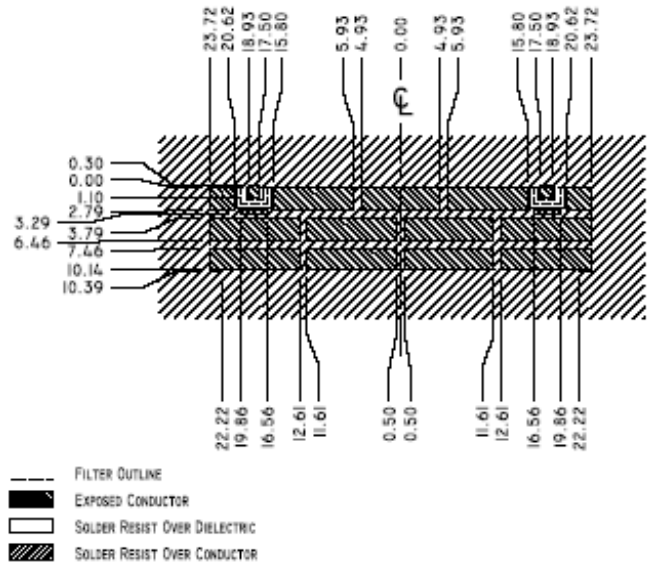


Dim	Nominal (mm)	Tolerance (mm) +/- or max
A	47.921	max
B	10.287	max
C	7.850	max
D	18.212	0.127
E	18.212	0.127
F	2.032	0.127
G	0.635	0.127
I	1.397	0.127
J	0.635	0.127

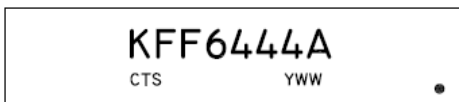
Electrical response



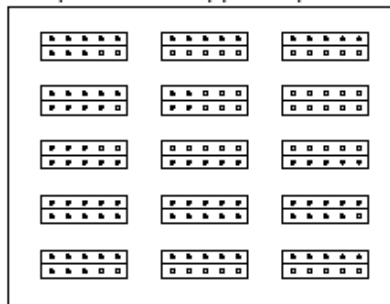
PCB Layout



Packaging and Marking



This product is shipped in pre-formed foam trays.



7 15 Slot Foam Trays
(210 per box max)