

## Excellent Integrated System Limited

Stocking Distributor

Click to view price, real time Inventory, Delivery & Lifecycle Information:

[CTS Electronic Components](#)

[KFF6686A](#)

For any questions, you can email us directly:

[sales@integrated-circuit.com](mailto:sales@integrated-circuit.com)

### Features

- Low Ripple
- Low Loss
- Excellent Isolation

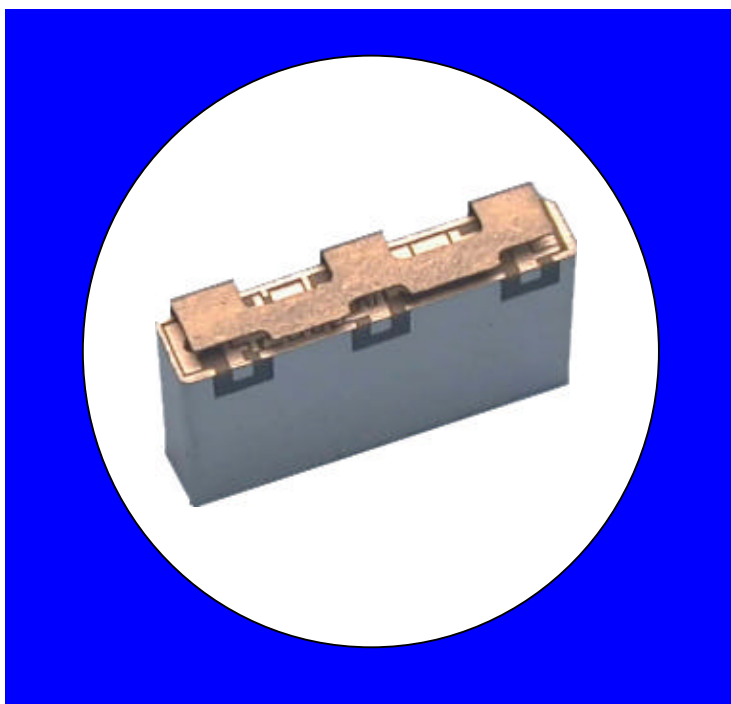
### Description

Surface mount, silver (Ag) coated ceramic duplexer. Developed for use in 800 MHz infrastructure and subscriber applications.

Weight: 2.37 grams typical

Material: Filter is composed of a ceramic block plated with Ag and a shield made of nickel silver plated steel.

Filter complies with RoHS standards.



### Electrical Specifications

Parameter	Frequency (MHz)	Typical @ 25°C	Spec. @ 25°C	Spec. over -40°C to +85°C
<b>Antenna to TX Response</b>				
Passband Insertion Loss	824-849	2.4 dB	2.8 dB max	3.0 dB max
Passband Return Loss @ TX	824-849	15.0 dB	12.0 dB min	10.0 dB min
Passband Return Loss @ ANT	824-849	15.0 dB	12.0 dB min	10.0 dB min
Passband Ripple	824-849	1.2 dB	1.6 dB max	1.7 dB max
Attenuation:	869-894	43.0 dB	41. dB min	40.0 dB min
<b>Antenna to RX Response</b>				
Passband Insertion Loss	869-894	3.0 dB	3.6 dB max	3.9 dB max
Passband Return Loss @ RX	869-894	15.0 dB	12.0 dB min	10.0 dB min
Passband Return Loss @ ANT	869-894	13.0 dB	12.0 dB min	10.0 dB min
Passband Ripple	869-894	1.6 dB	2.4 dB max	2.5 dB max
Attenuation:	824-849	60.0 dB	56.0 dB min	55.0 dB min
<b>TX to RX Response</b>				
Rejection @ TX band	824-849	62.0 dB	57.0 dB min	56.0 dB min
Rejection @ RX band	869-894	44.0 dB	42.0 dB min	41.0 dB min
Power into any port			3.0 Watt max	

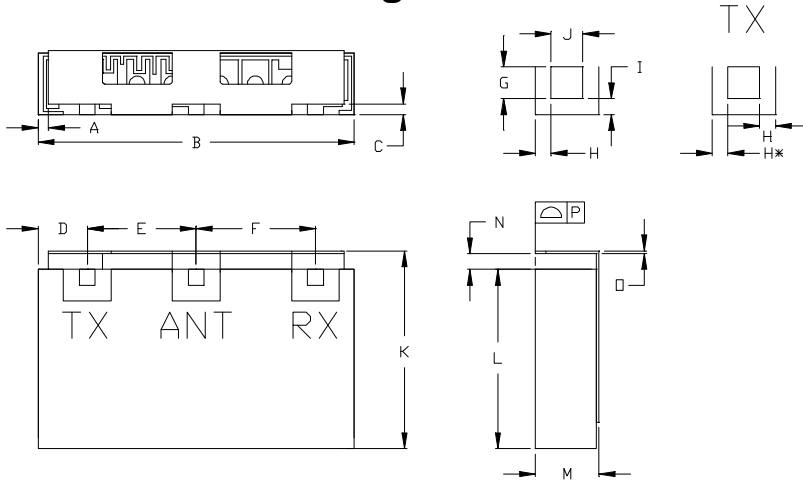
Note: Supplier shall test each filter to the critical electrical specifications of the above table. Any subsequent audits may deviate from in value due to measurement repeatability among different test systems. Such deviations shall not exceed the following limits:

Specification Allowance	
Insertion Loss	0.1 dB
Return Loss	1.0 dB
Stopbands	1.0 dB

\*This product is covered by one or more of the following U.S. and foreign patents including: US 4,692,726;US 4,742,562; US 4,800,348;US 4,829,274;US 5,146,193;EP 0573597;DE 0573597;FR 0573597;JP 508149/92;KR 142171;US 5,162,760;US 5,218,329;US 5,250,916;US 5,327,109;US 5,488,335;CA 2114029;FR 9306297;GB 2273393;JP 3205337;KR 115113;CN 93106228.4;US 5,512,866;EP 0706719;DE 0706719;FR 0706719;GB 0706719;CN 95190359.4;US 5,602,518;US 5,721,520;US 5,745,018;EP 0910875;DE 0910875;DK 0910875;FR 0910875;GB 0910875;IE 0910875;JP 505182/98;KR 10-323013;US 5,994,978;US 6,462,629;CN 00810420.4;US 6,559,735;US 6,650,202;US 6,834,429. Other US and foreign patents pending.

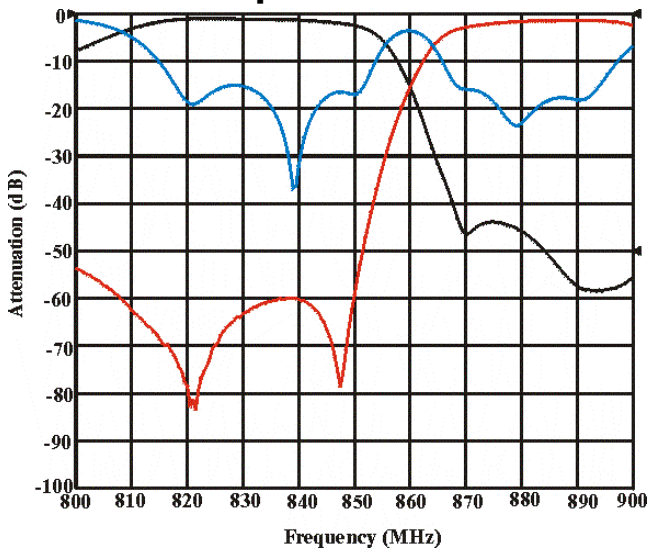
\*CTS Corporation 2006 reserves all copyrights in the layout, design and configuration of the patterns on this product.\*

**Mechanical Drawing**

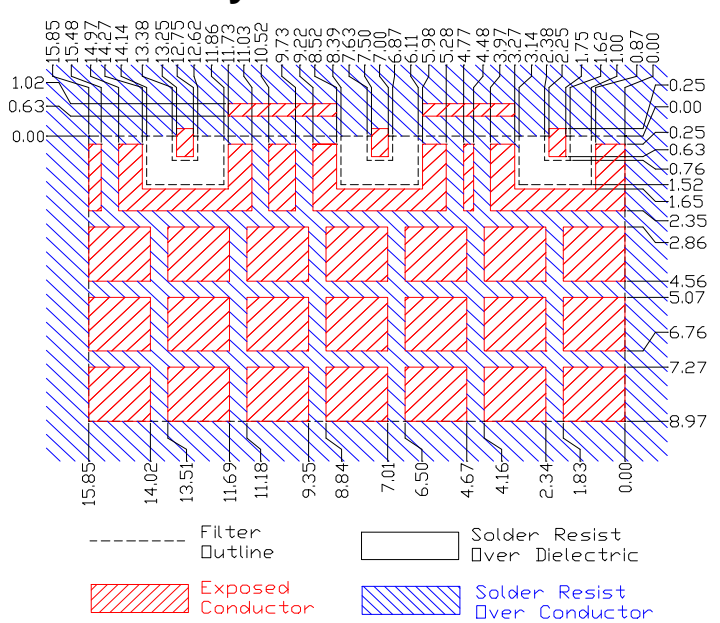


Dim	Nominal (mm)	Tolerance (mm) +/- or max
A	0.76	0.25
B	15.85	max
C	0.51	0.13
D	2	0.25
E	5.25	0.13
F	5.75	0.13
G	0.76	0.13
H	0.76	0.13
H*	0.62	0.13
I	0.76	0.13
J	0.76	0.13
K	10	max
L	8.97	max
M	3.4	max
N	0.76	0.13
O	0.13	0.03
P		0.1

**Electrical response**



**PCB Layout**



**Packaging and Marking**

DIMENSION	UNITS	SPECIFICATION
REEL DIAMETER	mm	330
REEL WEIGHT	kg	2
REEL QUANTITY	ea.	500

