

Excellent Integrated System Limited

Stocking Distributor

Click to view price, real time Inventory, Delivery & Lifecycle Information:

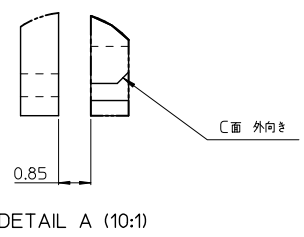
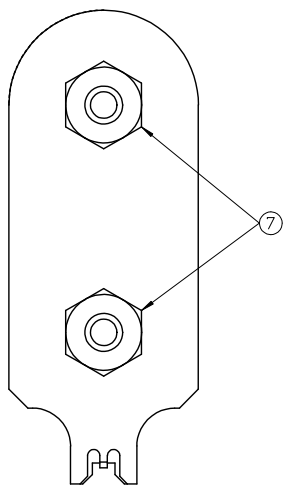
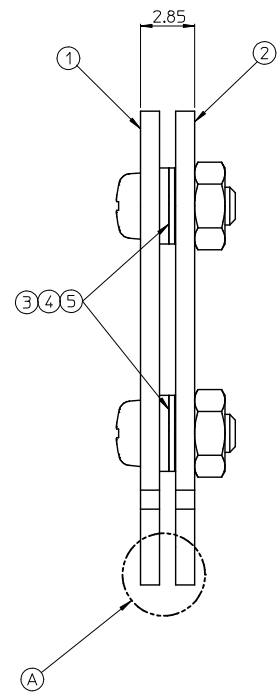
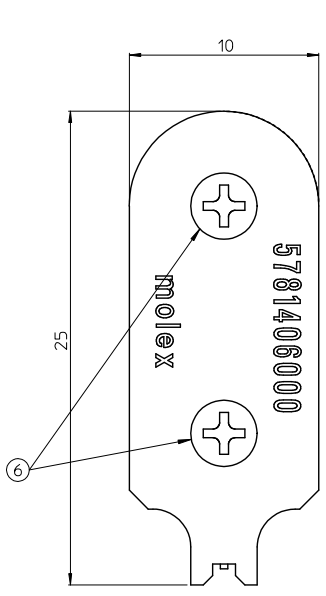
[Molex Connector Corporation](#)
[5050731100](#)

For any questions, you can email us directly:

sales@integrated-circuit.com

10 9 8 7 6 5 4 3 2 1

PARTS LIST			
No.	PART No.	QTY	DESCRIPTION
1	5781401601	1	GUIDE A
2	5781401602	1	GUIDE B
3	5781400601	2	SHIM CIMRS4-2-0.05 (ミスミ)
4	5781400602	2	SHIM CIMRS4-2-0.3 (ミスミ)
5	5781400603	2	SHIM CIMRS4-2-0.5 (ミスミ)
6	5781400604	2	M2 L=5 ナベネジ BKJ2-5 (ミスミ)
7	5781400605	2	M2 ナット LBNR2 (ミスミ)
8			
9			
10			



製作ロット数 : 10個

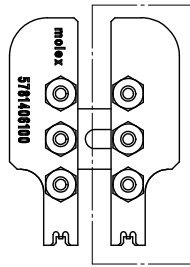
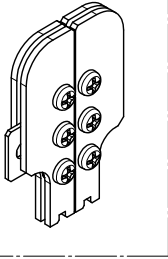
RELEASED
JT2014-0033
REV. A
DRAWN BY: MOOSAWA
CHK BY: MOOSAWA
APPR BY: KUMEMOTO
REL. DATE: 2014/05/21

※梱包は、個別梱包の事

GENERAL TOLERANCES (UNLESS SPECIFIED)		QTY:	
ANGULAR TOLERANCE : 1°		MATERIAL:	
DESIGNED IN [METRIC] UNITS		FINISH:	
TOL'S	MM	INCH	
4 PLACES	±	±	
3 PLACES	±0.005	±	
2 PLACES	±0.05	±	
1 PLACE	±0.1	±	
DRAWN BY & DATE MOOSAWA 2014/05/12		HEAT TREAT	HR:
CHECKED BY & DATE MOOSAWA		REVISE ON CAD ONLY	
APPROVED BY & DATE KUMEMOTO 2014/05/21		SCALE	5:1
THIRD ANGLE PROJECTION		FILE TYPE	SD_DRAWING
		MATERIAL NO.	
		DESIGN FILE NO.	5781406000.jm
		SERIES NO.	
		DOCUMENT NO.	5781406000
		SEC. SHE. NO.	1 of 1

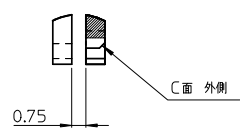
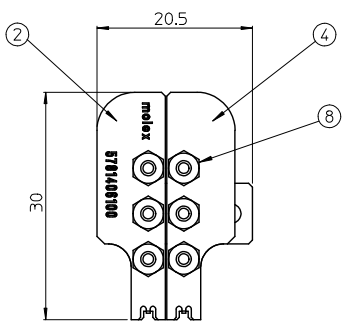
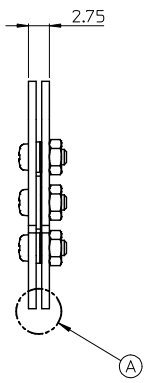
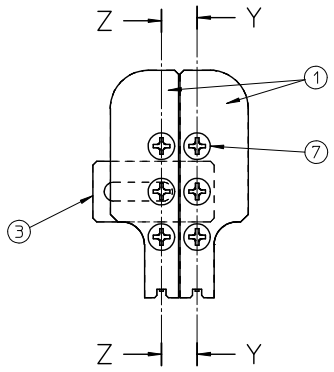
10 9 8 7 6 5 4 3 2 1

10 9 8 7 6 5 4 3 2 1



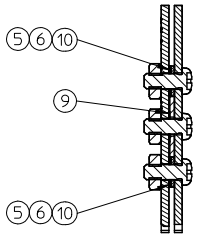
※スムーズに動く事

PARTS LIST			
No.	PART No.	QTY	DESCRIPTION
1	5781401611	2	GUIDE A
2	5781401612	1	GUIDE B
3	5781401613	1	GUIDE PLATE
4	5781401614	1	GUIDE C
5	5781400601	4	SHIM CIMRS4-2-0.05 (ミスミ)
6	5781400603	4	SHIM CIMRS4-2-0.5 (ミスミ)
7	5781400604	6	M2 L=5 ナベネジ BKJ2-5 (ミスミ)
8	5781400605	6	M2 ナット LBNR2 (ミスミ)
9	5781400611	2	SHIM CIMRS4-2-0.1 (ミスミ)
10	5781400612	4	SHIM CIMRS4-2-0.2 (ミスミ)

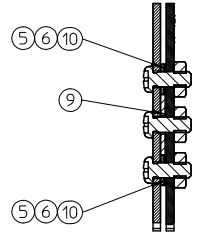


DETAIL A (5:1)

製作ロット数: 10set



SECTION Z-Z



SECTION Y-Y

※梱包は個別梱包の事

RELEASED
JT2014-0033
A
DRAWN BY: MOOSAWA
CHK BY: MOOSAWA
APPR BY: KUMEMOTO
REL. DATE: 2014/05/21

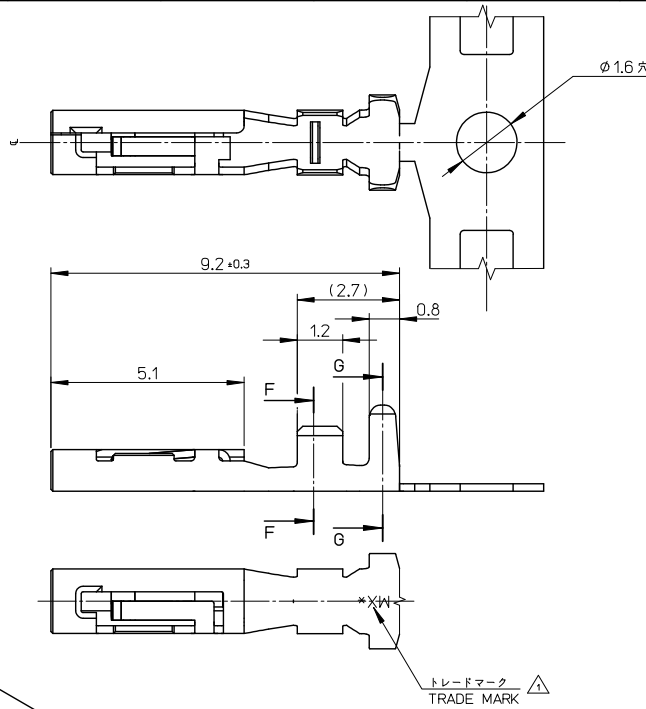


THIS DRAWING CONTAINS INFORMATION THAT IS PROPRIETARY TO MOLEX INCORPORATED AND SHOULD NOT BE USED WITHOUT WRITTEN PERMISSION

GENERAL TOLERANCES (UNLESS SPECIFIED)		QTY:	REVISIONS	
ANGULAR TOLERANCE : 1°		MATERIAL:	DATE: 2014/05/21	
DESIGNED IN [METRIC] UNITS		HEAT TREAT:	SCALE: 2:1	
TOL'S	MM	INCH	REVISE ON CAD ONLY	
4 PLACES	±	±	TITLE: LED EXTRACTION JIG B-B	
3 PLACES	±0.005	±	DRAWN BY & DATE: MOOSAWA 2014/05/21	
2 PLACES	±0.05	±	CHECKED BY & DATE: MOOSAWA	
1 PLACE	±0.1	±	APPROVED BY & DATE: KUMEMOTO 2014/05/21	
THIRD ANGLE PROJECTION		FILE TYPE: SDI_DRAWING	MATERIAL NO.:	DESIGN FILE NO.:
		DRW SIZE: A3	5781406100	5781406100
		TSD. ID.:	DOCUMENT NO.:	5781406100
				1 of 1

9 8 7 6 5 4 3 2 1

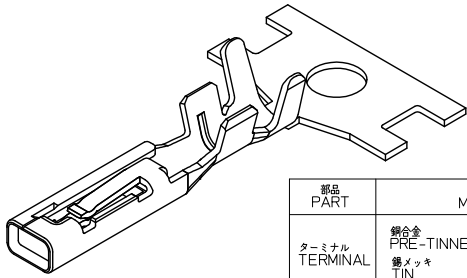
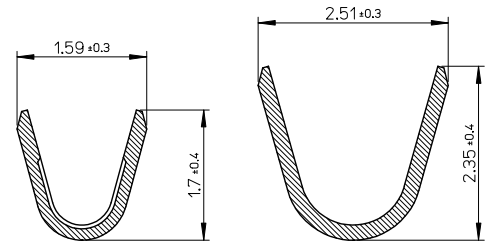
10 9 8 7 6 5 4 3 2 1



NOTES:
 △トレードマーク: MXプラス1文字の製造工場を示すアルファベットにて表示。
 但し、"J"はJAPANを示す。(例 MXJ)
 FORMED BY MX AND 1 MORE LETTER OF ALPHABET
 WHICH MEAN THE MANUFACTORY.
 BUT "J" MEANS JAPAN. (TO TRADE MARK)(e.g. MXJ)

2. 嵌合相手: 5050710101
 MATE WITH: 5050710101

3. ELVおよびRoHS適合品
 ELV AND RoHS COMPLIANT.



⑤ 5050730400	バラ状 LOOSE	505073
5050731100	連鎖状 CHAIN	
オーダー番号 ORDER No.	端子形状 FORM	CONNECTOR SERIES No.

部品 PART	材質 ② MATERIAL
ターミナル TERMINAL	銅合金 PRE-TINNED COPPER ALLOY 錫メッキ TIN ニッケルメッキ(下地) NICKEL UNDER PLATING
通用電線範囲 WIRE RANGE	絶縁被覆外径 INSURATION RANGE
AWG: #22~#26 MM ² : 0.126~0.34	φ0.9~φ1.7

GENERAL TOLERANCES (UNLESS SPECIFIED)			
0.25 UNDER			±0.03
0.25 OVER	0.5 UNDER		±0.05
0.5 OVER	1.0 UNDER		±0.1
1.0 OVER	10 UNDER		±0.2
10 OVER	30 UNDER		±0.25
30 OVER			±0.3
ANGULAR			±1°

DIMENSION STYLE MM ONLY	
DRAWN BY	DATE
HTONEGAWA	2013/10/31
CHECKED BY	DATE
TNIITSU	2013/10/31
APPROVED BY	DATE
MYAGI	2014/01/09
MATERIAL NO.	
SEE CHART	

SCALE	DESIGN UNITS	THIRD ANGLE PROJECTION
10:1	METRIC	◎ □
TITLE		
1CKT. LED CONN. W/B RECEPTACLE H=1.2		
DOCUMENT NO.		
SD-505073-001		
SHEET NO.		
1 OF 1		

9 8 7 6 5 4 3 2 1