

## Excellent Integrated System Limited

Stocking Distributor

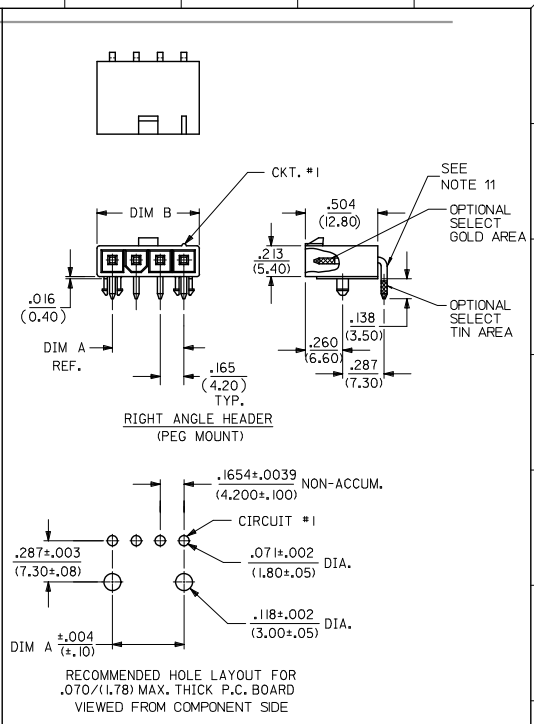
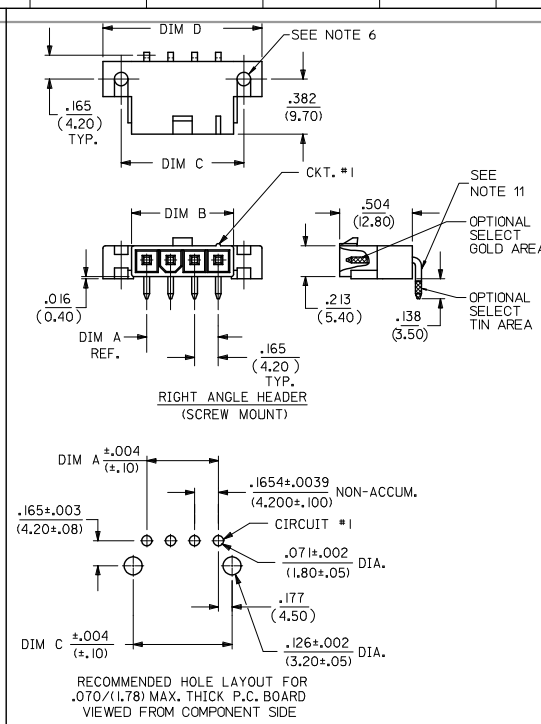
Click to view price, real time Inventory, Delivery & Lifecycle Information:

[Molex Connector Corporation](#)  
[1726480104](#)

For any questions, you can email us directly:

[sales@integrated-circuit.com](mailto:sales@integrated-circuit.com)

CKT SIZE	DIM A	DIM B	DIM C	DIM D
2	.165 (4.20)	.378 (9.60)	.520 (13.20)	.772 (19.60)
4	.496 (12.60)	.709 (18.00)	.850 (21.60)	1.102 (28.00)
5	.661 (16.80)	.874 (22.20)	1.016 (25.80)	1.268 (32.20)
6	.827 (21.00)	1.039 (26.40)	1.181 (30.00)	1.433 (36.40)
7	.992 (25.20)	1.205 (30.60)	1.346 (34.20)	1.598 (40.60)
8	1.157 (29.40)	1.370 (34.80)	1.512 (38.40)	1.764 (44.80)
9	1.323 (33.60)	1.535 (39.00)	1.677 (42.60)	1.929 (49.00)
10	1.488 (37.80)	1.701 (43.20)	1.843 (46.80)	2.094 (53.20)
11	1.654 (42.00)	1.866 (47.40)	2.008 (51.00)	2.260 (57.40)
12	1.819 (46.20)	2.031 (51.60)	2.173 (55.20)	2.425 (61.60)



172648 - \* \* \* \*  
 PLATING SEE NOTE 2  
 0 = TIN  
 1 = GOLD  
 CIRCUIT SIZE  
 ASSEMBLY TYPE  
 1 = SINGLE ROW W/PEGS POSITIVE LOCK  
 2 = SINGLE ROW W/SCREW MOUNT POSITIVE LOCK

- NOTES:  
 1) MATERIAL:  
 HOUSING: UNFILLED NYLON, UL94V-2, IEC 60335-1, 5TH EDITION GLOW WIRE CAPABLE, COLOR - BLACK.  
 TERMINAL: BRASS ALLOY  
 2) FINISH (PLATING):  
 GOLD = .000030/(0.00076) MIN. SELECT GOLD OVER  
 .000100/(0.00254) MIN. SELECT MATTE TIN OVER  
 .000050/(0.00127) MIN. NICKEL OVERALL  
 TIN = .000100/(0.00254) MIN. MATTE TIN OVER  
 .000050/(0.00127) MIN. NICKEL OVERALL  
 3) PRODUCT SPECIFICATION: PS-5556-001  
 4) PACKAGING SPECIFICATION: BULK PACK PER PK-5569-002 TRAY PACK PER PK-5569-005  
 5) PART MATES WITH MINI-FIT JR. RECEPTACLE SERIES 46994.  
 6) SCREW MOUNT PARTS ARE DESIGNED FOR USE WITH #4 OR M3 SELF TAPPING SCREWS.  
 7) DISCOLORATION IN THE BANDOLIER CARRIER AREA OF THE PIN IS INHERENT TO THE PLATING PROCESS AND IS DUE TO THE MASKING EFFECT OF THE CARRIER. THIS DISCOLORATION IS IN A NON-FUNCTIONAL AREA OF THE PIN AND WILL NOT AFFECT THE PERFORMANCE OF THE HEADER ASSEMBLY.  
 8) CONNECTORS ARE NOT TO BE MATED AND UNMATED WHILE CIRCUITS ARE LIVE.  
 9) PARTS ARE NOT DESIGNED FOR CURRENT SHARING.  
 10) PART CONFORMS TO CLASS "B" REQUIREMENTS OF COSMETIC SPECIFICATION PS-45499-002, WITH THE EXCEPTION OF DISCOLORATION, FLASH AND SINK MEET CLASS "C" REQUIREMENTS.  
 11) FORMING MARKS ON PINS ARE ACCEPTABLE.

PART NUMBER	CKT SIZE	MOUNTING OPTION	PLATING	PACKAGING
172648-0102	2	PEG	TIN	TRAY
172648-0104	4			BULK
172648-0105	5			TRAY
172648-0106	6	PEG	GOLD	TRAY
172648-1102	2			BULK
172648-1104	4			BULK
172648-1105	5			TRAY
172648-1106	6			

ADD 286 CKT P/NS IEC NO: UCP/2015-1291 DRAWN BY: 2014/11/21 CHKD: J.BELL 2014/11/21 APPROV: F.S.MITH 2015/02/09	QUALITY SYMBOLS ∇=0 ∇=0 ∇=0	GENERAL TOLERANCES (UNLESS SPECIFIED) mm INCH 4 PLACES ± --- ± --- 3 PLACES ± --- ± .015 2 PLACES ± .38 ± --- 1 PLACE ± --- ± --- 0 PLACE ± --- ± ---	DIMENSION STYLE IN/MM DRAWN BY: NGUYEN DATE: 2014/04/11 CHECKED BY: JBELL DATE: 2014/04/11 APPROVED BY: F.S.MITH DATE: 2014/05/16	SCALE: 1:1 DESIGN UNITS: METRIC THIRD ANGLE PROJECTION
		ANGULAR ± 3° DRAFT WHERE APPLICABLE MUST REMAIN WITHIN DIMENSIONS	MATERIAL NO. SEE CHART DOCUMENT NO. SD-172648-0000	SHEET NO. 1 OF 1
		THIS DRAWING CONTAINS INFORMATION THAT IS PROPRIETARY TO MOLEX INCORPORATED AND SHOULD NOT BE USED WITHOUT WRITTEN PERMISSION		
		molex		