

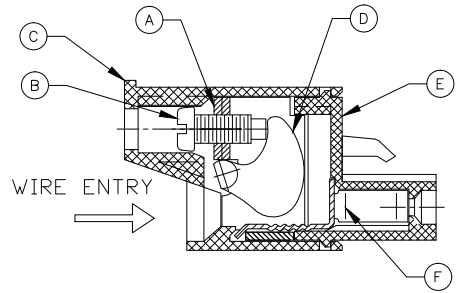
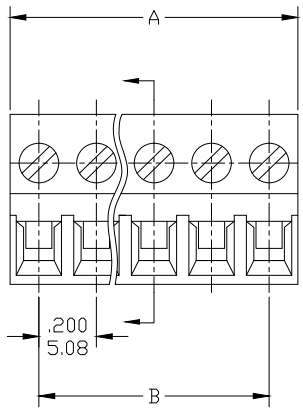
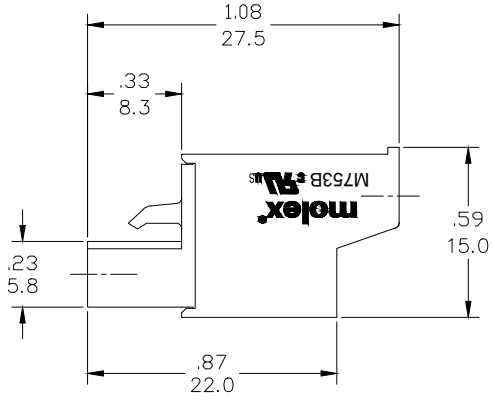
Excellent Integrated System Limited

Stocking Distributor

Click to view price, real time Inventory, Delivery & Lifecycle Information:

[Molex Connector Corporation](#)
[0397090003](#)

For any questions, you can email us directly:
sales@integrated-circuit.com



REF. LAST 2 DIGITS OF PART NUMBER EQUALS CIRCUIT COUNT

M753B-01-2-XX-3
 SERIES
 STYLE
 PITCH
 POSITIONS
 COLOR

SPECIFICATIONS:

- MATERIAL:**
 A. BLOCK: STEEL ZINC PLATED
 B. SCREW: M2.5, STEEL ZINC PLATED
 C. BODY: PA66 UL94 V-0
 D. CAM: STAINLESS STEEL
 E. COVER: PA66 UL94 V-0
 F. TERMINAL: BRASS TIN PLATED
- WIRE SIZE:** 30 TO 12AWG
- RATING:** 15A AT 51-150V, 15A AT 151-300V
- MAX TORQUE:** 3.5 IN. LBS. (.4 Nm)
- WIRE STRIP:** .37 (9.5mm)
- DIELECTRIC VOLTAGE WITHSTAND:** AC 2500V FOR 1 MINUTE
- INSULATION RESISTANCE:** DC 500V, 500MΩ
- RATED IMPULSE VOLTAGE:** 4000V, PLUS AND MINUS 5 TIMES EACH
- OPERATING TEMPERATURE:** -40°C TO +105°C
- DIMS SHOWN ARE FOR REFERENCE ONLY**

PART NUMBER DATA							
CIRCUITS	PART NUMBER	ENGINEERING NUMBER	COLOR	A IN	mm	B IN	mm
2	397090002	M753B-01-2-02-3	GREEN	.42	10.8	.200	5.08
3	397090003	M753B-01-2-03-3	GREEN	.62	15.8	.400	10.15
4	397090004	M753B-01-2-04-3	GREEN	.82	20.9	.600	15.23
5	397080005	M753B-01-2-05-3	GREEN	1.02	26.0	.800	20.31
6	397090006	M753B-01-2-06-3	GREEN	1.22	31.1	1.000	25.39
7	397090007	M753B-01-2-07-3	GREEN	1.42	36.2	1.199	30.46
8	397090008	M753B-01-2-08-3	GREEN	1.62	41.2	1.399	35.54
9	397090009	M753B-01-2-09-3	GREEN	1.82	46.3	1.599	40.62
10	397090010	M753B-01-2-10-3	GREEN	2.02	51.4	1.799	45.70
11	397090011	M753B-01-2-11-3	GREEN	2.22	56.5	1.999	50.77
12	397090012	M753B-01-2-12-3	GREEN	2.42	61.6	2.199	55.85
13		M753B-01-2-13-3	GREEN	2.62	66.6	2.399	60.93
14		M753B-01-2-14-3	GREEN	2.82	71.7	2.599	66.01
15		M753B-01-2-15-3	GREEN	3.02	76.8	2.799	71.08
16		M753B-01-2-16-3	GREEN	3.22	81.9	2.999	76.16
17		M753B-01-2-17-3	GREEN	3.42	87.0	3.198	81.24
18		M753B-01-2-18-3	GREEN	3.62	92.0	3.398	86.32
19		M753B-01-2-19-3	GREEN	3.82	97.1	3.598	91.39
20		M753B-01-2-20-3	GREEN	4.02	102.2	3.798	96.47
21		M753B-01-2-21-3	GREEN	4.22	107.3	3.998	101.55
22		M753B-01-2-22-3	GREEN	4.42	112.4	4.198	106.63
23		M753B-01-2-23-3	GREEN	4.62	117.4	4.398	111.70
24		M753B-01-2-24-3	GREEN	4.82	122.5	4.598	116.78

CONTACT FACTORY FOR OPTIONAL COLORS

RELEASED EC NO: JPC2014-1533 DRWN: RSTONE 2014/03/17 CHKD: --- APPR: JFMURPHY 2014/10/16 REV: A	QUALITY SYMBOL ▽=0 ∇=0	GENERAL TOLERANCES (UNLESS SPECIFIED)		DIMENSION STYLE IN/MM		SCALE ---	DESIGN UNITS METRIC	THIRD ANGLE PROJECTION	
		4 PLACES ±--- ±--- 3 PLACES ±--- ±.005 2 PLACES ±0.13 ±.01 1 PLACE ±0.3 ±---	mm INCH	DRAWN BY RSTONE	DATE 2014/03/17	TITLE TERMINAL PLUG, 5.08MM HORIZONTAL SCREW			
		ANGULAR ±---°		APPROVED BY JFMURPHY	DATE 2014/10/16	MOLEX INCORPORATED			
		DRAFT WHERE APPLICABLE MUST REMAIN WITHIN DIMENSIONS		MATERIAL NO. SEE CHART		DOCUMENT NO. SD-39709-001	SHEET NO. 1 OF 1		