

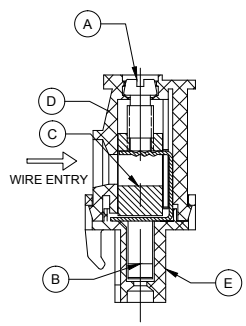
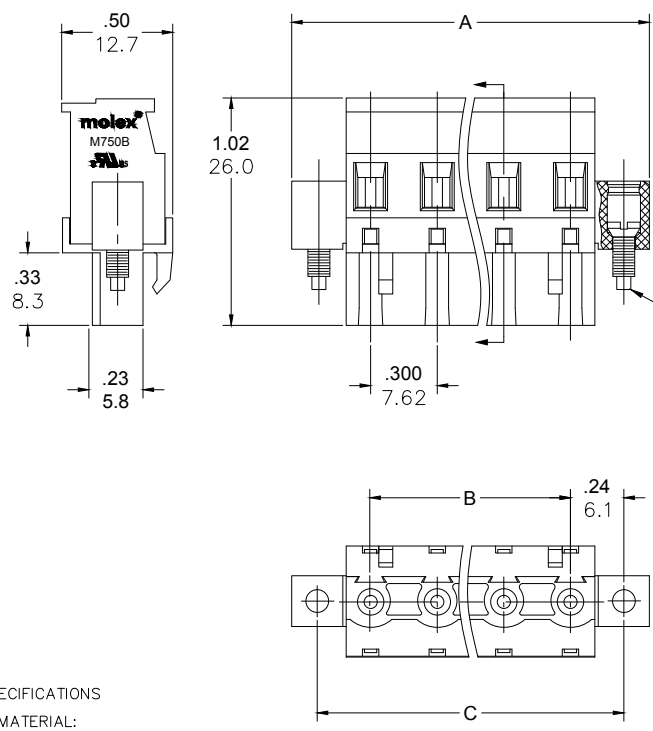
Excellent Integrated System Limited

Stocking Distributor

Click to view price, real time Inventory, Delivery & Lifecycle Information:

[Molex Connector Corporation](#)
[0397120008](#)

For any questions, you can email us directly:
sales@integrated-circuit.com



CONTACT FACTORY FOR OPTIONAL COLORS
M750B-09-5-XX-3
COLOR
POLES
PITCH
STYLE
SERIES

| PART NUMBER DATA | | | | | | | |
|------------------|-------------|--------------------|-------|---------|---------|---------|-------|
| CIRCUITS | PART NUMBER | ENGINEERING NUMBER | COLOR | A IN mm | B IN mm | C IN mm | |
| 2 | 397120002 | M750B-09-5-02-3 | GREEN | 1.01 | 25.7 | .300 | 7.62 |
| 3 | 397120003 | M750B-09-5-03-3 | GREEN | 1.31 | 33.3 | .600 | 15.24 |
| 4 | 397120004 | M750B-09-5-04-3 | GREEN | 1.61 | 40.9 | .900 | 22.86 |
| 5 | 397120005 | M750B-09-5-05-3 | GREEN | 1.91 | 48.5 | 1.200 | 30.48 |
| 6 | 397120006 | M750B-09-5-06-3 | GREEN | 2.21 | 56.2 | 1.500 | 38.10 |
| 7 | 397120007 | M750B-09-5-07-3 | GREEN | 2.51 | 63.8 | 1.800 | 45.72 |
| 8 | 397120008 | M750B-09-5-08-3 | GREEN | 2.81 | 71.4 | 2.100 | 53.34 |
| 9 | 397120009 | M750B-09-5-09-3 | GREEN | 3.11 | 79.0 | 2.400 | 60.96 |
| 10 | 397120010 | M750B-09-5-10-3 | GREEN | 3.41 | 86.6 | 2.700 | 68.58 |
| 11 | 397120011 | M750B-09-5-11-3 | GREEN | 3.71 | 94.3 | 3.000 | 76.20 |
| 12 | 397120012 | M750B-09-5-12-3 | GREEN | 4.01 | 101.9 | 3.300 | 83.82 |

SPECIFICATIONS

- MATERIAL:
 - A. SCREW: STEEL, M3, ZINC PLATED
 - B. CONTACT : BRONZE, TIN PLATED
 - C. CAGE: BRASS, NICKEL PLATED
 - D. BODY : PA66, UL94 V-0
 - E. COVER: PA66, UL94 V-0
 - F. MOUNTING SCREW: STEEL, M2.5, ZINC PLATED
- WIRE SIZE: 30-12AWG
- RATING: 15A AT 51-150V, 15A AT 151-300V
- POWER-FREQUENCY WITHSTAND: AC 2500V/1MIN.
- INSULATION RESISTANCE: DC500V 500MΩ OR ABOVE
- RATED IMPULSE VOLTAGE: 4000V/PLUS AND MINUS 5 TIMES EACH
- WIRE STRIP LENGTH: .28 IN. (7.0mm)
- SCREW TORQUE: 5.0 IN LBS. (0.56 N.M)
- OPERATING TEMPERATURE: -40°C TO +105°C
- DIMS SHOWN ARE FOR REFERENCE ONLY

REF. LAST 2 DIGITS OF PART NUMBER EQUALS CIRCUIT COUNT

| | | | | | | | | | |
|--|------------------------------|---|---------|----------------------------|--------------------|--|------------------------------|------------------------|--|
| RELEASED EC NO: JPC2014-1533 DRWN: RSTONE 2014/03/20 CHKD: G. FARNS APPR: JFMURPHY 2014/10/16 A | QUALITY SYMBOL ▽=0 ∇=0 | GENERAL TOLERANCES (UNLESS SPECIFIED) | | DIMENSION STYLE MM ONLY | | SCALE --- | DESIGN UNITS METRIC | THIRD ANGLE PROJECTION | |
| | | 4 PLACES ±-- ±-- 3 PLACES ±-- ±.005 2 PLACES ±0.13 ±.01 1 PLACE ±0.3 ±-- | mm INCH | DRAWN BY RSTONE | DATE 2014/02/27 | TITLE PLUGGABLE TERMINAL BLOCK 7.62MM (.300) PITCH VERT FRONT FACING-MTG ENDS | | | |
| | | ANGULAR ±--° | | CHECKED BY G. FARNS | DATE --- | MOLEX INCORPORATED | | | |
| | | DRAFT WHERE APPLICABLE MUST REMAIN WITHIN DIMENSIONS | | APPROVED BY JFMURPHY | DATE 2014/10/16 | MATERIAL NO. SEE CHART | DOCUMENT NO. SD-39712-001 | SHEET NO. 1 OF 1 | |