

Excellent Integrated System Limited

Stocking Distributor

Click to view price, real time Inventory, Delivery & Lifecycle Information:

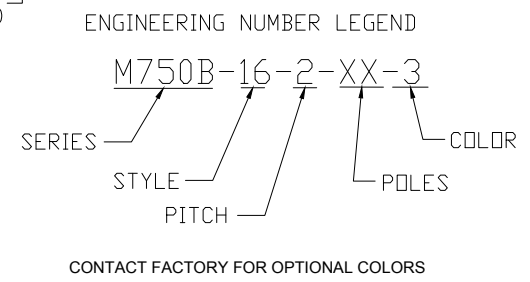
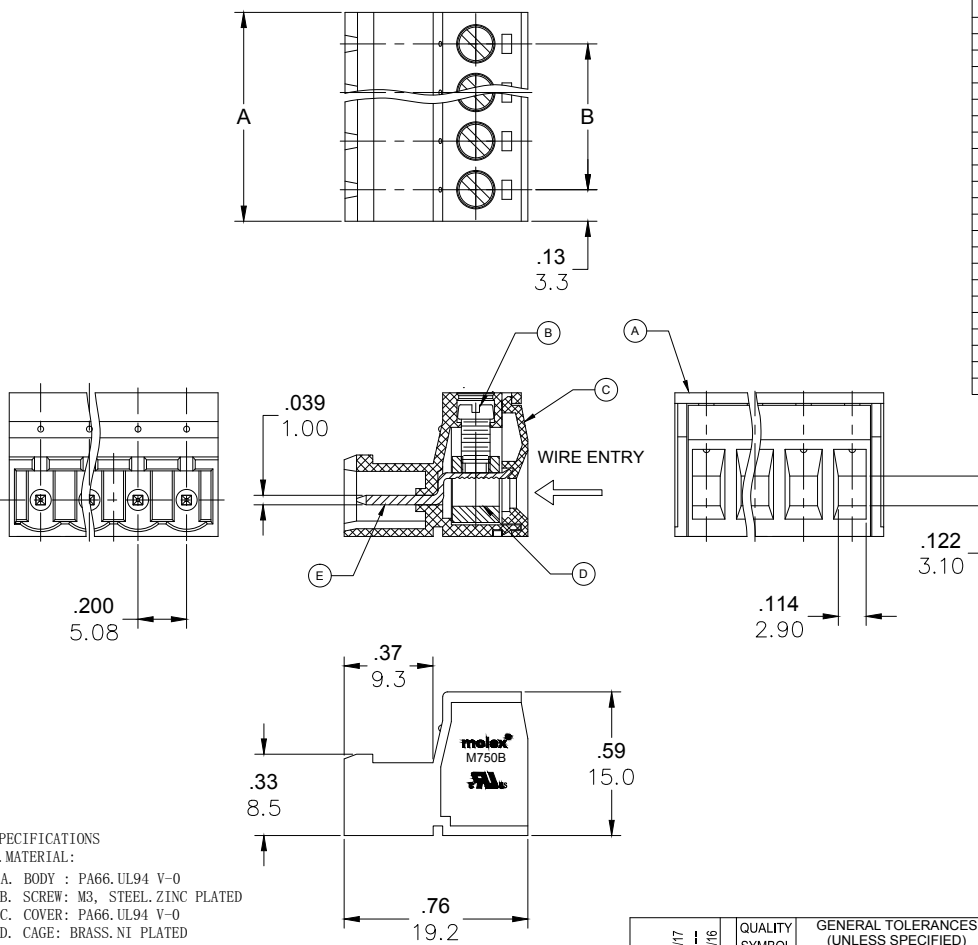
[Molex Connector Corporation](#)
[0397150005](#)

For any questions, you can email us directly:

sales@integrated-circuit.com

PART NUMBER DATA						
CIRCUITS	PART NUMBER	ENGINEERING NUMBER	COLOR	A IN mm	B IN mm	
2	397150002	M750B-16-2-02-3	GREEN	.46	11.7	.200 5.08
3	397150003	M750B-16-2-03-3	GREEN	.66	16.7	.400 10.16
4	397150004	M750B-16-2-04-3	GREEN	.86	21.8	.600 15.24
5	397150005	M750B-16-2-05-3	GREEN	1.06	26.9	.800 20.32
6	397150006	M750B-16-2-06-3	GREEN	1.26	32.0	1.000 25.40
7	397150007	M750B-16-2-07-3	GREEN	1.46	37.1	1.200 30.48
8	397150008	M750B-16-2-08-3	GREEN	1.66	42.1	1.400 35.56
9	397150009	M750B-16-2-09-3	GREEN	1.86	47.2	1.600 40.64
10	397150010	M750B-16-2-10-3	GREEN	2.06	52.3	1.800 45.72
11	397150011	M750B-16-2-11-3	GREEN	2.26	57.4	2.000 50.80
12	397150012	M750B-16-2-12-3	GREEN	2.46	62.5	2.200 55.88
13		M750B-16-2-13-3	GREEN	2.66	67.5	2.400 60.96
14		M750B-16-2-14-3	GREEN	2.86	72.6	2.600 66.04
15		M750B-16-2-15-3	GREEN	3.06	77.7	2.800 71.12
16		M750B-16-2-16-3	GREEN	3.26	82.8	3.000 76.20
17		M750B-16-2-17-3	GREEN	3.46	87.9	3.200 81.28
18		M750B-16-2-18-3	GREEN	3.66	92.9	3.400 86.36
19		M750B-16-2-19-3	GREEN	3.86	98.0	3.600 91.44
20		M750B-16-2-20-3	GREEN	4.06	103.1	3.800 96.52
21		M750B-16-2-21-3	GREEN	4.26	108.2	4.000 101.59
22		M750B-16-2-22-3	GREEN	4.46	113.3	4.200 106.67
23		M750B-16-2-23-3	GREEN	4.66	118.3	4.400 111.75
24		M750B-16-2-24-3	GREEN	4.86	123.4	4.600 116.83

REF. LAST 2 DIGITS OF PART NUMBER EQUALS CIRCUIT COUNT



- SPECIFICATIONS
- MATERIAL:
 - A. BODY : PA66, UL94 V-0
 - B. SCREW: M3, STEEL, ZINC PLATED
 - C. COVER: PA66, UL94 V-0
 - D. CAGE: BRASS, NI PLATED
 - E. TERMINAL : BRASS, TIN PLATED
 - WIRE SIZE: 24~12AWG
 - RATING: 250V, 12A
 - MAX TORQUE : 4.4LBF. IN
 - WIRE STRIP LENGTH: .20in. (5.0mm)
 - OPERATING TEMPERATURE: -40°C TO +105°C
 - DIMS. SHOWN ARE FOR REFERENCE ONLY

RELEASED EC NO: JPC2014-176 DRWN: RSTONE 2014/04/17 CHKD: G FARNSW APPR: JFMURPHY 2014/10/16 REV: A	QUALITY SYMBOL ▽=0 ∇=0	GENERAL TOLERANCES (UNLESS SPECIFIED) <table border="1"> <tr><th></th><th>mm</th><th>INCH</th></tr> <tr><td>4 PLACES</td><td>±---</td><td>±---</td></tr> <tr><td>3 PLACES</td><td>±---</td><td>±.005</td></tr> <tr><td>2 PLACES</td><td>±0.13</td><td>±.01</td></tr> <tr><td>1 PLACE</td><td>±0.3</td><td>±---</td></tr> </table>		mm	INCH	4 PLACES	±---	±---	3 PLACES	±---	±.005	2 PLACES	±0.13	±.01	1 PLACE	±0.3	±---	DIMENSION STYLE IN/MM	SCALE ---	DESIGN UNITS METRIC	THIRD ANGLE PROJECTION
		mm	INCH																		
	4 PLACES	±---	±---																		
	3 PLACES	±---	±.005																		
2 PLACES	±0.13	±.01																			
1 PLACE	±0.3	±---																			
DRAFT WHERE APPLICABLE MUST REMAIN WITHIN DIMENSIONS	DRAWN BY: RSTONE CHECKED BY: DATE G FARNSW	APPROVED BY: JFMURPHY DATE: 2014/10/16	TITLE: PLUG, 5.08MM MALE, HORIZONTAL	MOLEX INCORPORATED	SHEET NO. 1 OF 1																
SEE CHART	MATERIAL NO.	DOCUMENT NO. SD-39715-001																			
THIS DRAWING CONTAINS INFORMATION THAT IS PROPRIETARY TO MOLEX INCORPORATED AND SHOULD NOT BE USED WITHOUT WRITTEN PERMISSION																					