

## Excellent Integrated System Limited

Stocking Distributor

Click to view price, real time Inventory, Delivery & Lifecycle Information:

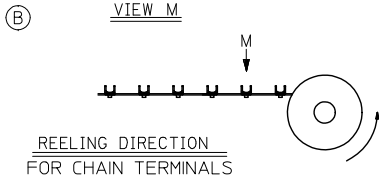
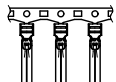
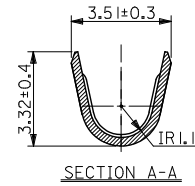
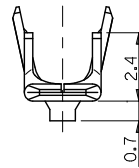
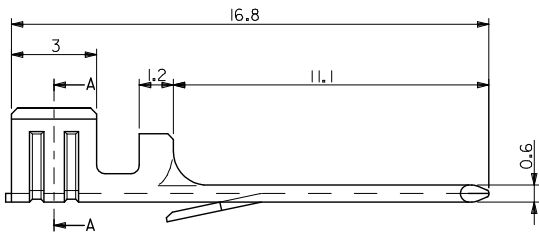
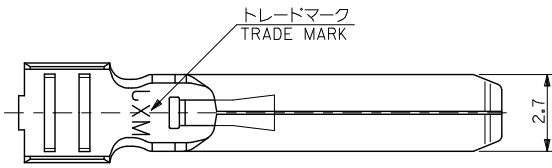
[Molex Connector Corporation](#)  
[0561934128](#)

For any questions, you can email us directly:  
[sales@integrated-circuit.com](mailto:sales@integrated-circuit.com)

10 9 8 7 6 5 4 3 2 1

注記  
NOTES

1. 材質  
MATERIAL  
黄銅 (板厚: 0.3)  
BRASS (THICKNESS : 0.3)
2. メッキ仕様  
TERMINAL PLATING  
接点部 : 金メッキ 0.25 μm MIN.  
CONTACT AREA : GOLD 0.25 μm MIN.  
圧着部 : 錫メッキ 1.0 μm MIN.  
CRIMP AREA : TIN 1.0 μm MIN.  
下地メッキ : ニッケルメッキ 2 μm MIN.  
UNDER PLATE : NICKEL 2 μm MIN.
3. 適用電線範囲 : UL 1015, AWG #18~14  
APPLICABLE WIRE RANGE : UL1015, AWG #18~14
4. 被覆外径 : φ3.8 MAX.  
INSULATION EXTERNAL DIA : φ3.8 MAX.
5. 適用ハウジング : 55890-\*\*\*\*, 55891-\*\*\*\*  
APPLICABLE HOUSING : 55890-\*\*\*\*, 55891-\*\*\*\*
6. 適用圧着工具 (手動) : 57413-5300 (適用電線 : AWG #16~14)  
: 57413-5400 (適用電線 : AWG #18)  
: 57413-5400 (APPLICABLE WIRE AWG #18)  
(B) : 63819-2200 (AWG #18-14)
7. TERMINAL EXTRACTION TOOL : 63813-2800
8. 本製品は 56193-4185 の鉛フリー品である。  
THIS PRODUCT IS LEAD FREE OF 56193-4185.



(B)	CHAIN	56193-4028	56193-4***
	バラ状 LOOSE	56193-4128	56193-4***
	端子形状 TERMINAL CONFIGURATION	MATERIAL No.	MODEL NO.

ADDED CHAIN TERM. EC NO: WNA2009-0729 DRAWN: MOELLER 2009/05/06 CHKD: ROSS 2009/05/07 APPR: ROSS 2009/05/07	DESCRIPTION	GENERAL TOLERANCES (UNLESS SPECIFIED)		DIMENSION STYLE		SCALE	DESIGN UNITS	THIRD ANGLE PROJECTION		
				MM ONLY		1:1	METRIC			
		10 UNDER	± 0.2	DRAWN BY	DATE	TITLE				
		10 OVER 30 UNDER	± 0.25	M. NABEI	'07/10/30	COMPACT ROBOT CONN. POWER CRIMP PIN -LEAD FREE-				
		30 OVER	± 0.3	CHECKED BY	DATE	MOLEX INCORPORATED				
		ANGULAR ± 3 °		APPROVED BY	DATE	MATERIAL NO. DOCUMENT NO.				
		DRAFT WHERE APPLICABLE MUST REMAIN WITHIN DIMENSIONS		SEE TABLE		SD-56193-003		SHEET NO. 1 OF 1		
				THIS DRAWING CONTAINS INFORMATION THAT IS PROPRIETARY TO MOLEX INCORPORATED AND SHOULD NOT BE USED WITHOUT WRITTEN PERMISSION						