

## Excellent Integrated System Limited

Stocking Distributor

Click to view price, real time Inventory, Delivery & Lifecycle Information:

[Molex Connector Corporation](#)  
[0733000230](#)

For any questions, you can email us directly:

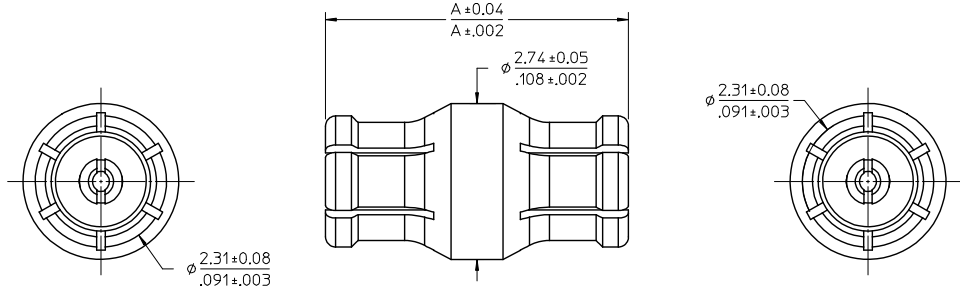
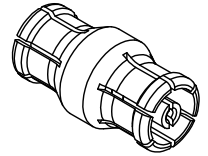
[sales@integrated-circuit.com](mailto:sales@integrated-circuit.com)

MATERIALS AND FINISHES:

BODY: BERYLLIUM COPPER  
 PLATED GOLD PER MIL-G-45204 TYPE II, GRADE C, CLASS 1 (50 μ-in MIN)  
 OVER NICKEL 50 μ-in MIN

INSULATOR: PTFE

CONTACT: BERYLLIUM COPPER  
 PLATED GOLD PER MIL-G-45204 TYPE II, GRADE C, CLASS 1 (50 μ-in MIN)  
 OVER NICKEL 50 μ-in MIN



73300-0232	.468 / 11.89	14.59
73300-0231	.186 / 4.73	7.43
73300-0230	.906 / 23.00	25.7
73300-0229	.524 / 13.30	16.0
73300-0228	.197 / 5.00	7.7
73300-0227	.334 / 8.48	11.2
73300-0226	.750 / 19.05	21.8
73300-0225	.500 / 12.70	15.4
73300-0224	.349 / 8.86	11.6
73300-0223	.327 / 8.31	11.0
73300-0222	.278 / 7.06	9.8
73300-0221	.260 / 6.60	9.3
73300-0220	.210 / 5.33	8.0
PART NO.	IN / MM	TYPICAL
	DIM A	PCB GAP (MM)

VSWR (TYP):  
 1.15 TO 18 GHz  
 1.25 TO 40 GHz  
 1.35 TO 65 GHz

BOARD GAP USING 73300-0440 AND EQUIVALENT P/N SERIES

PS-89675-3730	PRODUCT SPECIFICATION
MIL-STD-348B, FIG.79	INTERFACE SMPM SOCKET
SPECIFICATION	DESCRIPTION
DIMENSION STYLE MM/IN	SCALE 20:1
DRAWN BY JWIENER	DATE 2013/05/10
CHECKED BY SSS	DATE 2015/03/17
APPROVED BY JWIENER	DATE 2013/08/16
ANGULAR ± 2 °	MATERIAL NO.
DRAFT WHERE APPLICABLE MUST REMAIN WITHIN DIMENSIONS	DOCUMENT NO. SD-73300-022
SIZE C	SHEET NO. 1 OF 1

QUALITY SYMBOLS	GENERAL TOLERANCES (UNLESS SPECIFIED)
▽=0	4 PLACES ± --- ± ---
▽=0	3 PLACES ± --- ± ---
▽=0	2 PLACES ± --- ± ---
▽=0	1 PLACE ± --- ± ---
▽=0	0 PLACE ± --- ± ---

CHG:ADD -0232	2016/06/22
PER: PDR:16062276	
EC NO: URF:2016-0856	
DRW:WYR:EH	
CHKD: CHKD:	
APPR: Y.CHENG	
REV	DESCRIPTION
A5	

**molex**

SMPM JACK/JACK BULLET  
 SMPM-J/J EWR-5161