

## Excellent Integrated System Limited

Stocking Distributor

Click to view price, real time Inventory, Delivery & Lifecycle Information:

[Molex Connector Corporation](#)  
[0734036268](#)

For any questions, you can email us directly:

[sales@integrated-circuit.com](mailto:sales@integrated-circuit.com)

MATERIALS AND FINISHES

BODY: BRASS  
PLATED: NICKEL

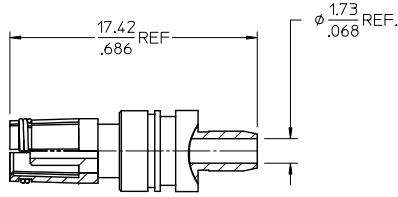
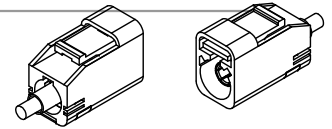
CENTER CONTACT: PHOSPOR BRONZE  
PLATED: GOLD

CRIMP TUBE: BRASS  
PLATED: NICKEL

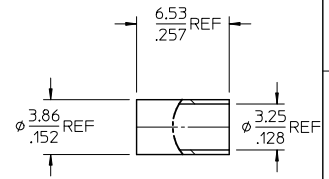
OUTER CASING: NYLON 66 OR EQUIVALENT  
KEYING: SEE TABLE  
COLOR: SEE TABLE

INSULATOR: PP

PACKAGING BY SINGLE BAG

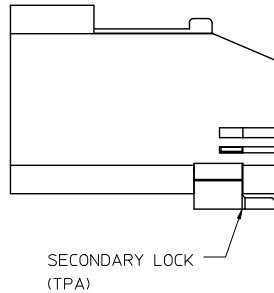
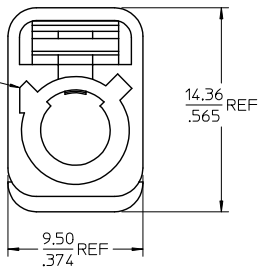


CENTER CONTACT  
PART NO.: 89538-0781

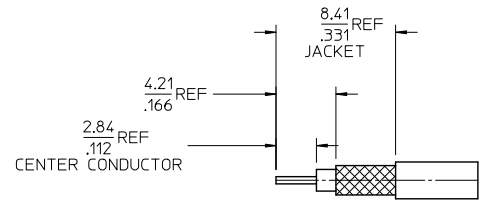


CRIMP TUBE  
PART NO.: 89613-1792

FAKRA  
CONNECTOR  
KEYING  
CODE B SHOWN



SECONDARY LOCK  
(TPA)

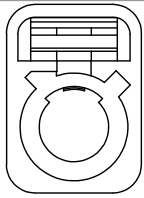


PART # SEE SHEET 2

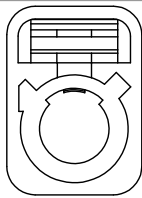
AS-73597-045	ASSYEMBLY INSTRUCTIONS
PS-89675-331	PRODUCT SPECIFICATION
DIN 72594-1	INTERFACE SPECIFICATION
SPECIFICATION	DESCRIPTION

TYPED BY: URF EC NO: URF2014-0148 DRAWN BY: ELIN CHKD: KERRIE APPR: MHUANG DATE: 2013/09/10 DESCRIPTION: 2013/09/10 REV: A1	QUALITY SYMBOLS	GENERAL TOLERANCES (UNLESS SPECIFIED)	DIMENSION STYLE	SCALE	DESIGN UNITS	THIRD ANGLE PROJECTION	TITLE	MATERIAL NO.	DOCUMENT NO.	SHEET NO.
	∇=0 ∇=0 ∇=0	mm INCH 4 PLACES ± --- ± --- 3 PLACES ± --- ± --- 2 PLACES ± --- ± --- 1 PLACE ± --- ± --- 0 PLACE ± --- ± ---	MM/IN	5:1	METRIC	SMB PLUG FAKRA II STR. 50 OHMS FOR RG316 FAKRA II -PC <b>molex</b>	SEE SHEET 2	SD-73403-626	1 OF 3	
	ANGULAR ± 2 °	DRAFT WHERE APPLICABLE MUST REMAIN WITHIN DIMENSIONS	SIZE C	THIS DRAWING CONTAINS INFORMATION THAT IS PROPRIETARY TO MOLEX INCORPORATED AND SHOULD NOT BE USED WITHOUT WRITTEN PERMISSION						

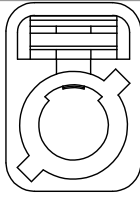
13 12 11 10 9 8 7 6 5 4 3 2 1



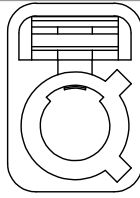
CODE A



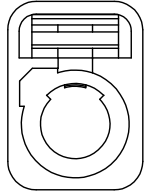
CODE B



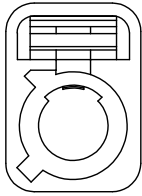
CODE C



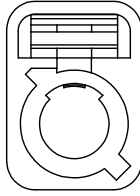
CODE D



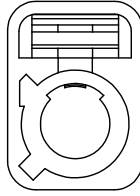
CODE E



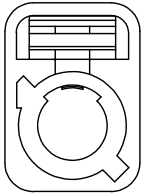
CODE F



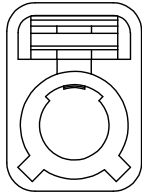
CODE G



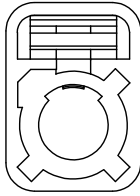
CODE H



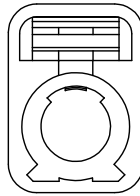
CODE I



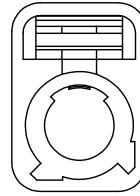
CODE K



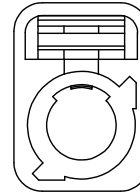
CODE Z



CODE L



CODE M

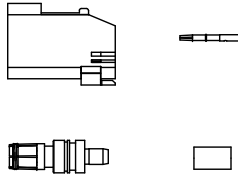


CODE N

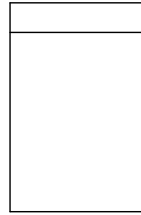
N	PASTEL GREEN	73403-6273
M	PASTEL ORANGE	73403-6272
L	CARMINE RED	73403-6271
Z	WATER BLUE	73403-6270
K	CURRY YELLOW	73403-6269
I	BEIGE	73403-6268
H	VIOLET	73403-6267
G	GRAY	73403-6266
F	BROWN	73403-6265
E	GREEN	73403-6264
D	BORDEAUXVIOLET	73403-6263
C	BLUE	73403-6262
B	CREAM WHITE	73403-6261
A	BLACK	73403-6260
KEYING CODE	COLOR	PART NO.

SEE SHEET 1 EC NO: URF-2014-0148 DRAWN BY: DRWMLIN CHKD: APHRHUANG APPROVAL: 2013/09/10	QUALITY SYMBOLS ∇=0 ∇=0 ∇=0	GENERAL TOLERANCES (UNLESS SPECIFIED)		DIMENSION STYLE MM/IN		SCALE 5:1	DESIGN UNITS METRIC	THIRD ANGLE PROJECTION
		4 PLACES ± --- ± --- 3 PLACES ± --- ± --- 2 PLACES ± --- ± --- 1 PLACE ± --- ± --- 0 PLACE ± --- ± ---	mm INCH	DRAWN BY: ELIN DATE: 2012/12/05	CHECKED BY: KERRIE DATE: 2012/12/05	APPROVED BY: MHUANG DATE: 2013/07/10	MATERIAL NO. SEE TABLE	DOCUMENT NO. SD-73403-626
DRAFT WHERE APPLICABLE MUST REMAIN WITHIN DIMENSIONS		THIS DRAWING CONTAINS INFORMATION THAT IS PROPRIETARY TO MOLEX INCORPORATED AND SHOULD NOT BE USED WITHOUT WRITTEN PERMISSION						

1b\_frame\_C\_P\_AM\_T Rev. G 2012/01/11 12 11 10 9 8 7 6 5 4 3 2 1



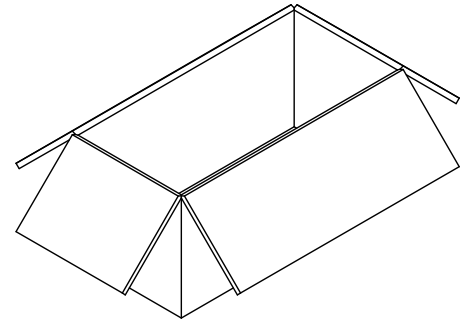
SHROUD WITH TPA x1  
CRIMP TUBE x1  
SMB SUB ASSY x1  
CENTER CONTACT x1



1 SET PER BAG  
BAG P/N: 89707-0317



50 SET PER BAG  
BAG P/N: 89707-0174  
6' x 12'



500 SET PER CARTON BOX  
P/N: 96707-0002  
367\*176\*188mm

SEE SHEET 1 EC NO: URF2014-0148 DRAWN BY: DRWANELIN CHKD: APPR:MHUANG DATE: 2013/09/10	QUALITY SYMBOLS □=0 ▽=0 ▽=0	GENERAL TOLERANCES (UNLESS SPECIFIED)		DIMENSION STYLE		SCALE	DESIGN UNITS	THIRD ANGLE PROJECTION		
		mm	INCH	MM/IN	1:3.33	METRIC	TITLE SMB PLUG FAKRA II STR. 50 OHMS FOR RG316 FAKRA II -PC <b>molex</b>			
		4 PLACES ± ---	± ---	ELIN	2012/12/05	DOCUMENT NO. SD-73403-626				
		3 PLACES ± ---	± ---	CHECKED BY	DATE	SHEET NO. 3 OF 3				
2 PLACES ± ---	± ---	KERRIE	2012/12/05	SEE SHEET 2						
1 PLACE ± ---	± ---	APPROVED BY	DATE	THIS DRAWING CONTAINS INFORMATION THAT IS PROPRIETARY TO MOLEX INCORPORATED AND SHOULD NOT BE USED WITHOUT WRITTEN PERMISSION						
0 PLACE ± ---	± ---	MHUANG	2013/07/10							
ANGULAR ± 2°		DRAFT WHERE APPLICABLE MUST REMAIN WITHIN DIMENSIONS		SIZE						