

Excellent Integrated System Limited

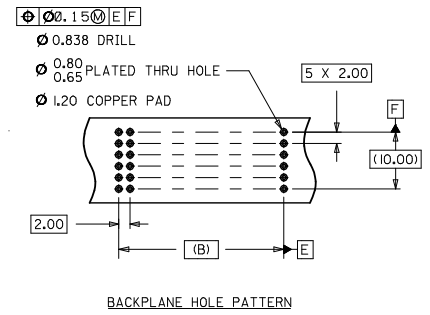
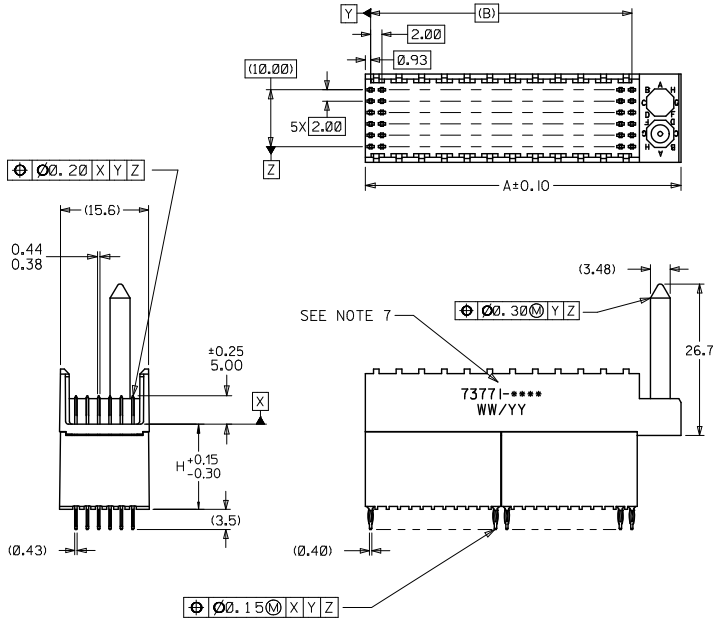
Stocking Distributor

Click to view price, real time Inventory, Delivery & Lifecycle Information:

[Molex Connector Corporation](#)
[0737711200](#)

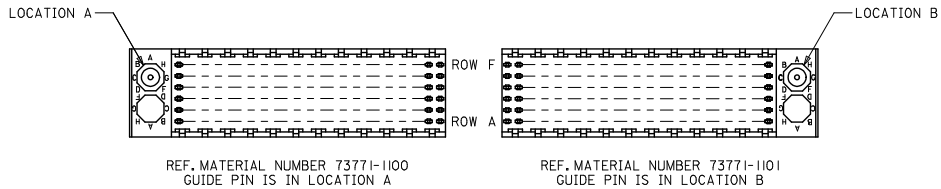
For any questions, you can email us directly:
sales@integrated-circuit.com

ASSEMBLY P/N	TOTAL NUMBER OF SIGNAL CONTACTS	DIM "A"	DIM "B"	DIM "H"
73771-01**	72	31.6	22.00	15.05
73771-02**	72	31.6	22.00	6.05
73771-03**	72	31.6	22.00	10.05
73771-11**	144	55.6	46.00	15.05
73771-12**	144	55.6	46.00	6.05
73771-13**	144	55.6	46.00	10.05

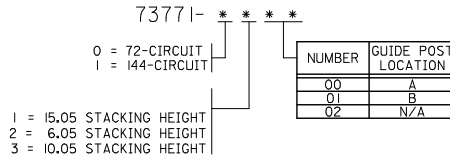


- NOTES:
1. MATERIALS: HOUSING-LIQUID CRYSTAL POLYMER (LCP), GLASS FILLED, UL 94V-0, COLOR: BLACK, TERMINAL-PHOSPHOR BRONZE
 2. FINISH: SELECTIVE GOLD (Au) IN CONTACT AREA, 0,00076 mm MINIMUM THICKNESS; SELECTIVE MATTE TIN (Sn) ON TAILS, NICKEL (Ni) OVERALL.
 3. THIS PART CONFORMS TO MOLEX PRODUCT SPECIFICATION PS-73780-999.
 4. THIS PART CONFORMS TO COSMETIC SPECIFICATION PS-45499-002 CLASS C.
 5. RECOMMENDED PCB THICKNESS: 2.50 MIN.
 6. PACKAGE PER PK-70873-0870, PK-70873-0871 OR PK-70873-0875.
 7. PART MARKED WITH PART NUMBER AND DATE CODE APPROXIMATELY WHERE SHOWN.

LEAD FREE CONVERSION EC NO: UCP2015-3253 DRAWN BY: JWH/HP/LE 2013/02/04 CHKD BY: M/OL/PE 2013/02/04 APPR: SMILLER 2013/08/05	QUALITY SYMBOLS ▽=0 ▽=0 ▽=0	GENERAL TOLERANCES (UNLESS SPECIFIED)		DIMENSION STYLE		SCALE	DESIGN UNITS	THIRD ANGLE PROJECTION	
		mm	INCH	MM ONLY	DATE	2:1	METRIC		
		4 PLACES	±	---	DRAWN BY	1997/03/07	TITLE SALES ASSEMBLY HDM BACKPLANE STACKING MOD CLOSED END OPT PRESSFIT		
		3 PLACES	±	---	CHECKED BY	1997/03/07			
		2 PLACES	±	0,05	SREED	1997/03/07	molex		
		1 PLACE	±	0,10	APPROVED BY	1997/03/07			
		0 PLACE	±	---	CBIXLER	1997/03/07	DOCUMENT NO. SD-73771-001		
		ANGULAR ±1/2°		MATERIAL NO.		SEE CHART			
DRAFT WHERE APPLICABLE MUST REMAIN WITHIN DIMENSIONS		SIZE C		THIS DRAWING CONTAINS INFORMATION THAT IS PROPRIETARY TO MOLEX INCORPORATED AND SHOULD NOT BE USED WITHOUT WRITTEN PERMISSION					



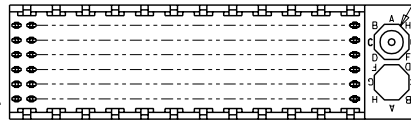
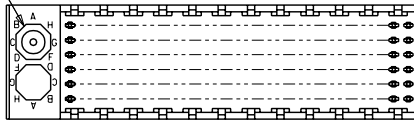
MATERIAL NUMBER ASSIGNMENT



LEAD FREE CONVERSION EC NO: UCP/2015-3253 DRAWN BY: PPLE 2013/02/04 CHECKED BY: CHK 2013/02/04 APPROVED BY: APPR 2013/08/05	QUALITY SYMBOLS ∇=0 ∇=0 ∇=0	GENERAL TOLERANCES (UNLESS SPECIFIED)		DIMENSION STYLE MM ONLY		SCALE 1:1	DESIGN UNITS METRIC	THIRD ANGLE PROJECTION		
		4 PLACES	±---	±---	DRAWN BY	DATE	TITLE SALES ASSEMBLY HDM BACKPLANE STACKING MOD CLOSED END OPT PRESSFIT molex DOCUMENT NO. SD-73771-001 SHEET NO. 2 OF 2			
		3 PLACES	±---	±---	CHECKED BY	DATE				
		2 PLACES	±0.05	±---	SREED	1997/03/07				
1 PLACE	±0.10	±---	APPROVED BY	DATE						
			0 PLACE	±---	±---	CBIXLER	1997/03/07			
		ANGULAR ±1/2°		MATERIAL NO. SEE TABLE						
		DRAFT WHERE APPLICABLE MUST REMAIN WITHIN DIMENSIONS		SIZE C		THIS DRAWING CONTAINS INFORMATION THAT IS PROPRIETARY TO MOLEX INCORPORATED AND SHOULD NOT BE USED WITHOUT WRITTEN PERMISSION				

LOCATION A

LOCATION B



REF. MATERIAL NUMBER 73771-1100
GUIDE PIN IS IN LOCATION A

REF. MATERIAL NUMBER 73771-1101
GUIDE PIN IS IN LOCATION B

MATERIAL NUMBER ASSIGNMENT

73771- * * * *

0 = 72-CIRCUIT
1 = 144-CIRCUIT

1 = 15.05 STACKING HEIGHT
2 = 6.05 STACKING HEIGHT
3 = 10.05 STACKING HEIGHT

NUMBER	GUIDE POST LOCATION
00	A
01	B
02	N/A

SEE SHEET 1 EC NO. UDT2000-1073 DRW:JBINGHAM 000508 CHK: REED 000508 APPR:CBIXLER 000508	QUALITY SYMBOLS MAJOR = 0 CRITICAL = 0 V = 0	GENERAL TOLERANCES: (UNLESS SPECIFIED) mm INCH 4 PLACES ±0.1 ±. 3 PLACES ±0.1 ±. 2 PLACES ±0.N/A ±. 1 PLACE ±0.N/A ±. ANGULAR: ± °	SCALE NO:NE DESIGN UNITS: <input checked="" type="checkbox"/> mm <input type="checkbox"/> INCH DRAWN BY & DATE JBINGHAM 97/03/07 CHECKED BY & DATE SREED 97/03/07 APPROVED BY & DATE CBIXLER 97/03/07	THIRD ANGLE PROJECTION DIMENSIONS: <input type="checkbox"/> INCH <input type="checkbox"/> INCH <input checked="" type="checkbox"/> mm <input type="checkbox"/> mm ONLY SHT REV REVISE ON CAD ONLY	TITLE: SALES ASSEMBLY HDM BACKPLANE STACKING MODULE POLAR/GUIDE OPTION PRESSFIT MOLEX INCORPORATED	CAD FILENAME S73771X2.DGN	MATERIAL NO. SEE CHART	DRAWING NO. SD-73771-001	SHEET NO. 2	SIZE B