

## **Excellent Integrated System Limited**

Stocking Distributor

Click to view price, real time Inventory, Delivery & Lifecycle Information:

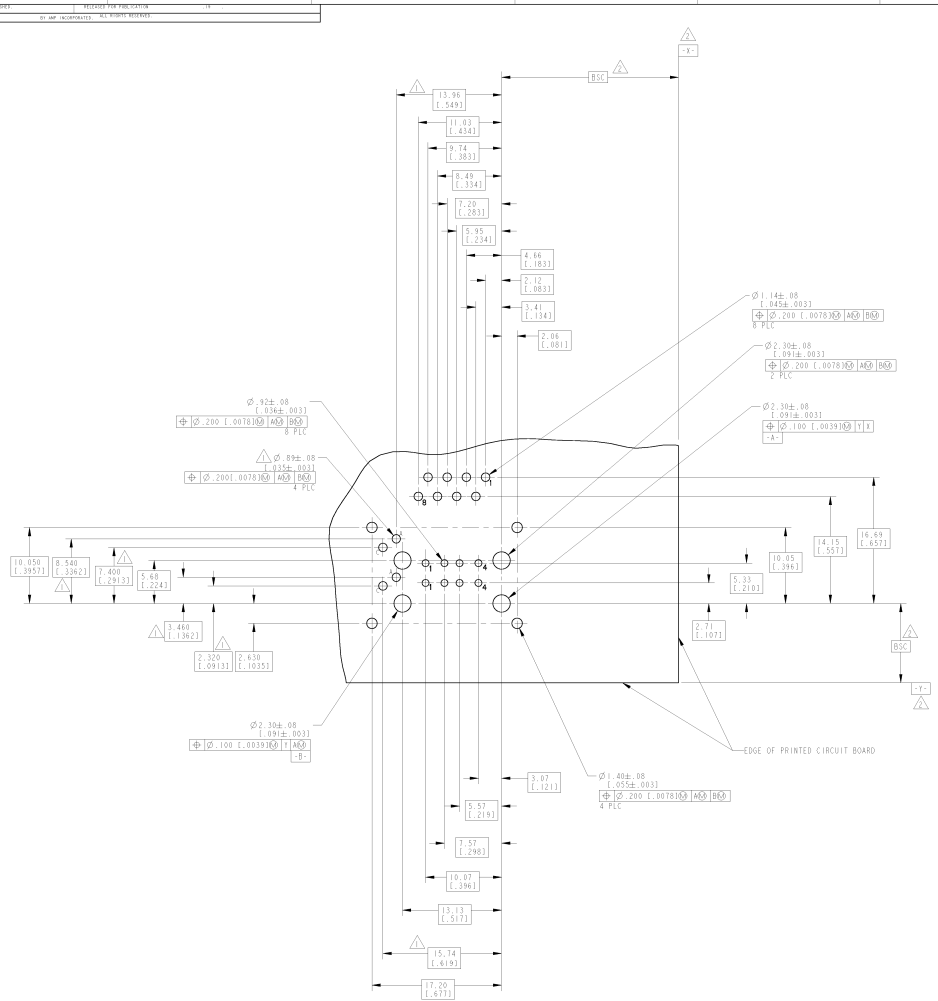
[TE Connectivity AMP Connectors](#)  
[1116151-1](#)

For any questions, you can email us directly:

[sales@integrated-circuit.com](mailto:sales@integrated-circuit.com)



REV	DATE	DESCRIPTION	BY	CHK	APP
AA	22				
		SEE SHEET 1			



RECOMMENDED PCB LAYOUT

DIMENSIONS		UNITS		TOLERANCES		MATERIALS		FINISHES		OTHER	
mm	(INCHES)	±		±		PLT	PLT	PLT	PLT	PLT	PLT
Ø		±		±		PLT	PLT	PLT	PLT	PLT	PLT
MATERIAL		FINISH		OTHER		OTHER		OTHER		OTHER	
COPPER DRIVING		COPPER DRIVING		COPPER DRIVING		COPPER DRIVING		COPPER DRIVING		COPPER DRIVING	

**AMP** Precision Interconnect  
 Harrisburg, PA 17105-2400

ASSEMBLY: RJ-45 MODULAR JACK OVER STACKED USB RECEPTACLE WITH LEADS AND WITHOUT LEADS

Part Number: 116151-1  
 Revision: A | 00779