

## Excellent Integrated System Limited

Stocking Distributor

Click to view price, real time Inventory, Delivery & Lifecycle Information:

[Cinch Connectivity Solutions](#)

[CPL-5212-06-NNN-79](#)

For any questions, you can email us directly:

[sales@integrated-circuit.com](mailto:sales@integrated-circuit.com)

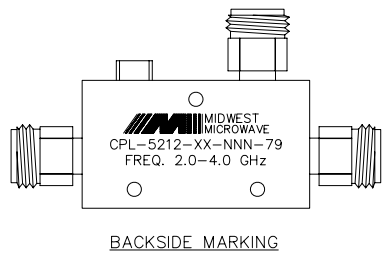
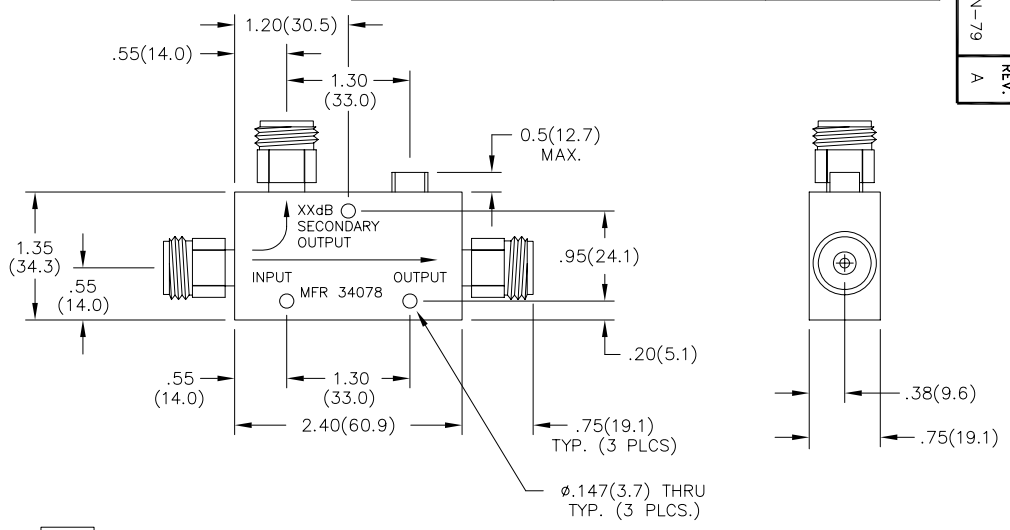
MODEL NUMBER  
CPL-5212-XX-NNN-79  
REV.  
A

- NOTES:
- 1.0 ELECTRICAL SPECIFICATIONS:
    - 1.1 FREQUENCY RANGE: 2.0 to 4.0 GHz
    - 1.2 FREQ. SENSITIVITY: SEE CHART
    - 1.3 COUPLING: SEE TABLE
    - 1.4 VSWR (MAX): 1.25:1
    - 1.5 INSERTION LOSS (EXC. COUPLED POWER): 0.30dB MAX.
    - 1.6 DIRECTIVITY: 20dB MIN.
    - 1.7 POWER: SEE TABLE
    - 1.8 RF IMPEDANCE: 50 OHMS
    - 1.9 WEIGHT (MAX.): 6.8 oz.

CPL-5212-30-NNN-79	30dB	±0.75dB	50	50	4,000
CPL-5212-20-NNN-79	20dB	±0.75dB	50	50	4,000
CPL-5212-10-NNN-79	10dB	±0.75dB	50	10	4,000
CPL-5212-06-NNN-79	6dB	±0.60dB	50	4	4,000
CPL-5212-XX-NNN-79 MODEL NUMBER	-XX ±1.0dB COUPLING	FREQUENCY SENSITIVITY	INPUT POWER (WATTS)	REF. POWER (WATTS)	PEAK POWER (WATTS)

- 2.0 FINISHING:
  - 2.1 GREY OVER MIL-E-15090 TYPE II, CLASS 2  
OVER MIL-C-5541 CLASS 3A  
MEETS MIL-F-14072  
MEETS MIL-E-5400 AND MIL-E-16400V.
  - 2.2 MARK UNIT AS SHOWN.  
(REF.: SLK-08029-82-[28-31])

3.0 DIMENSIONS IN PARENTHESIS  
ARE IN MILLIMETERS.



UNLESS OTHERWISE NOTED DIMENSIONS ARE IN INCHES AND TOLERANCES ARE:	FSCM NO. 34078		MIDWEST MICROWAVE	
	NOTICE: The information contained in this drawing is proprietary and must not be used without the permission of Midwest Microwave			
3 PLACE DECIMALS ±.005	TITLE: DIRECTIONAL COUPLER			
2 PLACE DECIMALS ±.02	DRAWING NUMBER: CPL-5212-XX-NNN-79			
FRACTIONS ±1/64	SCALE: 1=1 SHEET 1 of 1			
PARALLELITY: T.J.R. _____	DRAWN/DATE: J.VERNON 1/20/98	ENG./DATE: J.O'NEIL 2/17/98		
FLATNESS: T.J.R. _____	CHECKED/DATE: _____	APPROVED/DATE: _____		
CONCENTRICITY: T.J.R. _____	ANGLES AND PERPENDICULARITY: ±1°			

DATE	DESCRIPTION	REV.
2/23/98	RELEASED	1
4/14/05	ADDED TITLER/LOCK	T
5/9/06	ECN 20846	A