

Excellent Integrated System Limited

Stocking Distributor

Click to view price, real time Inventory, Delivery & Lifecycle Information:

[Cinch Connectivity Solutions](#)

[CPL-5213-06-NNN-79](#)

For any questions, you can email us directly:

sales@integrated-circuit.com

NOTES:

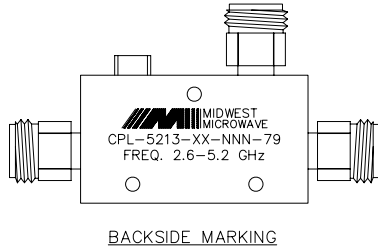
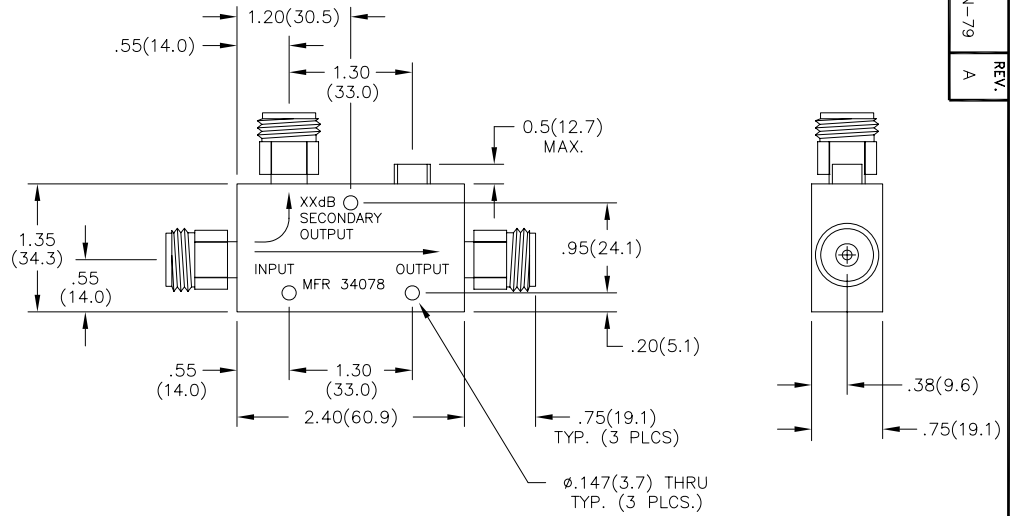
- 1.0 ELECTRICAL SPECIFICATIONS:
 - 1.1 FREQUENCY RANGE: 2.6 to 5.2 GHz
 - 1.2 FREQ. SENSITIVITY: ± 0.75 dB
 - 1.3 COUPLING: SEE TABLE
 - 1.4 VSWR (MAX): 1.30:1
 - 1.5 INSERTION LOSS (EXC. COUPLED POWER): 0.35dB MAX.
 - 1.6 DIRECTIVITY: 18dB MIN.
 - 1.7 POWER: SEE TABLE
 - 1.8 RF IMPEDANCE: 50 OHMS
 - 1.9 WEIGHT (MAX.): 6.8 oz.

2.0 FINISHING:

- 2.1 GREY OVER MIL-E-15090 TYPE II, CLASS 2 OVER MIL-C-5541 CLASS 3A MEETS MIL-F-14072 MEETS MIL-E-5400 AND MIL-E-16400V.
- 2.2 MARK UNIT AS SHOWN. (REF.: SLK-08029-82-[32-35])

3.0 DIMENSIONS IN PARENTHESIS ARE IN MILLIMETERS.

CPL-5213-30-NNN-79	30dB	50	50	4,000
CPL-5213-20-NNN-79	20dB	50	50	4,000
CPL-5213-10-NNN-79	10dB	50	10	4,000
CPL-5213-06-NNN-79	6dB	50	4	4,000
CPL-5213-XX-NNN-79 MODEL NUMBER	-XX ± 1.0 dB COUPLING	INPUT POWER (WATTS)	REF. POWER (WATTS)	PEAK POWER (WATTS)



BACKSIDE MARKING

MODEL NUMBER
CPL-5213-XX-NNN-79
REV.
A

DATE	DESCRIPTION	REV.
2/23/98	RELEASED	1
4/15/05	ADDED TITLER/LOCK	T
5/9/06	ECN 20845	A

UNLESS OTHERWISE NOTED DIMENSIONS ARE IN INCHES AND TOLERANCES ARE: 3 PLACE DECIMALS $\pm .005$ 2 PLACE DECIMALS $\pm .02$ FRACTIONS $\pm 1/64$ PARALLELITY: T.I.R. _____ FLATNESS: T.I.R. _____ CONCENTRICITY: T.I.R. _____ ANGLES AND PERPENDICULARITY: $\pm 1^\circ$	FSCM NO. 34078	MIDWEST MICROWAVE
	NOTICE: The information contained in this drawing is proprietary and must not be used without the permission of Midwest Microwave	
TITLE DIRECTIONAL COUPLER		DRAWING NUMBER CPL-5213-XX-NNN-79
DRAWN/DATE J. VERNON 1/20/98		ENG./DATE J.O'NEIL 2/17/98
CHECKED/DATE		APPROVED/DATE
SCALE: 1=1		SHEET 1 of 1