

Excellent Integrated System Limited

Stocking Distributor

Click to view price, real time Inventory, Delivery & Lifecycle Information:

[Cinch Connectivity Solutions](#)

[CPL-5215-10-NNN-79](#)

For any questions, you can email us directly:

sales@integrated-circuit.com

NOTES:

1.0 ELECTRICAL SPECIFICATIONS:

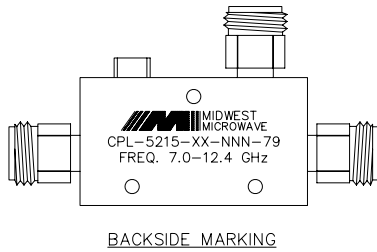
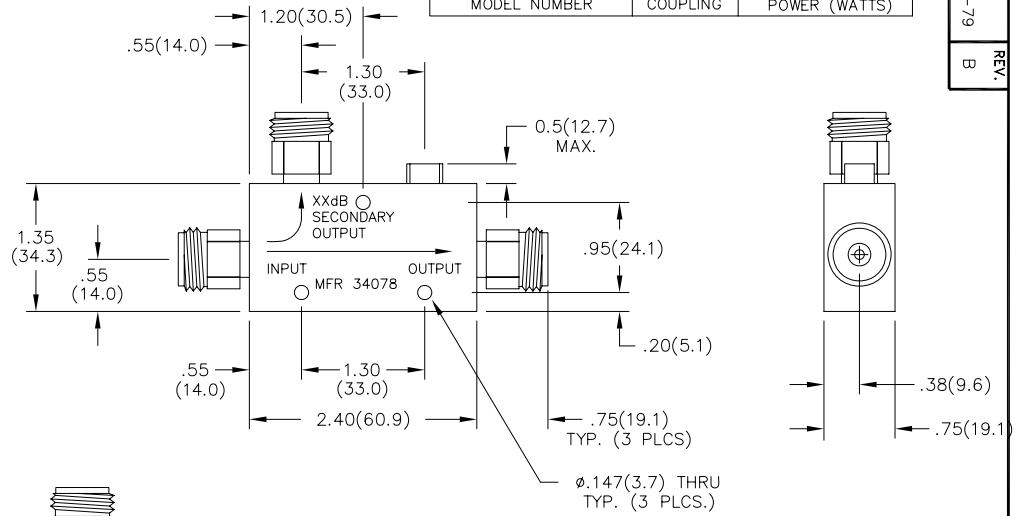
- 1.1 FREQUENCY RANGE: 7.0 to 12.4 GHz
- 1.2 FREQ. SENSITIVITY: ± 0.75 dB
- 1.3 COUPLING: SEE TABLE
- 1.4 VSWR (MAX): 1.50:1
- 1.5 INSERTION LOSS (EXC. COUPLED POWER): 0.55dB MAX.
- 1.6 DIRECTIVITY: 15dB MIN.
- 1.7 POWER: SEE TABLE
- 1.8 RF IMPEDANCE: 50 OHMS
- 1.9 WEIGHT (MAX.): 6.8 oz.

2.0 FINISHING:

- 2.1 GREY OVER MIL-E-15090 TYPE II, CLASS 2 OVER MIL-C-5541 CLASS 3A MEETS MIL-F-14072 MEETS MIL-E-5400 AND MIL-E-16400V.
- 2.2 MARK UNIT AS SHOWN. (REF.: SLK-08029-82-[24-27])

3.0 DIMENSIONS IN PARENTHESIS ARE IN MILLIMETERS.

CPL-5215-30-NNN-79	30dB	50	50	3,000
CPL-5215-20-NNN-79	20dB	50	50	3,000
CPL-5215-10-NNN-79	10dB	50	10	3,000
CPL-5215-06-NNN-79	6dB	50	4	3,000
CPL-5215-XX-NNN-79 MODEL NUMBER	-XX ± 1.0 dB COUPLING	INPUT POWER (WATTS)	REF.	PEAK



UNLESS OTHERWISE NOTED DIMENSIONS ARE IN INCHES AND TOLERANCES ARE:

3 PLACE DECIMALS $\pm .005$
2 PLACE DECIMALS $\pm .02$
FRACTIONS $\pm 1/64$

PARALLELITY: T.I.R. _____
FLATNESS: T.I.R. _____
CONCENTRICITY: T.I.R. _____
ANGLES AND PERPENDICULARITY: $\pm 1'$

FSCM NO.
34078

MIDWEST MICROWAVE

NOTICE: The information contained in this drawing is proprietary and must not be used without the permission of Midwest Microwave

TITLE
DIRECTIONAL COUPLER

DRAWN/DATE
J. VERNON
8/28/97

ENG./DATE
J. O'NEIL
10/13/97

DRAWING NUMBER
CPL-5215-XX-NNN-79

CHECKED/DATE

APPROVED/DATE

SCALE: 1=1 SHEET 1 of 1

MODEL NUMBER
CPL-5215-XX-NNN-79
REV.
B

REV.	DESCRIPTION	DATE
1	RELEASED	10/13/97
A	ECN 16439	1/16/98
A1	ADDED TITLEBLOCK	4/20/02
B	ECN 20843	5/9/06