

Excellent Integrated System Limited

Stocking Distributor

Click to view price, real time Inventory, Delivery & Lifecycle Information:

[Cinch Connectivity Solutions](#)

[CPL-5230-10-NNN-79](#)

For any questions, you can email us directly:

sales@integrated-circuit.com

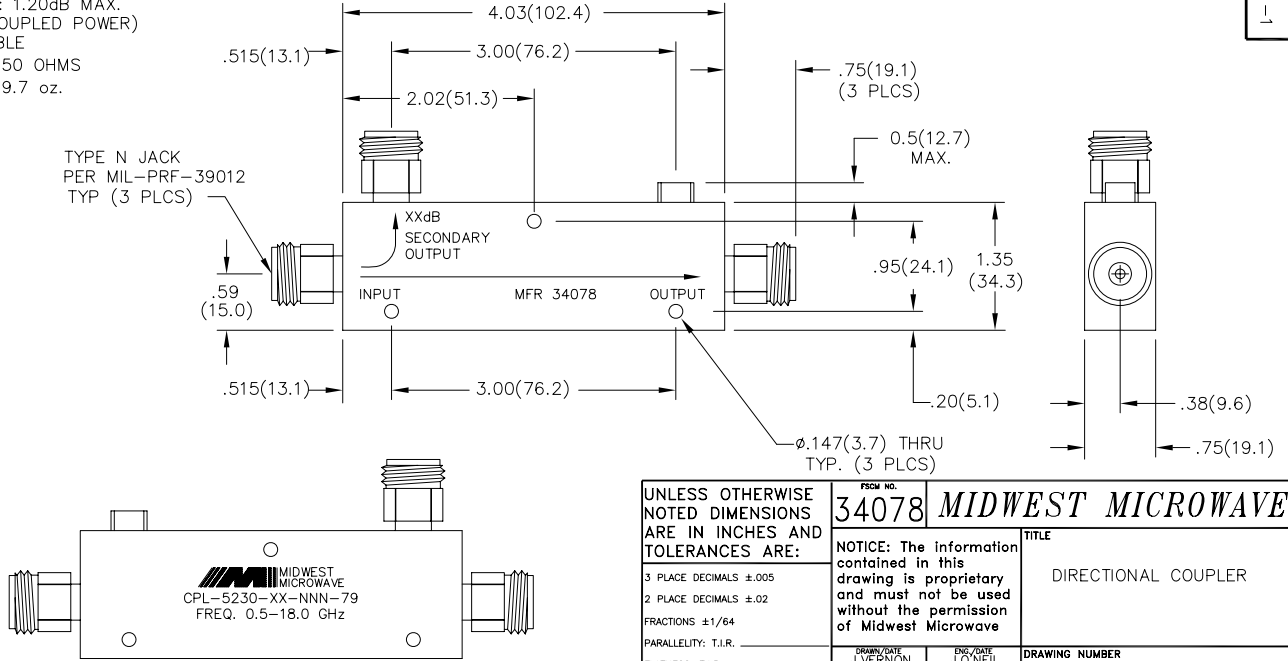
NOTES:
 1.0 ELECTRICAL SPECIFICATIONS:
 1.1 FREQUENCY RANGE: 0.5 to 18.0 GHz
 1.2 COUPLING: (MEASURED WITH RESPECT TO OUTPUT) SEE TABLE
 1.3 FREQUENCY SENSITIVITY: ± 1.10 dB
 1.4 DIRECTIVITY: 0.5 to 12.4 GHz 15dB MIN. 12.4 to 18.0 GHz 12dB MIN.
 1.5 VSWR (MAX): 1.50:1 PRIMARY 1.60:1 SECONDARY
 1.6 INSERTION LOSS: 1.20dB MAX. (EXCLUDING COUPLED POWER)
 1.7 POWER: SEE TABLE
 1.8 RF IMPEDANCE: 50 OHMS
 1.9 WEIGHT (MAX.): 9.7 oz.

2.0 FINISHING:
 2.1 GREY PER MIL-E-15090 TYPE II, CLASS 2 OVER MIL-C-5541 CLASS 3A MEETS MIL-F-14072 MEETS MIL-E-5400
 2.2 MARKING: MARK UNIT AS SHOWN (REF.: SLK-08029-82-[48-50])

3.0 DIMENSIONS IN PARENTHESIS ARE IN MILLIMETERS.

MIDWEST MODEL NUMBER CPL-5230-XX-NNN-79	NOMINAL COUPLING	POWER (WATTS)		
		INPUT	REF	PEAK
CPL-5230-10-NNN-79	10 ± 1.5 dB	50	10	3000
CPL-5230-16-NNN-79	16 ± 1.5 dB	50	40	3000
CPL-5230-20-NNN-79	20 ± 1.5 dB	50	50	3000

MODEL NUMBER
CPL-5230-XX-NNN-79
REV. 1



UNLESS OTHERWISE NOTED DIMENSIONS ARE IN INCHES AND TOLERANCES ARE: 3 PLACE DECIMALS $\pm .005$ 2 PLACE DECIMALS $\pm .02$ FRACTIONS $\pm 1/64$	PSCM NO. 34078		MIDWEST MICROWAVE
	NOTICE: The information contained in this drawing is proprietary and must not be used without the permission of Midwest Microwave		
PARALLELITY: T.J.R. _____ FLATNESS: T.J.R. _____ CONCENTRICITY: T.J.R. _____ ANGLES AND PERPENDICULARITY: $\pm 1'$	DRAWN/DATE J.VERNON 1/21/98	ENG./DATE J.O'NEIL 2/18/98	DRAWING NUMBER CPL-5230-XX-NNN-79
	CHECKED/DATE	APPROVED/DATE	SCALE: 2=1 SHEET 1 of 1

REV.	DESCRIPTION	DATE
1	RELEASED	2/23/98
T	ADDED TITLER/LOCK	4/25/05