

## Excellent Integrated System Limited

Stocking Distributor

Click to view price, real time Inventory, Delivery & Lifecycle Information:

[Cinch Connectivity Solutions](#)

[CPL-5230-16-NNN-79](#)

For any questions, you can email us directly:

[sales@integrated-circuit.com](mailto:sales@integrated-circuit.com)

NOTES:

1.0 ELECTRICAL SPECIFICATIONS:

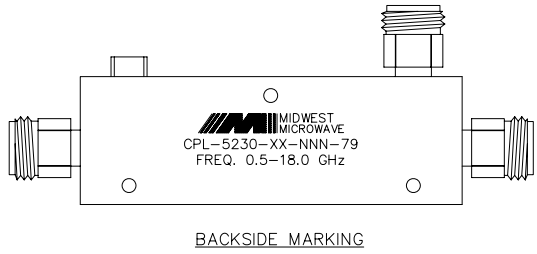
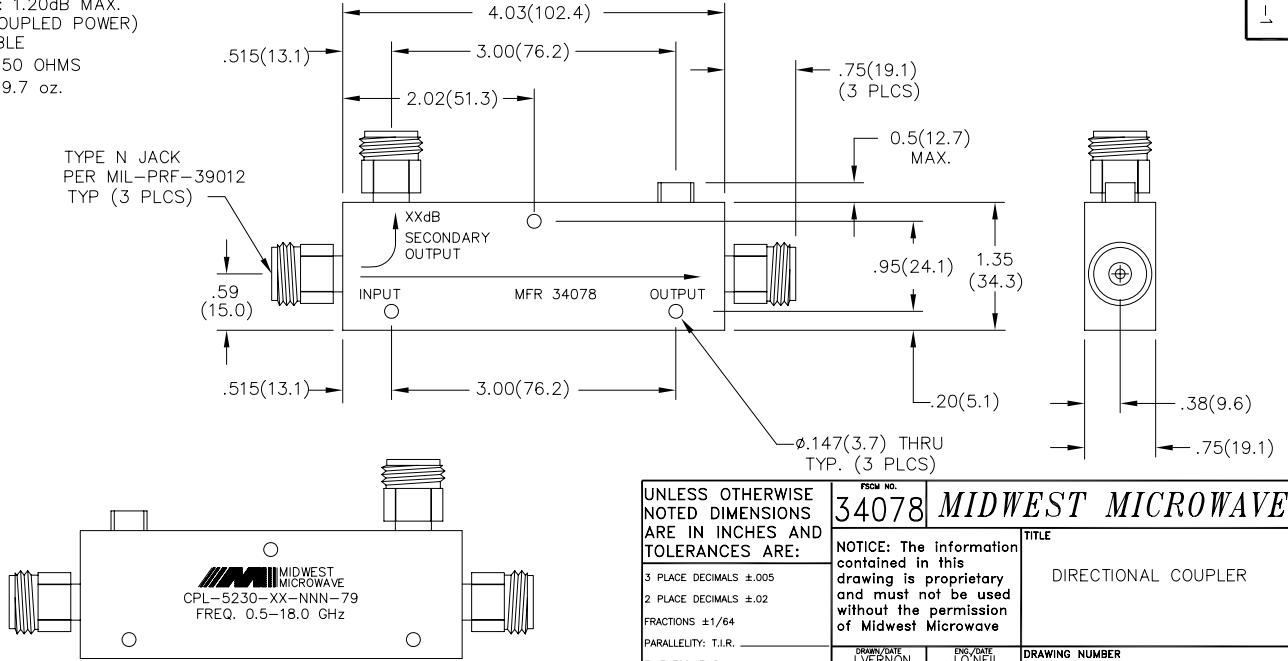
- 1.1 FREQUENCY RANGE: 0.5 to 18.0 GHz
- 1.2 COUPLING: (MEASURED WITH RESPECT TO OUTPUT) SEE TABLE
- 1.3 FREQUENCY SENSITIVITY:  $\pm 1.10$ dB
- 1.4 DIRECTIVITY: 0.5 to 12.4 GHz 15dB MIN.  
12.4 to 18.0 GHz 12dB MIN.
- 1.5 VSWR (MAX): 1.50:1 PRIMARY  
1.60:1 SECONDARY
- 1.6 INSERTION LOSS: 1.20dB MAX.  
(EXCLUDING COUPLED POWER)
- 1.7 POWER: SEE TABLE
- 1.8 RF IMPEDANCE: 50 OHMS
- 1.9 WEIGHT (MAX.): 9.7 oz.

2.0 FINISHING:

- 2.1 GREY PER MIL-E-15090 TYPE II, CLASS 2  
OVER MIL-C-5541 CLASS 3A  
MEETS MIL-F-14072  
MEETS MIL-E-5400
- 2.2 MARKING: MARK UNIT AS SHOWN  
(REF.: SLK-08029-82-[48-50])

3.0 DIMENSIONS IN PARENTHESIS ARE IN MILLIMETERS.

MIDWEST MODEL NUMBER CPL-5230-XX-NNN-79	NOMINAL COUPLING	POWER (WATTS)		
		INPUT	REF	PEAK
CPL-5230-10-NNN-79	10 $\pm 1.5$ dB	50	10	3000
CPL-5230-16-NNN-79	16 $\pm 1.5$ dB	50	40	3000
CPL-5230-20-NNN-79	20 $\pm 1.5$ dB	50	50	3000



UNLESS OTHERWISE NOTED DIMENSIONS ARE IN INCHES AND TOLERANCES ARE:

- 3 PLACE DECIMALS  $\pm .005$
- 2 PLACE DECIMALS  $\pm .02$
- FRACTIONS  $\pm 1/64$
- PARALLELITY: T.J.R. \_\_\_\_\_
- FLATNESS: T.J.R. \_\_\_\_\_
- CONCENTRICITY: T.J.R. \_\_\_\_\_
- ANGLES AND PERPENDICULARITY:  $\pm 1'$

PSCN NO. 34078		MIDWEST MICROWAVE	
NOTICE: The information contained in this drawing is proprietary and must not be used without the permission of Midwest Microwave		TITLE: DIRECTIONAL COUPLER	
DRAWN/DATE: J.VERNON 1/21/98	ENG./DATE: J.O'NEIL 2/18/98	DRAWING NUMBER: CPL-5230-XX-NNN-79	
CHECKED/DATE:	APPROVED/DATE:	SCALE: 2=1	SHEET 1 of 1

MODEL NUMBER: CPL-5230-XX-NNN-79  
REV: 1

REV.	DESCRIPTION	DATE
1	RELEASED	2/23/98
T	ADDED TITLER/LOCK	4/25/05