

Excellent Integrated System Limited

Stocking Distributor

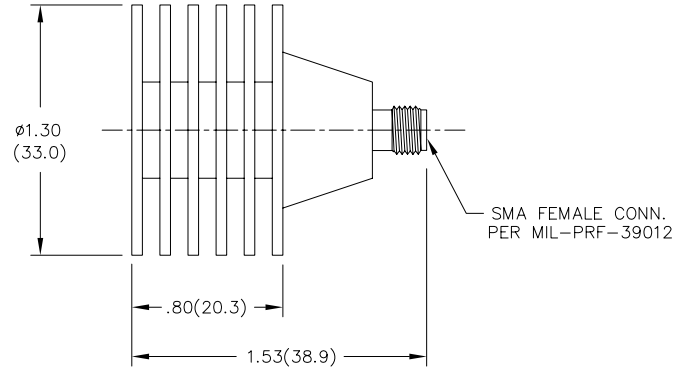
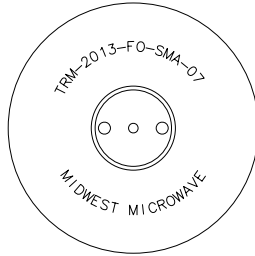
Click to view price, real time Inventory, Delivery & Lifecycle Information:

[Cinch Connectivity Solutions](#)
[TRM-2013-F0-SMA-07](#)

For any questions, you can email us directly:
sales@integrated-circuit.com

NOTES:

- 1.0 ELECTRICAL SPECIFICATIONS:
 - 1.1 FREQUENCY RANGE: DC to 18.0 GHz
 - 1.2 MAXIMUM INPUT POWER: 10 WATTS AVG. AT +40°C DERATED LINEARLY TO 1 WATT AT +125°C
 - 1.3 OPERATING TEMP. RANGE: -55°C to +125°C
 - 1.4 IMPEDANCE: 50 OHMS
 - 1.5 MAXIMUM VSWR: 1.05 +0.01f(GHz)
- 2.0 MARKING: MARK UNIT AS SHOWN. (REF.: INK-01526-27-07)
- 3.0 DIMENSIONS IN PARENTHESIS ARE IN MILLIMETERS.



MODEL NUMBER
TRM-2013-F0-SMA-07
REV.
A1

REV.	DESCRIPTION	DATE
-	RELEASED	3/25/92
A	ECN 15506	9/23/96
A1	ADDED TITLEBLOCK	10/28/05

UNLESS OTHERWISE NOTED DIMENSIONS ARE IN INCHES AND TOLERANCES ARE: 3 PLACE DECIMALS ±.005 2 PLACE DECIMALS ±.02 FRACTIONS ±1/64 PARALLELITY: T.I.R. _____ FLATNESS: T.I.R. _____ CONCENTRICITY: T.I.R. _____ ANGLES AND PERPENDICULARITY: ±1'	FORM NO. 34078	MIDWEST MICROWAVE
	NOTICE: The information contained in this drawing is proprietary and must not be used without the permission of Midwest Microwave	
TITLE TERMINATION		DRAWING NUMBER TRM-2013-F0-SMA-07
DRAWN/DATE A. BEATTY 3/17/92		ENG/DATE G. KOZAK 3/25/92
CHECKED/DATE		APPROVED/DATE
SCALE: 2=1		SHEET 1 of 1