

Excellent Integrated System Limited

Stocking Distributor

Click to view price, real time Inventory, Delivery & Lifecycle Information:

[Bel Fuse Inc.](#)
[M3933/14-24N](#)

For any questions, you can email us directly:
sales@integrated-circuit.com

NOTES:

1.0 SPECIFICATIONS:

- 1.1 FREQUENCY RANGE: DC to 12.4
- 1.2 IMPEDANCE: 50 OHMS NOMINAL
- 1.3 VSWR MAX.:
DC to 4.0 GHz: 1.15:1
4.0 to 8.0 GHz: 1.20:1
8.0 to 12.4 GHz: 1.25:1
- 1.4 ATTENUATION & ACCURACY: SEE TABLE
- 1.5 MAXIMUM INPUT POWER
1.5.1 2 WATTS AVG. AT +25°C DERATED LINEARLY TO 0.5 WATTS AT +125°C
1.5.2 200 WATTS PEAK
- 1.6 OPERATING TEMP. RANGE:
-55°C to +125°C
- 1.7 WIEGHT: SEE TABLE

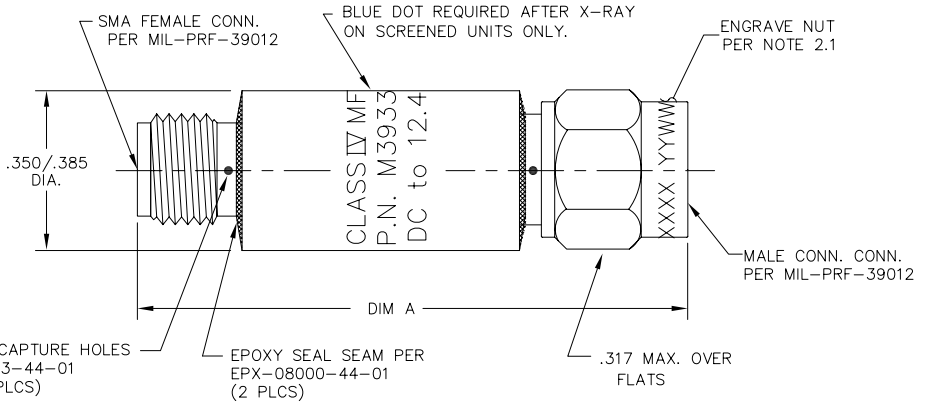
| MMI MODEL NO. | ATTEN. (dB) | DEVIATION DC to 12.4 GHz | WEIGHT Oz. MAX. | DIM A MAX. | MMI MODEL NO. | ATTEN. (dB) | DEVIATION DC to 12.4 GHz | WEIGHT Oz. MAX. | DIM A MAX. |
|---------------|-------------|--------------------------|-----------------|------------|---------------|-------------|--------------------------|-----------------|------------|
| M3933/14-XX | 3 | ±0.3 | 0.5 | 1.24 | M3933/14-11 | 8 | ±0.4 | 0.5 | 1.24 |
| M3933/14-01 | 3 | ±0.3 | 0.5 | 1.24 | M3933/14-12 | 9 | ±0.4 | 0.5 | 1.24 |
| M3933/14-02 | 6 | ±0.3 | 0.5 | 1.24 | M3933/14-13 | 30 | ±0.9 | 0.8 | 1.85 |
| M3933/14-03 | 10 | ±0.3 | 0.5 | 1.24 | M3933/14-14 | 40 | ±0.9 | 0.8 | 1.85 |
| M3933/14-04 | 20 | ±0.5 | 0.5 | 1.24 | M3933/14-17 | 28 | ±0.9 | 0.7 | 1.85 |
| M3933/14-05 | 15 | ±0.5 | 0.5 | 1.24 | M3933/14-18 | 16 | ±0.5 | 0.5 | 1.24 |
| M3933/14-06 | 1 | ±0.3 | 0.5 | 1.24 | M3933/14-19 | 14 | ±0.5 | 0.5 | 1.24 |
| M3933/14-07 | 2 | ±0.3 | 0.5 | 1.24 | M3933/14-20 | 13 | ±0.5 | 0.5 | 1.24 |
| M3933/14-08 | 4 | ±0.3 | 0.5 | 1.24 | M3933/14-21 | 12 | ±0.5 | 0.5 | 1.24 |
| M3933/14-09 | 5 | ±0.3 | 0.5 | 1.24 | M3933/14-22 | 11 | ±0.5 | 0.5 | 1.24 |
| M3933/14-10 | 7 | ±0.4 | 0.5 | 1.24 | M3933/14-23 | 1.5 | ±0.3 | 0.5 | 1.24 |
| | | | | | M3933/14-24 | 31 | ±0.9 | 0.8 | 1.85 |

2.0 MARKING:

- 2.1 ENGRAVE SERIAL NO. AND DATE CODE ON NUT AS SHOWN.
- 2.2 MARK BODY AS SHOWN. (REF.: INK-09252-27-XX)

3.0 TESTING:

TEST IN CONJUNCTION WITH
ATP-07839-60-01 FOR SCREENED UNITS.
ATP-09210-60-01 FOR NON-SCREENED UNITS.



4.0 BAG MARKING:

SEE MODEL NO. FOR LAST 3 DIGITS
MODEL M3933/14-YYY
ATTENUATOR FIXED COAXIAL LINE
2 WATTS AVERAGE INPUT POWER
FREQ. RANGE: DC-12.4 GHz
MFR 34078
LOT NO. _____
DATE CODE: YYYW YEAR & WEEK

| | | | |
|--|---|---------------------------------------|---------------------------------|
| UNLESS OTHERWISE NOTED DIMENSIONS ARE IN INCHES AND TOLERANCES ARE: | FSCM NO. | 34078 | MIDWEST MICROWAVE |
| | NOTICE: The information contained in this drawing is proprietary and must not be used without the permission of Midwest Microwave | | |
| 3 PLACE DECIMALS ±.005 2 PLACE DECIMALS ±.02 FRACTIONS ±1/64 PARALLELITY: T.I.R. FLATNESS: T.I.R. CONCENTRICITY: T.I.R. ANGLES AND PERPENDICULARITY: ±1° | DRAWN/DATE A. BEATTY 4/8/94 | | ENG/DATE G. KOZAK 4/18/94 |
| TITLE ATTENUATOR | | DRAWING NUMBER M3933/14-XX(N or S) | |
| CHECKED/DATE M. HOLLMAN 4/15/94 | | APPROVED/DATE | |
| SCALE: 5=1 | | SHEET 1 of 1 | |

| REV. | DESCRIPTION | DATE |
|------|-----------------|----------|
| I | RELEASED | 5/30/89 |
| A | ECR 7780 | 11/15/90 |
| B | ECR 7880 | 1/16/91 |
| C | ECR 10218 | 1/30/91 |
| CI | UPDATE MOD. NO. | 1/25/93 |
| D | ECN 13483 | 4/8/94 |
| E | ECN 14231 | 1/16/95 |
| F | ECN 16867 | 2/3/98 |
| G | ECN 18865 | 12/12/02 |
| H | ECN 20764 | 3/10/06 |
| J | ECN 21462 | 8/17/07 |