

## Excellent Integrated System Limited

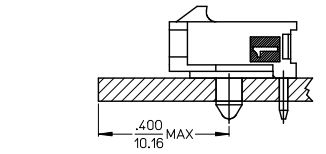
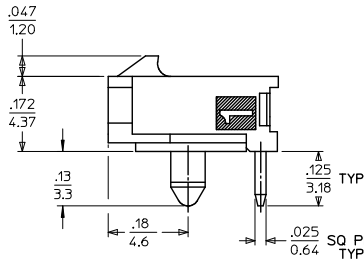
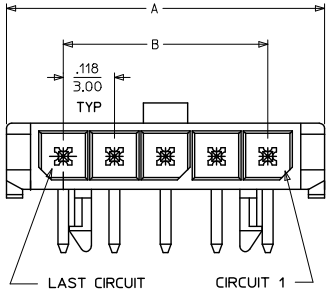
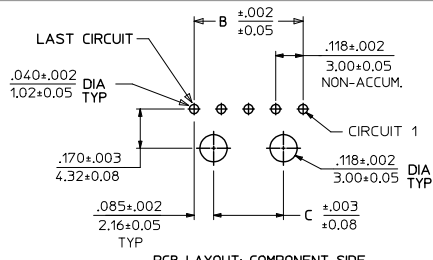
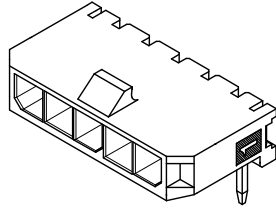
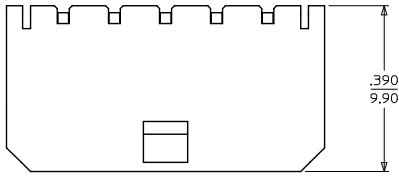
Stocking Distributor

Click to view price, real time Inventory, Delivery & Lifecycle Information:

[Molex Connector Corporation](#)  
[43650-0900](#)

For any questions, you can email us directly:

[sales@integrated-circuit.com](mailto:sales@integrated-circuit.com)



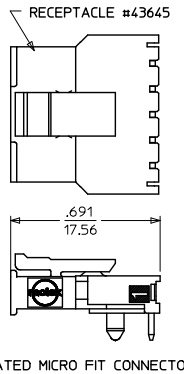
LOCATION DETAIL (SEE NOTE #6)

NOTES:

- HOUSING MATERIAL: LIQUID CRYSTAL POLYMER, GLASS FILLED, UL94V-0, COLOR - BLACK  
TERMINAL MATERIAL: BRASS ALLOY
- FINISH:
  - A = .000060/(0.00152) MIN. REFLOWED MATTE TIN OVER .000050/(0.00127) MIN. NICKEL (FINISH IS BRIGHT IN APPEARANCE, THICKNESS AS APPLIED PRIOR TO REFLOW)
  - B = .000015/(0.00038) MIN. SELECT GOLD IN CONTACT AREA .000100/(0.00254) MIN. SELECT MATTE TIN ON SOLDER TAILS BOTH OVER .000050/(0.00127) NICKEL OVERALL
  - C = .000030/(0.00076) MIN. SELECT GOLD IN CONTACT AREA .000100/(0.00254) MIN. SELECT MATTE TIN ON SOLDER TAILS BOTH OVER .000050/(0.00127) NICKEL OVERALL
  - D = .000100/(0.00254) MIN. MATTE TIN OVER .000050/(0.00127) MIN. NICKEL
- PRODUCT SPECIFICATION: PS-43650
- TRAY PACKAGED : SEE MOLEX DRAWING PK-70873-0321
- MATES WITH MICRO FIT (3.0) RECEPTACLE SERIES 43645
- TO AVOID INTERFERENCE BETWEEN RECEPTACLE AND PCB, HEADER MUST BE PLACED WITHIN .400/(10.16) MAX. FROM EDGE OF PCB, AS SHOWN IN LOCATION DETAIL.
- PARTS CONFORM TO CLASS 'B' REQUIREMENTS OF COSMETIC SPECIFICATION PS-45499-002

CKTS	FINISH A		FINISH B		FINISH C		FINISH D	
	MATERIAL NO:	VOID CKT#	MATERIAL NO:	VOID CKT#	MATERIAL NO:	VOID CKT#	MATERIAL NO:	VOID CKT#
02	43650-0200	N/A	43650-0201	N/A	43650-0202	N/A	43650-0237	
03	43650-0300	N/A	43650-0301	N/A	43650-0302	N/A		
04	43650-0400	N/A	43650-0401	N/A	43650-0402	N/A		
05	43650-0500	N/A	43650-0501	N/A	43650-0502	N/A		
06	43650-0600	N/A	43650-0601	N/A	43650-0602	N/A		
07	43650-0700	N/A	43650-0701	N/A	43650-0702	N/A		
08	43650-0800	N/A	43650-0801	N/A	43650-0802	N/A		
09	43650-0900	N/A	43650-0901	N/A	43650-0902	N/A		
10	43650-1000	N/A	43650-1001	N/A	43650-1002	N/A		
11	43650-1100	N/A	43650-1101	N/A	43650-1102	N/A		
12	43650-1200	N/A	43650-1201	N/A	43650-1202	N/A		
03	43650-1300	2						
05								
09	43650-1900	2,4,5	43650-1901	2,4,6,8	43650-1502	2,3,4		

CKTS	A			B			C		
2	.380	.118	NA	9.65	3.00	NA			
3	.498	.236	NA	12.65	6.00	NA			
4	.616	.354	.185	15.65	9.00	4.70			
5	.734	.472	.303	18.64	12.00	7.70			
6	.852	.591	.421	21.64	15.00	10.70			
7	.970	.709	.539	24.64	18.00	13.70			
8	1.088	.827	.657	27.64	21.00	16.70			
9	1.206	.945	.776	30.63	24.00	19.70			
10	1.325	1.063	.894	33.66	27.00	22.70			
11	1.443	1.181	1.012	36.65	30.00	25.70			
12	1.561	1.299	1.130	39.65	33.00	28.70			



REVISE FINISH A REC NO: UCP2016-2946 DRWNGAPPELLDWN 2016/01/28 CHKCD:JDOX 2016/01/28 APPROV:SMITH 2016/03/18 DESCRIPTION:	QUALITY SYMBOLS	GENERAL TOLERANCES (UNLESS SPECIFIED)	DIMENSION STYLE IN/MM	SCALE ---	DESIGN UNITS METRIC	THIRD ANGLE PROJECTION	
	4 PLACES ± --- INCH 3 PLACES ± --- INCH 2 PLACES ± 0.25 ± 0.10 INCH 1 PLACE ± 0.35 ± --- INCH 0 PLACE ± --- INCH	DRAWN BY SAMIEC DATE 2000/07/07 CHECKED BY DATE APPROVED BY FSMITH DATE 2016/03/18	ANGULAR ±1/2° DRAFT WHERE APPLICABLE MUST REMAIN WITHIN DIMENSIONS	MATERIAL NO. SEE CHART DOCUMENT NO. SD-43650-001	TITLE MICRO-FIT (3.0) SINGLE ROW / RIGHT ANGLE THRU HOLE / PEGS / TRAY	SHEET NO. 1 OF 1	THIS DRAWING CONTAINS INFORMATION THAT IS PROPRIETARY TO MOLEX INCORPORATED AND SHOULD NOT BE USED WITHOUT WRITTEN PERMISSION
	D6	SIZE C	SEE CHART	SD-43650-001	molex	1 OF 1	THIS DRAWING CONTAINS INFORMATION THAT IS PROPRIETARY TO MOLEX INCORPORATED AND SHOULD NOT BE USED WITHOUT WRITTEN PERMISSION
	REV	SIZE C	SEE CHART	SD-43650-001	molex	1 OF 1	THIS DRAWING CONTAINS INFORMATION THAT IS PROPRIETARY TO MOLEX INCORPORATED AND SHOULD NOT BE USED WITHOUT WRITTEN PERMISSION