

Excellent Integrated System Limited

Stocking Distributor

Click to view price, real time Inventory, Delivery & Lifecycle Information:

[Molex Connector Corporation](#)
[0430251400](#)

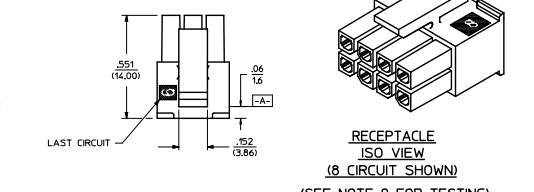
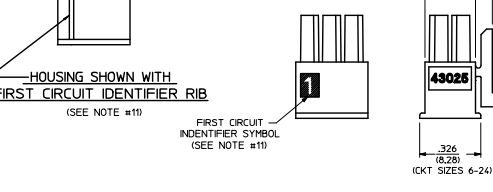
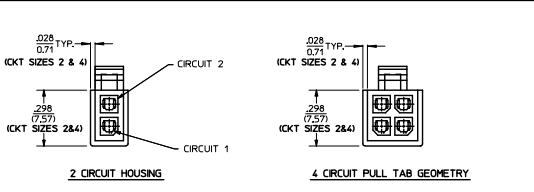
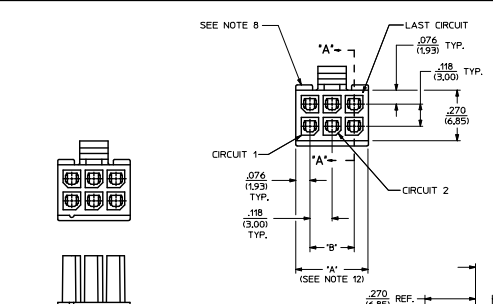
For any questions, you can email us directly:

sales@integrated-circuit.com

20	19	18	17	16	15	14	13	12	11	10	9	8	7	6	5	4	3	2	1
----	----	----	----	----	----	----	----	----	----	----	---	---	---	---	---	---	---	---	---

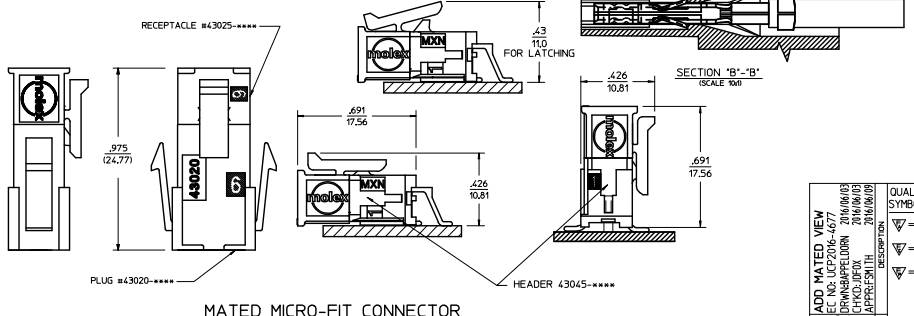
PART CHARACTERISTICS			
NUMBER OF POSITION	ASSEMBLY ITEM NUMBER	MATERIAL	
02	43025-0200	"B"	
04	43025-0400		
06	43025-0600		
08	43025-0800		
10	43025-1000		
12	43025-1200		"A"
14	43025-1400		"B"
16	43025-1600		"A"
18	43025-1800	"B"	
20	43025-2000		
22	43025-2200		
24	43025-2400		"A"

CKT. NO.	DIM. 'A'	DIM. 'B'
2	.152/(3.86)	N/A
4	.270/(6.85)	.118/(3.00)
6	.388/(9.85)	.236/(6.00)
8	.506/(12.85)	.354/(9.00)
10	.624/(15.85)	.472/(12.00)
12	.742/(18.85)	.591/(15.00)
14	.860/(21.85)	.709/(18.00)
16	.978/(24.85)	.827/(21.00)
18	1.096/(27.85)	.945/(24.00)
20	1.215/(30.85)	1.063/(27.00)
22	1.333/(33.85)	1.181/(30.00)
24	1.451/(36.85)	1.299/(33.00)



NOTES

- HOUSING MATERIAL:
 "A" - UNFILLED POLYESTER, RATED UL 94V-0, COLOR IS BLACK.
 "B" - UNFILLED NYLON, RATED UL 94V-0, HALOGEN-FREE, COLOR IS BLACK.
- FINISH: N/A
- PRODUCT SPECIFICATION: PS-43045
- PACKAGING SPECIFICATION: PK-43025-001
- THIS RECEPTACLE MATES WITH 43020, 43045.
- THIS RECEPTACLE TO BE USED WITH MOLEX FEMALE TERMINAL SERIES 43030 OR 46235. SEE SECTION "A"- "A" FOR TERMINAL ORIENTATION IN HOUSING.
- FOR OVERVOLTING PARAMETERS SEE ENGINEERING SPECIFICATION #SDS-43025-1000.
- TOP PULL TABS ARE NOT AVAILABLE ON 2 AND 4 CIRCUIT PARTS.
- MOLEX RECOMMENDS THE USE OF MICRO-FIT TEST PLUG, SERIES NO. 44242-**** WHENEVER TESTING IS PERFORMED. TEST PLUGS MUST NOT BE USED FOR MAKE OR BREAK UNDER LOAD. MOLEX DOES NOT RECOMMEND USING STANDARD MATING COMPONENTS FOR HARNESS TESTING PURPOSES.
- SOME HOUSINGS MAY HAVE A SMALL GATE BLEMISH NEAR THE GATE THAT DOES NOT AFFECT FUNCTIONALITY.
- HOUSINGS HAVE EITHER AN IDENTIFIER RIB OR ENGRAVED "1" SYMBOL TO INDICATE CIRCUIT #1. IDENTIFIER TYPE IS TOOL DEPENDENT AND NOT SELECTABLE.
- THIS PART CONFORMS TO CLASS "B" REQUIREMENTS OF COSMETIC SPECIFICATION PS-45499-002.

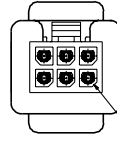
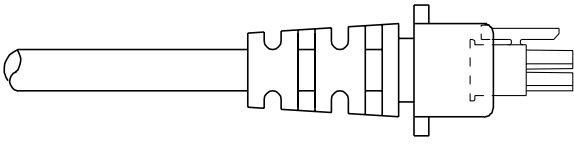


MATED MICRO-FIT CONNECTOR

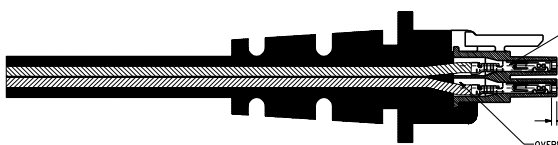
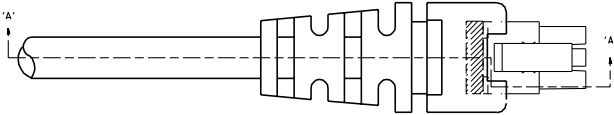
QUALITY SYMBOLS	GENERAL TOLERANCES (UNLESS SPECIFIED)		DIMENSION STYLE		SCALE	DESIGN UNITS	THIRD ANGLE PROJECTION
	mm	INCH	IN/MM	DATE			
∇=0	4 PLACES	±.010	A.F.G.	1993/01/14	MICRO-FIT (3.0) 2 THRU 24 CIRCUIT RECEPTACLE	METRIC	THIRD ANGLE PROJECTION
∇=0	3 PLACES	±.014	B.A.P.	1993/01/14			
∇=0	2 PLACES	±.025	APPROVED BY	DATE			
∇=0	1 PLACE	±.035	FSMITH	2016/05/02			
ANGULAR ±1/2°		SEE CHART		DOCUMENT NO.		SHEET NO.	
DRAFT WHERE APPLICABLE MUST REMAIN WITHIN DIMENSIONS		MATERIAL		SDA-43025-****		1 OF 1	

NOTES:

- 1) OVERMOLDED MATERIAL SHOULD NOT ENCAPSULATE THE TERMINAL IN AND AROUND THE WIRE CRIMP AREA.
- 2) TERMINALS MUST BE CENTERED AND PERPENDICULAR INSIDE THE RECEPTACLE HOUSING BEFORE AND AFTER OVERMOLDING.
- 3) DEVICE USED TO CENTER TERMINALS MUST NOT EXCEED .020 SQUARE IN ORDER TO PREVENT TERMINAL DEFORMATION.
- 4) OVERMOLD TOOLING MUST NOT DAMAGE INTERNAL OR EXTERNAL FEATURES OF CABLE ASSEMBLY.
- 5) THE OVERMOLDING TEMPERATURES DURING PROCESSING MUST NOT EXCEED 328°F
- 6) REMOVAL OF CABLE ASSEMBLY FROM THE TOOLING MUST NOT IN ANY WAY DAMAGE THE SUPPLIED COMPONENTS.
- 7) MOLEX IS RESPONSIBLE ONLY FOR COMPONENTS SUPPLIED TO THE OVERMOLDER, BUT NOT FOR NONCONFORMANCES INDUCED DURING THE OVERMOLDING PROCESS, SUCH AS OVERMOLD MATERIAL IN THE CONTACT AREA, TERMINALS THAT ARE EITHER OUT OF CENTER OR LACK OF TERMINAL MOBILITY AFTER BEING OVERMOLDED, AND ANY DEFORMATION TO TERMINALS OR HOUSINGS IN GENERAL.



TERMINALS MUST BE CENTERED IN RECEPTACLE PRIOR TO OVERMOLDING



TERMINALS SHOULD BE FULLY SEATED (APPROXIMATELY .030/(0.76) FROM TOP OF SILO) BEFORE OVERMOLDING

OVERMOLD MATERIAL SHOULD NOT PROCEED PASS WIRE CRIMP

SECTION "A"- "A"

REVISED PER EOH 15-0175 BAP

REVISED PER EOH 14-0750 BAP

REVISIONS		REVISE ONLY ON CAD SYSTEM	
NO.	DATE	BY	CHKD.
B			
A			

MOLEX INCORPORATED	MOLEX INCORPORATED
1000 N. WILSON AVENUE	1000 N. WILSON AVENUE
AVON, MA 01901	AVON, MA 01901
TEL: 508/833-2000	TEL: 508/833-2000
FAX: 508/833-2001	FAX: 508/833-2001
WWW.MOLEX.COM	WWW.MOLEX.COM

MOLEX INCORPORATED	MOLEX INCORPORATED
1000 N. WILSON AVENUE	1000 N. WILSON AVENUE
AVON, MA 01901	AVON, MA 01901
TEL: 508/833-2000	TEL: 508/833-2000
FAX: 508/833-2001	FAX: 508/833-2001
WWW.MOLEX.COM	WWW.MOLEX.COM