

Excellent Integrated System Limited

Stocking Distributor

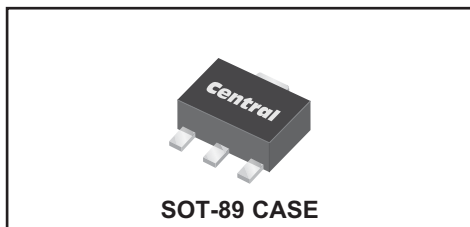
Click to view price, real time Inventory, Delivery & Lifecycle Information:

[Central Semiconductor Corp](#)
[CXT4033 TR](#)

For any questions, you can email us directly:

sales@integrated-circuit.com

CXT4033
SURFACE MOUNT
PNP SILICON TRANSISTOR



www.centrasemi.com

DESCRIPTION:

The CENTRAL SEMICONDUCTOR CXT4033 type is an PNP silicon transistor manufactured by the epitaxial planar process, epoxy molded in a surface mount package, designed for high current general purpose amplifier applications.

MARKING: FULL PART NUMBER

MAXIMUM RATINGS: (T_A=25°C)

Collector-Base Voltage	V _{CBO}	80	V
Collector-Emitter Voltage	V _{CEO}	80	V
Emitter-Base Voltage	V _{EBO}	5.0	V
Continuous Collector Current	I _C	1.0	A
Peak Collector Current	I _{CM}	1.5	A
Power Dissipation	P _D	1.2	W
Operating and Storage Junction Temperature	T _J , T _{stg}	-65 to +150	°C
Thermal Resistance	θ _{JA}	104	°C/W

SYMBOL

V _{CBO}	80
V _{CEO}	80
V _{EBO}	5.0
I _C	1.0
I _{CM}	1.5
P _D	1.2
T _J , T _{stg}	-65 to +150
θ _{JA}	104

UNITS

V
V
V
A
A
W
°C
°C/W

ELECTRICAL CHARACTERISTICS: (T_A=25°C unless otherwise noted)

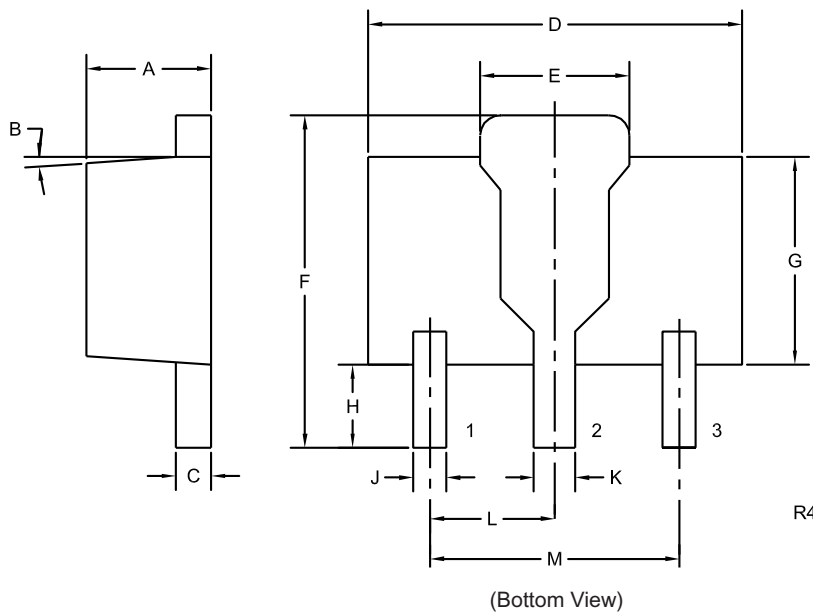
SYMBOL	TEST CONDITIONS	MIN	MAX	UNITS
I _{CBO}	V _{CB} =60V		50	nA
I _{EBO}	V _{EB} =5.0V		10	nA
BV _{CBO}	I _C =10μA	80		V
BV _{CEO}	I _C =10mA	80		V
BV _{EBO}	I _E =10μA	5.0		V
V _{CE(SAT)}	I _C =150mA, I _B =15mA		0.15	V
V _{CE(SAT)}	I _C =500mA, I _B =50mA		0.50	V
V _{BE(SAT)}	I _C =150mA, I _B =15mA		0.90	V
V _{BE(SAT)}	I _C =500mA, I _B =50mA		1.10	V
h _{FE}	V _{CE} =5.0V, I _C =0.1mA	75		
h _{FE}	V _{CE} =5.0V, I _C =100mA	100	300	
h _{FE}	V _{CE} =5.0V, I _C =500mA	70		
h _{FE}	V _{CE} =5.0V, I _C =1.0A	25		
f _T	V _{CE} =10V, I _C =50mA, f=1.0MHz	100		MHz
C _{ob}	V _{CB} =10V, I _E =0, f=1.0MHz		20	pF
C _{ib}	V _{EB} =0.5V, I _C =0, f=1.0MHz		110	pF

CXT4033

SURFACE MOUNT
PNP SILICON TRANSISTOR



SOT-89 CASE - MECHANICAL OUTLINE



LEAD CODE:

- 1) Emitter
- 2) Collector
- 3) Base

MARKING:
FULL PART NUMBER

SYMBOL	DIMENSIONS			
	INCHES		MILLIMETERS	
	MIN	MAX	MIN	MAX
A	0.055	0.067	1.40	1.70
B	4°		4°	
C	0.014	0.018	0.35	0.46
D	0.173	0.185	4.40	4.70
E	0.064	0.074	1.62	1.87
F	0.146	0.177	3.70	4.50
G	0.090	0.106	2.29	2.70
H	0.028	0.051	0.70	1.30
J	0.014	0.019	0.36	0.48
K	0.017	0.023	0.44	0.58
L	0.059		1.50	
M	0.118		3.00	

SOT-89 (REV: R4)

R6 (23-February 2010)

OUTSTANDING SUPPORT AND SUPERIOR SERVICES



PRODUCT SUPPORT

Central's operations team provides the highest level of support to insure product is delivered on-time.

- Supply management (Customer portals)
- Inventory bonding
- Consolidated shipping options
- Custom bar coding for shipments
- Custom product packing

DESIGNER SUPPORT/SERVICES

Central's applications engineering team is ready to discuss your design challenges. Just ask.

- Free quick ship samples (2nd day air)
- Online technical data and parametric search
- SPICE models
- Custom electrical curves
- Environmental regulation compliance
- Customer specific screening
- Up-screening capabilities
- Special wafer diffusions
- PbSn plating options
- Package details
- Application notes
- Application and design sample kits
- Custom product and package development

CONTACT US

Corporate Headquarters & Customer Support Team

Central Semiconductor Corp.
145 Adams Avenue
Hauppauge, NY 11788 USA
Main Tel: (631) 435-1110
Main Fax: (631) 435-1824
Support Team Fax: (631) 435-3388
www.centrasemi.com

Worldwide Field Representatives:
www.centrasemi.com/wwreps

Worldwide Distributors:
www.centrasemi.com/wwdistributors

For the latest version of Central Semiconductor's **LIMITATIONS AND DAMAGES DISCLAIMER**, which is part of Central's Standard Terms and Conditions of sale, visit: www.centrasemi.com/terms