

Excellent Integrated System Limited

Stocking Distributor

Click to view price, real time Inventory, Delivery & Lifecycle Information:

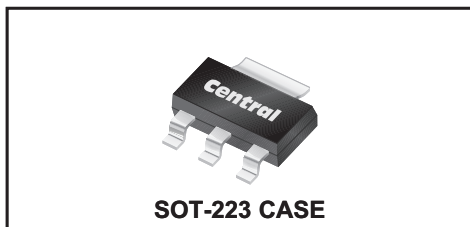
[Central Semiconductor Corp](#)

[CZT5551 TR](#)

For any questions, you can email us directly:

sales@integrated-circuit.com

CZT5551
SURFACE MOUNT SILICON
NPN TRANSISTOR



www.centrasemi.com

DESCRIPTION:

The CENTRAL SEMICONDUCTOR CZT5551 is a silicon NPN transistor manufactured by the epitaxial planar process, epoxy molded in a surface mount package, designed for high voltage amplifier applications.

MARKING: FULL PART NUMBER

MAXIMUM RATINGS: (T_A=25°C)

Collector-Base Voltage
Collector-Emitter Voltage
Emitter-Base Voltage
Continuous Collector Current
Power Dissipation
Operating and Storage Junction Temperature
Thermal Resistance

SYMBOL		UNITS
V _{CB0}	180	V
V _{CEO}	160	V
V _{EBO}	6.0	V
I _C	600	mA
P _D	2.0	W
T _J , T _{stg}	-65 to +150	°C
θ _{JA}	62.5	°C/W

ELECTRICAL CHARACTERISTICS: (T_A=25°C unless otherwise noted)

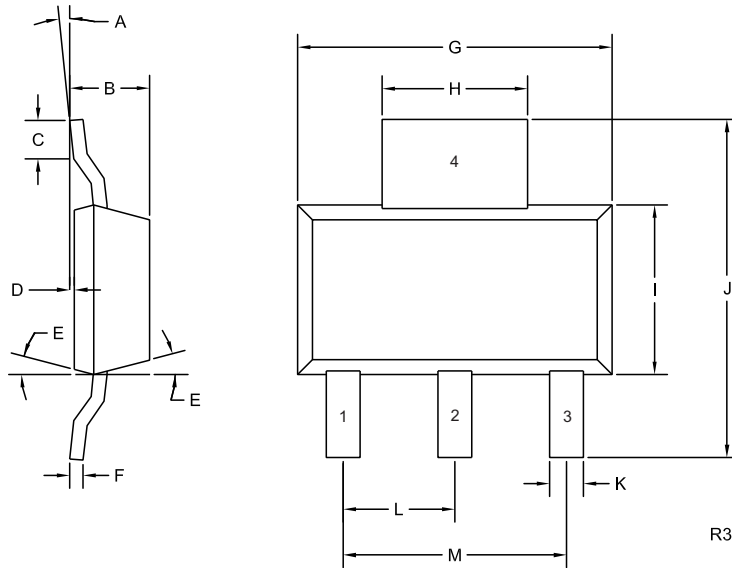
SYMBOL	TEST CONDITIONS	MIN	MAX	UNITS
I _{CB0}	V _{CB} =120V		50	nA
I _{CB0}	V _{CB} =120V, T _A =100°C		50	µA
I _{EBO}	V _{EB} =4.0V		50	nA
BV _{CB0}	I _C =100µA	180		V
BV _{CEO}	I _C =1.0mA	160		V
BV _{EBO}	I _E =10µA	6.0		V
V _{CE(SAT)}	I _C =10mA, I _B =1.0mA		0.15	V
V _{CE(SAT)}	I _C =50mA, I _B =5.0mA		0.20	V
V _{BE(SAT)}	I _C =10mA, I _B =1.0mA		1.00	V
V _{BE(SAT)}	I _C =50mA, I _B =5.0mA		1.00	V
h _{FE}	V _{CE} =5.0V, I _C =1.0mA	80		
h _{FE}	V _{CE} =5.0V, I _C =10mA	80	250	
h _{FE}	V _{CE} =5.0V, I _C =50mA	30		
f _T	V _{CE} =10V, I _C =10mA, f=100MHz	100	300	MHz
C _{ob}	V _{CB} =10V, I _E =0, f=1.0MHz		6.0	pF
C _{ib}	V _{EB} =0.5V, I _C =0, f=1.0MHz		20	pF
h _{fe}	V _{CE} =10V, I _C =1.0mA, f=1.0kHz	50	200	
NF	V _{CE} =5.0V, I _C =200µA, R _S =10Ω, f=10Hz to 15.7kHz		8.0	dB

R5 (11-June 2013)

CZT5551
SURFACE MOUNT SILICON
NPN TRANSISTOR



SOT-223 CASE - MECHANICAL OUTLINE



LEAD CODE:

- 1) Base
- 2) Collector
- 3) Emitter
- 4) Collector

MARKING:
FULL PART NUMBER

SYMBOL	DIMENSIONS			
	INCHES		MILLIMETERS	
	MIN	MAX	MIN	MAX
A	0°	10°	0°	10°
B	0.059	0.071	1.50	1.80
C	0.018	---	0.45	---
D	0.000	0.004	0.00	0.10
E	15°		15°	
F	0.009	0.014	0.23	0.35
G	0.248	0.264	6.30	6.70
H	0.114	0.122	2.90	3.10
I	0.130	0.146	3.30	3.70
J	0.264	0.287	6.70	7.30
K	0.024	0.033	0.60	0.85
L	0.091		2.30	
M	0.181		4.60	

SOT-223 (REV: R3)

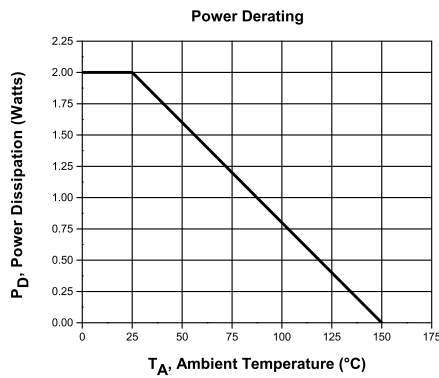
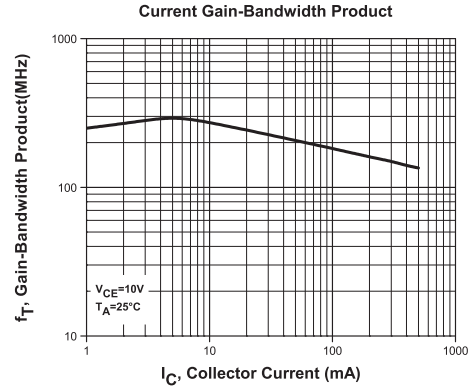
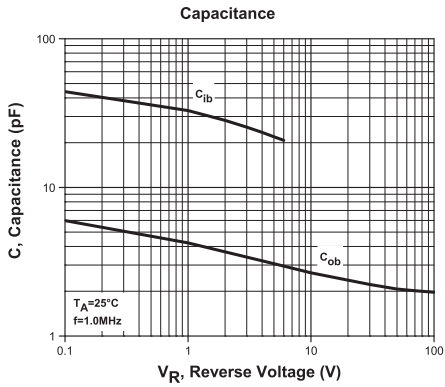
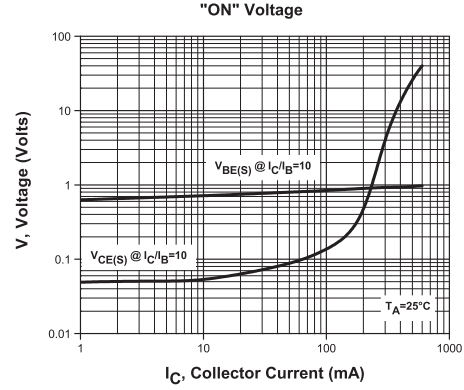
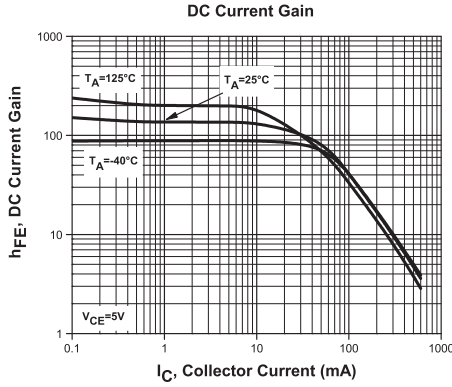
R5 (11-June 2013)

CZT5551

**SURFACE MOUNT SILICON
 NPN TRANSISTOR**



TYPICAL ELECTRICAL CHARACTERISTICS



R5 (11-June 2013)

OUTSTANDING SUPPORT AND SUPERIOR SERVICES



PRODUCT SUPPORT

Central's operations team provides the highest level of support to insure product is delivered on-time.

- Supply management (Customer portals)
- Inventory bonding
- Consolidated shipping options
- Custom bar coding for shipments
- Custom product packing

DESIGNER SUPPORT/SERVICES

Central's applications engineering team is ready to discuss your design challenges. Just ask.

- Free quick ship samples (2nd day air)
- Online technical data and parametric search
- SPICE models
- Custom electrical curves
- Environmental regulation compliance
- Customer specific screening
- Up-screening capabilities
- Special wafer diffusions
- PbSn plating options
- Package details
- Application notes
- Application and design sample kits
- Custom product and package development

CONTACT US

Corporate Headquarters & Customer Support Team

Central Semiconductor Corp.
145 Adams Avenue
Hauppauge, NY 11788 USA
Main Tel: (631) 435-1110
Main Fax: (631) 435-1824
Support Team Fax: (631) 435-3388
www.centrasemi.com

Worldwide Field Representatives:
www.centrasemi.com/wwreps

Worldwide Distributors:
www.centrasemi.com/wwdistributors

For the latest version of Central Semiconductor's **LIMITATIONS AND DAMAGES DISCLAIMER**, which is part of Central's Standard Terms and Conditions of sale, visit: www.centrasemi.com/terms