

Excellent Integrated System Limited

Stocking Distributor

Click to view price, real time Inventory, Delivery & Lifecycle Information:

[Ledi](#)

[F14326_JENNY-8X1-T4](#)

For any questions, you can email us directly:

sales@integrated-circuit.com

LEDiL

PRODUCT RELEASE



LEDiL's new JENNY-T4 – For parking lot and area lighting

LEDiL's JENNY family of silicone molded optics expands with the new JENNY-T4 version. JENNY-T4 features Type IV light distribution and typical applications include area lighting applications, such as parking lots or complex roads with conflict areas.

As a part of the cost effective silicone lens family JENNY-T4 is designed to work with a range COBs with smaller LES's (up to 10 mm) and 4-chip high power LEDs. This helps to achieve the desired luminous flux from a relatively compact light fixture. JENNY-T4 can be used as single optics or in array configurations and it is available as a single lens or in a 8X1 module. JENNY features easy positioning with pins and installation by gluing or with additional holder.

FEATURES

- IESNA Type IV light distribution
- For small and mid-size COB's
- Excellent thermal withstanding
- Easy to achieve ingress protected luminaire design by using glue for installation

TYPICAL APPLICATIONS

- Area lighting
- Street lighting



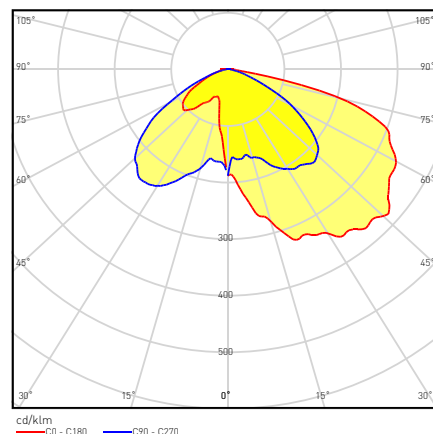
F14563_JENNY-T4



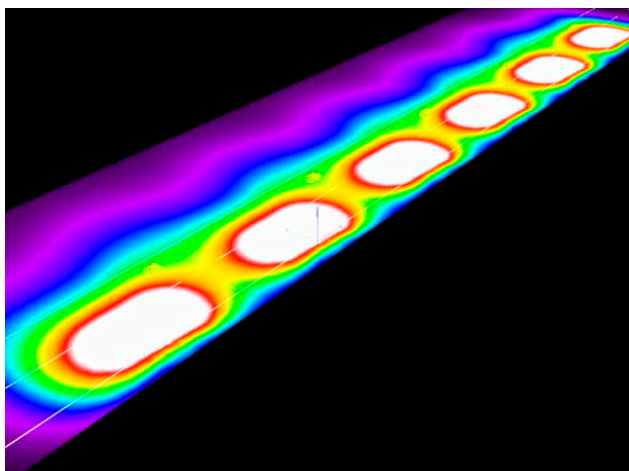
F14326_JENNY-8X1-T4

TECHNICAL SPECIFICATIONS

- Lens is injection molded optical grade silicone
- Recommended usage temperature without holder -40 to +150°C (-40 to +110°C with holder)
- Height: 17 mm
- Dimensions
JENNY-T4: 35 x 35 mm
JENNY-8X1-T4: 280 x 35 mm
- Beam type: Type IV light distribution
- Typical efficiency: 92%
- Can be installed with glue or optional holder



DESIGN EXAMPLE



Street lighting with F14326_JENNY-8X1-T4

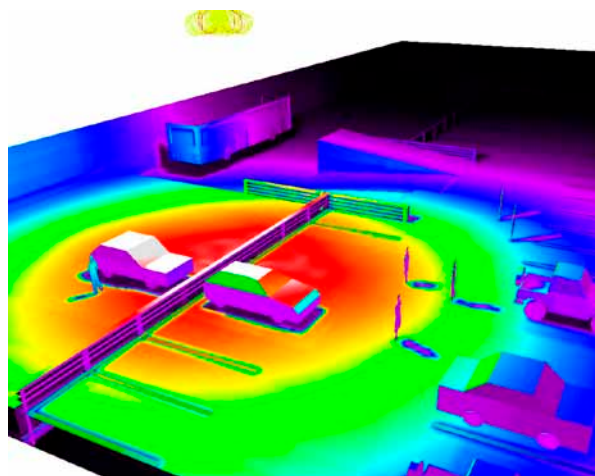
- Road width 12 m
- Pole height 8 m
- Pole distance 22 m
- Each lamp driven by 9500 lm
- E_{av} : 19 lx, E_{max} : 35 lx
- $u0$: 0,555
- Selected lighting class ME4a

	L_{av} (cd/m ²)	U0	U1	Tl (%)
Calculated values:	0.80	0.43	0.69	4
Required values:	≥0.75	≥0.40	≥0.60	≤15
Fullfilled/Not fulfilled	✓	✓	✓	✓

ORDERING INFORMATION

F14563_JENNY-T4
F14326_JENNY-8X1-T4
C14436_JENNY-HLD-A-BLK
F14653_JENNY-2X2-HLD

Visit www.ledil.com for ordering codes and latest product specifications, which may vary by LED



Parking lot lighting

- Pole height 10 m
- One F14326_JENNY-8X1-T4 array shared into four 2x1 units
- Optics assembled in 4 directions with 90deg turn in relation to each other
- Lamp driven 8800lm (4x2200lm), source CXA1520
- Illuminated area 32 meter diameter
- E_{av} on the ground: 9.79 lx
- E_{max} on the ground: 18 lx
- Uniformity 0.295

