

Excellent Integrated System Limited

Stocking Distributor

Click to view price, real time Inventory, Delivery & Lifecycle Information:

[Cornell Dubilier Electronics](#)
[450C182M160AA8](#)

For any questions, you can email us directly:

sales@integrated-circuit.com

Type 450C 105 °C Ultra-Ripple, Long-life, Inverter Grade, Radial Leaded

The Ultimate in Ripple for Plug-in



Type 450C is the 105 °C version of the Type 420C Inverter Grade capacitor, and it is the PC-mount version of the Type 550C. It delivers the ripple-current capability and exceptional life needed for motor-drive and inverter bus capacitors. It is a significantly better value than comparable 105 °C snap-in capacitors. The extended cathode foil of the 450C assures cool operation and heat flow from the capacitor element to the can in all orientations.

Highlights

- Better value than large 105 °C snap-in capacitors
- Especially for motor drives and UPS systems
- ESRs to 6.9 mΩ
- Printed-circuit mounting
- Thermal-Pak™ extended cathode construction

RoHS Compliant

Specifications

| | |
|-----------------------------|---------------------------------|
| Operating Temperature: | -40 °C to 105 °C |
| Rated Voltage: | 100 to 500 Vdc |
| Capacitance: | 150 μF to 24,000 μF ± 20% |
| DC Leakage Current: | ≤ 3 √CV μA, 4 mA max, 5 minutes |
| Cold Impedance: | 20 °C multiple of 25 °C Z ≤ 3 |
| Ripple Current Multipliers: | Ambient Temperature |

| 45 °C | 55 °C | 65 °C | 75 °C | 85 °C | 95 °C | 105 °C |
|-------|-------|-------|-------|-------|-------|--------|
| 1.66 | 1.52 | 1.37 | 1.20 | 1.00 | 0.75 | 0.36 |

Frequency

| | 50 Hz | 60 Hz | 120 Hz | 360 Hz | 1 kHz | 5 kHz | 10 kHz |
|--------------------------------------|-------|-------|--------|--------|-------|-------|--------|
| 1 3/8" & 1 3/4" Diameters | | | | | | | |
| 100 to 350 V | 0.91 | 0.93 | 1.00 | 1.06 | 1.08 | 1.09 | 1.09 |
| 400 to 500 V | 0.82 | 0.86 | 1.00 | 1.14 | 1.20 | 1.23 | 1.23 |
| 2" Diameters | | | | | | | |
| 100 to 350 V | 0.92 | 0.94 | 1.00 | 1.05 | 1.07 | 1.08 | 1.08 |
| 400 to 500 V | 0.82 | 0.86 | 1.00 | 1.14 | 1.20 | 1.23 | 1.27 |

EIA Ripple Life: 5000 h at 85 °C per EIA IS-749 with 85 °C ripple current

Δ Capacitance ± 20%
ESR 200 % of limit
DCL 100 % of limit

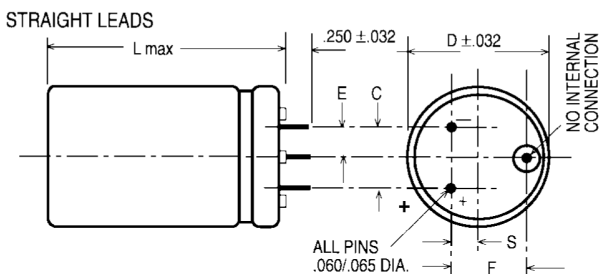
Life Test: 10,000 h at 105 °C with rated voltage

Δ Capacitance ± 10%
ESR 200 % of limit
DCL 100 % of limit

Shelf Life Test: 500 h at 105 °C. Capacitance, ESR and DCL meet initial requirements

Vibration: 10 to 55 Hz, 0.06" and 10 g max, 2 h each plane

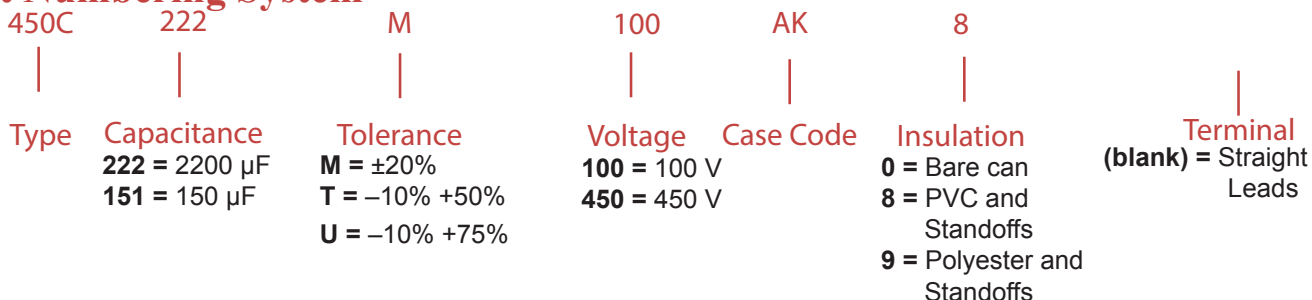
Type 450C 105 °C Ultra-Ripple, Long-life, Inverter Grade, Radial Leaded Outline Drawings



Case Dimensions

| Case Code | Inches | | | | | | Millimeters | | | | | |
|-----------|----------|-------|----------|----------|----------|----------|-------------|--------|---------|---------|---------|---------|
| | D ± .031 | L MAX | C ± .015 | S ± .031 | E ± .031 | F ± .015 | D ± .78 | L MAX | C ± .78 | S ± .78 | E ± .78 | F ± .38 |
| AK | 1.375 | 1.75 | 0.50 | 0.175 | 0.25 | 0.55 | 34.93 | 44.45 | 12.70 | 4.45 | 6.35 | 13.97 |
| AA | 1.375 | 2.25 | 0.50 | 0.175 | 0.25 | 0.55 | 34.93 | 57.15 | 12.70 | 4.45 | 6.35 | 13.97 |
| AH | 1.375 | 2.75 | 0.50 | 0.175 | 0.25 | 0.55 | 34.98 | 69.85 | 12.70 | 4.45 | 6.35 | 13.97 |
| AB | 1.375 | 3.25 | 0.50 | 0.175 | 0.25 | 0.55 | 34.93 | 82.55 | 12.70 | 4.45 | 6.35 | 13.97 |
| AJ | 1.375 | 3.75 | 0.50 | 0.175 | 0.25 | 0.55 | 34.93 | 95.25 | 12.70 | 4.45 | 6.35 | 13.97 |
| AC | 1.375 | 4.25 | 0.50 | 0.175 | 0.25 | 0.55 | 34.93 | 107.95 | 12.70 | 4.45 | 6.35 | 13.97 |
| AD | 1.375 | 4.75 | 0.50 | 0.175 | 0.25 | 0.55 | 34.93 | 120.65 | 12.70 | 4.45 | 6.35 | 13.97 |
| AE | 1.375 | 5.25 | 0.50 | 0.175 | 0.25 | 0.55 | 34.93 | 133.35 | 12.70 | 4.45 | 6.35 | 13.97 |
| AF | 1.375 | 5.75 | 0.50 | 0.175 | 0.25 | 0.55 | 34.93 | 146.05 | 12.70 | 4.45 | 6.35 | 13.97 |
| EA | 1.75 | 2.25 | 0.70 | 0.375 | 0.35 | 0.90 | 44.45 | 57.15 | 17.78 | 9.53 | 8.89 | 22.86 |
| EH | 1.75 | 2.75 | 0.70 | 0.375 | 0.35 | 0.90 | 44.45 | 69.85 | 17.78 | 9.53 | 8.89 | 22.86 |
| EB | 1.75 | 3.25 | 0.70 | 0.375 | 0.35 | 0.90 | 44.45 | 82.55 | 17.78 | 9.53 | 8.89 | 22.86 |
| EJ | 1.75 | 3.75 | 0.70 | 0.375 | 0.35 | 0.90 | 44.45 | 95.25 | 17.78 | 9.53 | 8.89 | 22.86 |
| EC | 1.75 | 4.25 | 0.70 | 0.375 | 0.35 | 0.90 | 44.45 | 107.95 | 17.78 | 9.53 | 8.89 | 22.86 |
| ED | 1.75 | 4.75 | 0.70 | 0.375 | 0.35 | 0.90 | 44.45 | 120.65 | 17.78 | 9.53 | 8.89 | 22.86 |
| EE | 1.75 | 5.25 | 0.70 | 0.375 | 0.35 | 0.90 | 44.45 | 133.35 | 17.78 | 9.53 | 8.89 | 22.86 |
| EF | 1.75 | 5.75 | 0.70 | 0.375 | 0.35 | 0.90 | 44.45 | 146.05 | 17.78 | 9.53 | 8.89 | 22.86 |
| BA | 2.00 | 2.25 | 0.80 | 0.425 | 0.40 | 1.00 | 50.80 | 57.15 | 20.32 | 10.80 | 10.16 | 25.40 |
| BH | 2.00 | 2.75 | 0.80 | 0.425 | 0.40 | 1.00 | 50.80 | 69.85 | 20.32 | 10.80 | 10.16 | 25.40 |
| BB | 2.00 | 3.25 | 0.80 | 0.425 | 0.40 | 1.00 | 50.80 | 82.55 | 20.32 | 10.80 | 10.16 | 25.40 |
| BJ | 2.00 | 3.75 | 0.80 | 0.425 | 0.40 | 1.00 | 50.80 | 95.25 | 20.32 | 10.80 | 10.16 | 25.40 |
| BC | 2.00 | 4.25 | 0.80 | 0.425 | 0.40 | 1.00 | 50.80 | 107.95 | 20.32 | 10.80 | 10.16 | 25.40 |
| BD | 2.00 | 4.75 | 0.80 | 0.425 | 0.40 | 1.00 | 50.80 | 120.65 | 20.32 | 10.80 | 10.16 | 25.40 |
| BE | 2.00 | 5.25 | 0.80 | 0.425 | 0.40 | 1.00 | 50.80 | 133.25 | 20.32 | 10.80 | 10.16 | 25.40 |
| BF | 2.00 | 5.75 | 0.80 | 0.425 | 0.40 | 1.00 | 50.80 | 146.05 | 20.32 | 10.80 | 10.16 | 25.40 |

Part Numbering System



Type 450C 105 °C Ultra-Ripple, Long-life, Inverter Grade, Radial Leaded

Ratings

| Cap. (µF) | Catalog Part Number | ESR Max. 25 °C | | Ripple Amps, 85 °C | | Nominal Size D X L (in) |
|--------------------------------|---------------------|--------------------|--------------------|--------------------|-------------------|-------------------------|
| | | 120 Hz 20 kHz (mΩ) | 120 Hz 20 kHz (mΩ) | 120 Hz 20 kHz (A) | 120 Hz 20 kHz (A) | |
| 100 Vdc (125 Vdc Surge) | | | | | | |
| 2200 | 450C222M100AK8 | 74.90 | 50.90 | 4.20 | 5.20 | 1 3/8 X 1 3/4 |
| 3300 | 450C332M100AA8 | 50.30 | 34.20 | 5.80 | 7.30 | 1 3/8 X 2 1/4 |
| 4000 | 450C402M100AH8 | 36.80 | 24.90 | 7.00 | 8.80 | 1 3/8 X 2 3/4 |
| 4800 | 450C482M100EA8 | 40.10 | 27.20 | 7.50 | 9.40 | 1 3/4 X 2 1/4 |
| 5800 | 450C582M100AB8 | 28.50 | 19.40 | 8.60 | 10.70 | 1 3/8 X 3 1/4 |
| 6100 | 450C612M100BA8 | 37.00 | 25.10 | 8.40 | 10.50 | 2 X 2 1/4 |
| 6600 | 450C662M100EH8 | 28.70 | 19.50 | 9.50 | 11.90 | 1 3/4 X 2 3/4 |
| 7100 | 450C712M100AJ8 | 23.50 | 15.90 | 9.90 | 12.40 | 1 3/8 X 3 3/4 |
| 8200 | 450C822M100BH8 | 26.30 | 17.80 | 10.70 | 13.40 | 2 X 2 3/4 |
| 8400 | 450C842M100AC8 | 20.10 | 13.60 | 11.30 | 14.10 | 1 3/8 X 4 1/4 |
| 8700 | 450C872M100EB8 | 22.20 | 15.10 | 11.70 | 14.60 | 1 3/4 X 3 1/4 |
| 9800 | 450C982M100AD8 | 17.70 | 12.00 | 12.60 | 15.80 | 1 3/8 X 4 3/4 |
| 11000 | 450C113M100AE8 | 15.90 | 10.80 | 13.90 | 17.40 | 1 3/8 X 5 1/4 |
| 11000 | 450C113M100EJ8 | 18.30 | 12.40 | 13.30 | 16.60 | 1 3/4 X 3 3/4 |
| 11000 | 450C113M100BB8 | 20.40 | 13.80 | 12.90 | 16.10 | 2 X 3 1/4 |
| 12000 | 450C123M100AF8 | 18.10 | 12.30 | 13.70 | 17.10 | 1 3/8 X 5 3/4 |
| 13000 | 450C133M100EC8 | 15.60 | 10.60 | 14.90 | 18.60 | 1 3/4 X 4 1/4 |
| 14000 | 450C143M100BJ8 | 16.80 | 11.40 | 15.90 | 19.90 | 2 X 3 3/4 |
| 15000 | 450C153M100ED8 | 13.70 | 9.30 | 16.80 | 21.00 | 1 3/4 X 4 3/4 |
| 16000 | 450C163M100BC8 | 14.40 | 9.80 | 17.30 | 21.60 | 2 X 4 1/4 |
| 17000 | 450C173M100EE8 | 12.30 | 8.40 | 18.80 | 23.40 | 1 3/4 X 5 1/4 |
| 18000 | 450C183M100BD8 | 12.70 | 8.60 | 19.00 | 23.70 | 2 X 4 3/4 |
| 19000 | 450C193M100EF8 | 11.30 | 7.60 | 21.00 | 26.20 | 1 3/4 X 5 3/4 |
| 22000 | 450C223M100BE8 | 11.10 | 7.50 | 21.00 | 26.20 | 2 X 5 1/4 |
| 24000 | 450C243M100BF8 | 10.20 | 6.90 | 22.70 | 28.40 | 2 X 5 3/4 |
| 160 Vdc (200 Vdc Surge) | | | | | | |
| 1200 | 450C122M160AK8 | 113.00 | 65.20 | 4.20 | 5.60 | 1 3/8 X 1 3/4 |
| 1800 | 450C182M160AA8 | 75.70 | 44.10 | 5.90 | 7.70 | 1 3/8 X 2 1/4 |
| 2600 | 450C262M160EA8 | 56.20 | 36.80 | 7.50 | 9.30 | 1 3/4 X 2 1/4 |
| 3000 | 450C302M160AH8 | 53.20 | 31.30 | 7.30 | 9.50 | 1 3/8 X 2 3/4 |
| 3300 | 450C332M160AB8 | 41.40 | 24.70 | 8.90 | 11.50 | 1 3/8 X 3 1/4 |
| 3300 | 450C332M160BA8 | 47.90 | 34.10 | 8.30 | 9.90 | 2 X 2 1/4 |
| 3600 | 450C362M160EH8 | 40.20 | 26.00 | 9.50 | 11.80 | 1 3/4 X 2 3/4 |
| 4000 | 450C402M160AJ8 | 34.20 | 20.60 | 10.20 | 13.10 | 1 3/8 X 3 3/4 |
| 4500 | 450C452M160BH8 | 33.90 | 23.80 | 10.70 | 12.70 | 2 X 2 3/4 |
| 4700 | 450C472M160EB8 | 31.20 | 20.40 | 11.70 | 14.40 | 1 3/4 X 3 1/4 |
| 4800 | 450C482M160AC8 | 29.40 | 18.00 | 11.60 | 14.80 | 1 3/8 X 4 1/4 |
| 5300 | 450C532M160AD8 | 26.90 | 16.50 | 12.70 | 16.20 | 1 3/8 X 4 3/4 |
| 5800 | 450C582M160EJ8 | 25.70 | 16.90 | 13.30 | 16.30 | 1 3/4 X 3 3/4 |
| 6000 | 450C602M160BB8 | 26.40 | 18.60 | 12.70 | 15.10 | 2 X 3 1/4 |
| 6100 | 450C612M160AE8 | 24.20 | 15.10 | 14.00 | 17.80 | 1 3/8 X 5 1/4 |
| 6700 | 450C672M160AF8 | 22.20 | 14.10 | 15.40 | 19.30 | 1 3/8 X 5 3/4 |
| 6900 | 450C692M160EC8 | 22.00 | 14.70 | 14.90 | 18.20 | 1 3/4 X 4 1/4 |
| 7400 | 450C742M160BJ8 | 21.70 | 15.50 | 15.70 | 18.60 | 2 X 3 3/4 |
| 8000 | 450C802M160ED8 | 19.40 | 13.10 | 16.70 | 20.30 | 1 3/4 X 4 3/4 |
| 8700 | 450C872M160BC8 | 18.70 | 13.40 | 17.10 | 20.10 | 2 X 4 1/4 |
| 9100 | 450C912M160EE8 | 17.50 | 11.90 | 18.60 | 22.60 | 1 3/4 X 5 1/4 |
| 10000 | 450C103M160EF8 | 16.00 | 11.00 | 20.80 | 25.10 | 1 3/4 X 5 3/4 |
| 10000 | 450C103M160BD8 | 16.50 | 11.90 | 18.70 | 22.00 | 2 X 4 3/4 |
| 12000 | 450C123M160BE8 | 14.50 | 10.70 | 20.70 | 24.10 | 2 X 5 1/4 |
| 13000 | 450C133M160BF8 | 13.40 | 9.90 | 22.30 | 25.90 | 2 X 5 3/4 |
| 200 Vdc (250 Vdc Surge) | | | | | | |
| 880 | 450C881M200AK8 | 142.00 | 78.90 | 3.80 | 5.00 | 1 3/8 X 1 3/4 |
| 1300 | 450C132M200AA8 | 95.50 | 53.30 | 5.30 | 7.00 | 1 3/8 X 2 1/4 |
| 1900 | 450C192M200EA8 | 68.40 | 42.50 | 6.80 | 8.70 | 1 3/4 X 2 1/4 |
| 2000 | 450C202M200AH8 | 66.90 | 37.70 | 6.50 | 8.60 | 1 3/8 X 2 3/4 |
| 2500 | 450C252M200AB8 | 51.90 | 29.50 | 7.90 | 10.50 | 1 3/8 X 3 1/4 |
| 250 Vdc (300 Vdc Surge) | | | | | | |
| 2500 | 450C252M200BA8 | 56.70 | 38.10 | 7.70 | 9.30 | 2 X 2 1/4 |
| 2700 | 450C272M200EH8 | 49.00 | 30.10 | 8.60 | 11.00 | 1 3/4 X 2 3/4 |
| 3000 | 450C302M200AJ8 | 42.70 | 24.60 | 9.10 | 12.00 | 1 3/8 X 3 3/4 |
| 3300 | 450C332M200BH8 | 40.30 | 26.70 | 9.80 | 12.00 | 2 X 2 3/4 |
| 3500 | 450C352M200EB8 | 37.90 | 23.50 | 10.60 | 13.40 | 1 3/4 X 3 1/4 |
| 3600 | 450C362M200AC8 | 36.50 | 21.30 | 10.40 | 13.60 | 1 3/8 X 4 1/4 |
| 4000 | 450C402M200AD8 | 33.40 | 19.50 | 11.40 | 14.90 | 1 3/8 X 4 3/4 |
| 4300 | 450C432M200EJ8 | 31.20 | 19.50 | 12.10 | 15.20 | 1 3/4 X 3 3/4 |
| 4400 | 450C442M200BB8 | 31.20 | 20.90 | 11.70 | 14.30 | 2 X 3 1/4 |
| 4500 | 450C452M200AE8 | 29.90 | 17.70 | 12.60 | 16.40 | 1 3/8 X 5 1/4 |
| 5000 | 450C502M200AF8 | 27.30 | 16.40 | 13.90 | 17.90 | 1 3/8 X 5 3/4 |
| 5100 | 450C512M200EC8 | 26.60 | 16.80 | 13.50 | 17.00 | 1 3/4 X 4 1/4 |
| 5500 | 450C552M200BJ8 | 25.70 | 17.30 | 14.50 | 17.60 | 2 X 3 3/4 |
| 6000 | 450C602M200ED8 | 23.40 | 14.90 | 15.20 | 19.00 | 1 3/4 X 4 3/4 |
| 6400 | 450C642M200BC8 | 22.00 | 14.90 | 15.70 | 19.10 | 2 X 4 1/4 |
| 6700 | 450C672M200EE8 | 21.00 | 13.50 | 17.00 | 21.20 | 1 3/4 X 5 1/4 |
| 7400 | 450C742M200BD8 | 19.40 | 13.30 | 17.30 | 20.90 | 2 X 4 3/4 |
| 7600 | 450C762M200EF8 | 19.10 | 12.50 | 19.00 | 23.60 | 1 3/4 X 5 3/4 |
| 8900 | 450C892M200BE8 | 16.90 | 11.80 | 19.10 | 22.90 | 2 X 5 1/4 |
| 9800 | 450C982M200BF8 | 15.50 | 10.90 | 20.70 | 24.70 | 2 X 5 3/4 |
| 300 Vdc (350 Vdc Surge) | | | | | | |
| 380 | 450C381M300AK8 | 283.00 | 134.00 | 2.40 | 3.50 | 1 3/8 X 1 3/4 |
| 570 | 450C571M300AA8 | 189.00 | 89.90 | 3.30 | 4.80 | 1 3/8 X 2 1/4 |
| 800 | 450C801M300AH8 | 131.00 | 63.10 | 4.10 | 6.00 | 1 3/8 X 2 3/4 |
| 960 | 450C961M300EA8 | 119.00 | 56.70 | 4.80 | 6.90 | 1 3/4 X 2 1/4 |
| 1100 | 450C112M300AB8 | 101.00 | 49.00 | 5.10 | 7.30 | 1 3/8 X 3 1/4 |
| 1200 | 450C122M300BA8 | 106.00 | 53.20 | 5.50 | 7.80 | 2 X 2 1/4 |
| 1300 | 450C132M300EH8 | 87.00 | 40.80 | 6.00 | 8.70 | 1 3/4 X 2 3/4 |
| 1300 | 450C132M300AJ8 | 82.40 | 40.40 | 5.90 | 8.40 | 1 3/8 X 3 3/4 |
| 1500 | 450C152M300AC8 | 69.70 | 34.60 | 6.70 | 9.50 | 1 3/8 X 4 1/4 |
| 1600 | 450C162M300BH8 | 75.80 | 37.70 | 7.00 | 9.90 | 2 X 2 3/4 |
| 1700 | 450C172M300EB8 | 66.90 | 31.70 | 7.30 | 10.70 | 1 3/4 X 3 1/4 |

Type 450C 105 °C Ultra-Ripple, Long-life, Inverter Grade, Radial Leaded

| Cap. (µF) | Catalog Part Number | ESR Max. 25 °C | | Ripple Amps, 85 °C | | Nominal Size D X L (in) |
|--------------------------------|------------------------|-----------------------|----------------|-----------------------|---------------|----------------------------------|
| | | 120 Hz 20 kHz (mΩ) | 20 kHz (mΩ) | 120 Hz 20 kHz (A) | 20 kHz (A) | |
| 1800 | 450C182M300AD8 | 60.60 | 30.50 | 7.50 | 10.60 | 1 3/8 X 4 3/4 |
| 2100 | 450C212M300AE8 | 53.70 | 27.50 | 8.40 | 11.70 | 1 3/8 X 5 1/4 |
| 2100 | 450C212M300EJ8 | 54.50 | 26.10 | 8.40 | 12.10 | 1 3/4 X 3 3/4 |
| 2100 | 450C212M300BB8 | 58.40 | 29.30 | 8.40 | 11.90 | 2 X 3 1/4 |
| 2300 | 450C232M300AF8 | 48.40 | 25.10 | 9.30 | 12.90 | 1 3/8 X 5 3/4 |
| 2500 | 450C252M300EC8 | 48.10 | 23.30 | 9.50 | 13.60 | 1 3/4 X 4 1/4 |
| 2600 | 450C262M300BJ8 | 47.60 | 24.10 | 10.40 | 14.70 | 2 X 3 3/4 |
| 2900 | 450C292M300ED8 | 41.80 | 20.50 | 10.70 | 15.30 | 1 3/4 X 4 3/4 |
| 3100 | 450C312M300BC8 | 41.10 | 21.50 | 11.30 | 15.60 | 2 X 4 1/4 |
| 3300 | 450C332M300EE8 | 37.10 | 18.40 | 12.00 | 17.10 | 1 3/4 X 5 1/4 |
| 3600 | 450C362M300BD8 | 35.50 | 18.30 | 12.50 | 17.50 | 2 X 4 3/4 |
| 3700 | 450C372M300EF8 | 33.50 | 16.90 | 13.50 | 19.10 | 1 3/4 X 5 3/4 |
| 4300 | 450C432M300BE8 | 30.50 | 16.10 | 14.00 | 19.30 | 2 X 5 1/4 |
| 4700 | 450C472M300BF8 | 27.60 | 14.80 | 15.30 | 20.80 | 2 X 5 3/4 |
| 350 Vdc (400 Vdc Surge) | | | | | | |
| 300 | 450C301M350AK8 | 325.00 | 150.00 | 2.20 | 3.30 | 1 3/8 X 1 3/4 |
| 460 | 450C461M350AA8 | 217.00 | 100.00 | 3.10 | 4.60 | 1 3/8 X 2 1/4 |
| 600 | 450C601M350AH8 | 151.00 | 70.30 | 3.80 | 5.60 | 1 3/8 X 2 3/4 |
| 770 | 450C771M350EA8 | 135.00 | 61.90 | 4.50 | 6.60 | 1 3/4 X 2 1/4 |
| 860 | 450C861M350AB8 | 116.00 | 54.50 | 4.70 | 6.90 | 1 3/8 X 3 1/4 |
| 960 | 450C961M350BA8 | 119.00 | 57.40 | 5.20 | 7.50 | 2 X 2 1/4 |
| 1000 | 450C102M350EH8 | 99.00 | 44.70 | 5.60 | 8.30 | 1 3/4 X 2 3/4 |
| 1000 | 450C102M350AJ8 | 94.40 | 44.90 | 5.50 | 8.00 | 1 3/8 X 3 3/4 |
| 1200 | 450C122M350AC8 | 79.80 | 38.40 | 6.30 | 9.10 | 1 3/8 X 4 1/4 |
| 1300 | 450C132M350BH8 | 85.60 | 40.70 | 6.60 | 9.60 | 2 X 2 3/4 |
| 1400 | 450C142M350EB8 | 76.10 | 34.70 | 6.90 | 10.20 | 1 3/4 X 3 1/4 |
| 1500 | 450C152M350AD8 | 69.30 | 33.80 | 7.00 | 10.10 | 1 3/8 X 4 3/4 |
| 1700 | 450C172M350EJ8 | 62.00 | 28.50 | 7.90 | 11.60 | 1 3/4 X 3 3/4 |
| 1700 | 450C172M350BB8 | 65.80 | 31.60 | 7.90 | 11.40 | 2 X 3 1/4 |
| 1700 | 450C172M350AE8 | 61.40 | 30.30 | 7.80 | 11.20 | 1 3/8 X 5 1/4 |
| 1800 | 450C182M350AF8 | 55.20 | 27.70 | 8.70 | 12.30 | 1 3/8 X 5 3/4 |
| 2000 | 450C202M350EC8 | 54.60 | 25.40 | 8.90 | 13.00 | 1 3/4 X 4 1/4 |
| 2100 | 450C212M350BJ8 | 53.70 | 26.00 | 9.80 | 14.10 | 2 X 3 3/4 |
| 2300 | 450C232M350ED8 | 47.40 | 22.30 | 10.00 | 14.60 | 1 3/4 X 4 3/4 |
| 2500 | 450C252M350BC8 | 46.20 | 23.10 | 10.70 | 15.10 | 2 X 4 1/4 |
| 2600 | 450C262M350EE8 | 42.00 | 20.00 | 11.30 | 16.40 | 1 3/4 X 5 1/4 |
| 2900 | 450C292M350BD8 | 40.00 | 19.70 | 11.80 | 16.80 | 2 X 4 3/4 |
| 3000 | 450C302M350EF8 | 37.80 | 18.30 | 12.70 | 18.30 | 1 3/4 X 5 3/4 |
| 3500 | 450C352M350BE8 | 34.20 | 17.30 | 13.20 | 18.60 | 2 X 5 1/4 |
| 3800 | 450C382M350BF8 | 30.90 | 15.80 | 14.40 | 20.10 | 2 X 5 3/4 |
| 400 Vdc (450 Vdc Surge) | | | | | | |
| 270 | 450C271M400AK8 | 356.00 | 161.00 | 2.10 | 3.10 | 1 3/8 X 1 3/4 |
| 410 | 450C411M400AA8 | 238.00 | 108.00 | 3.00 | 4.40 | 1 3/8 X 2 1/4 |
| 600 | 450C601M400AH8 | 166.00 | 75.70 | 3.70 | 5.40 | 1 3/8 X 2 3/4 |
| 690 | 450C691M400EA8 | 147.00 | 65.80 | 4.30 | 6.40 | 1 3/4 X 2 1/4 |
| 770 | 450C771M400AB8 | 127.00 | 58.70 | 4.50 | 6.60 | 1 3/8 X 3 1/4 |
| 860 | 450C861M400BA8 | 129.00 | 60.60 | 5.00 | 7.30 | 2 X 2 1/4 |
| 930 | 450C931M400EH8 | 108.00 | 47.60 | 5.30 | 8.10 | 1 3/4 X 2 3/4 |
| 930 | 450C931M400AJ8 | 103.40 | 48.20 | 5.20 | 7.70 | 1 3/8 X 3 3/4 |
| 1100 | 450C112M400AC8 | 87.40 | 41.20 | 6.00 | 8.70 | 1 3/8 X 4 1/4 |
| 1200 | 450C122M400EB8 | 83.00 | 36.90 | 6.60 | 9.90 | 1 3/4 X 3 1/4 |
| 1200 | 450C122M400BH8 | 92.90 | 43.00 | 6.30 | 9.30 | 2 X 2 3/4 |
| 1300 | 450C132M400AD8 | 75.90 | 36.20 | 6.70 | 9.70 | 1 3/8 X 4 3/4 |
| 1500 | 450C152M400BB8 | 71.40 | 33.30 | 7.60 | 11.10 | 2 X 3 1/4 |
| 1500 | 450C152M400AE8 | 67.20 | 32.50 | 7.50 | 10.80 | 1 3/8 X 5 1/4 |
| 1500 | 450C152M400EJ8 | 67.50 | 30.30 | 7.50 | 11.30 | 1 3/4 X 3 3/4 |
| 1600 | 450C162M400AF8 | 60.40 | 29.60 | 8.30 | 11.90 | 1 3/8 X 5 3/4 |
| 1800 | 450C182M400EC8 | 59.40 | 26.90 | 8.50 | 12.60 | 1 3/4 X 4 1/4 |
| 1900 | 450C192M400BJ8 | 58.20 | 27.40 | 9.40 | 13.70 | 2 X 3 3/4 |

| Cap. (µF) | Catalog Part Number | ESR Max. 25 °C | | Ripple Amps, 85 °C | | Nominal Size D X L (in) |
|------------------------------------|------------------------|-----------------------|----------------|-----------------------|---------------|----------------------------------|
| | | 120 Hz 20 kHz (mΩ) | 20 kHz (mΩ) | 120 Hz 20 kHz (A) | 20 kHz (A) | |
| 2100 | 450C212M400ED8 | 51.60 | 23.70 | 9.60 | 14.20 | 1 3/4 X 4 3/4 |
| 2200 | 450C222M400BC8 | 50.10 | 24.30 | 10.20 | 14.70 | 2 X 4 1/4 |
| 2300 | 450C232M400EE8 | 45.70 | 21.20 | 10.80 | 15.90 | 1 3/4 X 5 1/4 |
| 2600 | 450C262M400EF8 | 41.10 | 19.40 | 12.20 | 17.80 | 1 3/4 X 5 3/4 |
| 2600 | 450C262M400BD8 | 43.30 | 20.70 | 11.40 | 16.40 | 2 X 4 3/4 |
| 3100 | 450C312M400BE8 | 37.00 | 18.10 | 12.70 | 18.20 | 2 X 5 1/4 |
| 3400 | 450C342M400BF8 | 33.40 | 16.60 | 13.90 | 19.70 | 2 X 5 3/4 |
| 450 Vdc (500 Vdc Surge) | | | | | | |
| 210 | 450C211M450AK8 | 384.00 | 171.00 | 2.00 | 3.10 | 1 3/8 X 1 3/4 |
| 310 | 450C311M450AA8 | 256.00 | 115.00 | 2.90 | 4.30 | 1 3/8 X 2 1/4 |
| 400 | 450C401M450AH8 | 178.00 | 80.40 | 3.50 | 5.30 | 1 3/8 X 2 3/4 |
| 520 | 450C521M450EA8 | 157.00 | 69.20 | 4.10 | 6.30 | 1 3/4 X 2 1/4 |
| 580 | 450C581M450AB8 | 137.00 | 62.30 | 4.30 | 6.40 | 1 3/8 X 3 1/4 |
| 650 | 450C651M450BA8 | 138.00 | 63.30 | 4.80 | 7.10 | 2 X 2 1/4 |
| 700 | 450C701M450EH8 | 116.00 | 50.10 | 5.20 | 7.90 | 1 3/4 X 2 3/4 |
| 710 | 450C711M450AJ8 | 111.00 | 51.10 | 5.10 | 7.50 | 1 3/8 X 3 3/4 |
| 840 | 450C841M450AC8 | 93.90 | 43.60 | 5.80 | 8.50 | 1 3/8 X 4 1/4 |
| 870 | 450C871M450BH8 | 99.20 | 45.00 | 6.10 | 9.10 | 2 X 2 3/4 |
| 920 | 450C921M450EB8 | 88.90 | 38.80 | 6.40 | 9.60 | 1 3/4 X 3 1/4 |
| 990 | 450C991M450AD8 | 81.50 | 38.30 | 6.50 | 9.50 | 1 3/8 X 4 3/4 |
| 1100 | 450C112M450EJ8 | 72.30 | 31.80 | 7.30 | 11.00 | 1 3/4 X 3 3/4 |
| 1100 | 450C112M450AE8 | 72.10 | 34.30 | 7.20 | 10.50 | 1 3/8 X 5 1/4 |
| 1200 | 450C122M450AF8 | 64.80 | 31.20 | 8.00 | 11.60 | 1 3/8 X 5 3/4 |
| 1200 | 450C122M450BB8 | 76.30 | 34.90 | 7.40 | 10.90 | 2 X 3 1/4 |
| 1400 | 450C142M450BJ8 | 62.10 | 28.70 | 9.10 | 13.50 | 2 X 3 3/4 |
| 1400 | 450C142M450EC8 | 63.60 | 28.30 | 8.20 | 12.30 | 1 3/4 X 4 1/4 |
| 1600 | 450C162M450ED8 | 55.20 | 24.80 | 9.30 | 13.90 | 1 3/4 X 4 3/4 |
| 1700 | 450C172M450BC8 | 53.40 | 25.40 | 9.90 | 14.40 | 2 X 4 1/4 |
| 1800 | 450C182M450EE8 | 48.90 | 22.30 | 10.50 | 15.50 | 1 3/4 X 5 1/4 |
| 2000 | 450C202M450EF8 | 44.00 | 20.30 | 11.80 | 17.40 | 1 3/4 X 5 3/4 |
| 2000 | 450C202M450BD8 | 46.20 | 21.60 | 11.00 | 16.10 | 2 X 4 3/4 |
| 2300 | 450C232M450BE8 | 39.40 | 18.90 | 12.30 | 17.80 | 2 X 5 1/4 |
| 2600 | 450C262M450BF8 | 35.60 | 17.30 | 13.40 | 19.30 | 2 X 5 3/4 |
| 500 Volts (550 Volts Surge) | | | | | | |
| 150 | 450C151M500AK8 | 440.00 | 158.00 | 1.90 | 3.20 | 1 3/8 X 1 3/4 |
| 230 | 450C231M500AA8 | 294.00 | 106.00 | 2.70 | 4.50 | 1 3/8 X 2 1/4 |
| 330 | 450C331M500AH8 | 204.00 | 73.80 | 3.30 | 5.50 | 1 3/8 X 2 3/4 |
| 350 | 450C351M500EA8 | 262.00 | 146.00 | 3.70 | 6.00 | 1 3/4 X 2 1/4 |
| 430 | 450C431M500AB8 | 157.00 | 57.00 | 4.10 | 6.70 | 1 3/8 X 3 1/4 |
| 440 | 450C441M500BA8 | 208.00 | 122.00 | 4.40 | 6.90 | 2 X 2 1/4 |
| 500 | 450C501M500EH8 | 182.00 | 102.00 | 4.80 | 7.70 | 1 3/4 X 2 3/4 |
| 530 | 450C531M500AJ8 | 128.00 | 46.70 | 4.70 | 7.80 | 1 3/8 X 3 3/4 |
| 620 | 450C621M500BH8 | 144.00 | 85.30 | 5.70 | 9.00 | 2 X 2 3/4 |
| 630 | 450C631M500AC8 | 145.00 | 82.80 | 5.40 | 8.90 | 1 3/8 X 4 1/4 |
| 660 | 450C661M500EB8 | 140.00 | 78.60 | 5.90 | 9.50 | 1 3/4 X 3 1/4 |
| 700 | 450C701M500AD8 | 93.50 | 34.70 | 6.10 | 9.90 | 1 3/8 X 4 3/4 |
| 820 | 450C821M500EJ8 | 114.00 | 64.40 | 6.80 | 10.90 | 1 3/4 X 3 3/4 |
| 830 | 450C831M500BB8 | 111.00 | 66.00 | 6.90 | 10.70 | 2 X 3 1/4 |
| 830 | 450C831M500AE8 | 82.70 | 31.00 | 6.80 | 11.00 | 1 3/8 X 5 1/4 |
| 930 | 450C931M500AF8 | 74.30 | 28.20 | 7.50 | 12.20 | 1 3/8 X 5 3/4 |
| 970 | 450C971M500EC8 | 96.00 | 54.80 | 7.60 | 12.20 | 1 3/4 X 4 1/4 |
| 1000 | 450C102M500BJ8 | 90.40 | 54.10 | 8.50 | 13.30 | 2 X 3 3/4 |
| 1100 | 450C112M500ED8 | 83.30 | 48.00 | 8.60 | 13.70 | 1 3/4 X 4 3/4 |
| 1200 | 450C122M500BC8 | 76.40 | 46.20 | 9.30 | 14.50 | 2 X 4 1/4 |
| 1300 | 450C132M500EE8 | 73.70 | 42.80 | 9.70 | 15.40 | 1 3/4 X 5 1/4 |
| 1400 | 450C142M500EF8 | 66.30 | 38.90 | 11.00 | 17.30 | 1 3/4 X 5 3/4 |
| 1400 | 450C142M500BD8 | 66.40 | 40.50 | 10.30 | 15.90 | 2 X 4 3/4 |
| 1700 | 450C172M500BE8 | 57.30 | 35.40 | 11.50 | 17.70 | 2 X 5 1/4 |
| 1900 | 450C192M500BF8 | 51.80 | 32.30 | 12.60 | 19.10 | 2 X 5 3/4 |

Notice and Disclaimer: All product drawings, descriptions, specifications, statements, information and data (collectively, the "Information") in this datasheet or other publication are subject to change. The customer is responsible for checking, confirming and verifying the extent to which the Information contained in this datasheet or other publication is applicable to an order at the time the order is placed. All Information given herein is believed to be accurate and reliable, but it is presented without any guarantee, warranty, representation or responsibility of any kind, expressed or implied. Statements of suitability for certain applications are based on the knowledge that the Cornell Dubilier company providing such statements ("Cornell Dubilier") has of operating conditions that such Cornell Dubilier company regards as typical for such applications, but are not intended to constitute any guarantee, warranty or representation regarding any such matter – and Cornell Dubilier specifically and expressly disclaims any guarantee, warranty or representation concerning the suitability for a specific customer application, use, storage, transportation, or operating environment. The Information is intended for use only by customers who have the requisite experience and capability to determine the correct products for their application. Any technical advice inferred from this Information or otherwise provided by Cornell Dubilier with reference to the use of any Cornell Dubilier products is given gratis (unless otherwise specified by Cornell Dubilier), and Cornell Dubilier assumes no obligation or liability for the advice given or results obtained. Although Cornell Dubilier strives to apply the most stringent quality and safety standards regarding the design and manufacturing of its products, in light of the current state of the art, isolated component failures may still occur. Accordingly, customer applications which require a high degree of reliability or safety should employ suitable designs or other safeguards (such as installation of protective circuitry or redundancies or other appropriate protective measures) in order to ensure that the failure of an electrical component does not result in a risk of personal injury or property damage. Although all product-related warnings, cautions and notes must be observed, the customer should not assume that all safety measures are indicated in such warnings, cautions and notes, or that other safety measures may not be required.