

Excellent Integrated System Limited

Stocking Distributor

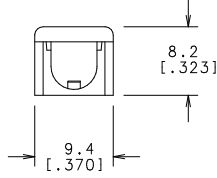
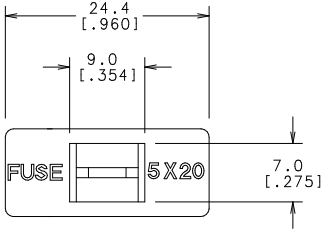
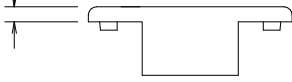
Click to view price, real time Inventory, Delivery & Lifecycle Information:

[Littelfuse](#)
[00BS0232P](#)

For any questions, you can email us directly:

sales@integrated-circuit.com

1.8
[.071]



CAD GENERATED DRAWING - NO PENCIL CHANGES ALLOWED

NO	COMPONENT NO	DESCRIPTION	QTY/M	U/M
BILL OF MATERIAL				
COPIES TO		FINISH		
1	9 18	DRW	DATE 06/09/04	SCALE 2:1
2	10 19	BJJ	DATE	SUPER DRW
3	12 20	CHK	DATE	FINISH GOOD WT
4	13 21	APPD	DATE	GRAMS/PIECE
5	14 23			
6	15 33			
7	16 43			
8	17 53			
TOLERANCE UNLESS OTHERWISE SPECIFIED		TWO PLACE DEC ±.25(.01)		
THREE PLACE DEC ±.100(.004)		ANGULAR ±1°		
TITLE		5 X 20mm PC FUSEHOLDER COVER		
DES PLAINES, ILLINOIS 60016				
REVISION NO. A DRAWG. NO. 00BS0232P FINAL				

UNLESS OTHERWISE SPECIFIED, DIMENSIONS ARE IN MILLIMETERS. DIMENSIONS IN BRACKETS [] ARE INCHES.

UNLESS OTHERWISE SPECIFIED, DIMENSIONS DO NOT INCLUDE PLATING.

DENOTES CRITICAL CHARACTERISTICS.

DENOTES CPK DIMENSIONS - MINIMUM CPK VALUE

DENOTES A CHARACTERISTIC THAT PROVIDES AN INDICATION OF PROCESS PERFORMANCE IN PROCEDURE FOR MEASUREMENT (SEE LITTELFUSE INSPECTION INSTRUCTIONS).

DENOTES CP DIMENSIONS - MINIMUM CP VALUE

(SEE DIMENSIONAL LIMITATIONS SECTION ON DRAWING AND INITIALLY LOCATED TO ALLOW FOR MAXIMUM TOOL LIFE.

UNLESS OTHERWISE SPECIFIED, DIMENSIONS ARE IN MILLIMETERS. DIMENSIONS IN BRACKETS [] ARE INCHES.

UNLESS OTHERWISE SPECIFIED, DIMENSIONS DO NOT INCLUDE PLATING.

DENOTES CRITICAL CHARACTERISTICS.

DENOTES CPK DIMENSIONS - MINIMUM CPK VALUE

DENOTES A CHARACTERISTIC THAT PROVIDES AN INDICATION OF PROCESS PERFORMANCE IN PROCEDURE FOR MEASUREMENT (SEE LITTELFUSE INSPECTION INSTRUCTIONS).

DENOTES CP DIMENSIONS - MINIMUM CP VALUE

(SEE DIMENSIONAL LIMITATIONS SECTION ON DRAWING AND INITIALLY LOCATED TO ALLOW FOR MAXIMUM TOOL LIFE.

UNLESS OTHERWISE SPECIFIED, DIMENSIONS ARE IN MILLIMETERS. DIMENSIONS IN BRACKETS [] ARE INCHES.

UNLESS OTHERWISE SPECIFIED, DIMENSIONS DO NOT INCLUDE PLATING.

DENOTES CRITICAL CHARACTERISTICS.

DENOTES CPK DIMENSIONS - MINIMUM CPK VALUE

DENOTES A CHARACTERISTIC THAT PROVIDES AN INDICATION OF PROCESS PERFORMANCE IN PROCEDURE FOR MEASUREMENT (SEE LITTELFUSE INSPECTION INSTRUCTIONS).

DENOTES CP DIMENSIONS - MINIMUM CP VALUE

(SEE DIMENSIONAL LIMITATIONS SECTION ON DRAWING AND INITIALLY LOCATED TO ALLOW FOR MAXIMUM TOOL LIFE.

