

Excellent Integrated System Limited

Stocking Distributor

Click to view price, real time Inventory, Delivery & Lifecycle Information:

[Hirose Electric Co Ltd](#)
[HRUS-HT-1](#)

For any questions, you can email us directly:

sales@integrated-circuit.com



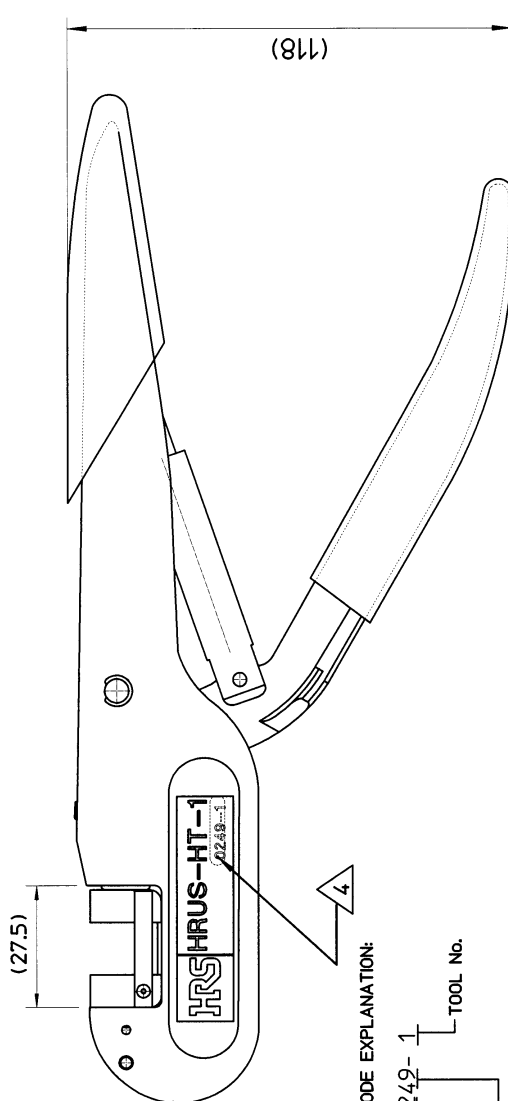
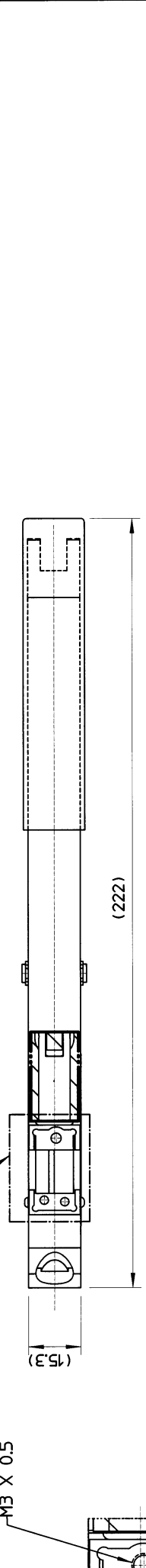
DWG. NO.	HRUS-HT-1	SHT.	1	REV.	B
----------	-----------	------	---	------	---

REVISIONS					
ZONE	REV.	DESCRIPTION	DATE	APPROVED	
	N/R	NEW RELEASE	2/10/03	Kim G	
	A	REVISED PER DCN# 0864	3/04/03	A.S.	
	B	REVISED PER DCN# 0872	5.13.03	A.S.	

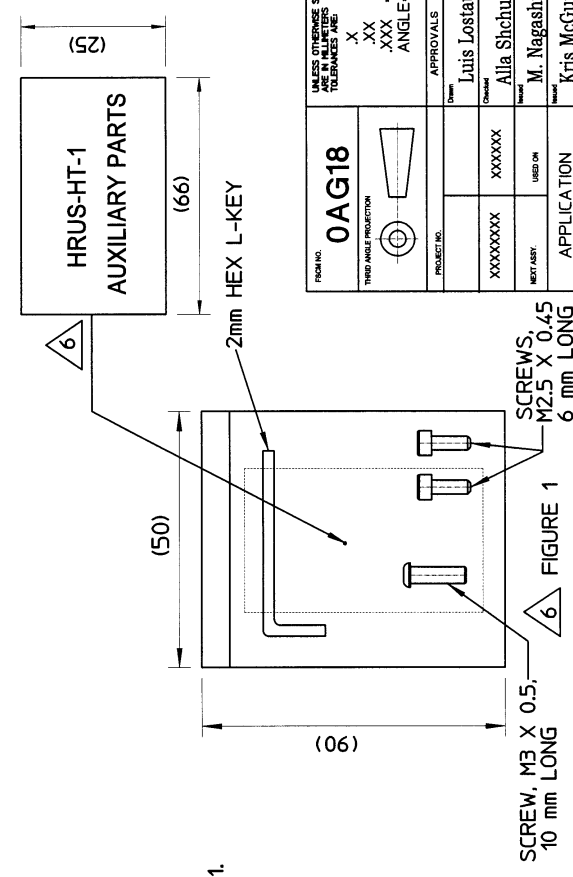
UNLESS OTHERWISE SPECIFIED DIMENSIONS ARE IN MILLIMETERS TOLERANCES ARE:

X	+0.1
.XX	+0.05
.XXX	+0.03
ANGLE	±1°

FORM NO. 0AG18
 THIRD ANGLE PROJECTION
 PROJECT NO. XXXXXXXX
 MFG. ASBY. USED ON
 APPLICATION



DATE CODE EXPLANATION:
 0249-1
 YEAR WEEK TOOL No.



CUSTOMER USE DRAWING

		HIROSE ELECTRIC (U.S.A.) INC SIMI VALLEY, CALIFORNIA 93065	
PART NUMBER HRUS-HT-1		CL NUMBER 5910-8500-2	
SIZE B		DWG NUMBER HRUS-HT-1	
DATE 02/06/03		REV. B	
APPROVALS Luis Lostaunau Alla Shechur M. Nagashima Kris McGuire		SCALE 1 OF 1	

ALL RIGHTS THEREIN ARE RESERVED, DUPLICATED, OR REPRODUCED IN ANY MANNER WITHOUT THE WRITTEN PERMISSION OF HIROSE ELECTRIC (U.S.A.), INC.

M3 X 0.5

RD BOX, SIZE: 254mm X 76mm X 51mm (10" X 3" X 2").
 TO BE USED WITH THE INTERCHANGABLE DIE SETS
 DF11 AND DF13 CONNECTOR SERIES.

KAGED IN THE ZIP-LOCK PLASTIC BAG AS SHOWN ON FIG. 1.
 ED AS SHOWN.

OPERATION OF THIS HAND TOOL, REFER TO

P/No. PS075.

L No.; SEE EXAMPLE FOR EXPLANATION.

ES WHEN LEVER IS IN 'OPEN' POSITION;

LIES WHEN THE LEVER IS IN 'CLOSED' POSITION.

E FOR REFERENCE ONLY.

PLANCING PER ANSI/ASME Y14.5M-1994

(SEE SPECIFIED)