

## Excellent Integrated System Limited

Stocking Distributor

Click to view price, real time Inventory, Delivery & Lifecycle Information:

[TDK Corporation](#)  
[ZCAT2017-0930-M](#)

For any questions, you can email us directly:

[sales@integrated-circuit.com](mailto:sales@integrated-circuit.com)

## EMC Components

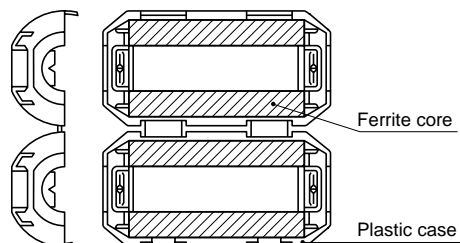
## ZCAT Series

### Clamp Filters For Cable

#### FEATURES

- Unique plastic case ensures simple, convenient installation and includes a self-holding mechanism to prevent slippage on cables.
- Ferrite core provides excellent absorption of high-frequency EMC.
- Highly effective as countermeasure against common mode EMC without adverse effect on signal quality.
- Large core size prevents saturation during large signal surges.

#### INTERNAL CONSTRUCTION



#### APPLICATIONS

Personal computers, word processors, monitors, hard disk drives, digital telephones, audio devices, electronic musical instruments, video games, copiers and facsimiles.

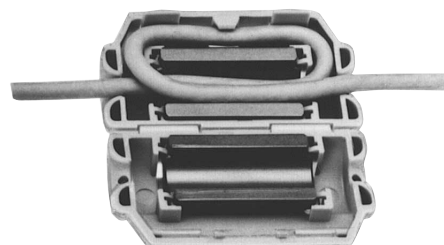
#### PRODUCT IDENTIFICATION

ZCAT 24 36 - 13 30 A - M - BK  
 (1) (2) (3) (4) (5) (6) (7) (8)

- (1) Series name
- (2) Outer dimensions(mm)
- (3) Length(mm)
- (4) Inner dimensions(mm)
- (5) Material code
- (6) Fixed type code
  - A: Cable fixed  
Hold the cable to secure it with the main body
  - AP: Cable fixed  
(with lock mechanism)
  - B: Clamp fixed
  - C: Cable coil securing type  
(Coil the cable one time within the case to fix it/with lock mechanism.)
  - D: Flat cable type
  - DT: Flat cable type (Hold with adhesive pad.)
  - Non code: Band fixed  
(Secure the cable and main body with the nylon belt.)
- (7) TDK internal code
  - M: Standard type
  - Non code: High impedance type
- (8) Outer color code
  - BK: Black
  - Non code: Gray



#### ZCAT-C TYPE



#### PACKAGING STYLE AND QUANTITIES

Part No.	Quantity
ZCAT3035	140 pieces/box
ZCAT2017-B	350 pieces/box
ZCAT2235	350 pieces/box
ZCAT2436	350 pieces/box
ZCAT2032	400 pieces/box
ZCAT2035	400 pieces/box
ZCAT2132	400 pieces/box
ZCAT2749	400 pieces/box
ZCAT1730	500 pieces/box
ZCAT2017	800 pieces/box
ZCAT1325	900 pieces/box
ZCAT1518	900 pieces/box
ZCAT1525	900 pieces/box
ZCAT4625-D	240 pieces/box
ZCAT6819-D	160 pieces/box

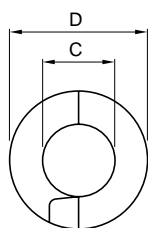
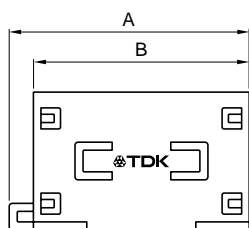
# EMC Components

## ZCAT Series

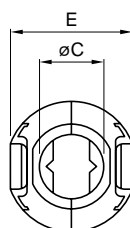
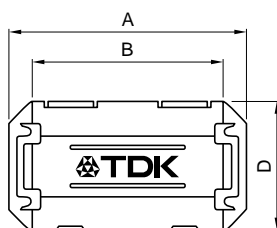
Clamp Filters  
For Cable

### SHAPES AND DIMENSIONS

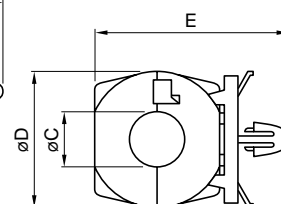
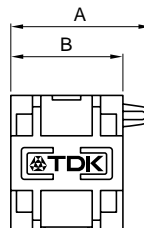
#### ZCAT TYPE



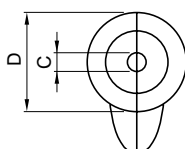
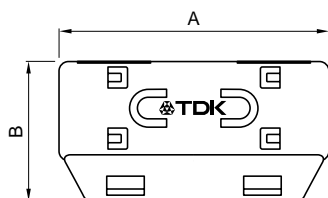
#### ZCAT-A, ZCAT-AP TYPE



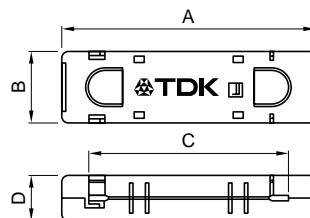
#### ZCAT-B TYPE



#### ZCAT-C TYPE



#### ZCAT-D TYPE



Applicable cable thickness: 1.3mm max.

Dimensions in mm

Part No.	A	B	øC	øD	E	Applicable cable outer dia.	Weight(g)	Impedance freq. characteristics Fig.
ZCAT1518-0730-M(-BK)*1	22±1	18±1	7±1	15±1	-	7max.	6	1
ZCAT1518-0730(BK)*2	22±1	18±1	7±1	15±1	-	7max.	6	2
ZCAT2017-0930-M(-BK)	21±1	17±1	9±1	20±1	-	9max.	11	3
ZCAT2032-0930-M(-BK)*1	36±1	32±1	9±1	19.5±1	-	9max.	22	4
ZCAT2032-0930(-BK)*2	36±1	32±1	9±1	19.5±1	-	9max.	22	5
ZCAT2132-1130-M(-BK)*1	36±1	32±1	11±1	20.5±1	-	11max.	22	6
ZCAT2132-1130(-BK)*2	36±1	32±1	11±1	20.5±1	-	11max.	22	7
ZCAT3035-1330-M(-BK)*1	39±1	34±1	13±1	30±1	-	13max.	63	8
ZCAT3035-1330(-BK)*2	39±1	34±1	13±1	30±1	-	13max.	63	9
ZCAT1525-0430AP-M(-BK)	25±1	20±1	4±1	15±1	11.5±1	2.5 to 4(USB)	7	6
ZCAT1325-0530A-M(-BK)*1	25±1	20±1	5±1	12.8±1	11.2±1	3 to 5(USB)	7	6
ZCAT1325-0530A(-BK)	25±1	20±1	5±1	12.8±1	11.2±1	3 to 5(USB)	7	7
ZCAT1730-0730A-M(-BK)	30±1	23±1	7±1	16.5±1	15±1	4 to 7(USB/IEEE 1394)	12	6
ZCAT2035-0930A-M(-BK)*1	35±1	28±1	9±1	19.5±1	17.4±1	6 to 9	22	4
ZCAT2035-0930A(-BK)	35±1	28±1	9±1	19.5±1	17.4±1	6 to 9	22	5
ZCAT2235-1030A-M(-BK)	35±1	28±1	10±1	21.5±1	20±1	8 to 10	27	4
ZCAT2436-1330A-M(-BK)	36±1	29±1	13±1	23.5±1	22±1	10 to 13	29	10
ZCAT2017-0930B-M(-BK)	21±1	17±1	9±1	20±1	28.5±1	9max.	12	3
ZCAT2749-0430C-M(-BK)	49±1	27±1	4.5±1	19.5±1	-	4.5max.	26	11
ZCAT4625-3430D(-BK)	45.5±1	24.5±1	34±1	12±1	-	For 26 wires flat cable	32	12
ZCAT4625-3430DT(-BK)*3	45.5±1	24.5±1	34±1	13±1	-	For 26 wires flat cable	32	12
ZCAT6819-5230D(-BK)	67.5±1	18.5±1	52±1	16±1	-	For 40 wires flat cable	58	12
ZCAT6819-5230DT(-BK)*3	67.5±1	18.5±1	52±1	17±1	-	For 40 wires flat cable	58	12

\*1 Set M marking on product.

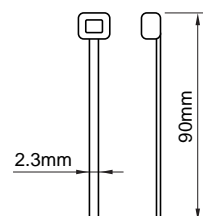
\*2 These products are delivered with fixed band.

\*3 ZCAT-DT type: Adapted for flat cables and hold with adhesive pad.

• ZCAT-B type: Clamp fixed type installation hole diameter ø4.8 to 4.9mm, thickness of board 0.5 to 2mm.

• ZCAT-AP, ZCAT-C type: Once closed, the case will not be easily opened manually.

### STRUCTURE OF THE MOUNTING BAND



Material: 66-nylon(natural color)

# EMC Components

# ZCAT Series

Clamp Filters  
For Cable

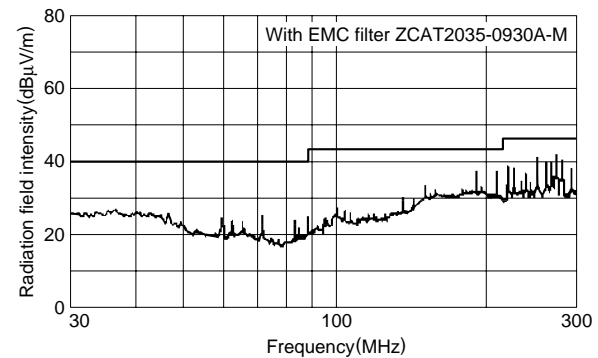
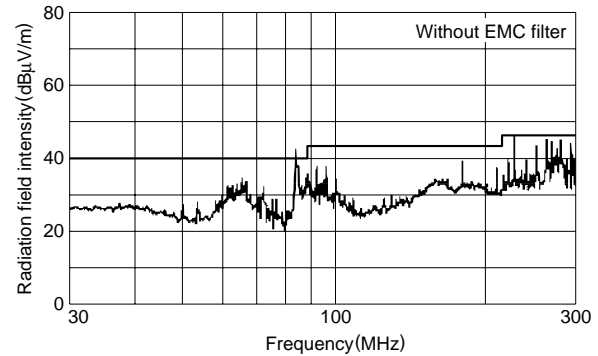
## ELECTRICAL CHARACTERISTICS

Part No.	Impedance (Ω)min.[50 to 500MHz]
ZCAT1518-0730-M	35
ZCAT2017-0930-M	35
ZCAT2032-0930-M	80
ZCAT2132-1130-M	50
ZCAT3035-1330-M	100
ZCAT1525-0430AP-M	50
ZCAT1325-0530A-M	50
ZCAT1730-0730A-M	50
ZCAT2035-0930A-M	80
ZCAT2235-1030A-M	80
ZCAT2436-1330A-M	50
ZCAT2017-0930B-M	35
ZCAT2749-0430C-M	80
ZCAT4625-3430D(T)	35
ZCAT6819-5230D(T)	35

• Test conditions: R-X meter at unloaded condition, ø1mm solder plated copper wire passes through.

## TYPICAL EMC SUPPRESSION EFFECTS

### RADIATION LEVEL vs. FREQUENCY CHARACTERISTICS



## TYPICAL ELECTRICAL CHARACTERISTICS

### IMPEDANCE vs. FREQUENCY CHARACTERISTICS

ZCAT1518-0730-M

ZCAT1518-0730

ZCAT2017-0930-M

ZCAT2017-0930B-M

ZCAT2032-0930-M

ZCAT2035-0930A-M

ZCAT2235-1030A-M

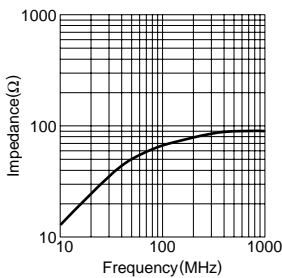


Fig.1

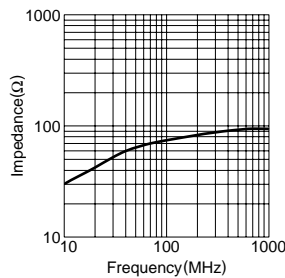


Fig.2

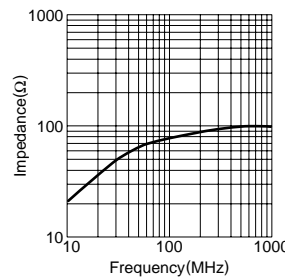


Fig.3

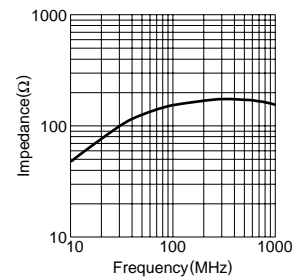


Fig.4

ZCAT2032-0930  
ZCAT2035-0930A

ZCAT2132-1130-M  
ZCAT1325-0530A-M  
ZCAT1525-0430AP-M  
ZCAT1730-0730A-M

ZCAT2132-1130  
ZCAT1325-0530A

ZCAT3035-1330-M

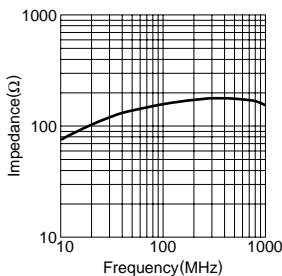


Fig.5

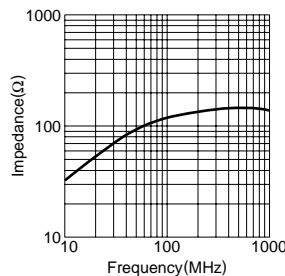


Fig.6

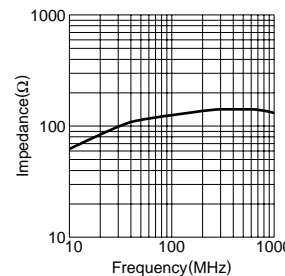


Fig.7

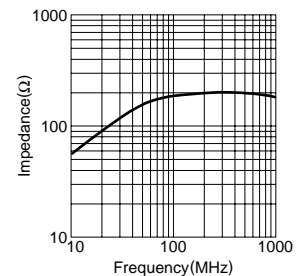


Fig.8

# EMC Components

# ZCAT Series

Clamp Filters  
 For Cable

## TYPICAL ELECTRICAL CHARACTERISTICS IMPEDANCE vs. FREQUENCY CHARACTERISTICS

**ZCAT3035-1330**

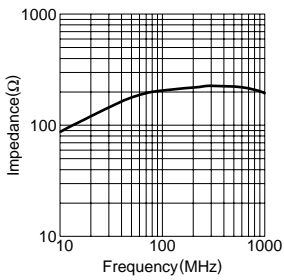


Fig.9

**ZCAT2436-1330A-M**

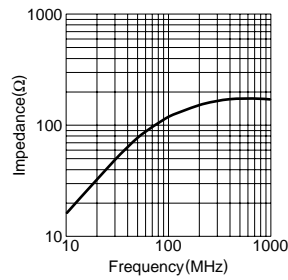


Fig.10

**ZCAT2749-0430C-M(2TS)**

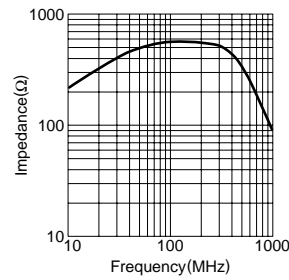


Fig.11

**ZCAT4625-3430D  
 ZCAT6819-5230D**

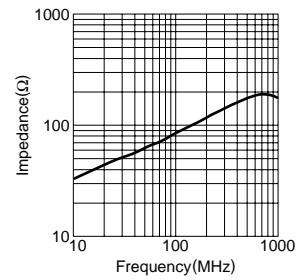


Fig.12