

Excellent Integrated System Limited

Stocking Distributor

Click to view price, real time Inventory, Delivery & Lifecycle Information:

[Eaton \(formerly Cooper Bussmann\)](#)
[BK/HHB](#)

For any questions, you can email us directly:

sales@integrated-circuit.com

COOPER

Bussmann

1/4" x 7/8" to 1 1/4" In-Line Fuse Holders HHB Series

Description

- For 1/4" x 7/8" to 1 1/4" fuses
- Accepts #16 to #12 AWG copper wire
- Simple crimp assembly
- "Snap-Lock" feature provides strong positive union
- High visibility yellow color
- Recommended crimp tools:
 - Thomas & Betts – ERG-2001
 - Channelock No. 909
 - General Electric – U.S. & Metric Electrical Terminal Tool
- UL flammability rating 94 V2

Environmental Data

- Pull Force: 5 pounds minimum to separate fuseholder housing with fuse inside

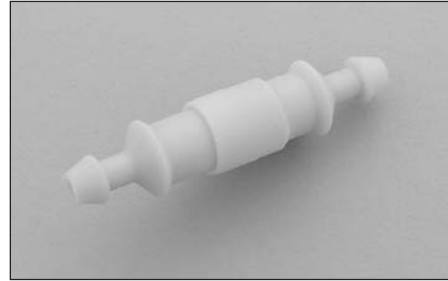
Ordering

Specify packaging code

- Insert packaging code prefix before part number.
E.g. BK/HHB-R

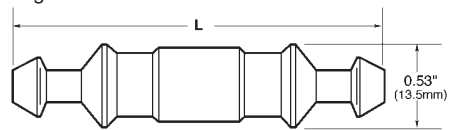
Specify option codes if desired

- Drop "-R" suffix when ordering. E.g. BK/HHB-Y408



Dimensions - in (mm)

Drawing Not to Scale



Fuse Length	"L" with fuse installed
7/8"	2.100 Max.
1"	2.250 Max.
1 1/4"	2.420 Max.

Specifications		
Part Number	Volts	Amps
HHB-R*	32	30 max

*RoHS compliant construction.

Component	Material
Body	Nylon
Crimp	Copper Tin-Plated

Packaging Code	
Packaging Code Prefix	Description
Blank	10 fuse holders packed into a carton
BK	1,000 fuse holders packed into a cardboard shelf package

Option Code	
Option Code	Description
Y408**†	#14 AWG insulated wire with 8 inch yellow leads
R408†	#14 AWG insulated wire with 8 inch red leads
B408**†	#14 AWG insulated wire with 8 inch black leads
Y419**†	#14 AWG insulated wire with 19 inch yellow leads
R419**†	#14 AWG insulated wire with 19 inch red leads
B419**†	#14 AWG insulated wire with 19 inch black leads

**Not available in RoHS compliant construction.

† Drop "-R" suffix when ordering these options.

The only controlled copy of this Data Sheet is the electronic read-only version located on the Cooper Bussmann Network Drive. All other copies of this document are by definition uncontrolled. This bulletin is intended to clearly present comprehensive product data and provide technical information that will help the end user with design applications. Cooper Bussmann reserves the right, without notice, to change design or construction of any products and to discontinue or limit distribution of any products. Cooper Bussmann also reserves the right to change or update, without notice, any technical information contained in this bulletin. Once a product has been selected, it should be tested by the user in all possible applications.

Life Support Policy: Cooper Bussmann does not authorize the use of any of its products for use in life support devices or systems without the express written approval of an officer of the Company. Life support systems are devices which support or sustain life, and whose failure to perform, when properly used in accordance with instructions for use provided in the labeling, can be reasonably expected to result in significant injury to the user.