

Excellent Integrated System Limited

Stocking Distributor

Click to view price, real time Inventory, Delivery & Lifecycle Information:

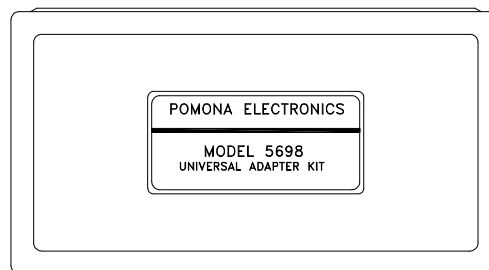
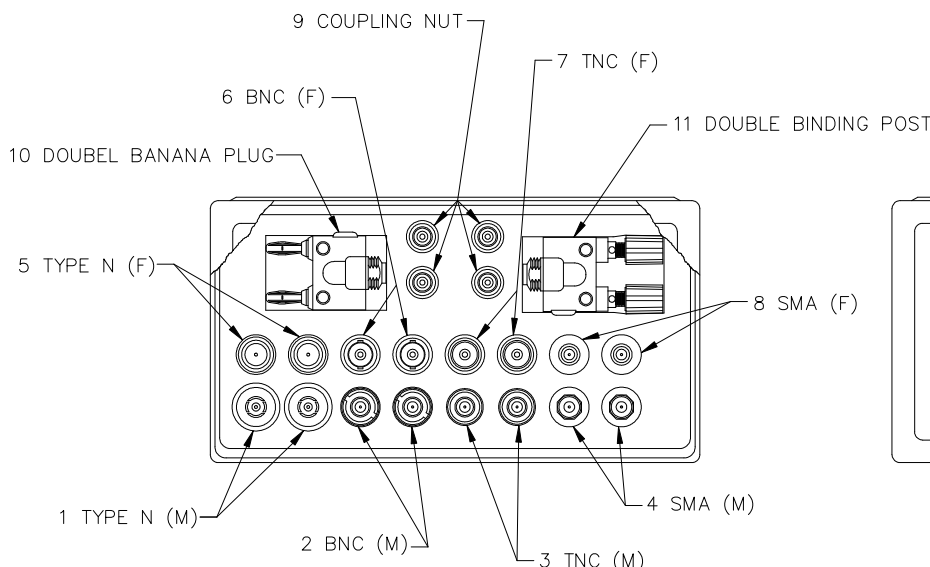
[Pomona Electronics](#)
[5698](#)

For any questions, you can email us directly:

sales@integrated-circuit.com

FEATURES:

Kit allows users to make their own adapters combinations, such as SMA to BNC or BNC to double banana plugs. Adapter's ends are joined with coupling nuts. Simply choose your combination. All connectors feature gold plated center contacts and silver plated bodies



RATINGS:

Operating Temperature:

Items 1 through 9:

-67°F to +302°F (-55°C to +150°C).

Items 10 and 11:

+122°F (+50°C)

Nominal Impedance:

Items 1 through 9: 50 Ohms.

VSWR:

Items 1 through 9: 1.2:1 (DC-1GHz)

Frequency Range:

Items 1 through 9: DC-1GHz

Items 10 and 11: DC-300 MHz



Order Example: 5698
(Universal Adapter Kit)

All dimensions are in inches. Tolerances (except noted): .xx = ±.02" (.51 mm), .xxx = ±.005" (.127 mm).
 All specifications are to the latest revisions. Specifications are subject to change without notice.
 Registered trademarks are the property of their respective companies.



Model 5698 - Universal Adapter Kit
Model 5749 - Universal Adapter Cable



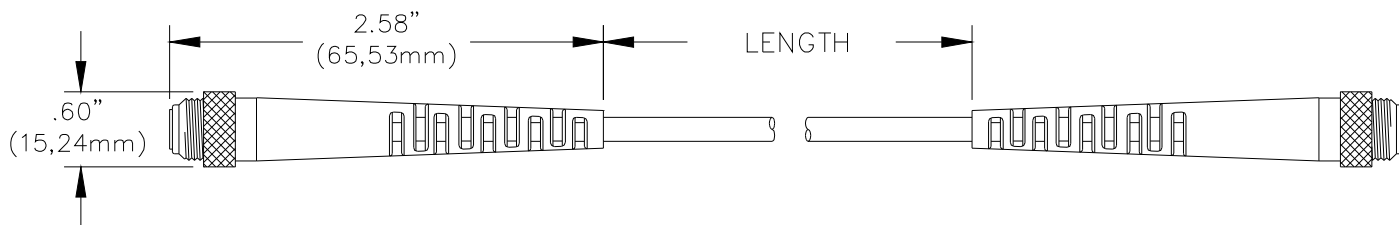
Item	Description	Model	Material
1	"N" male	5734	Center Contact: Gold Plated Brass, Dielectric: Teflon, Shell: Sliver Plated Brass
2	BNC male	5735	Center Contact: Gold Plated Phosphor Bronze, Dielectric: Teflon, Shell: Sliver Plated Brass
3	TNC male	5736	Center Contact: Gold Plated Phosphor Bronze, Dielectric: Teflon, Shell: Sliver Plated Brass
4	SMA male	5737	Center Contact: Gold Plated Phosphor Bronze, Dielectric: Teflon, Shell: Sliver Plated Brass
5	"N" female	5738	Center Contact: Gold Plated Phosphor Bronze, Dielectric: Teflon, Shell: Sliver Plated Brass
6	BNC female	5739	Center Contact: Gold Plated Phosphor Bronze, Dielectric: Teflon, Shell: Sliver Plated Brass
7	TNC female	5740	Center Contact: Gold Plated Phosphor Bronze, Dielectric: Teflon, Shell: Sliver Plated Brass
8	SMA female	5741	Center Contact: Gold Plated Phosphor Bronze, Dielectric: Teflon, Shell: Sliver Plated Brass
9	Coupler	5742	Center Contact: Gold Plated Phosphor Bronze, Dielectric: Teflon, Shell: Sliver Plated Brass
10	Double Banana Plug	5743	Spring: Beryllium copper ASTM B194, alloy 172 cond. Ht. Plug Body: Brass per QQ-B-626, alloy 360, ½ hard. Finish: Nickel plated per QQ-N-290, class2, 200/300 microinches Insulation: ABS. Color: Black Center Contact: Gold plated brass Dielectric: Teflon Shell: Silver plated brass
11	Double Binding Post	5744	Body: Brass per QQ-B-626, alloy 360, ½ hard Finish: Nickel plated per QQ-N-290, class 2, 200/300 microinches Insulation: Polycarbonate. Color: one black, one red Insulation, Body: ABS. Color: Black Center Contact: Gold plated phosphor bronz Dielectric: Teflon Shell: Silver plated brass

All dimensions are in inches. Tolerances (except noted): .xx = ±.02" (.51 mm), .xxx = ± .005" (.127 mm).
 All specifications are to the latest revisions. Specifications are subject to change without notice.
 Registered trademarks are the property of their respective companies.

Sales: 800-490-2361 Fax: 425-446-5844 Technical Support: technicalsupport@pomonatest.com
 For "Where to Buy" information, visit the Pomona web site at www.pomonaelectronics.com



Model 5698 - Universal Adapter Kit
Model 5749 - Universal Adapter Cable

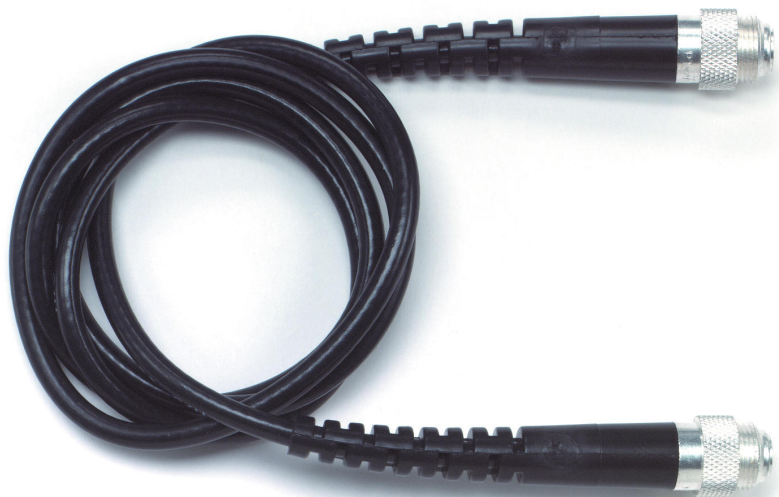


FEATURES:

- Universal Adapter Cable used with Pomona Universal Adapter Kits, models 5698 and 5748.

MATERIALS:

Coupler Shell (each end): Brass, Nickel Plated
Coupler Conductor: Phosphor Bronze, Gold Plated
Strain Relief Boot: PVC Black
Cable: RG58C/U, O.D.: 0.195"
Frequency: DC – 1.2GHz.
Impedance: 50 Ohms



RATINGS:

Operating Voltage: Hands free usage in controlled voltage environments: 500 Vrms maximum. *For CE compliance:* not intended for hand-held use at voltages above 33 Vrms/70 Vdc.

Operating Temperature: +122°F (+50°C) Max.

ORDERING INFORMATION: Model 5749-Length

Length =: 24" (60,96cm), 36" (91,44cm), 48" (121,92cm), 60" (152.40cm) & 72" (182,88cm)

Order Example: 5749-48 (Cable ONLY, 48")

All dimensions are in inches. Tolerances (except noted): .xx = ±.02" (.51 mm), .xxx = ±.005" (.127 mm).
 All specifications are to the latest revisions. Specifications are subject to change without notice.
 Registered trademarks are the property of their respective companies.