

## **Excellent Integrated System Limited**

Stocking Distributor

Click to view price, real time Inventory, Delivery & Lifecycle Information:

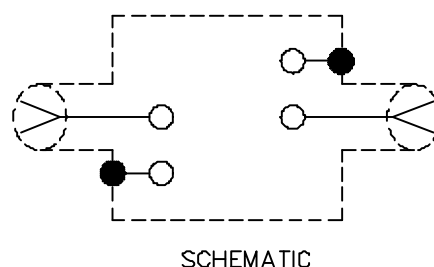
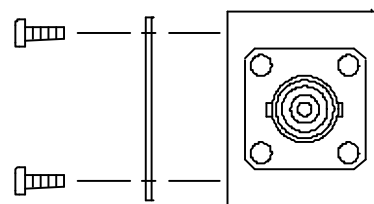
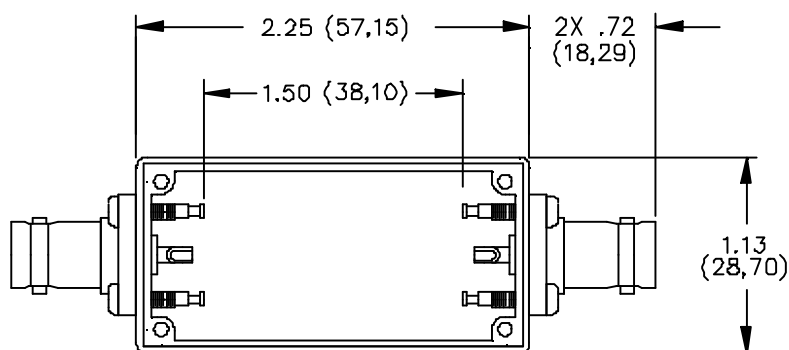
[Pomona Electronics](#)  
[2390](#)

For any questions, you can email us directly:

[sales@integrated-circuit.com](mailto:sales@integrated-circuit.com)

Pomona®

**Model 2390**  
**Size A Aluminum Box With Cover**  
**BNC Female/Female**



**MATERIALS:**

Connector: BNC Receptacle

Body: Tarnish Resistant Plating, Center Contact: Male - Gold Plated Brass, Female - Gold Plated Beryllium Copper

Solder Turret Terminal Screws: Steel, 4 ea. #4-40

Shielded Housing: Die cast aluminum alloy A380 or A384

Finish: Blue paint per Federal Standard 595 #25109 over Phosphoric Etch

Cover: .040 Thick aluminum #1100-H14

Finish: Clear Anodized

Screws: Steel 4 ea. #2-32 x 1/4" Pan Head, self-tapping.

**RATINGS:**

Operating Voltage: Inner conductor/shield: 335 VRMS Max.

Operating Temperature: -55°C to +150°C

Nominal Impedance: 50 Ohms

**ORDERING INFORMATION: Model 2390**

All dimensions are in inches. Tolerances (except noted): .xx = ±.02" (.51 mm), .xxx = ±.005" (.127 mm).

All specifications are to the latest revisions. Specifications are subject to change without notice.

Registered trademarks are the property of their respective companies. Made in USA