

Excellent Integrated System Limited

Stocking Distributor

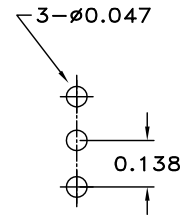
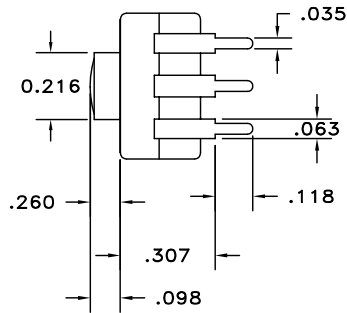
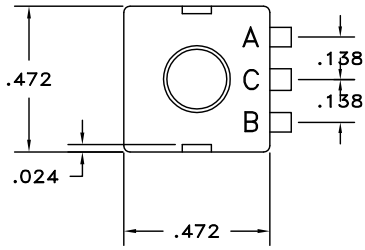
Click to view price, real time Inventory, Delivery & Lifecycle Information:

[Judco Manufacturing, Inc.](#)
[50-0041-00](#)

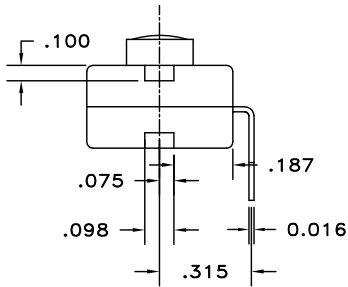
For any questions, you can email us directly:

sales@integrated-circuit.com

LTR	EN	DESCRIPTION	APPR	BY	DATE
A	-	INITIAL RELEASE	RB	NH	11-10-03
A1	-	ADDED ELECTRICAL RATING 12VDC, 500mA	MT	DC	08-27-12

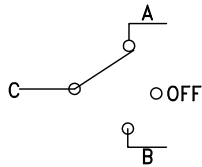


RECOMMENDED MOUNTING PATTERN




JUDCO INVENTORY NO. 50-0041-00
 SWITCH TYPE: SPDT, J 977-5 (ON A- OFF ON B)
 ELECTRICAL RATING: 12 VDC, 500mA

CUSTOMER: _____
 CUSTOMER: _____
 APPROVED BY: _____
 DATE: _____



SCHEMATIC

DIMENSIONS IN INCHES DIMENSIONS ARE REFERENCE		 HARBOR CITY CALIFORNIA	
DRAWN: NH 11-10-03		TITLE MINI FLPK, J977-5	
APPR: KJ 08-24-12		ON-OFF-ON, 3 RA TRMS	
ENGG: IS 08-24-12		DWG. NO. 1415-502	
1415U502A1.DWG		SHEET 1 OF 1	

This document embodies a product, component, and/or design proprietary to JUDCO MANUFACTURING INC., and which is protected either as a trade secret, by U.S. Patent, or by copyright. It may not be used in any way without written express consent of JUDCO MANUFACTURING INC.