

Excellent Integrated System Limited

Stocking Distributor

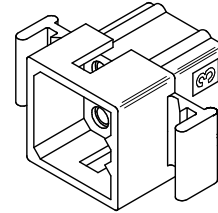
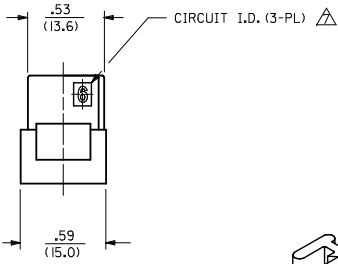
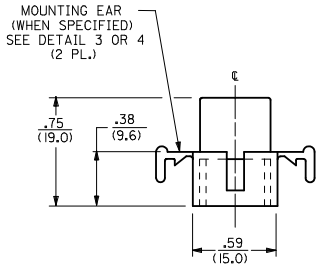
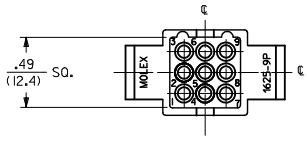
Click to view price, real time Inventory, Delivery & Lifecycle Information:

[Molex Connector Corporation](#)

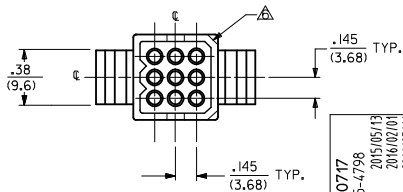
[0003062092](#)

For any questions, you can email us directly:

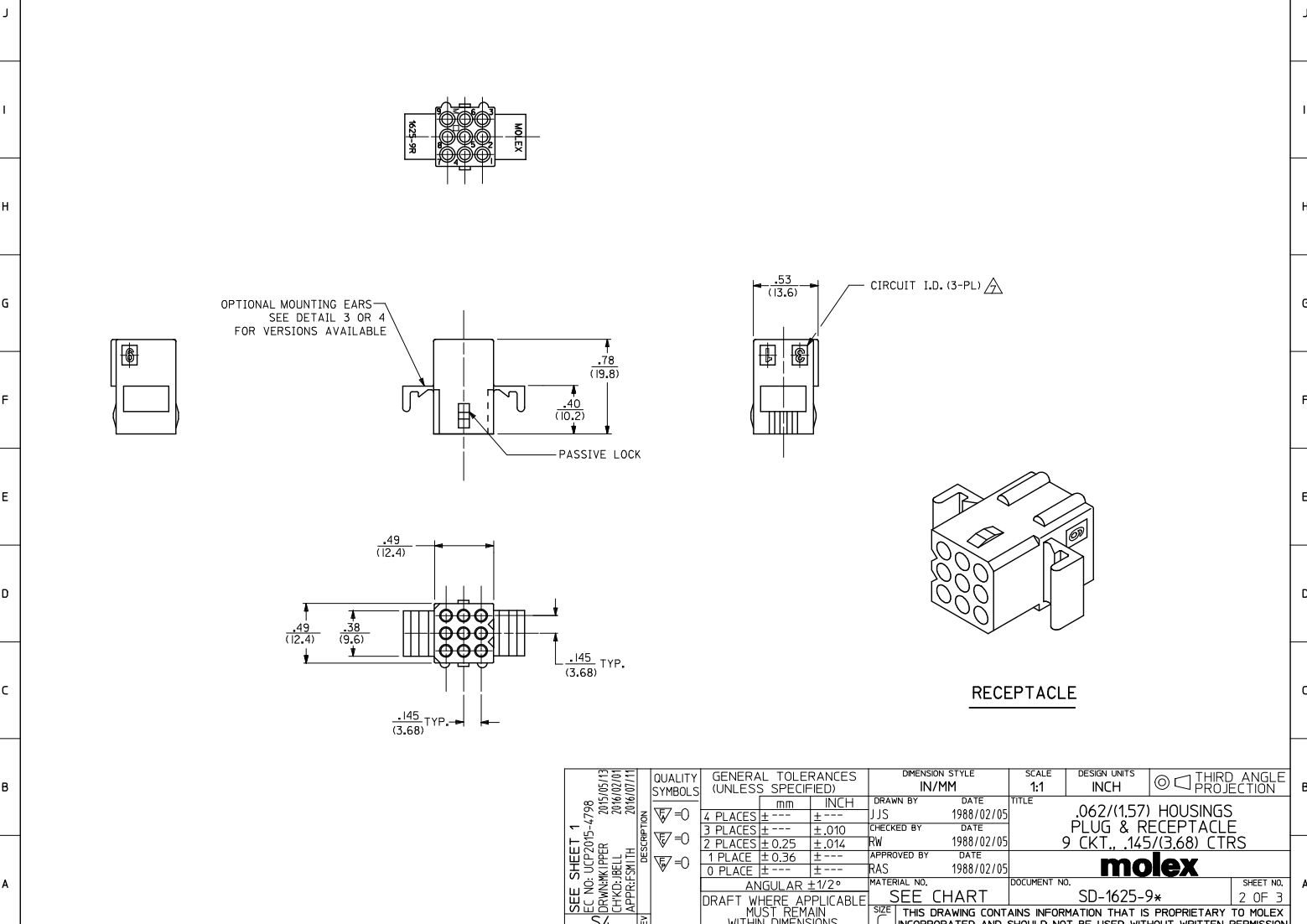
sales@integrated-circuit.com



PLUG



ADD 46999-0717 EC NO: UCP2015-4798 DRAWN BY: 2015/05/13 CHKD: BELL 2016/02/01 APPR: SMITH 2016/07/11	QUALITY SYMBOLS ▽=0 ▽=0 ▽=0	GENERAL TOLERANCES (UNLESS SPECIFIED)		DIMENSION STYLE IN/MM		SCALE 1:1	DESIGN UNITS INCH	THIRD ANGLE PROJECTION
		mm	INCH	DRAWN BY JJS	DATE 1988/02/05	TITLE .062/(1.57) HOUSINGS PLUG & RECEPTACLE 9 CKT., .145/(3.68) CTRS		
REV S4	DESCRIPTION	4 PLACES	± .010	± .010	CHECKED BY RW	DATE 1988/02/05	moLEX	SHEET NO. 1 OF 3
		3 PLACES	± .010	± .010	APPROVED BY RAS	DATE 1988/02/05		
DRAFT WHERE APPLICABLE MUST REMAIN WITHIN DIMENSIONS		ANGULAR ±1/2°		MATERIAL NO.		DOCUMENT NO. SD-1625-9*		
		SEE CHART		SIZE		THIS DRAWING CONTAINS INFORMATION THAT IS PROPRIETARY TO MOLEX INCORPORATED AND SHOULD NOT BE USED WITHOUT WRITTEN PERMISSION		



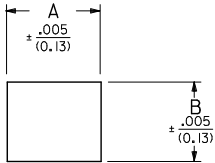
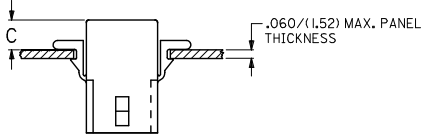
SEE SHEET 1 REC NO: UCP2015-4798 DRAWN BY: 2015/05/13 CHKD: BELL 2016/02/01 APPR: SMITH 2016/07/11 S4 REV	QUALITY SYMBOLS	GENERAL TOLERANCES (UNLESS SPECIFIED)	DIMENSION STYLE	SCALE	DESIGN UNITS	THIRD ANGLE PROJECTION
	▽=0	mm INCH	IN/MM	1:1	INCH	
	▽=0	4 PLACES ± --- ± ---	DRAWN BY DATE			TITLE
	▽=0	3 PLACES ± --- ± .010	CHECKED BY DATE	JJS 1988/02/05		.062/(1.57) HOUSINGS PLUG & RECEPTACLE 9 CKT., .145/(3.68) CTRS
		2 PLACES ± 0.25 ± .014	APPROVED BY DATE			molex
		1 PLACE ± 0.36 ± ---				DOCUMENT NO.
		0 PLACE ± --- ± ---				SD-1625-9*
		ANGULAR ± 1/2°	MATERIAL NO.			SHEET NO.
		DRAFT WHERE APPLICABLE MUST REMAIN WITHIN DIMENSIONS	SEE CHART			2 OF 3
			SIZE	THIS DRAWING CONTAINS INFORMATION THAT IS PROPRIETARY TO MOLEX INCORPORATED AND SHOULD NOT BE USED WITHOUT WRITTEN PERMISSION		

9 CIRCUIT PLUG				
PART NO.	ENG. NO.	EARS	MATERIAL	COLOR
03-06-2091	1625-9P	STANDARD	A	NATURAL
03-06-2092	1625-9P1	NONE	A	NATURAL
X 23-06-2091	1625-9P-C	STANDARD	C	NATURAL
X 23-06-2092	1625-9P1-C	NONE	C	NATURAL
X 04-06-6091	1625-9P1-B	NONE	B	NATURAL
03-06-7091	1625-9PBK	STANDARD	A	BLACK
46999-0717	1625-9P4	PREBENT	A	NATURAL

9 CIRCUIT RECEPTACLE				
PART NO.	ENG. NO.	EARS	MATERIAL	COLOR
03-06-1091	1625-9R	STANDARD	A	NATURAL
03-06-1092	1625-9R1	NONE	A	NATURAL
X 23-06-1092	1625-9R1-C	NONE	C	NATURAL
03-06-6092	1625-9R1BK	NONE	A	BLACK
50-36-1871	1625-9R4	PREBENT	A	NATURAL
X 50-36-1872	1625-9R4-C	PREBENT	C	NATURAL

X=NOT TOOLED

X=NOT TOOLED

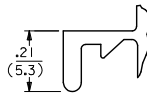


RECEP.	.650 (16.51)	.552 (14.02)	.21 (5.3)	.22 (5.6)
PLUG	.752 (19.10)	.615 (15.62)	.20 (5.1)	.21 (5.3)
PART	DIM. A	DIM. B	DIM. C (STANDARD EAR)	DIM. C (PREBENT EAR)

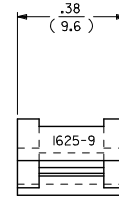
RECOMMENDED HOLE PATTERN

NOTES:

- MATERIAL CODES:
A-NYLON TYPE 6/6, 94V-2
B-NYLON TYPE 6/6, 94V-0
C-POLYPROPYLENE, 94V-0
 - FINISH: NONE
 - PRODUCT SPECIFICATION: PS-02-06
 - PACKAGING SPECIFICATION: PK-1625-003
 - HOUSINGS OF USE WITH MOLEX .062 DIAMETER TERMINALS.
- △ SOME PARTS MAY HAVE THIS CORNER CHAMFERED.
- △ ETCHED CIRCUIT I.D. NUMBERS ON HOUSING MAY OR MAY NOT BE PRESENT.
- PARTS CONFORM TO CLASS B REQUIREMENTS OF COSMETIC SPECIFICATION PS-45499-002.



DETAIL 3
STANDARD MOUNTING EAR
(SCALE 4x1)



DETAIL 4
PREBENT MOUNTING EAR
(SCALE 4x1)

SEE SHEET 1 EC NO: UCP2015-4798 DRAWN/PPER 2015/05/13 CHKD/BELL 2016/02/01 APPR/SMT 2016/07/11	QUALITY SYMBOLS ▽=0 ▽=0 ▽=0	GENERAL TOLERANCES (UNLESS SPECIFIED)		DIMENSION STYLE IN/MM		SCALE 1:1	DESIGN UNITS INCH	THIRD ANGLE PROJECTION	
		4 PLACES ± --- ± ---	3 PLACES ± --- ± .010	DRAWN BY JJS	DATE 1988/02/05	TITLE .062/(1.57) HOUSINGS PLUG & RECEPTACLE 9 CKT., .145/(3.68) CTRS molex SD-1625-9* SHEET NO. 3 OF 3			
		2 PLACES ± 0.25 ± .014	1 PLACE ± 0.36 ± ---	CHECKED BY RW	DATE 1988/02/05				
		0 PLACE ± --- ± ---	ANGULAR ± 1/2°	APPROVED BY RAS	DATE 1988/02/05				
DRAFT WHERE APPLICABLE MUST REMAIN WITHIN DIMENSIONS		SEE CHART		MATERIAL NO. DOCUMENT NO.					