

Excellent Integrated System Limited

Stocking Distributor

Click to view price, real time Inventory, Delivery & Lifecycle Information:

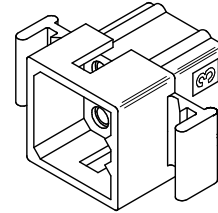
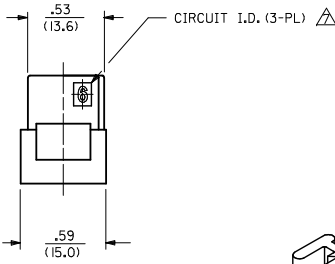
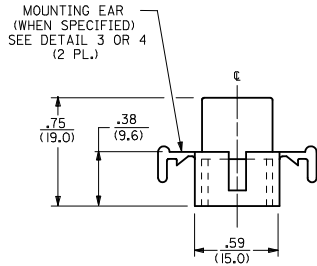
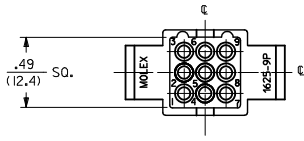
[Molex Connector Corporation](#)

[0003061092](#)

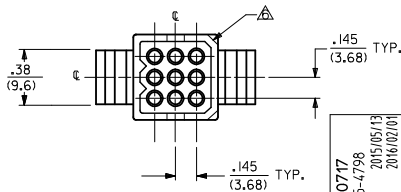
For any questions, you can email us directly:

sales@integrated-circuit.com

13 12 11 10 9 8 7 6 5 4 3 2 1

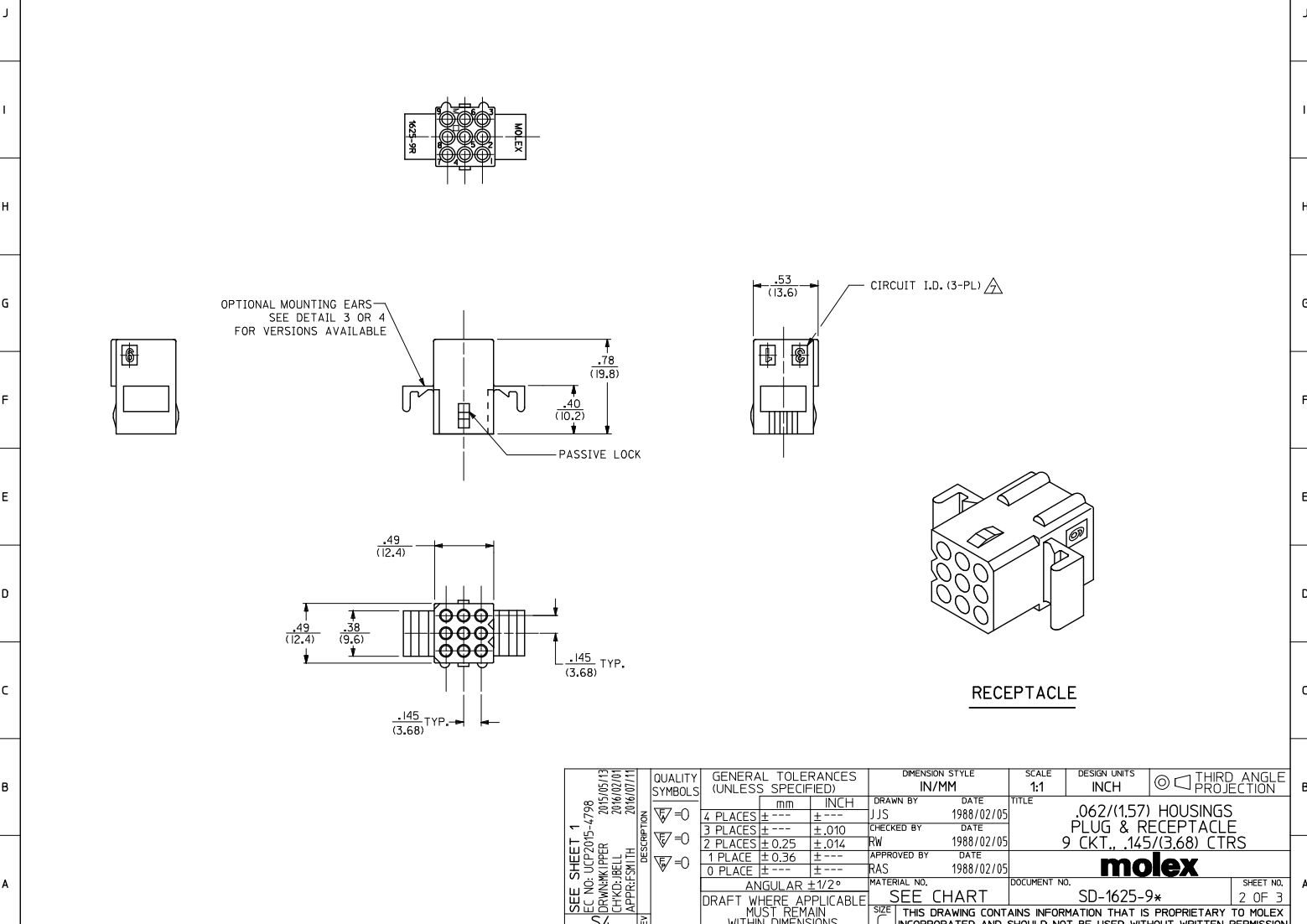


PLUG



ADD: 46999-0717 EC NO: UCP2015-4798 DRAWN BY: 2015/05/13 CHKD: BELL 2016/02/01 APPR: SMITH 2016/07/11	QUALITY SYMBOLS ▽=0 ▽=0 ▽=0	GENERAL TOLERANCES (UNLESS SPECIFIED)		DIMENSION STYLE		SCALE	DESIGN UNITS	THIRD ANGLE PROJECTION	
		mm	INCH	IN/MM		1:1	INCH		
S4	DESCRIPTION	4 PLACES	±---	±---	DRAWN BY	DATE	TITLE .062/(1.57) HOUSINGS PLUG & RECEPTACLE 9 CKT., .145/(3.68) CTRS molex DOCUMENT NO. SD-1625-9* SHEET NO. 1 OF 3		
		3 PLACES	±---	±.010	CHECKED BY	DATE			
		2 PLACES	±0.25	±.014	RW	1988/02/05			
		1 PLACE	±0.36	±---	APPROVED BY	DATE			
0 PLACE	±---	±---	RAS	1988/02/05	MATERIAL NO.		INCORPORATED AND SHOULD NOT BE USED WITHOUT WRITTEN PERMISSION		
DRAFT WHERE APPLICABLE MUST REMAIN WITHIN DIMENSIONS		ANGULAR ±1/2°		SEE CHART		SIZE C			

12 11 10 9 8 7 6 5 4 3 2 1



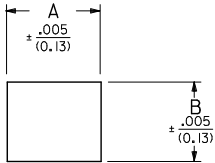
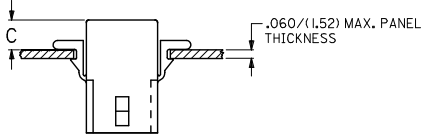
SEE SHEET 1 EC NO: UCP2015-4798 DRAWN BY: 2015/05/13 CHKD: BELL 2016/02/01 APPR: SMITH 2016/07/11	QUALITY SYMBOLS ▽=0 ▽=0 ▽=0	GENERAL TOLERANCES (UNLESS SPECIFIED)		DIMENSION STYLE		SCALE	DESIGN UNITS	THIRD ANGLE PROJECTION
		mm	INCH	IN/MM		1:1	INCH	
REV S4	DESCRIPTION	4 PLACES	± .005	± .005	DRAWN BY	DATE	TITLE	
		3 PLACES	± .010	± .010	CHECKED BY	DATE	.062/(1.57) HOUSINGS PLUG & RECEPTACLE 9 CKT., .145/(3.68) CTRS	
		2 PLACES	± 0.25	± .014	APPROVED BY	DATE	molex	
		1 PLACE	± 0.36	± .014	RAS	1988/02/05		
		0 PLACE	± .010	± .010	ANGULAR ± 1/2°		SD-1625-9*	2 OF 3
DRAFT WHERE APPLICABLE MUST REMAIN WITHIN DIMENSIONS		SEE CHART		THIS DRAWING CONTAINS INFORMATION THAT IS PROPRIETARY TO MOLEX INCORPORATED AND SHOULD NOT BE USED WITHOUT WRITTEN PERMISSION				

9 CIRCUIT PLUG				
PART NO.	ENG. NO.	EARS	MATERIAL	COLOR
03-06-2091	1625-9P	STANDARD	A	NATURAL
03-06-2092	1625-9P1	NONE	A	NATURAL
X 23-06-2091	1625-9P-C	STANDARD	C	NATURAL
X 23-06-2092	1625-9P1-C	NONE	C	NATURAL
X 04-06-6091	1625-9P1-B	NONE	B	NATURAL
03-06-7091	1625-9PBK	STANDARD	A	BLACK
46999-0717	1625-9P4	PREBENT	A	NATURAL

9 CIRCUIT RECEPTACLE				
PART NO.	ENG. NO.	EARS	MATERIAL	COLOR
03-06-1091	1625-9R	STANDARD	A	NATURAL
03-06-1092	1625-9R1	NONE	A	NATURAL
X 23-06-1092	1625-9R1-C	NONE	C	NATURAL
03-06-6092	1625-9R1BK	NONE	A	BLACK
50-36-1871	1625-9R4	PREBENT	A	NATURAL
X 50-36-1872	1625-9R4-C	PREBENT	C	NATURAL

X=NOT TOOLED

X=NOT TOOLED

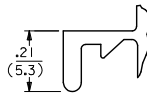


RECEP.	.650 (16.51)	.552 (14.02)	.21 (5.3)	.22 (5.6)
PLUG	.752 (19.10)	.615 (15.62)	.20 (5.1)	.21 (5.3)
PART	DIM. A	DIM. B	DIM. C (STANDARD EAR)	DIM. C (PREBENT EAR)

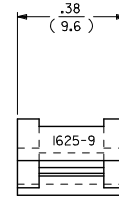
RECOMMENDED HOLE PATTERN

NOTES:

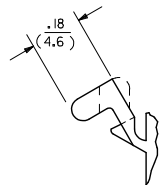
- MATERIAL CODES:
A-NYLON TYPE 6/6, 94V-2
B-NYLON TYPE 6/6, 94V-0
C-POLYPROPYLENE, 94V-0
 - FINISH: NONE
 - PRODUCT SPECIFICATION: PS-02-06
 - PACKAGING SPECIFICATION: PK-1625-003
 - HOUSINGS OF USE WITH MOLEX .062 DIAMETER TERMINALS.
- △ SOME PARTS MAY HAVE THIS CORNER CHAMFERED.
- △ ETCHED CIRCUIT I.D. NUMBERS ON HOUSING MAY OR MAY NOT BE PRESENT.
- PARTS CONFORM TO CLASS B REQUIREMENTS OF COSMETIC SPECIFICATION PS-45499-002.



DETAIL 3
STANDARD MOUNTING EAR
(SCALE 4:1)



DETAIL 4
PREBENT MOUNTING EAR
(SCALE 4:1)



SEE SHEET 1 EC NO: UCP2015-4798 DRAWN/PPER 2015/05/13 CHKD/BELL 2016/02/01 APPR/SMT 2016/07/11	QUALITY SYMBOLS ▽=0 ▽=0 ▽=0	GENERAL TOLERANCES (UNLESS SPECIFIED)		DIMENSION STYLE IN/MM		SCALE 1:1	DESIGN UNITS INCH	THIRD ANGLE PROJECTION
		4 PLACES ± ---	± ---	DRAWN BY JJS	DATE 1988/02/05	TITLE .062/(1.57) HOUSINGS PLUG & RECEPTACLE 9 CKT., .145/(3.68) CTRS molex		
		3 PLACES ± ---	± .010	CHECKED BY RW	DATE 1988/02/05			
		2 PLACES ± 0.25	± .014	APPROVED BY RAS	DATE 1988/02/05			
1 PLACE ± 0.36	± ---	MATERIAL NO.	DOCUMENT NO.					
ANGULAR ± 1/2°		DRAFT WHERE APPLICABLE MUST REMAIN WITHIN DIMENSIONS		SEE CHART		SD-1625-9*		SHEET NO. 3 OF 3
THIS DRAWING CONTAINS INFORMATION THAT IS PROPRIETARY TO MOLEX INCORPORATED AND SHOULD NOT BE USED WITHOUT WRITTEN PERMISSION								