

Excellent Integrated System Limited

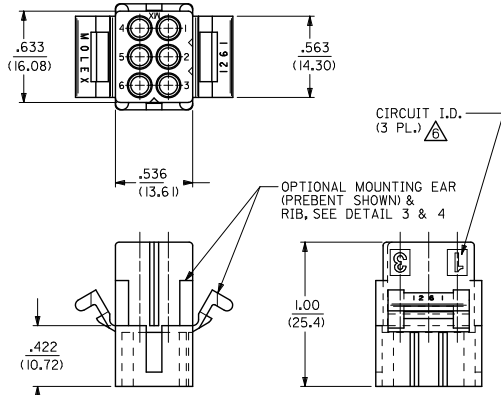
Stocking Distributor

Click to view price, real time Inventory, Delivery & Lifecycle Information:

[Molex Connector Corporation](#)
[0003092062](#)

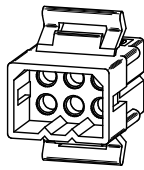
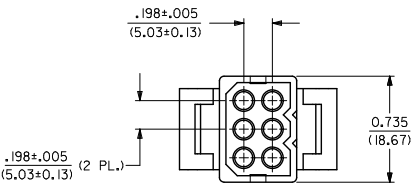
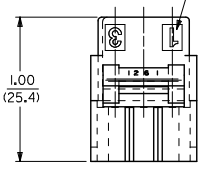
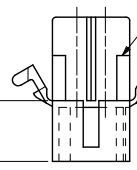
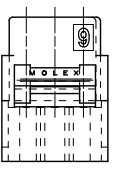
For any questions, you can email us directly:

sales@integrated-circuit.com

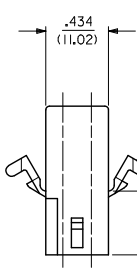
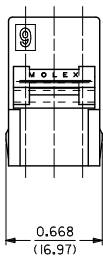
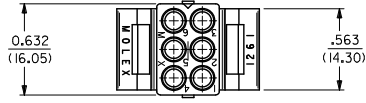


CIRCUIT I.D.
(3 PL.)

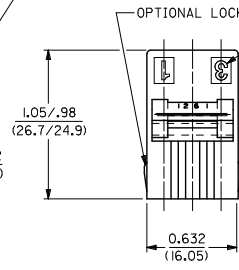
OPTIONAL MOUNTING EAR
(PREBENT SHOWN) &
RIB, SEE DETAIL 3 & 4



PLUG

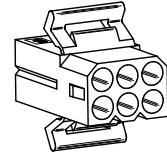


OPTIONAL MOUNTING EAR
(PREBENT SHOWN)
SEE DETAIL 3 & 4

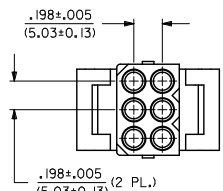


OPTIONAL LOCK RAMP

CIRCUIT I.D.
(3 PL.)



RECEPTACLE



UPDATE REV. LEVEL EC NO: UCP2011-1525 DRAWN BY: ZHANGHAG 2010/11/23 CHECKED BY: CHKD:BELL 2010/11/24 APPROVED BY: APPRO:SMITH 2010/12/03 X4	QUALITY SYMBOLS ▽=0 ▽=0	GENERAL TOLERANCES (UNLESS SPECIFIED)		DIMENSION STYLE IN/MM		SCALE 2:1	DESIGN UNITS INCH	THIRD ANGLE PROJECTION	
		4 PLACES ± --- ± --- 3 PLACES ± --- ± .007 2 PLACES ± 0.18 ± 0.10 1 PLACE ± 0.25 ± ---	mm INCH	DRAWN BY AELHAG	DATE 2010/11/23	TITLE .093/(2.36) HOUSING, PLUG AND RECEPTACLE, 6 CKT., .198/(5.03)CTRS.			
		ANGULAR ± 2 °		CHECKED BY JBELL	DATE 2010/11/24	MOLEX INCORPORATED			
		DRAFT WHERE APPLICABLE MUST REMAIN WITHIN DIMENSIONS		APPROVED BY F SMITH	DATE 2010/12/03	MATERIAL NO. SEE CHART	DOCUMENT NO. SD-1261-*	SHEET NO. 1 OF 2	

PLUG		RECEPTACLE	
PART NO.	ENG. NO.	PART NO.	ENG. NO.
03-09-2061	I261-P	03-09-1061	I261-R
23-09-2061	I261-P-100	23-09-1061	I261-R-100
03-09-2062	I261-P1	03-09-1062	I261-R1
23-09-2062	I261-P1-100	23-09-1062	I261-R1-100
03-09-7061	I261-PBK	03-09-1063	I261-R2
03-09-7062	I261-P1BK	23-09-1063	I261-R2-100
27-09-2093	I261-P1-200	03-09-1064	I261-R3
		27-09-1063	I261-R2-200
		03-09-6064	I261-R3BK
		03-09-6063	I261-R2BK
		03-09-6062	I261-R1BK
		03-09-6061	I261-RBK

LEGEND: PLUG

I261-P***-***
P = PLUG
BLANK = PLUG WITH PREBENT MOUNTING EARS
I = PLUG WITHOUT MOUNTING EARS

COLOR: BLANK=NATURAL COLOR
AM=AMBER BK=BLACK BU=BLUE
BN=BROWN GY=GRAY GN=GREEN
OR=ORANGE RD=RED YW=YELLOW

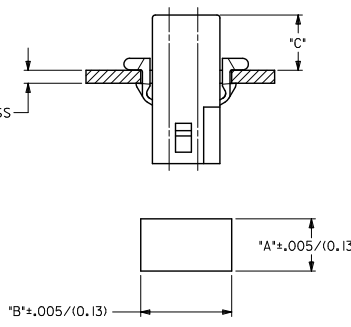
MATERIAL: BLANK = NYLON 6/6, U.L. 94V-2
100 = POLYPROPYLENE, U.L. 94V-0
200 = NYLON 6/6, U.L. 94V-0, RED

LEGEND: RECEPTACLE

I261-R***-***
R = RECEPTACLE
BLANK = WITH STD. MOUNTING EARS, WITH LOCK RAMPS
1 = WITH STD. MOUNTING EARS, WITHOUT LOCK RAMPS
2 = WITHOUT MOUNTING EARS, WITHOUT LOCK RAMPS
3 = WITHOUT MOUNTING EARS, WITH LOCK RAMPS
4 = WITH PREBENT MOUNTING EARS, WITH LOCK RAMPS
5 = WITH PREBENT MOUNTING EARS, WITHOUT LOCK RAMPS

COLOR: BLANK=NATURAL COLOR
AM=AMBER BK=BLACK BU=BLUE
BN=BROWN GY=GRAY GN=GREEN
OR=ORANGE RD=RED YW=YELLOW

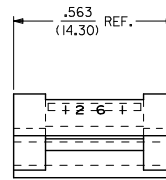
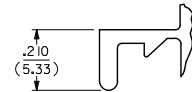
MATERIAL: BLANK = NYLON 6/6, U.L. 94V-2
100 = POLYPROPYLENE, U.L. 94V-0
200 = NYLON 6/6, U.L. 94V-0, RED



HOUSING	DIM. *A*	DIM. *B*	DIM. *C* (STD. EAR)	DIM. *C* (PREBENT)
PLUG	.750/(19.05)	.695/(17.65)	.39/(9.9)	.40/(10.1)
RECEPTACLE	.718/(18.24)	.600/(15.24)	.40/(10.1)	.41/(10.3)

NOTES:

- MATERIAL: SEE LEGEND
- FINISH: NONE
- PRODUCT SPECIFICATION: PS-43660-9999
- PACKAGING INFORMATION: PK-1261-001
- HOUSINGS FOR USE WITH MOLEX .093/(2.36) PIN AND SOCKET TERMINALS.
- CIRCUIT I.D. NUMBERS ON SIDE OF HOUSING APPEAR ON PARTS FROM TOOLS BUILT AFTER 9/3/91.
- WHERE DENOTED IN CHART, TOOLS ARE BUILT WITH PREBENT MOUNTING EARS PER DETAIL 4 AND SUPERSEDE ALL TOOLS PREVIOUSLY BUILT WITH THE STANDARD MOUNTING EAR.
- TEXT AND CIRCUIT IDENTIFIERS ARE SHOWN IN APPROXIMATE LOCATION BUT MAY VARY TO ACCOMMODATE TOOLING.



DEL. UV MAT'L & P/N EC NO: UCP201H-1525 DRAWN: AELHAG 2010/11/23 CHKD: J.BELL 2010/11/24 APPR: F.SMITH 2010/12/03	QUALITY SYMBOLS ▽=0 ▽=0	GENERAL TOLERANCES (UNLESS SPECIFIED)		DIMENSION STYLE IN/MM		SCALE 4:1	DESIGN UNITS INCH	THIRD ANGLE PROJECTION		
		4 PLACES ± --- ± ---	3 PLACES ± --- ± .007	2 PLACES ± 0.18 ± .010	1 PLACE ± 0.25 ± ---	DRAWN BY AELHAG DATE 2010/11/23	CHECKED BY J.BELL DATE 2010/11/24	TITLE .093/(2.36) HOUSING, PLUG AND RECEPTACLE, 6 CKT., 198/(5.03) CTRS.		
		ANGULAR ± 2 °		MATERIAL NO. SEE CHART		APPROVED BY F.SMITH DATE 2010/12/03		MOLEX INCORPORATED		
		DRAFT WHERE APPLICABLE MUST REMAIN WITHIN DIMENSIONS		SIZE C		DOCUMENT NO. SD-1261-*		SHEET NO. 2 OF 2		