

Excellent Integrated System Limited

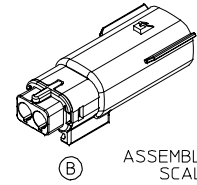
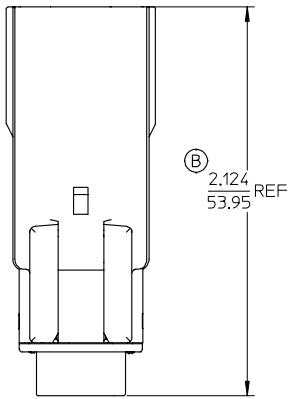
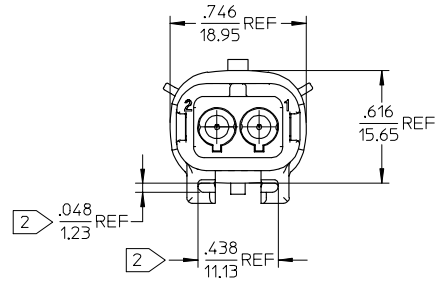
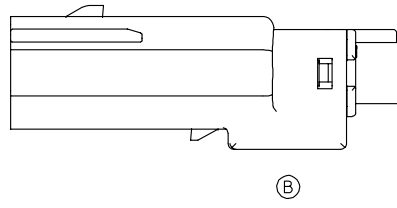
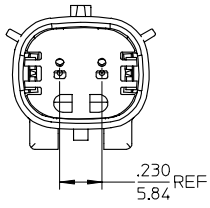
Stocking Distributor

Click to view price, real time Inventory, Delivery & Lifecycle Information:

[Molex Connector Corporation](#)
[19419-0008](#)

For any questions, you can email us directly:
sales@integrated-circuit.com

10 9 8 7 6 5 4 3 2 19419



ASSEMBLED VIEW
SCALE 1:1

194190007	2	16-14
194190008	2	22-18
MATERIAL NUMBER	CIRCUIT SIZE	UL WIRE AWG

NOTES:

1. ASSEMBLY BULK PACKAGED PER PK-19419-001.
2. MOUNTING SLOT DIMENSIONS.
3. USE CONNECTOR WITH MALE CRIMP TERMINAL: SERIES 19417.

EC NO: ETC2004-0202 DRAWN: DMYRIEK 2004/06/03 CHKD: JPAWLIC 2004/06/03 APPR: JPAWLIC 2004/06/03	QUALITY SYMBOLS -0 -0	GENERAL TOLERANCES (UNLESS SPECIFIED)		SCALE 2:1	DESIGN UNITS INCH	THIRD ANGLE PROJECTION	REVISE ON CAD ONLY
DESCRIPTION REV	4 PLACES	± ---	± ---	DIMENSION STYLE IN/MM	DRAWN BY B.RUPERT	DATE 12/05/02	TITLE 2 WAY PLUG ASSEMBLY
	3 PLACES	± ---	± .005				
	2 PLACES	± 0.13	± .01	CHECKED BY J.PAWLIC	DATE 12/06/02	MATERIAL NO. SEE CHART	DOCUMENT NO. SD-19419-002
	1 PLACE	± 0.25	± ---	APPROVED BY R.DERROSS	DATE 12/06/02	SHEET NO. 1 OF 1	
	ANGULAR ±1/2°			THIS DRAWING CONTAINS INFORMATION THAT IS PROPRIETARY TO MOLEX INCORPORATED AND SHOULD NOT BE USED WITHOUT WRITTEN PERMISSION			
	DRAFT WHERE APPLICABLE		MUST REMAIN WITHIN DIMENSIONS				

8 7 6 5 4 3 2 1