

## Excellent Integrated System Limited

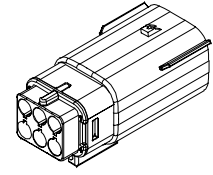
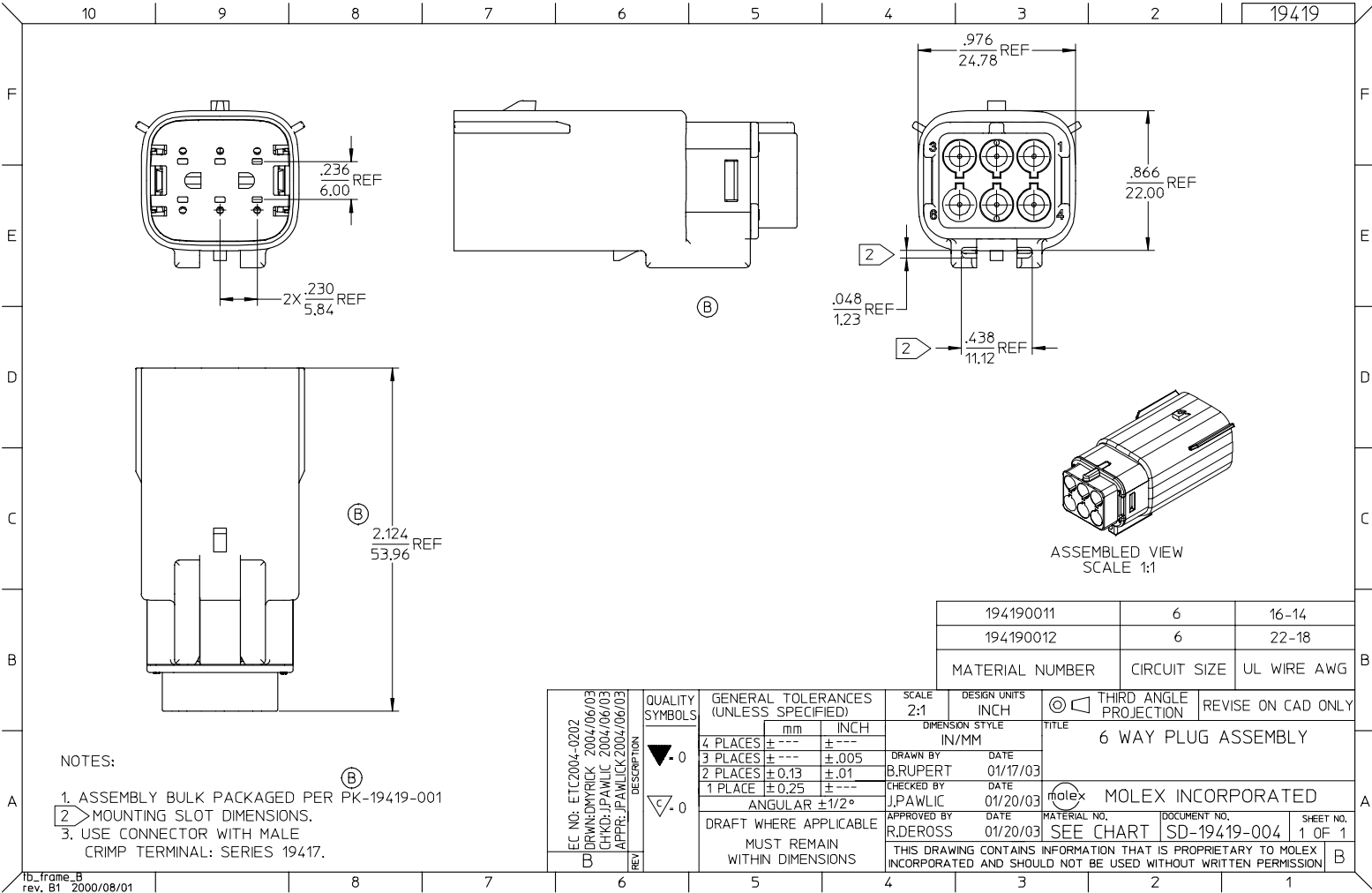
Stocking Distributor

Click to view price, real time Inventory, Delivery & Lifecycle Information:

[Molex Connector Corporation](#)  
[19419-0011](#)

For any questions, you can email us directly:

[sales@integrated-circuit.com](mailto:sales@integrated-circuit.com)



194190011	6	16-14
194190012	6	22-18
MATERIAL NUMBER	CIRCUIT SIZE	UL WIRE AWG

- NOTES:
- ASSEMBLY BULK PACKAGED PER PK-19419-001
  - MOUNTING SLOT DIMENSIONS.
  - USE CONNECTOR WITH MALE CRIMP TERMINAL: SERIES 19417.

EC NO: ETC2004-0202 DRAWN: DMYRIEK 2004/06/03 CHKD: JPAWLICK 2004/06/03 APPR: JPAWLICK 2004/06/03	QUALITY SYMBOLS -0 -0	GENERAL TOLERANCES (UNLESS SPECIFIED)		SCALE 2:1	DESIGN UNITS INCH	THIRD ANGLE PROJECTION	REVISE ON CAD ONLY
		4 PLACES ± --- ± ---	3 PLACES ± --- ± .005	2 PLACES ± 0.13 ± .01	1 PLACE ± 0.25 ± ---	ANGULAR ± 1/2°	DRAFT WHERE APPLICABLE MUST REMAIN WITHIN DIMENSIONS
REV B				APPROVED BY R.DERROSS	DATE 01/20/03	MATERIAL NO. SEE CHART	DOCUMENT NO. SD-19419-004
						MOLEX INCORPORATED	SHEET NO. 1 OF 1